

# **BASIC FISHERIES STATISTICS**

*Jan - Dec 2009*

ECONOMIC RESEARCH AND STATISTICS SERVICES  
MINISTRY OF FISHERIES & AGRICULTURE  
MALÉ

## *CONTENTS*

<b>Table 1: Number of Fishermen</b>	<b>3</b>
<b>Table 2: Reported Number of Fishing Vessels</b>	<b>4</b>
<b>Table 3: Average Number of Vessels Engaged Per Month in Pole and Line Fishing</b>	<b>5</b>
<b>Table 4: Number of Fishing Trips by Vessel Type</b>	<b>6</b>
<b>Table 5: Fish Catch by Month</b>	<b>7</b>
<b>Pie Chart: Fish Catch by Species 2009</b>	<b>8</b>
<b>Table 6: Fish Catch by Atoll and by Month</b>	<b>9</b>
<b>Table 7 : Fish Catch by Atoll and by Species</b>	<b>10</b>
<b>Table 8 : Fish Catch by Vessel Type and by Species</b>	<b>11</b>
<b>Table 9 : Fish Catch by Fishing Method and by Species</b>	<b>12</b>
<b>Table 10 : Fish Catch by Vessel Type</b>	<b>13</b>
<b>Table 11: Fish Catch by Month (2005 - 2009)</b>	<b>14</b>
<b>Table 12: Fish Catch by Species</b>	<b>15</b>
<b>Table 13 : Average Weight of Fish</b>	<b>16</b>
<b>Table 14: Exports of Marine Products</b>	<b>17</b>
<b>Table 15: Exports by Country</b>	<b>18</b>
<b>Table 16: Fish Catch And Utilization</b>	<b>19</b>
<b>Table 17: Monthly Fresh Tuna Purchased</b>	<b>20</b>
<b>Pie Chart: Fresh Fish Purchased by Zones, 2009</b>	<b>21</b>
<b>Table 18: Fresh Fish Purchased by Atolls</b>	<b>22</b>
<b>Table 19: Monthly Fresh Tuna Purchased (2004 - 2009)</b>	<b>23</b>
<b>Table 20: Lobster Catch</b>	<b>24</b>
<b>Table 21 : Monthly Sea Cucumber Catch</b>	<b>25</b>



2009 : 1 : 2009

Table 1: Number of Fishermen, 2009

Region	Fishermen	
Republic	14423	
Malé	398	
North Thiladhunmathi ( HA )	873	(a)
South Thiladhunmathi ( HD )	526	(b)
North Miladhunmadulu ( SH )	1003	(c)
South Miladhunmadulu ( NO )	315	(d)
North Maalhosmadulu ( RA )	943	(e)
South Maalhosmadulu ( BA )	938	(f)
Faadhippolhu ( LH )	294	(g)
Malé Atoll ( KA )	864	(h)
North Ari Atoll ( AA )	644	(i)
South Ari Atoll ( AD )	466	(j)
Felidhu Atoll ( VA )	126	(k)
Mulaku Atoll ( ME )	497	(l)
North Nilandhe ( FA )	610	(m)
South Nilandhe ( DH )	700	(n)
Kolhumadulu ( TH )	1019	(o)
Hadhhdhunmathi ( LA )	1286	(p)
North Huvadhu ( GA )	1112	(q)
South Huvadhu ( GD )	1270	(r)
Fuvahmulah ( GN )	101	(s)
Addu ( SE )	438	(t)

Source: Island Office

Compiled by: Economic Research & Statistics Section,  
Ministry of Fisheries & Agriculture

\* Census figures (2006)

ދިވެހިރާއްޖޭގެ ސަރުކާރުގެ ގެޒެޓް : 2009 : 1 : 2009  
 ޖިއާރިޔާކުރި ދިވެހިރާއްޖޭގެ ސަރުކާރުގެ ގެޒެޓް : 2009 : 1 : 2009  
 ޖިއާރިޔާކުރި ދިވެހިރާއްޖޭގެ ސަރުކާރުގެ ގެޒެޓް : 2009 : 1 : 2009  
 \* 2006 ވަނަ އަހަރުގެ ސަބަބުން ލިބިވަޅުވާ ސަންޝަން ޖިއާރިޔާކުރި ފިޔަވަޅުތަކެވެ.

2009 : 2 : 2009 2009 2009 2009 2009 2009

Table 2: Reported Number of Fishing Vessels, 2009

Region	Mechanised Masdhoani	Sailing Masdhoani	Mechanised Vadhu	Sailing Vadhu	Mechanised Rowboat	Row Boat	Sub-region
Republic	1304	25	366	573	162	617	
Malé	117	1	6	1	0	1	
North Thiladhunmathi ( HA )	41	0	24	11	1	16	(a)
South Thiladhunmathi ( HD )	39	0	9	57	2	3	(b)
North Miladhunmadulu ( SH )	87	2	22	61	4	31	(c)
South Miladhunmadulu ( NO )	49	1	16	69	0	70	(d)
North Maalhosmadulu ( RA )	112	2	18	51	2	31	(e)
South Maalhosmadulu ( BA )	77	0	30	22	5	37	(f)
Faadhippolhu ( LH )	28	0	7	7	0	7	(g)
Malé Atoll ( KA )	61	1	31	18	9	10	(h)
North Ari Atoll ( AA )	67	4	16	8	17	35	(i)
South Ari Atoll ( AD )	85	0	31	36	4	40	(j)
Felidhu Atoll ( VA )	13	0	5	0	8	10	(k)
Mulaku Atoll ( ME )	50	0	24	16	18	42	(l)
North Nilandhe ( FA )	91	4	16	9	6	57	(m)
South Nilandhe ( DH )	64	6	10	26	6	74	(n)
Kolhumadulu ( TH )	113	5	49	85	16	58	(o)
Hadhdhunmathi ( LA )	49	0	11	16	11	46	(p)
North Huvadhu ( GA )	49	0	10	29	1	16	(q)
South Huvadhu ( GD )	36	0	23	51	24	15	(r)
Fuvahmulah ( GN )	33	0	0	0	26	0	(s)
Addu ( SE )	45	0	7	0	2	16	(t)

Source: Island Office

Compiled by: Economic Research & Statistics Section,  
Ministry of Fisheries & Agriculture

2009 : 2 : 2009 2009 2009 2009 2009 2009  
2009 2009 2009 2009 2009 2009  
2009 2009 2009 2009 2009 2009



2009 : 4 : 2009

Table 4: Number of Fishing Trips by Vessel Type, 2009

Region	Mechanised Masdhoani	Sailing Masdhoani	Mechanised Vadhu	Sailing Vadhu	Row Boat	Miscellaneous	EEZ Vessels	
REPUBLIC	180537	5671	6688	1972	811	188	2959	
EEZ *	0	0	0	0	0	0	2959	
Malé	17571	122	653	57	58	0	0	
North Thiladhunmathi ( HA )	8733	677	0	797	545	0	0	(a)
South Thiladhunmathi ( HD )	8019	182	589	90	0	0	0	(b)
North Miladhunmadulu ( SH )	13891	579	1434	431	208	0	0	(c)
South Miladhunmadulu ( NO )	3120	1	0	24	0	0	0	(d)
North Maalhosmadulu ( RA )	21281	1110	683	136	0	188	0	(e)
South Maalhosmadulu ( BA )	10429	263	747	0	0	0	0	(f)
Faadhippolhu ( LH )	4052	185	0	0	0	0	0	(g)
Malé Atoll ( KA )	14325	0	0	0	0	0	0	(h)
North Ari Atoll ( AA )	6474	0	0	0	0	0	0	(i)
South Ari Atoll ( AD )	11861	0	679	2	0	0	0	(j)
Felidhu Atoll ( VA )	2462	0	144	0	0	0	0	(k)
Mulaku Atoll ( ME )	4187	49	189	0	0	0	0	(l)
North Nilandhe ( FA )	8868	0	5	0	0	0	0	(m)
South Nilandhe ( DH )	5712	0	389	0	0	0	0	(n)
Kolhumadulu ( TH )	10761	550	253	227	0	0	0	(o)
Hadhdhunmathi ( LA )	10173	490	0	0	0	0	0	(p)
North Huvadhu ( GA )	5987	595	0	0	0	0	0	(q)
South Huvadhu ( GD )	3538	574	98	0	0	0	0	(r)
Fuvahmulah ( GN )	5558	183	0	208	0	0	0	(s)
Addu ( SE )	3535	111	825	0	0	0	0	(t)

Source: Island Office

Compiled by: Economic Research & Statistics Section,

Ministry of Fisheries, Agriculture and Marine Resources

\* EEZ (Exclusive Economic Zone), No of fishing Days

Source: Island Office  
 Compiled by: Economic Research & Statistics Section,  
 Ministry of Fisheries, Agriculture and Marine Resources  
 \* EEZ (Exclusive Economic Zone), No of fishing Days

2009 : 5 : 2009

Table 5 : Fish Catch by Month , 2009

(Metric Tons)  
In metric tons (MT)

Month	Type of fish						Total catch	Metric Tons
	Skipjack tuna	Yellow-fin	Dogtooth tuna	Little tuna	Frigate tuna	Other fish		
<b>TOTAL</b>	<b>66,188.62</b>	<b>20,733.01</b>	<b>632.83</b>	<b>3,042.13</b>	<b>5,201.20</b>	<b>20,938.07</b>	<b>116,735.86</b>	<b>116,735.86</b>
EEZ*	1.60	1,095.05	-	-	0.09	241.15	1,337.89	1,337.89
January	5,884.70	1,803.60	52.16	197.95	373.69	1,826.73	10,138.82	10,138.82
February	4,194.60	1,813.54	49.83	196.18	288.40	2,006.41	8,548.95	8,548.95
March	5,234.22	1,647.54	61.15	191.83	261.24	1,525.33	8,921.29	8,921.29
April	5,542.05	1,866.25	31.57	310.29	327.55	1,956.88	10,034.58	10,034.58
May	5,359.15	1,396.13	42.90	258.12	444.60	1,507.47	9,008.38	9,008.38
June	4,319.98	1,412.43	58.16	374.65	948.08	1,549.57	8,662.86	8,662.86
July	5,588.97	1,629.87	80.06	284.17	685.93	1,434.50	9,703.51	9,703.51
August	5,307.71	1,310.62	40.31	309.60	633.56	1,471.08	9,072.88	9,072.88
September	4,903.28	1,369.37	58.88	232.29	328.15	1,851.86	8,743.81	8,743.81
October	7,717.61	2,403.66	47.20	186.16	295.11	1,773.99	12,423.73	12,423.73
November	5,730.89	1,500.58	60.90	223.04	324.45	2,419.43	10,259.29	10,259.29
December	6,403.90	1,484.38	49.71	277.84	290.35	1,373.69	9,879.87	9,879.87

Source: Island Office & Companies

Compiled by: Economic Research & Statistics Section,  
Ministry of Fisheries & Agriculture

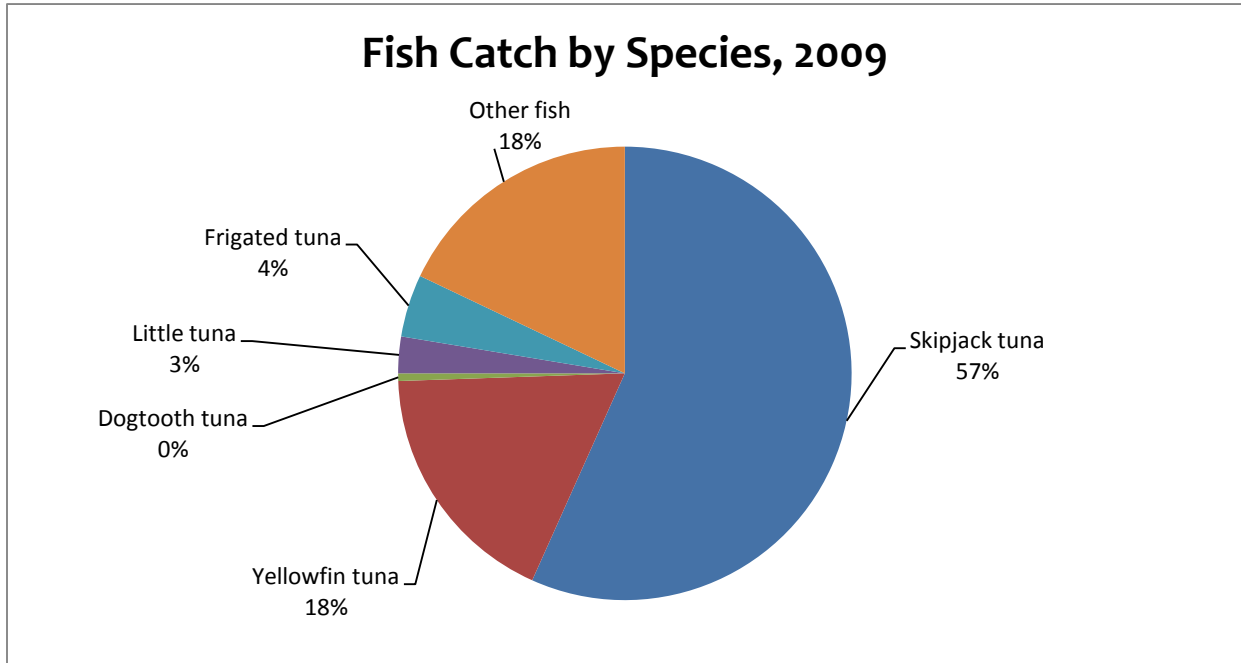
\* EEZ (Exclusive Economic Zone)

2009 : 5 : 2009  
Metric Tons  
116,735.86  
1,337.89  
10,138.82  
8,548.95  
8,921.29  
10,034.58  
9,008.38  
8,662.86  
9,703.51  
9,072.88  
8,743.81  
12,423.73  
10,259.29  
9,879.87



2009 අප්‍රේල් 2009

Fish catch by species, 2009







2009 : 8 : 2009 : 8 : 2009

Table 8 : Fish Catch by Vessel Type and by Species, 2009

(In metric tons)

In metric tons (MT)

Vessel	Type of fish						Total catch	Total catch
	Skipjack tuna	Yellow-fin	Dogtooth tuna	Little tuna	Frigate tuna	Other fish		
<b>REPUBLIC</b>	<b>66,188.62</b>	<b>20,733.01</b>	<b>632.83</b>	<b>3,042.13</b>	<b>5,201.20</b>	<b>20,938.07</b>	<b>116,735.86</b>	
EEZ *	1.60	1,095.05	-	-	0.09	241.15	1,337.89	
Mechanised Masdhoani	59,828.95	18,860.53	616.76	2,880.29	4,878.75	19,707.22	106,772.49	
Sailing Masdhoani	5,966.02	657.34	8.02	47.46	181.59	271.94	7,132.37	
Mechanised Vadhu dhoani	329.03	102.96	7.64	96.22	123.45	486.84	1,146.14	
Sailing Vadhu dhoani	34.71	15.98	0.40	14.38	11.02	54.17	130.68	
Row Boat	0.00	0.01	-	3.78	0.57	46.66	51.02	
Miscellaneous	28.32	1.14	0.00	-	5.73	130.09	165.27	

Source: Island Office & Companies

Compiled by: Economic Research & Statistics Section,

Ministry of Fisheries & Agriculture

\* EEZ (Exclusive Economic Zone)

Source: Island Office & Companies  
 Compiled by: Economic Research & Statistics Section,  
 Ministry of Fisheries & Agriculture  
 \* EEZ (Exclusive Economic Zone)





2005 - 2009 ජූනි 11 : මාසික මසු ප්‍රදානයේ වෙනස් වීම්, 2005 - 2009

Table 11 : FISH CATCH BY MONTH, 2005 - 2009

(මෙට්‍රික් ටන්)

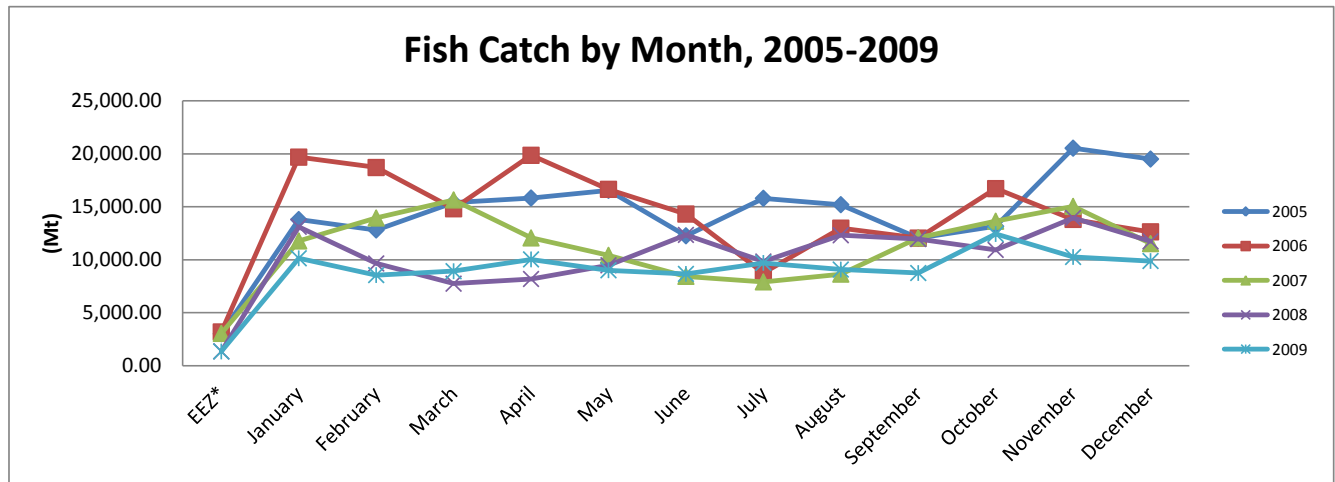
In metric tons (MT)

Month	2005	2006	2007	2008	2009	මාසය
<b>Total</b>	<b>185,923.18</b>	<b>184,158.22</b>	<b>144,168.55</b>	<b>132,574.41</b>	<b>116,735.86</b>	<b>මුළු</b>
EEZ*	3,011.28	3,177.03	3,047.84	1,349.83	1,337.89	* වැරදි
January	13,795.92	19,690.29	11,778.79	13,113.15	10,138.82	ජනවාරි
February	12,811.79	18,710.17	13,943.64	9,647.94	8,548.95	පෙබරවාරි
March	15,402.99	14,816.93	15,652.42	7,740.12	8,921.29	මාර්ච්
April	15,830.49	19,863.58	12,062.43	8,181.88	10,034.58	අප්‍රේල්
May	16,557.40	16,649.07	10,419.72	9,476.47	9,008.38	මැයි
June	12,262.25	14,315.41	8,433.31	12,345.21	8,662.86	ජූනි
July	15,803.38	8,751.19	7,911.77	9,832.56	9,703.51	ජූලි
August	15,201.13	12,979.65	8,643.20	12,316.51	9,072.88	අගෝස්තු
September	12,043.68	12,044.41	12,069.02	11,953.45	8,743.81	සැප්තැම්බර්
October	13,154.36	16,715.12	13,642.21	10,929.08	12,423.73	ඔක්තෝබර්
November	20,537.63	13,810.58	15,039.03	13,951.23	10,259.29	නොවැම්බර්
December	19,510.87	12,634.79	11,525.16	11,736.99	9,879.87	දෙසැම්බර්

Source: Island Office & Companies  
 Compiled by: Economic Research & Statistics Section,  
 Ministry of Fisheries & Agriculture

මූලාශ්‍රය: දූෂිතයාගේ කාර්යාලය සහ සමාගම්  
 සකස් කළේ: ජනප්‍රිය පර්යේෂණ සහ සංඛ්‍යා විද්‍යා කොටු,  
 මාසික මසු ප්‍රදානයේ වෙනස් වීම්, 2005 - 2009  
 \* වැරදි (විදේශීය ජනප්‍රිය ක්ෂේත්‍රය)

\* EEZ (Exclusive Economic Zone)







ދިވެހިސަރުކާރުގެ ގެޒެޓް: 13: ވަނަ ބައިގައި ބަޔާންކުރި ގަނޑު ގަނޑުގެ ދެމެހާރުގެ ގަނޑު

Table 13 : Average Weight of Fish

Species	Weight (KG)	މަސްގެ ނަންމު
Large Skipjack	5.70	މަސް
Small Skipjack	2.10	މަސް ދަނޑު
Large yellowfin tuna	20.00	މަސް ދަނޑު ދަނޑު
Yellowfin Tuna	2.60	މަސް ދަނޑު
Little Tuna	1.10	މަސް ދަނޑު
Frigate Tuna	0.60	މަސް ދަނޑު
Dogtooth Tuna	6.00	މަސް ދަނޑު
Other Fish Group 01 (Shark, Wahoo, etc)	20.00	މަސް ދަނޑު 1 (މަސް ދަނޑު، ވަހޯ، ފަދަ)
Other Fish Group 02 (Jack, Rainbow Runner, etc)	1.10	މަސް ދަނޑު 2 (މަސް ދަނޑު، ރަންނަ ރަންނަ، ފަދަ)
Other Fish Group 03 (Horse Mackerel, Scad, etc)	0.15	މަސް ދަނޑު 3 (މަސް ދަނޑު، ސަކްޑް، ފަދަ)
<b>Average Weight Of Fresh Fish Required To Produce</b>		
<b>1 Kg Of Fish Product</b>		
Fish Product	Weight (KG)	މަސްގެ ނަންމު
Maldive Fish	5.00	މަސް ދަނޑު
Salted Dried Fish	3.00	މަސް ދަނޑު ދަނޑު
Canned Fish	3.00	މަސް ދަނޑު
Steamed / Cooked Fish	4.00	މަސް ދަނޑު ދަނޑު



2009 අපනයන අගයන් පිළිබඳව විස්තරය: 15 වන වගුව

Table 15: Exports by Country, 2009

Country	Total Value (Rf)	රට
<b>TOTAL</b>	<b>958,408,017.57</b>	<b>මුළු</b>
BELGIUM	19,426.85	බෙල්ජියම්
CANADA	41,189.51	කැනඩා
CZECH REPUBLIC	27,537.16	චෙක් ජනරජය
DENMARK	4,735,092.35	දේන්මාර්ක
FRANCE	110,347,489.64	ප්‍රංශය
GERMANY	33,888,798.38	ජර්මනිය
GREECE	66849.16	ග්‍රීසිය
HONG KONG	10,723,593.33	හොං කොං
INDIA	12,310.02	ඉන්දියාව
IRAN	57414481.28	ඉරාන්
ITALY	125,663,859.26	ඊතාලියාව
JAPAN	38,991,252.99	ජපානය
LEBANON	1,285.00	ලිබානය
MALAYSIA	787,610.22	මලේසියාව
MALTA	491,618.37	මල්ටාව
MAURITIUS	21910853.51	මොරිෂියස්
NETHERLANDS	22,690,009.78	නෙදර්ලන්තය
SINGAPORE	848728.6	සිංගප්පූරුව
SPAIN	20,697,921.65	ස්පේන්
SRI LANKA	167,070,773.07	ශ්‍රී ලංකාව
SWEDEN	138,575.92	ස්වීඩන්
SWITZERLAND	4,981,177.77	ස්විට්සර්ලන්තය
TAIWAN	25,005,762.06	තායිවානය
THAILAND	203,565,131.47	තායිලන්තය
TUNISIA	2,537,206.69	ටියුනීසියාව
U.A.E	55,428.98	එ.එ.ඊ.
U.K	98,090,754.78	එ.කී.
U.S.A	7603299.77	එ.ජ.ඊ.

Source: Customs

Compiled by: Economic Research & Statistics Section,  
Ministry of Fisheries & Agriculture

රට අනුව අපනයන අගයන්: මුළු

කොටු කොටු අනුව අපනයන අගයන්: මුළු  
රට අනුව අපනයන අගයන්: මුළු



2009 17 : 2009 17 : 2009 17

Table 17: Monthly Fresh Tuna Purchased , 2009

(މަސްދަތުރު)

In metric tons (MT)

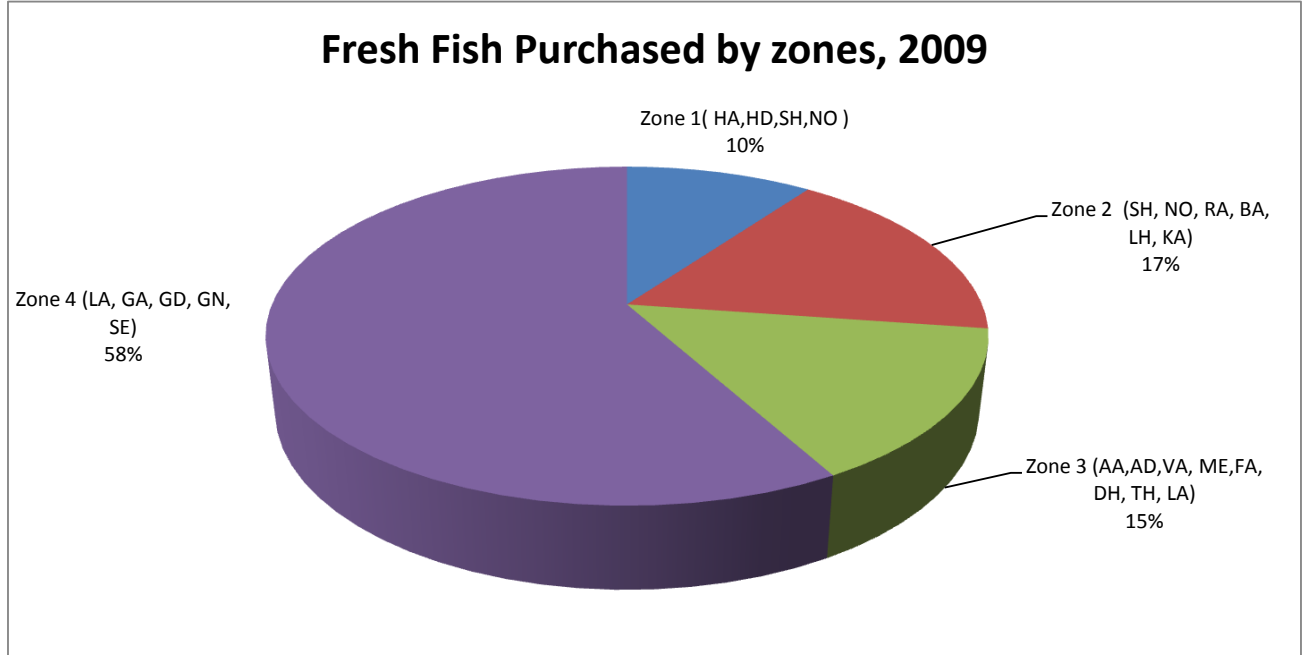
Month	Purchased	މަސް
<b>TOTAL</b>	<b>31,848.87</b>	<b>މަސް</b>
January	2,651.87	މަސް
February	1,702.09	މަސް
March	3,989.74	މަސް
April	2,981.39	މަސް
May	2,839.08	މަސް
June	2,510.06	މަސް
July	1,979.45	މަސް
August	2,287.77	މަސް
September	2,074.77	މަސް
October	3,665.06	މަސް
November	2,381.25	މަސް
December	2,786.34	މަސް

Source: Maldives Industrial Fisheries Company Ltd  
 Island Enterprises Pvt.Ltd. & Jausa Fisheries Link Maldives Pvt.Ltd.  
 & Horizon Fisheries Pvt.Ltd  
 Compiled by: Economic Research & Statistics Section,  
 Ministry of Fisheries & Agriculture

މަސްދަތުރު 2009 17 : 2009 17 : 2009 17  
 2009 17 : 2009 17 : 2009 17  
 2009 17 : 2009 17 : 2009 17  
 2009 17 : 2009 17 : 2009 17

فیش تازه خریداری شده در سال ۲۰۰۹

## Fresh Fish Purchased by Zones, 2009



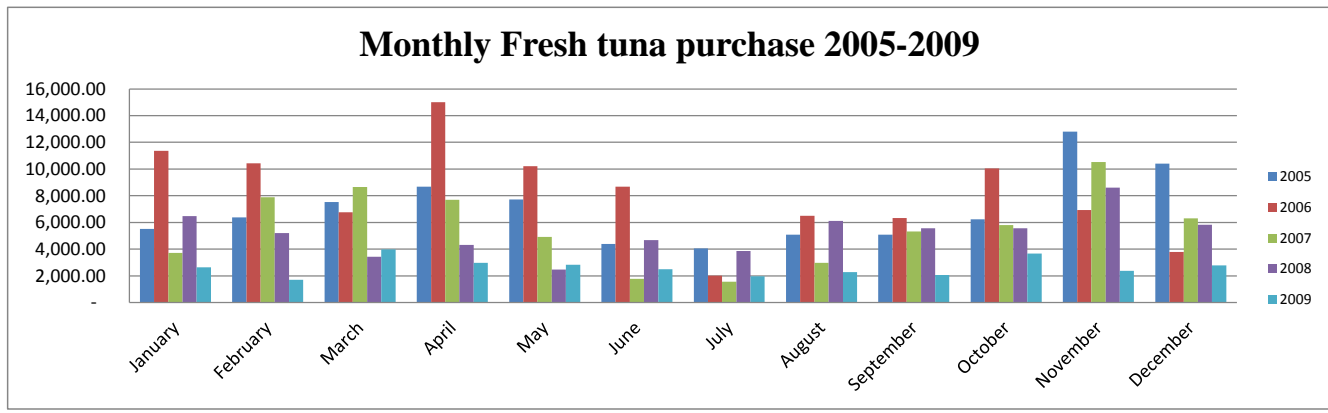


**2009 - 2005 ނަންނަނުގެ ފުނު ފަނޑުކަން 19 ވަނަ ބަލަވާ**  
**Table 19: Monthly Fresh Tuna Purchased , 2005 - 2009**  
 (މަޖިލީތަކުގެ ގަދަ)  
 In metric tons (MT)

Month	2005	2006	2007	2008	2009	މަޖިލީ
<b>TOTAL</b>	<b>83,908.42</b>	<b>98,014.89</b>	<b>67,232.09</b>	<b>62,101.30</b>	<b>31,848.87</b>	<b>މަޖިލީ</b>
January	5,515.47	11,352.40	3,729.87	6,474.54	2,651.87	ޖެނުއަރީ
February	6,387.73	10,419.37	7,892.51	5,195.82	1,702.09	ފެބްރުއަރީ
March	7,525.68	6,755.16	8,660.46	3,424.23	3,989.74	މާރޗް
April	8,674.16	15,009.09	7,703.47	4,309.74	2,981.39	އޭޕްރިލް
May	7,732.06	10,214.66	4,915.78	2,466.30	2,839.08	މޭ
June	4,384.36	8,672.65	1,785.04	4,678.35	2,510.06	ޖޫން
July	4,064.08	2,012.95	1,567.93	3,852.82	1,979.45	ޖުލައި
August	5,087.24	6,495.54	2,989.53	6,127.73	2,287.77	އޮގަސްޓް
September	5,083.55	6,323.88	5,329.67	5,565.13	2,074.77	ސެޕްޓެމްބަރް
October	6,245.14	10,044.23	5,815.88	5,556.60	3,665.06	އޮކްޓޯބަރް
November	12,796.19	6,929.16	10,526.94	8,609.91	2,381.25	ނޮވެމްބަރް
December	10,412.75	3,785.79	6,315.00	5,840.15	2,786.34	ޑިސެމްބަރް

Source: Maldives Industrial Fisheries Company Ltd  
 Island Enterprises Pvt.Ltd. & Jausa Fisheries Link Maldives Pvt.Ltd.  
 & Horizon Fisheries Pvt.Ltd  
 Compiled by: Economic Research & Statistics Section,  
 Ministry of Fisheries & Agriculture

މަޖިލީތަކުގެ ފުނު ފަނޑުކަން 19 ވަނަ ބަލަވާ: 2005-2009 ވަނަ އަހަރުގެ ފުނު ފަނޑުކަން ބަލަވާ. ފުނު ފަނޑުކަން ބަލަވާ ގޮތުގައި 2005-2009 ވަނަ އަހަރުގެ ފުނު ފަނޑުކަން ބަލަވާ. ފުނު ފަނޑުކަން ބަލަވާ ގޮތުގައި 2005-2009 ވަނަ އަހަރުގެ ފުނު ފަނޑުކަން ބަލަވާ. ފުނު ފަނޑުކަން ބަލަވާ ގޮތުގައި 2005-2009 ވަނަ އަހަރުގެ ފުނު ފަނޑުކަން ބަލަވާ.





2009 20: 2009 2009

Table 20: Lobster Catch, 2009

Region	Numbers	
	2009	2009
<b>REPUBLIC</b>	<b>21,547</b>	<b>2009</b>
Malé	-	2009
North Thiladhunmathi ( HA )	-	(a) 2009
South Thiladhunmathi ( HD )	-	(b) 2009
North Miladhunmadulu ( SH )	5,251	(c) 2009
South Miladhunmadulu ( NO )	-	(d) 2009
North Maalhosmadulu ( RA )	12,089	(e) 2009
South Maalhosmadulu ( BA )	-	(f) 2009
Faadhippolhu ( LH )	-	(g) 2009
Malé Atoll ( KA )	2,914	(h) 2009
North Ari Atoll ( AA )	-	(i) 2009
South Ari Atoll ( AD )	-	(j) 2009
Felidhu Atoll ( VA )	490	(k) 2009
Mulaku Atoll ( ME )	-	(l) 2009
North Nilandhe ( FA )	-	(m) 2009
South Nilandhe ( DH )	-	(n) 2009
Kolhumadulu ( TH )	-	(o) 2009
Hadhdhunmathi ( LA )	803	(p) 2009
North Huvadhu ( GA )	-	(q) 2009
South Huvadhu ( GD )	-	(r) 2009
Fuvahmulah (GN )	-	(s) 2009
Addu ( SE )	-	(t) 2009

Source: Island Office

Compiled by: Economic Research & Statistics Section,  
Ministry of Fisheries & Agriculture

2009 2009 2009  
2009 2009 2009  
2009 2009 2009

