

Fisheries Statistics 2006



**Economic Research and Statistics Services
Ministry of Fisheries, Agriculture and Marine Resources**

Ministry of Fisheries, Agriculture and Marine Resources

All rights reserved. No part may be produced by any process without
Prior written permission from publisher.

Publisher:

Ministry of Fisheries, Agriculture and Marine Resources
Ghaazee Building (Ground floor)

Male'

Republic of Maldives

Tel: (960) 332 2625

(960) 332 1239

Fax: (960) 332 6558

(960) 332 1168

E-mail: erss@fishagri.gov.mv

Website: <http://www.fishagri.gov.mv>

Produced by:

Economic Research and Statistics Services

Ministry of Fisheries, Agriculture and Marine Resources

Foreword

Fisheries Statistics 2006

This booklet contains the fisheries statistics of the Maldives fishing industry for the year 2006. This annual publication is intended to provide statistical information on fish species landed, catch by atolls, fishing vessels, fishermen, exports and catch and landing characteristics.

The Statistics Unit of the Ministry of Fisheries, Agriculture and Marine Resources would like to thank all staff involved in collecting and compilation of fisheries data in close coordination with Island Offices, Atoll Offices, Maldives Customs Services, Maldives Industrial Fisheries Company Ltd, Island Enterprises pvt ltd, Horizon Fisheries pvt ltd, and Funadhoo Tuna Products. We gratefully acknowledge their contributions.

Data compilation for this publication was lead by Raufiyya Abdulla with assistance from Fathimath Shareef, Shifana Wafeer, Inaya Abdul Hameedh, Mariyam Simla, Fathmath Sharumeela and Ahmed Ibrahim. Layout and design of the booklet was undertaken by Ismail Afeef. Their enduring and dedicated work is gratefully acknowledged.

We hope this booklet provides useful baseline information for the analysis and interpretation of the economics and management of the fishing industry of the Maldives. Comments and suggestions from the users of this data for further improvement and development are most welcome.

Thank You

Hassan Rasheed
Executive Director

Contents

Table 1: Number of Fishermen	1
Table 2: Reported Number of Fishing Vessels	2
Table 3: Average Number of Vessels Engaged Per Month	3
Table 4: Number of Fishing trips by vessel type	4
Table 5 : Fish Catch by Month	5
Table 5.1 : Fish Catch by Month (2002-2006)	6
Table 6 : Fish Catch by Atoll and by Month	7
Table 7 : Fish Catch by Atoll and by Species	8
Table 8 : Fish Catch by Vessel Type and by Species	9
Table 9: Fish Catch by Fishing Method and Species	10
Table 10: Fish Catch by Vessel Type	11
Table 11 : Average weight of Fish	12
Table 12: Exports of Marine Products	13
Table 13: Exports by Country	14
Table 14: Fish Production And Utilization	15
Table 15: Monthly Fresh Tuna Purchased	16
Table 16: Fresh Fish Purchased	17
Table 17a: Average Price of Fresh Fish	18
Table 17b: Average Fuel Prices for Fishermen	19
Table 18: Lobster Catch	20
Table 19: Monthly Sea Cucumber Catch	21
Graphical Presentation	22

2006 : 1 : 2006

Table 1: Number of Fishermen, 2006

Region	Fishermen	
Republic	13980	
Malé *	398	
North Thiladhunmathi (HA)	776	(a)
South Thiladhunmathi (HD)	540	(b)
North Miladhunmadulu (SH)	989	(c)
South Miladhunmadulu (NO)	349	(d)
North Maalhosmadulu (RA)	837	(e)
South Maalhosmadulu (BA)	1010	(f)
Faadhippolhu (LH)	361	(g)
Malé Atoll (KA)	833	(h)
North Ari Atoll (AA)	591	(i)
South Ari Atoll (AD)	326	(j)
Felidhu Atoll (VA)	122	(k)
Mulaku Atoll (ME)	401	(l)
North Nilandhe (FA)	591	(m)
South Nilandhe (DH)	472	(n)
Kolhumadulu (TH)	1004	(o)
Hadhdhunmathi (LA)	1359	(p)
North Huvadhu (GA)	1097	(q)
South Huvadhu (GD)	1324	(r)
Fuvahmulah (GN)	95	(s)
Addu (SE)	505	(t)

* Census 2006

2006 : 4 : 2006

Table 4: Number of Fishing Trips by Vessel Type, 2006

Region	Mechanised Masdhoani	Sailing Masdhoani	Mechanised Vadhhu	Sailing Vadhhu	Row Boat	Miscellaneous	EEZ Vessels
	175008	553	6830	1540	1930	89	8060
REPUBLIC							
EEZ *	0	0	0	0	0	0	8060
Malé	12543	0	114	2	959	89	
North Thiladhunmathi (HA)	7872	226	0	818	542	0	
South Thiladhunmathi (HD)	8083	0	338	299	0	0	
North Miladhunmadulu (SH)	14751	0	1499	137	18	0	
South Miladhunmadulu (NO)	4403	52	61	110	0	0	
North Maalhosmadulu (RA)	19049	0	1067	23	0	0	
South Maalhosmadulu (BA)	11856	0	812	0	0	0	
Faadhippolhu (LH)	3784	0	0	0	0	0	
Malé Atoll (KA)	13851	275	817	0	0	0	
North Ari Atoll (AA)	7348	0	0	0	0	0	
South Ari Atoll (AD)	9062	0	248	0	0	0	
Felidhu Atoll (VA)	2065	0	150	21	1	0	
Mulaku Atoll (ME)	5692	0	490	38	0	0	
North Nilandhe (FA)	8469	0	28	0	45	0	
South Nilandhe (DH)	4387	0	436	0	0	0	
Kolhumadulu (TH)	8871	0	255	92	0	0	
Hadhdhunmathi (LA)	10366	0	0	0	0	0	
North Huvadhhu (GA)	6981	0	0	0	0	0	
South Huvadhhu (GD)	5459	0	203	0	79	0	
Fuvahmulah (GN)	3951	0	0	0	286	0	
Addu (SE)	6165	0	312	0	0	0	

2006ء کی ماهانہ پکڑی کی تفصیلات

Table 5 : Fish Catch by Month , 2006

(میتریکٹن میں)

In metricktons (MT)

Month	Type of fish							Total catch
	Skipjack tuna	Yellow-fin	Dogtooth tuna	Little tuna	Frigate tuna	Other fish	Total	
TOTAL	138,458.35	22,953.54	511.55	1,673.84	3,532.19	17,028.74	184,158.22	
EEZ*	0.16	3,083.44				93.43	3,177.03	
January	14,840.55	2,377.93	22.98	199.96	666.01	1,582.86	19,690.29	
February	14,501.65	2,058.87	34.55	167.87	519.60	1,427.62	18,710.17	
March	10,539.56	2,008.84	39.49	140.24	363.34	1,725.46	14,816.93	
April	16,281.28	1,455.74	33.05	110.56	209.46	1,773.49	19,863.58	
May	13,756.39	993.40	32.80	101.13	204.90	1,560.46	16,649.07	
June	11,142.16	1,089.46	42.90	149.81	370.46	1,520.62	14,315.41	
July	5,153.57	1,551.62	53.68	132.23	335.54	1,524.56	8,751.19	
August	9,323.87	1,448.97	54.78	118.11	259.30	1,774.62	12,979.65	
September	9,209.42	1,367.69	62.38	115.59	121.00	1,168.33	12,044.41	
October	13,519.52	1,827.29	49.82	152.56	165.68	1,000.23	16,715.12	
November	10,503.60	1,956.77	39.80	138.63	166.76	1,005.02	13,810.58	
December	9,686.61	1,733.51	45.32	147.14	150.15	872.05	12,634.79	

2002 - 2006 : 5.1 : مېنيسوندي ډېټا

Table 5.1 : FISH CATCH BY MONTH, 2002 - 2006
(مېټريکټون)

In metrictons (MT)

Month	2002	2003	2004	2005	2006	دوم
Total	163,387.93	155,415.06	158,164.22	185,923.18	184,158.22	مجموعه
EEZ*	3,138.81	3,164.89	2,545.54	3,011.28	3,177.03	* مېنيسوندي
January	13,132.64	11,214.41	12,466.95	13,795.92	19,690.29	جانوري
February	8,948.00	12,474.90	13,710.51	12,811.79	18,710.17	فبروري
March	11,474.09	12,096.76	15,623.27	15,402.99	14,816.93	مارچ
April	16,208.03	16,363.06	11,633.92	15,830.49	19,863.58	اپريل
May	10,610.88	12,023.83	7,982.93	16,557.40	16,649.07	مئي
June	7,085.91	11,765.92	9,373.65	12,262.25	14,315.41	جون
July	11,884.31	10,181.57	11,903.17	15,803.38	8,751.19	جولای
August	16,651.06	9,579.08	15,728.98	15,201.13	12,979.65	اگست
September	18,546.08	11,893.77	11,568.91	12,043.68	12,044.41	سپټمبر
October	15,824.90	12,803.40	16,968.89	13,154.36	16,715.12	اکتوبر
November	14,916.93	14,995.59	15,375.63	20,537.63	13,810.58	نومبر
December	14,966.31	16,857.88	13,281.87	19,510.87	12,634.79	ډسمبر

2006 Table 6 : Fish Catch by Atoll and by Month, 2006
(In metric tons (MT))

Region	Month												Total catch
	January	February	March	April	May	June	July	August	September	October	November	December	
REPUBLIC	19,850.95	18,868.16	15,415.63	20,255.48	16,885.77	14,507.94	8,978.58	13,210.86	12,276.86	16,974.49	14,020.14	12,913.36	184,158.22
EEZ*	160.66	157.99	598.71	391.90	236.70	192.53	227.39	231.21	232.45	259.37	209.56	278.57	3,177.03
Malé	1,054.91	1,040.40	1,026.26	733.78	710.38	653.59	1,022.02	970.11	911.29	1,022.43	1,266.31	1,343.48	11,754.95
North Thiladhunmathi (HA)	2,269.91	2,337.64	2,119.23	1,296.21	1,012.32	551.16	260.16	481.91	739.60	1,648.43	1,249.55	1,888.47	15,854.59
South Thiladhunmathi (HD)	895.42	1,084.08	558.85	313.08	332.72	404.29	463.51	628.92	588.19	645.85	774.29	782.00	7,471.18
North Mliadhunmadulu (SH)	1,256.28	1,528.56	885.26	613.04	282.76	259.19	458.09	576.76	785.24	1,117.25	1,268.64	1,658.89	10,689.95
South Mliadhunmadulu (NO)	444.34	483.87	296.17	32.88	64.74	73.77	76.03	83.45	79.85	116.36	165.20	152.30	2,048.98
North Maalhosmadulu (RA)	493.95	662.06	1,518.96	1,388.75	378.06	878.09	1,389.48	1,440.65	980.11	1,331.28	1,103.10	1,205.69	12,770.17
South Maalhosmadulu (BA)	235.39	264.54	240.14	151.95	73.86	135.19	297.45	355.05	261.78	280.27	153.13	139.47	2,588.21
Faadhippolhu (LH)	1,590.76	1,929.11	1,387.27	439.12	433.94	447.63	472.42	883.87	1,122.55	1,154.90	836.92	203.67	10,902.16
Malé Atoll (KA)	591.50	482.12	441.69	373.69	344.85	356.45	381.36	693.69	385.01	627.94	514.83	271.60	5,464.72
North Ari Atoll (AA)	969.62	644.21	764.66	834.03	741.10	805.03	640.69	606.96	461.43	709.75	555.58	501.30	8,234.35
South Ari Atoll (AD)	579.00	639.47	697.11	884.12	674.26	605.24	782.89	784.86	593.32	524.49	502.82	581.82	7,849.42
Felidhu Atoll (VA)	74.52	48.60	75.47	43.14	87.56	102.96	81.39	67.20	64.60	29.44	52.64	43.18	770.70
Mulaku Atoll (ME)	563.29	233.12	244.05	225.48	355.74	612.06	328.75	244.72	139.14	325.93	359.99	354.71	3,986.97
North Nilandhe (FA)	84.04	105.10	120.01	202.22	272.57	168.73	161.36	148.10	158.01	146.59	159.23	133.17	1,857.13
South Nilandhe (DH)	80.77	44.29	67.11	417.21	272.17	170.48	100.42	139.00	137.66	424.37	189.99	94.64	2,138.10
Kolhumadulu (TH)	665.24	486.34	898.48	1,215.98	1,206.28	739.87	321.41	257.35	443.44	805.59	689.96	393.11	8,123.06
Hadhunmathi (LA)	1,076.90	618.05	592.21	1,047.99	1,418.74	1,772.11	596.94	786.35	1,020.61	1,273.03	1,271.97	1,394.62	12,869.53
North Huvadhu (GA)	2,289.17	2,654.12	972.18	4,761.30	5,225.23	3,135.50	432.12	1,642.76	1,363.44	1,393.54	775.67	363.53	25,008.54
South Huvadhu (GD)	2,652.60	2,126.56	932.84	3,205.09	1,339.42	1,307.97	149.30	822.92	1,321.68	1,897.91	989.10	649.27	17,394.65
Fuwahmulah (GN)	83.74	84.82	85.76	125.70	148.24	99.47	48.55	42.17	27.43	21.65	35.13	18.40	821.06
Addu (SE)	1,738.94	1,213.11	893.23	1,558.81	1,274.15	1,036.66	286.84	1,324.86	460.03	1,238.12	896.55	461.48	12,382.77

2006 : 8 වන වර්ගයේ වාහනවලින් සිදු කළ මසුන්ගේ මුළු ප්‍රමාණය

Table 8 : Fish Catch by Vessel Type and by Species, 2006

(මිලියන මිටිකිලෝග්‍රෑම්)

Vessel	Type of fish							Total catch
	Skipjack tuna	Yellow-fin	Dogtooth tuna	Little tuna	Frigate tuna	Other fish		
REPUBLIC	138,458.35	22,953.54	511.55	1,673.84	3,532.19	17,028.74	184,158.22	මුළු ප්‍රමාණය
EEZ *	0.16	3,083.44		-	-	93.43	3,177.03	මුළු ප්‍රමාණය *
Mechanised Masdhoani	137,538.67	19,619.80	508.94	1,604.16	3,468.46	16,353.58	179,093.61	මෙහෙයුම් මාසුන්
Sailing Masdhoani	31.28	13.64	-	6.75	3.47	14.46	69.60	මෙහෙයුම් මාසුන්
Mechanised Vadhu dhoani	416.33	130.52	1.81	52.38	39.34	207.23	847.61	මෙහෙයුම් මාසුන්
Sailing Vadhu dhoani	50.71	9.47	0.31	8.22	16.65	20.95	106.32	මෙහෙයුම් මාසුන්
Row Boat	260.98	81.94	0.49	2.33	0.04	56.36	402.13	මෙහෙයුම් මාසුන්
Miscellaneous	160.22	14.73	0.00	-	4.24	282.74	461.93	මෙහෙයුම් මාසුන්

2006 : 9 : Fisheries Statistics of Sri Lanka
 Table 9 : Fish Catch by Fishing Method and by Species, 2006
 (in metric tons)

In metric tons (MT)

Fishing Method	Type of fish							Total catch
	Skipjack tuna	Yellow-fin	Dogtooth tuna	Little tuna	Frigate tuna	Other fish		
ALL METHODS	138,458.35	22,953.54	511.55	1,673.84	3,532.19	17,028.74	184,158.22	
EEZ*	0.16	3,083.44				93.43	3,177.03	
Pole and line	137,535.42	13,586.11	35.81	1,238.35	3,196.83	9,244.00	164,836.51	
Trolling	231.51	840.29	80.93	121.34	83.12	1,608.32	2,965.51	
Long line	9.09	36.02	0.17	1.21	0.04	159.43	205.96	
Hand line	617.28	5,388.83	394.64	312.84	252.05	5,746.32	12,711.96	
Fixed gill nets	59.61	17.45	-	-	-	175.85	252.90	
Miscellaneous	5.29	1.39	-	0.11	0.15	1.40	8.34	

2006 : 10 වර්ෂයේ මත්ස්‍ය ප්‍රභවයන්හි වෙනස්වීම් සහ සමස්ත මත්ස්‍ය ප්‍රභවය

Table 10: Fish Catch by Vessel Type, 2006

(In metric tons (MT))

Region	In metric tons (MT)						Total catch
	Mechanised Masdhoani	Sailing Masdhoani	Mechanised Vadhu	Sailing Vadhu	Row Boat	Miscellaneous	
EEZ*	179,093.61	69.60	847.61	106.32	402.13	461.93	3,177.03
Malé	11,444.64		72.49	1.68	51.77	184.37	3,177.03
North Thiladhunmathi (HA)	15,687.53	1.40	98.88	6.78	158.87		11,754.95
South Thiladhunmathi (HD)	7,295.00		59.23	74.73		2.58	15,854.59
North Mliadhunmadulu (SH)	10,620.90		12.07	9.20	0.15	0.48	7,471.18
South Mliadhunmadulu (NO)	2,029.29	0.36	271.58	7.26			10,689.95
North Maalhoshmadulu (RA)	12,328.43		33.66	2.27		167.88	2,048.98
South Maalhoshmadulu (BA)	2,554.56						12,770.17
Faadhippolhu (LH)	10,902.16						2,588.21
Malé Atoll (KA)	5,344.27		52.62				10,902.16
North Ari Atoll (AA)	8,232.30	67.84				2.05	5,464.72
South Ari Atoll (AD)	7,775.98		15.09			58.34	8,234.35
Felidhu Atoll (VA)	766.78		3.71	0.20			7,849.42
Muliaku Atoll (ME)	3,982.62		5.37	0.56	0.61		770.70
North Nilandhe (FA)	1,851.14		61.83				3,986.97
South Nilandhe (DH)	2,076.28		31.90				1,857.13
Kolhumadulu (TH)	8,084.31			3.64		3.20	2,138.10
Hadhunmathi (LA)	12,866.28						8,123.06
North Huvadhoo (GA)	25,006.11					3.25	12,869.53
South Huvadhoo (GD)	17,255.98		15.94		106.15	2.44	25,008.55
Fuvahmulah (GN)	736.49				84.57	16.59	17,394.65
Addu (SE)	12,252.54		109.46			20.77	821.06
REPUBLIC	179,093.61	69.60	847.61	106.32	402.13	461.93	184,156.22

ދިވެހިސަރުކާރުގެ ގެޒެޓް: 2006 ވަނަ އަދަދު 11: ގަނޑު 11

Table 11 : Average Weight of Fish

Species	Weight (KG)	މަސް
Large Skipjack	5.70	މަސް
Small Skipjack	2.10	މަސް
Large yellowfin tuna	20.00	މަސް
Yellowfin Tuna	2.60	މަސް
Little Tuna	1.10	މަސް
Frigate Tuna	0.60	މަސް
Dogtooth Tuna	6.00	މަސް
Other Fish Group 01 (Shark, Wahoo, etc)	20.00	މަސް (1 ގަނޑު) (ޖަނަވާތަކާއި ޖަނަވާތަކާ)
Other Fish Group 02 (Jack, Rainbow Runner, etc)	1.10	މަސް (2 ގަނޑު) (ޖަނަވާތަކާއި ޖަނަވާތަކާ)
Other Fish Group 03 (Horse Mackerel, Scad, etc)	0.15	މަސް (1 ގަނޑު) (ޖަނަވާތަކާއި ޖަނަވާތަކާ)
Average Weight Of Fresh Fish Required To Produce 1 Kg Of Fish Product		މަސް 1 ގަނޑު އުފައްދާނެ ފަންނަ މަސް ގެ ސަރަޙައްދުގެ ބަރުދަނުގެ ސަރަޙައްދު
Fish Product	Weight (KG)	މަސް
Maldive Fish	5.00	މަސް
Salted Dried Fish	3.00	މަސް
Canned Fish	3.00	މަސް
Steamed / Cooked Fish	4.00	މަސް

2006 : 12 مہینوں کے دوران سمندری پیداوار کی برآمدات کی تفصیلی رپورٹ

Table 12: Exports of Marine Products, 2006

PRODUCT	UNIT	Government		Private		Total		Value (R)
		Quantity	Value (R)	Quantity	Value (R)	Quantity	Value (R)	
TOTAL			861,202,872.77		848,786,565.93		1,709,989,438.70	
Canned Skipjack	Kgs	1,757,203.00	52,581,236.64			1,757,203.00	52,581,236.64	تیار شدہ (کانسرگوں)
Canned Tuna	Kgs	2,922,993.00	92,499,209.37			2,922,993.00	92,499,209.37	تیار شدہ
Canned Yellowfin Tuna	Kgs	46,940.00	1,182,943.24			46,940.00	1,182,943.24	تیار شدہ (کانسرگوں)
Crustaceans, Shells Of Molluscs	Kgs			4,860.00	10,369.95	4,860.00	10,369.95	حیوانی
Dried Reef Fish	Kgs			2,100.00	18,233.21	2,100.00	18,233.21	تیار شدہ
Dried Sea Cucumber	Kgs			87,873.75	12,707,458.62	87,873.75	12,707,458.62	تیار شدہ (کانسرگوں)
Dried Shark Fins	Kgs			11,983.59	2,412,028.72	11,983.59	2,412,028.72	تیار شدہ (کانسرگوں)
Dried Skipjack	Kgs	331,185.00	15,371,697.02	5,353,034.37	97,406,586.29	5,684,219.37	112,778,283.31	تیار شدہ
Dried Skipjack Tuna Fish Chips	Kgs			12,980.00	150,405.12	12,980.00	150,405.12	تیار شدہ (کانسرگوں)
Fish Meal	Kgs	353,625.00	2,322,910.55			353,625.00	2,322,910.55	تیار شدہ
Fish Soup	Ltr	3,800.00	18,555.40			3,800.00	18,555.40	تیار شدہ
Flours, Meals And Pellets Of Fish, Etc, Unfit For Human Consumption	Kgs	2,593,302.00	17,921,514.04			2,593,302.00	17,921,514.04	تیار شدہ (کانسرگوں)
Fresh Or Chilled Skipjack Loins	Kgs			26.62	615.77	26.62	615.77	تیار شدہ (کانسرگوں)
Fresh Or Chilled Big Eye Tuna Loins	Kgs			6,936.54	405,188.50	6,936.54	405,188.50	تیار شدہ (کانسرگوں)
Fresh Or Chilled Bigeye Tunas	Kgs	16,654.94	1,604,221.14	958,057.00	65,834,691.55	974,711.94	67,438,912.69	تیار شدہ (کانسرگوں)
Fresh Or Chilled Grouper	Kgs	25.50	1,486.48	203,390.38	14,996,381.60	203,415.88	14,997,868.08	تیار شدہ (کانسرگوں)
Fresh Or Chilled Kurumas	Kgs			431.00	3,864.87	431.00	3,864.87	تیار شدہ (کانسرگوں)
Fresh Or Chilled Marlin	Kgs			73,775.02	959,686.24	73,775.02	959,686.24	تیار شدہ (کانسرگوں)
Fresh Or Chilled Marlin Loins	Kgs			5,031.37	57,796.04	5,031.37	57,796.04	تیار شدہ (کانسرگوں)
Fresh Or Chilled Reef Fish	Kgs	636.65	36,803.64	31,499.25	346,370.75	32,135.90	383,174.39	تیار شدہ (کانسرگوں)
Fresh Or Chilled Reef Fish Fillets	Kgs			2,119.28	20,767.65	2,119.28	20,767.65	تیار شدہ (کانسرگوں)
Fresh Or Chilled Reef Fish Loins	Kgs			88.46	909.39	88.46	909.39	تیار شدہ (کانسرگوں)
Fresh Or Chilled Shark	Kgs			0.40	51.40	0.40	51.40	تیار شدہ (کانسرگوں)
Fresh Or Chilled Skipjack Or Stripe-Bellied Bonito	Kgs			3,910.30	63,079.87	3,910.30	63,079.87	تیار شدہ (کانسرگوں)
Fresh Or Chilled Yellow Finned Tuna Fillets	Kgs			708.15	11,622.81	708.15	11,622.81	تیار شدہ (کانسرگوں)
Fresh Or Chilled Yellow Finned Tuna Loins	Kgs	7,798.36	897,481.07	2,280,217.54	136,202,589.29	2,288,015.90	137,100,070.36	تیار شدہ (کانسرگوں)
Fresh Or Chilled Yellowfin Tuna Belly Flap	Kgs			394.08	25,682.00	394.08	25,682.00	تیار شدہ (کانسرگوں)
Fresh Or Chilled Yellowfin Tunas	Kgs	1,118,133.75	78,281,357.24	4,599,331.87	156,880,762.91	5,717,465.62	235,162,120.15	تیار شدہ (کانسرگوں)
Frozen Bigeye Tuna	Kgs	163,335.00	1,518,707.94	98,785.00	1,452,668.66	262,120.00	2,971,376.60	تیار شدہ (کانسرگوں)
Frozen Grouper	Kgs			12.50	1,606.25	12.50	1,606.25	تیار شدہ (کانسرگوں)
Frozen Grouper Fillets	Kgs			15.00	1,638.37	15.00	1,638.37	تیار شدہ (کانسرگوں)
Frozen Marlin	Kgs			60,023.00	781,906.41	60,023.00	781,906.41	تیار شدہ (کانسرگوں)
Frozen Reef Fish	Kgs			7,794.00	83,997.23	7,794.00	83,997.23	تیار شدہ (کانسرگوں)
Frozen Reef Fish Fillets	Kgs			11.64	119.63	11.64	119.63	تیار شدہ (کانسرگوں)
Frozen Shark	Kgs			3,167.00	10,173.98	3,167.00	10,173.98	تیار شدہ (کانسرگوں)
Frozen Shark Fins	Kgs			4,195.00	57,118.25	4,195.00	57,118.25	تیار شدہ (کانسرگوں)
Frozen Skipjack Or Stripe-Bellied Bonito	Kgs	53,442,195.00	513,270,830.12	24,345,202.42	248,587,231.92	77,787,397.42	761,858,062.04	تیار شدہ (کانسرگوں)
Frozen Trout	Kgs			213.00	32,067.17	213.00	32,067.17	تیار شدہ (کانسرگوں)
Frozen Yellowfin Tuna	Kgs	2,628,168.00	31,642,899.39	5,312,884.91	58,139,746.04	7,941,052.91	89,782,645.43	تیار شدہ (کانسرگوں)
Frozen Yellowfin Tuna Loins	Kgs	41,400.00	1,472,545.75			41,400.00	1,472,545.75	تیار شدہ (کانسرگوں)
Live Grouper	Nos			100,329.00	10,094,939.94	100,329.00	10,094,939.94	تیار شدہ (کانسرگوں)
Live Ornamental Fish	Nos			336,156.00	8,800,934.29	336,156.00	8,800,934.29	تیار شدہ (کانسرگوں)
Salted Dried Bigeye Tuna Belly Flap	Kgs			1,125.00	10,617.30	1,125.00	10,617.30	تیار شدہ (کانسرگوں)
Salted Dried Jack	Kgs			104,118.50	1,222,561.11	104,118.50	1,222,561.11	تیار شدہ (کانسرگوں)
Salted Dried Barracuda	Kgs			2,005.00	18,716.62	2,005.00	18,716.62	تیار شدہ (کانسرگوں)
Salted Dried Dog Tooth	Kgs			31,376.00	287,027.98	31,376.00	287,027.98	تیار شدہ (کانسرگوں)
Salted Dried Dolphin Fish	Kgs			22,126.00	211,415.37	22,126.00	211,415.37	تیار شدہ (کانسرگوں)
Salted Dried Green Job Fish	Kgs			30,658.00	332,706.85	30,658.00	332,706.85	تیار شدہ (کانسرگوں)
Salted Dried Rainbow Runner	Kgs			257,942.38	3,525,610.11	257,942.38	3,525,610.11	تیار شدہ (کانسرگوں)
Salted Dried Reef Fish	Kgs			49,233.00	680,306.34	49,233.00	680,306.34	تیار شدہ (کانسرگوں)
Salted Dried Shark	Kgs			271,156.00	3,294,136.07	271,156.00	3,294,136.07	تیار شدہ (کانسرگوں)
Salted Dried Skipjack	Kgs			2,132,096.79	22,186,723.68	2,132,096.79	22,186,723.68	تیار شدہ (کانسرگوں)
Salted Dried Tuna Belly Flap	Kgs			2,915.00	28,213.44	2,915.00	28,213.44	تیار شدہ (کانسرگوں)
Salted Dried Vahoo	Kgs			4,865.00	46,345.85	4,865.00	46,345.85	تیار شدہ (کانسرگوں)
Salted Dried Yellowfin Tuna	Kgs			3,910.00	36,157.97	3,910.00	36,157.97	تیار شدہ (کانسرگوں)
Salted Dried Yellowfin Tuna Belly Flap	Kgs			1,200.00	13,390.21	1,200.00	13,390.21	تیار شدہ (کانسرگوں)
Shark-Liver Oil	Ltr			5,780.50	311,973.58	5,780.50	311,973.58	تیار شدہ (کانسرگوں)
Smoked Marlin	Kgs			215.00	1,760.45	215.00	1,760.45	تیار شدہ (کانسرگوں)
Smoked Skipjack	Kgs			2,775.00	19,612.31	2,775.00	19,612.31	تیار شدہ (کانسرگوں)
Steamed Tuna Loins	Kgs	144,900.00	5,107,308.94			144,900.00	5,107,308.94	تیار شدہ (کانسرگوں)
Steamed Skipjack Loins	Kgs	1,314,346.00	45,471,164.80			1,314,346.00	45,471,164.80	تیار شدہ (کانسرگوں)

2006 අපනයන අගයන් සහ අපනයන රටවලින්: 13 වන වගුව

Table 13: Exports by Country, 2006

Country	Govermemnt Value (Rf)	Private Value (Rf)	Total Value (Rf)	රට
TOTAL	861,202,872.77	848,786,565.93	1,709,989,438.70	මුළු
AUSTRALIA		1,896.66	1,896.66	නිරෝධාන
AUSTRIA		8,995.00	8,995.00	නිරෝධාන
BAHREIN		7,710.00	7,710.00	බහරේන්
BELGIUM		72,306.29	72,306.29	බෙල්ජියම්
CANADA		959,559.71	959,559.71	කැනඩා
CHINA		7,528,017.06	7,528,017.06	චීනය
COSTA RICA		832,022.07	832,022.07	කොස්ටා රිකා
CZECH REPUBLIC		11,565.00	11,565.00	චෙක් ජනරජය
DENMARK	372,519.14	2,045,079.09	2,417,598.23	දේන්මාර්ක
FRANCE	26,641,184.89	61,508,791.69	88,149,976.58	ප්‍රංශය
GERMANY	51,990,860.89	14,334,720.32	66,325,581.21	ජර්මනිය
GREECE	1,066,952.46		1,066,952.46	ග්‍රීසිය
HONG KONG		12,131,463.88	12,131,463.88	හොං කොං
INDIA		341,634.97	341,634.97	ඉන්දියාව
IRAN	8,339,328.09	21,904,657.60	30,243,985.69	ඉරාන්
IRELAND		42,270.71	42,270.71	ආයර්ලන්තය
ITALY	51,923,839.67	11,899,755.03	63,823,594.70	ඊතාලියාව
JAPAN	71,634,352.59	189,549,997.99	261,184,350.58	ජපානය
MALAYSIA		1,572,582.15	1,572,582.15	මලේසියාව
MAURITIUS	436.75	12.85	449.60	මොරිෂියස්
NETHERLANDS	17,022,348.40	16,217,269.16	33,239,617.56	නෙදර්ලන්තය
NEW ZEALAND		178,895.51	178,895.51	නිව්සීලන්තය
OMAN		10,908,594.48	10,908,594.48	ඔමාන්
SINGAPORE	39,275,325.34	20,583,975.89	59,859,301.23	සිංගප්පූරුව
SOUTH KOREA	47,155,863.35	3,233,230.73	50,389,094.08	කොරියාව
SPAIN	3,016,730.25	38,196.62	3,054,926.87	ස්පේන්
SRI LANKA	27,182,087.07	195,343,903.45	222,525,990.52	ශ්‍රී ලංකාව
SWITZERLAND		55,093.20	55,093.20	ස්විට්සර්ලන්තය
TAIWAN	54,672,108.49	39,817,718.21	94,489,826.70	තායිවානය
THAILAND	291,588,154.18	160,533,001.39	452,121,155.57	තායිලන්තය
U.A.E	48,841,200.25	14,833,418.46	63,674,618.71	එම්.ඊ.එම්.
U.K	119,519,940.69	49,345,304.70	168,865,245.39	බ්‍රිතාන්‍යය
U.S.A	959,640.27	12,944,926.06	13,904,566.33	එම්.ඊ.එම්.

2006 : 15 : 2006
Table 15: Monthly Fresh Tuna Purchased , 2006
 (2006)
 In metrictons (MT)

Month	Purchased	
TOTAL	98,014.89	
January	11,352.40	
February	10,419.37	
March	6,755.16	
April	15,009.09	
May	10,214.66	
June	8,672.65	
July	2,012.95	
August	6,495.54	
September	6,323.88	
October	10,044.23	
November	6,929.16	
December	3,785.79	

2006 : 16 : 2006
Table 16: Fresh Fish Purchased, 2006
 (މަސްދާނުގެ ފަންދު) (In metric tons (MT))

Region	Purchased	މަސްދާނު	ފަންދު (MT)
REPUBLIC	98,014.89	މަސްދާނު	ފަންދު (MT)
EEZ*			* ފަންދު (MT)
Malé	-		ފަންދު (MT)
North Thiladhunmathi (HA)	7,538.83		(a) ފަންދު (MT)
South Thiladhunmathi (HD)	401.44		(b) ފަންދު (MT)
North Miladhunmadulu (SH)	462.04		(c) ފަންދު (MT)
South Miladhunmadulu (NO)	-		(d) ފަންދު (MT)
North Maalhosmadulu (RA)	2,495.45		(e) ފަންދު (MT)
South Maalhosmadulu (BA)	495.03		(f) ފަންދު (MT)
Faadhippolhu (LH)	4,620.58		(g) ފަންދު (MT)
Malé Atoll (KA)	2,596.67		(h) ފަންދު (MT)
North Ari Atoll (AA)	-		(i) ފަންދު (MT)
South Ari Atoll (AD)	-		(j) ފަންދު (MT)
Felidhu Atoll (VA)	-		(k) ފަންދު (MT)
Mulaku Atoll (ME)	1,178.96		(l) ފަންދު (MT)
North Nilandhe (FA)	154.32		(m) ފަންދު (MT)
South Nilandhe (DH)	1,385.59		(n) ފަންދު (MT)
Kolhumadulu (TH)	4,420.58		(o) ފަންދު (MT)
Hadhdhunmathi (LA)	7,765.45		(p) ފަންދު (MT)
North Huvadhu (GA)	24,794.56		(q) ފަންދު (MT)
South Huvadhu (GD)	18,147.58		(r) ފަންދު (MT)
Fuvahmulah (GN)	2,352.44		(s) ފަންދު (MT)
Addu (SE)	19,205.37		(t) ފަންދު (MT)

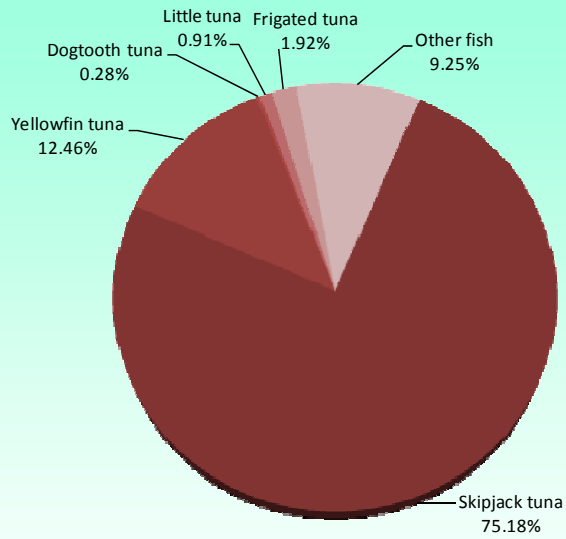
2006 18 : 2006
Table 18: Lobster Catch, 2006

Region	Numbers	
REPUBLIC	66,662	
Malé		
North Thiladhunmathi (HA)		(a) 1,000
South Thiladhunmathi (HD)		(b) 1,000
North Miladhunmadulu (SH)	2,151	(c) 1,000
South Miladhunmadulu (NO)		(d) 1,000
North Maalhosmadulu (RA)	38,235	(e) 1,000
South Maalhosmadulu (BA)		(f) 1,000
Faadhippolhu (LH)	64	(g) 1,000
Malé Atoll (KA)	14,194	(h) 1,000
North Ari Atoll (AA)	118	(i) 1,000
South Ari Atoll (AD)		(j) 1,000
Felidhu Atoll (VA)		(k) 1,000
Mulaku Atoll (ME)	834	(l) 1,000
North Nilandhe (FA)	6,384	(m) 1,000
South Nilandhe (DH)		(n) 1,000
Kolhumadulu (TH)	1,107	(o) 1,000
Hadhdhunmathi (LA)	643	(p) 1,000
North Huvadhu (GA)	140	(q) 1,000
South Huvadhu (GD)	2,792	(r) 1,000
Fuvahmulah (GN)		(s) 1,000
Addu (SE)		(t) 1,000

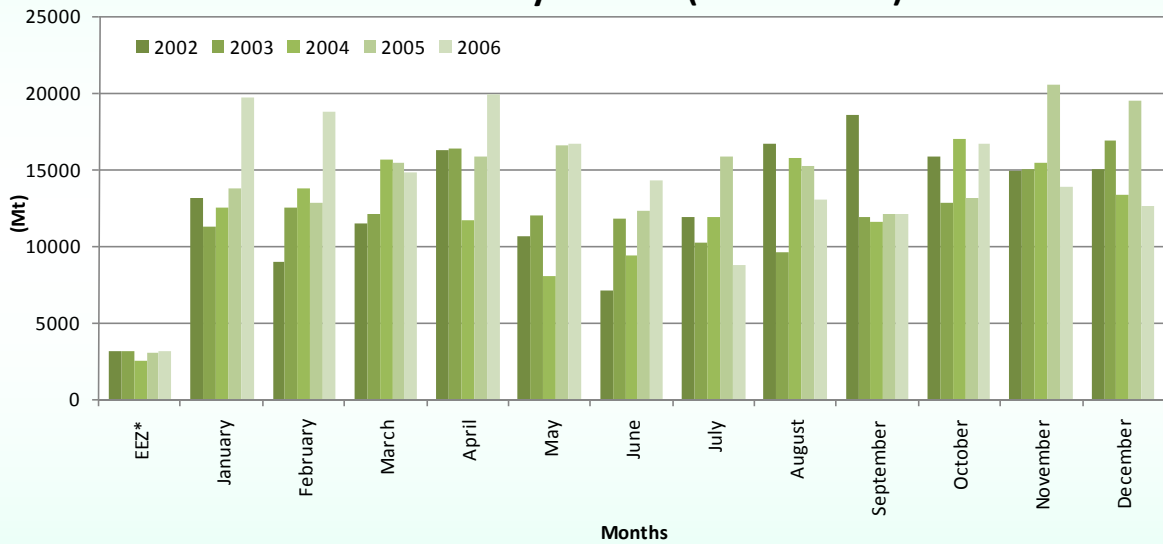
2006 මාසික මුහුදු මිරිසිංහ මසුල්ල : 19 වන වගුව
Table 19: Monthly Sea Cucumber Catch, 2006
 (in numbers)

Month	Sea Cucumber types							Total	මුළු
	අලානාසි	බාටු	එලිෆන්ට්	කැච්චලා	ෆීරු	හෝලි	නිවැරිනි		
Month	Alanaasi	Batu	Elephant	Kachchala	Feeru	Holhi	Others	Total	මුළු
TOTAL	7,373	8,912	5,461	8,040	32,593	38,607	48,893	149,879	මුළු
January	707	871	276	1,114	2,462	3,296	2,633	11,359	ජනවාරි
February	674	795	737	1,080	2,215	6,854	6,088	18,443	පෙබරවාරි
March	637	699	667	1,025	4,818	3,999	3,679	15,524	මාර්ච්
April	1,283	1,036	887	737	10,641	4,826	7,757	27,167	අප්‍රිල්
May	727	1,229	1,001	1,216	4,747	7,820	7,261	24,001	මැයි
June	155	313	77	118	100	310	453	1,526	ජූන්
July	562	607	434	637	404	1,800	4,674	9,118	ජූලි
August	395	511	185	342	1,007	2,097	4,807	9,344	අගස්තු
September	566	577	101	542	357	3,665	6,216	12,024	සැප්තැම්බර්
October	167	209	70	192	71	702	2,068	3,479	ඔක්තෝබර්
November	723	740	535	501	5,070	801	2,565	10,935	නොවැම්බර්
December	777	1,325	491	536	701	2,437	692	6,959	දෙසැම්බර්

Fish catch by species, 2006



Fish Catch by months (2002- 2006)



Fresh Fish Purchased by Zones, 2006

