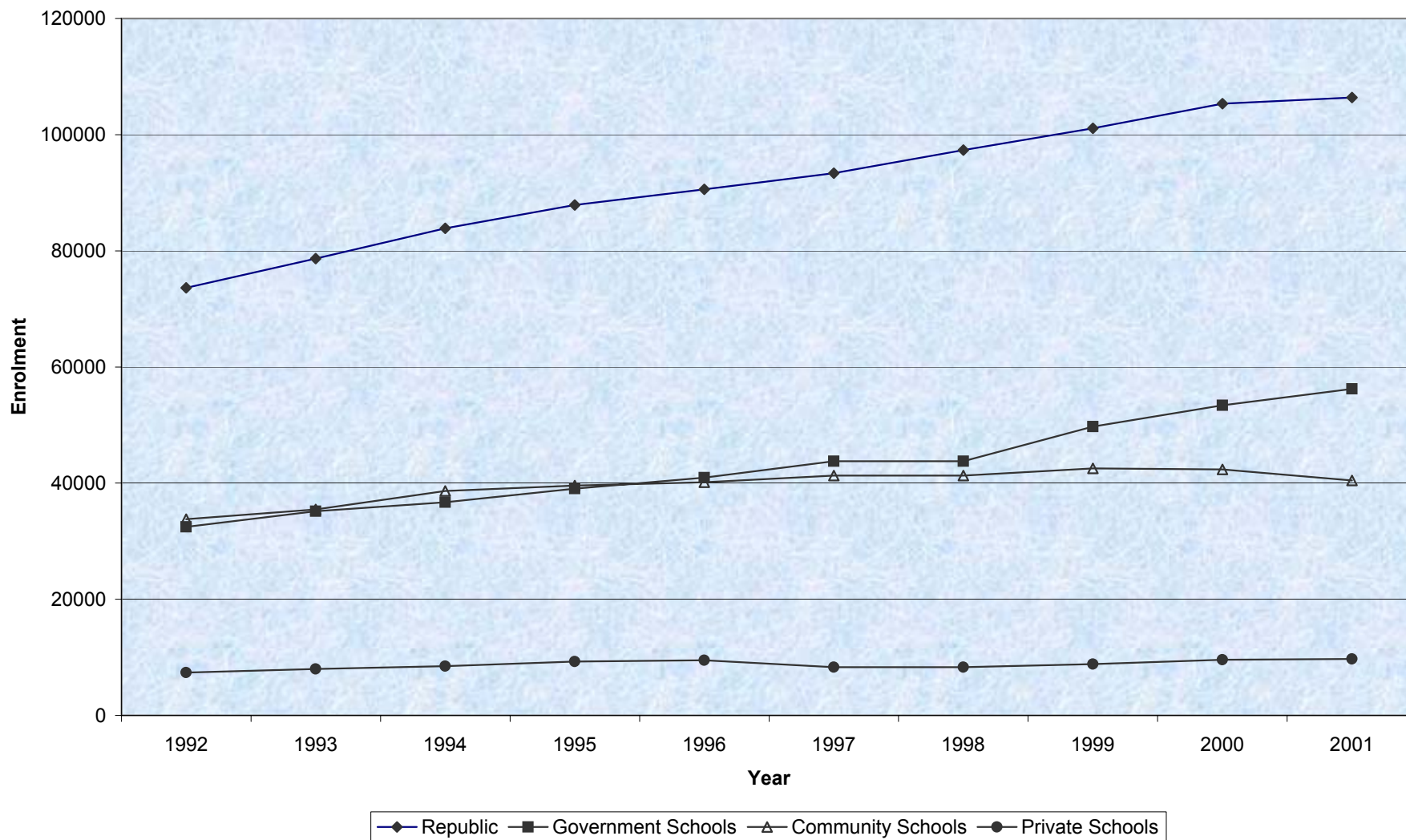






ދިވެހިރާއްޖޭގެ ޖުމްހޫރިއްޔާ ގުޅިގެން ދިވެހިރާއްޖޭގެ ސަރުކާރުގެ ޖުމްހޫރިއްޔާ ގުޅިގެން  
(ނަންދަރުމަތި ސަރުކާރުގެ ޖުމްހޫރިއްޔާ ގުޅިގެން)

STUDENT ENROLMENT IN MALDIVES (GROSS)  
(BY TYPE OF PROVISION)  
1992 - 2001



ಸಿಬಿಇ ಸರ್ಕಾರಿ ಶಾಲೆಗಳಲ್ಲಿ ಪ್ರಾಥಮಿಕ ಮತ್ತು ಮಾಧ್ಯಮಿಕ ಶಿಕ್ಷಣದ ಪ್ರವೃತ್ತಿ

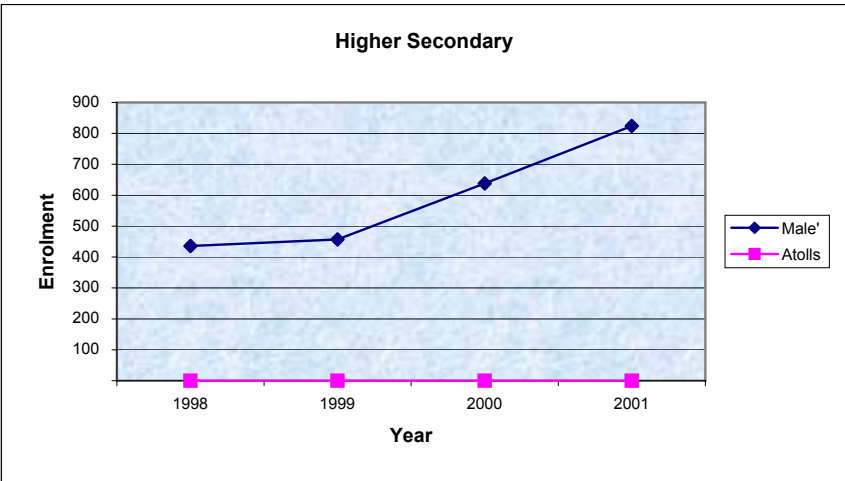
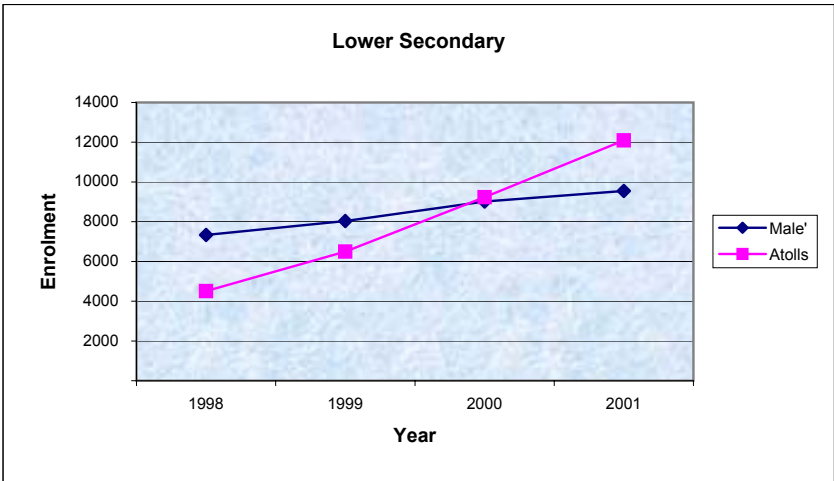
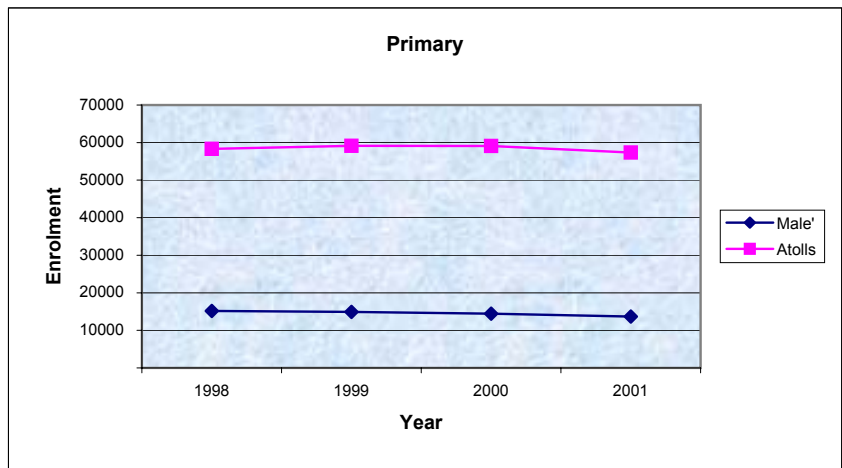
ENROLMENT TRENDS BY LEVEL

(1998 - 2001)

LEVEL	1998			1999			2000			2001		
	FEMALE	MALE	TOTAL	FEMALE	MALE	TOTAL	FEMALE	MALE	TOTAL	FEMALE	MALE	TOTAL
1- Pre - Primary (NURS, LKG, UKG)	5570	5938	11508	5815	6216	12031	6324	6570	12894	6335	6474	12809
2- Primary (Grades 1 - 7)	36101	37418	73519	36203	37847	74050	35764	37758	73522	34384	36670	71054
3- Lower Secondary (Grades 8 - 10)	6033	5812	11845	7471	7060	14531	9518	8736	18254	11368	10276	21644
4- Higher Secondary (Grades 11 - 12)	186	250	436	192	265	457	274	364	638	330	494	824
5- Special Classes	6	9	15	6	6	12	21	27	48	31	29	60
<b>TOTAL</b>	<b>47896</b>	<b>49427</b>	<b>97323</b>	<b>49687</b>	<b>51394</b>	<b>101081</b>	<b>51901</b>	<b>53455</b>	<b>105356</b>	<b>52448</b>	<b>53943</b>	<b>106391</b>



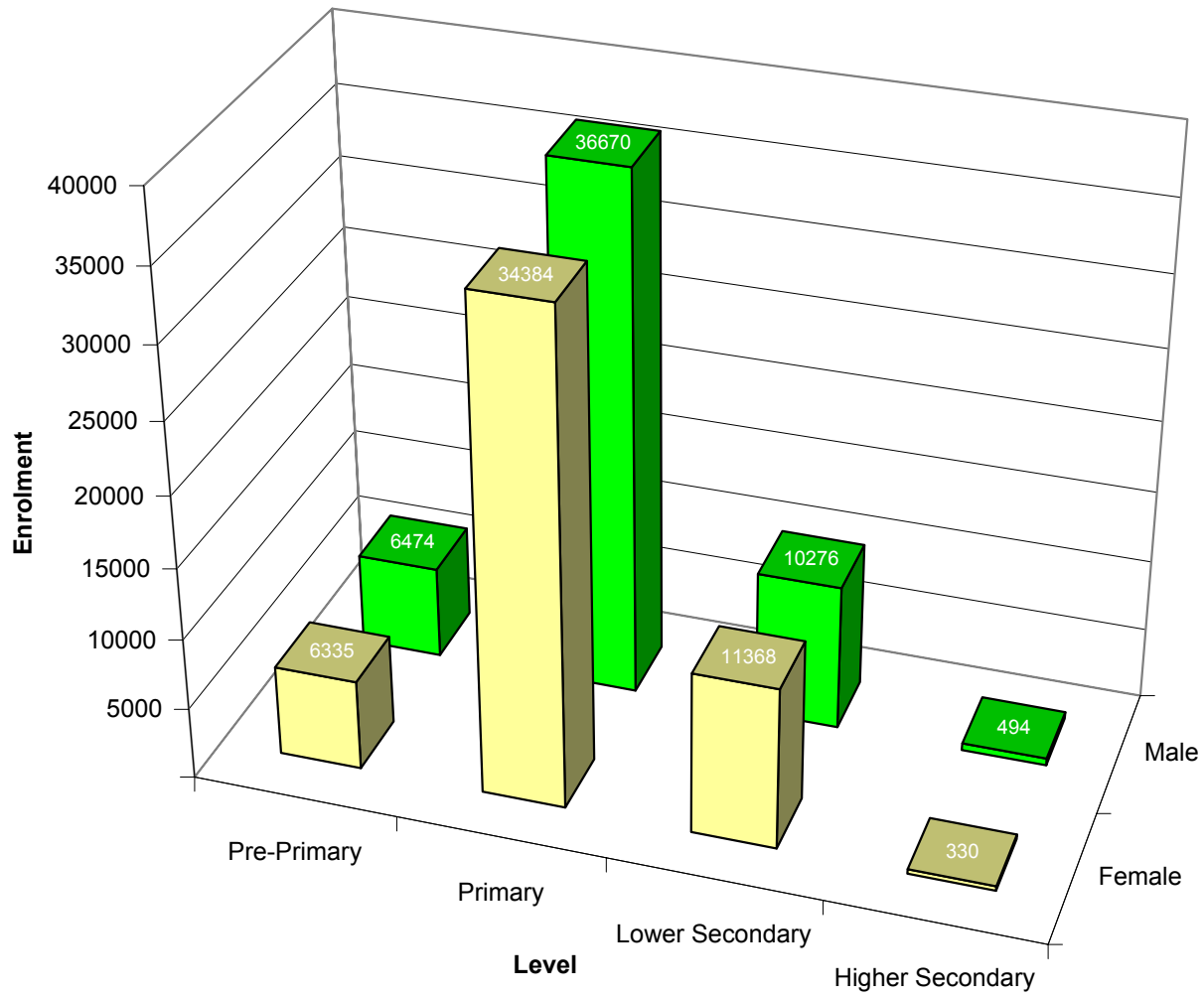
(ދިވެހިރާއްޖޭގެ ސަރުކާރުގެ ގެޒެޓްގައި ބަޔާންކޮށްފައިވާ ގޮތުގައި)  
**ENROLMENT TRENDS BY LEVEL - MALE' AND ATOLLS**  
 (1998 - 2001)



ދިވެހިސަރުކާރުގެ ގެޒެޓް ގައި ބަޔާންކޮށްފައިވާ ގޮތުން  
**ENROLMENT BY LEVEL AND PROVISION**  
 (MARCH 2001)

LEVEL	ATOLLS						MALE'						REPUBLIC					
	GOVERNMENT			COM. & PVT.			GOVERNMENT			COM. & PVT.			GOVERNMENT			COM. & PVT.		
	Female	Male	Total	Female	Male	Total	Female	Male	Total	Female	Male	Total	Female	Male	Total	Female	Male	Total
1- Pre - Primary (NURS, LKG, UKG)				4234	4391	8625				2101	2083	4184				6335	6474	12809
2- Primary (Grades 1 - 7)	13942	15421	29363	13548	14456	28004	5045	5399	10444	1849	1394	3243	18987	20820	39807	15397	15850	31247
3- Lower Secondary (Grades 8 - 10)	5527	4878	10405	866	822	1688	2615	2513	5128	2360	2063	4423	8142	7391	15533	3226	2885	6111
4- Higher Secondary (Grades 11 - 12)							330	494	824				330	494	824			
5- Special Classes							31	29	60				31	29	60			
<b>TOTAL</b>	<b>19469</b>	<b>20299</b>	<b>39768</b>	<b>18648</b>	<b>19669</b>	<b>38317</b>	<b>8021</b>	<b>8435</b>	<b>16456</b>	<b>6310</b>	<b>5540</b>	<b>11850</b>	<b>27490</b>	<b>28734</b>	<b>56224</b>	<b>24958</b>	<b>25209</b>	<b>50167</b>

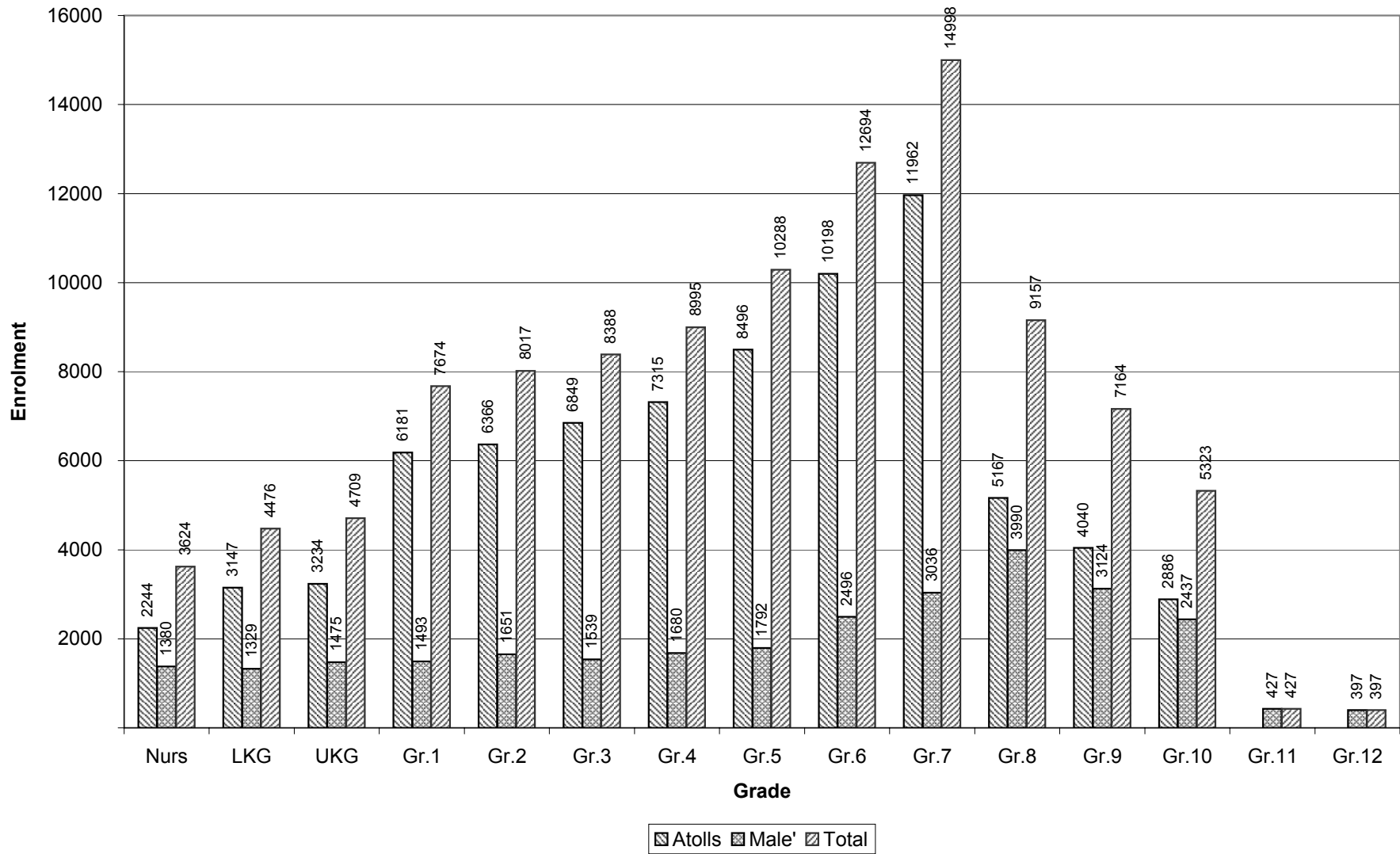
جمهورية مصر العربية  
 STUDENT ENROLMENT BY LEVEL - THE REPUBLIC  
 (MARCH 2001)



ދިވެހިސަރުކާރުގެ ގެޒެޓް ގައި ބަޔާންކޮށްފައިވާ ގޮތުން  
**ENROLMENT IN REGIONS BY GRADE AND SEX**  
**(MARCH 2001)**

Name of Atoll	NURS		LKG		UKG		GR. 1		GR. 2		GR. 3		GR. 4		GR. 5		GR. 6		GR. 7		GR. 8		GR. 9		GR. 10		GR. 11		GR. 12		Special		TOTAL	TOTAL	TOTAL	% National
	F	M	F	M	F	M	F	M	F	M	F	M	F	M	F	M	F	M	F	M	F	M	F	M	F	M	F	M	F	M	F	M	F	M	F	M
Haa Alifu	91	85	155	171	159	156	219	238	246	237	267	315	300	331	357	341	384	440	478	437	178	198	118	115	80	71							3032	3135	6167	5.80
Haa Dhaalu	80	84	176	171	189	209	256	288	329	311	312	325	344	364	346	425	455	445	612	607	146	121	164	116	152	102							3561	3568	7129	6.70
Shaviyani	52	59	13	18	12	15	170	180	198	177	181	197	221	228	242	257	299	350	434	394	146	172	133	129	75	71							2176	2247	4423	4.16
Noonu	63	51	53	62	61	68	179	219	163	211	197	196	195	213	239	232	317	335	360	324	167	119	96	106	91	88							2181	2224	4405	4.14
Raa	56	55	71	75	87	88	225	250	290	288	283	324	326	377	337	384	423	489	474	436	186	218	112	84	41	47							2911	3115	6026	5.66
Baa	24	33	90	84	86	95	121	160	123	148	160	165	162	185	182	225	203	281	323	320	158	170	123	155	128	122							1883	2143	4026	3.78
Lhaviyani	80	82	77	102	96	86	127	128	129	157	135	153	152	152	179	227	231	243	236	224	143	114	86	102	138	110							1809	1880	3689	3.47
Kaafu	78	67	80	85	59	76	115	155	122	145	123	146	129	186	174	220	215	264	208	201	78	74	34	31	20	23							1435	1673	3108	2.92
Alifu Alifu	15	20	25	34	36	31	74	76	50	81	85	83	59	86	96	110	127	123	143	148	25	24	33	26	10	7							778	849	1627	1.53
Alifu Dhaalu	32	46	49	68	49	31	101	109	81	98	112	121	111	140	139	147	184	243	198	239	85	92	71	75	47	43							1259	1452	2711	2.55
Vaavu	5	7	13	7	12	11	20	22	22	28	27	22	28	38	32	41	39	45	42	49	20	29	21	27	15	7							296	333	629	0.59
Meemu	5	6	33	38	22	35	78	79	74	61	78	69	95	81	108	113	140	172	100	138	112	88	77	90	35	43							957	1013	1970	1.85
Faafu	9	8	10	8	17	12	57	58	65	71	68	72	73	90	79	90	104	121	116	104	68	65	41	43	24	30							731	772	1503	1.41
Dhaalu	51	34	4	10	7	7	72	87	68	95	94	96	80	95	95	114	100	116	155	155	57	66	43	34	30	44							856	953	1809	1.70
Thaa	74	89	94	98	95	91	132	160	132	169	146	173	171	172	202	206	227	239	360	374	158	136	84	93	60	43							1935	2043	3978	3.74
Laamu	21	26	51	62	77	87	169	211	219	220	204	261	216	259	258	308	296	324	380	395	200	187	145	142	90	78							2326	2560	4886	4.59
Gaafu Alifu	37	37	44	58	34	35	160	150	132	150	160	163	135	176	173	202	198	201	178	199	116	98	117	86	82	65							1566	1620	3186	2.99
Gaafu Dhaalu	133	111	149	138	158	175	227	215	219	181	238	236	241	242	264	336	295	339	333	349	177	167	136	115	111	67							2681	2671	5352	5.03
Gnaviyani	61	46	90	99	59	87	145	141	122	139	114	132	131	135	150	221	182	208	226	207	145	107	100	58	117	70							1642	1650	3292	3.09
Seenu	151	180	253	229	271	253	294	314	291	324	287	329	273	323	326	319	368	433	640	666	309	248	392	287	247	162							4102	4067	8169	7.68
Male'	685	695	702	627	714	761	739	754	789	862	742	797	838	842	888	904	1314	1182	1584	1452	2015	1975	1698	1426	1262	1175	158	269	172	225	31	29	14331	13975	28306	26.61
<b>TOTAL</b>	<b>1803</b>	<b>1821</b>	<b>2232</b>	<b>2244</b>	<b>2300</b>	<b>2409</b>	<b>3680</b>	<b>3994</b>	<b>3864</b>	<b>4153</b>	<b>4013</b>	<b>4375</b>	<b>4280</b>	<b>4715</b>	<b>4866</b>	<b>5422</b>	<b>6101</b>	<b>6593</b>	<b>7580</b>	<b>7418</b>	<b>4689</b>	<b>4468</b>	<b>3824</b>	<b>3340</b>	<b>2855</b>	<b>2468</b>	<b>158</b>	<b>269</b>	<b>172</b>	<b>225</b>	<b>31</b>	<b>29</b>	<b>52448</b>	<b>53943</b>	<b>106391</b>	<b>100.00</b>

ޖިމްނަވަރުކަން ޖަނަވަރުކަން ޖަނަވަރުކަން ޖަނަވަރުކަން ޖަނަވަރުކަން  
 TOTAL ENROLMENT BY GRADE (ATOLLS AND MALE')  
 (MARCH 2001)







ދިވެހިރާއްޖޭގެ ސަރުކާރުގެ ގެޒެޓް ގައި ބަޔާންކޮށްފައިވާ ގޮތުން

ENROLMENT TRENDS BY REGIONS

(2000 - 2001)

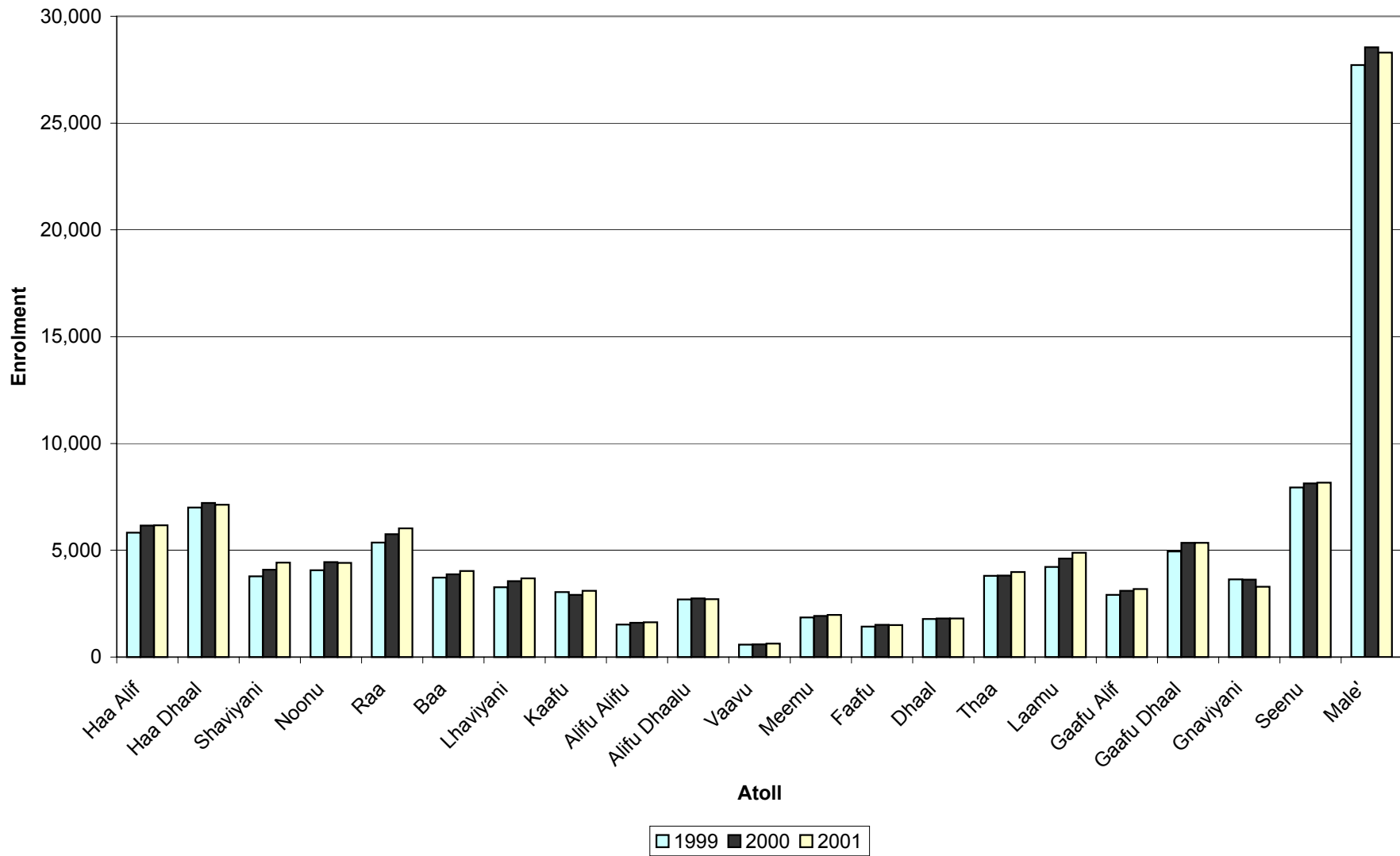
Name of Atoll	2000						2001					
	Female	change *	Male	change *	Total	change *	Female	change *	Male	change *	Total	change *
Haa Alifu	3,018	5.19%	3,137	6.34%	6,155	5.77%	3,032	0.46%	3,135	-0.06%	6,167	0.19%
Haa Dhaalu	3,637	4.18%	3,581	2.20%	7,218	3.19%	3,561	-2.09%	3,568	-0.36%	7,129	-1.23%
Shaviyani	2,040	8.51%	2,054	8.33%	4,094	8.42%	2,176	6.67%	2,247	9.40%	4,423	8.04%
Noonu	2,210	8.49%	2,230	9.80%	4,440	9.14%	2,181	-1.31%	2,224	-0.27%	4,405	-0.79%
Raa	2,802	8.52%	2,956	6.37%	5,758	7.41%	2,911	3.89%	3,115	5.38%	6,026	4.65%
Baa	1,833	2.57%	2,039	5.21%	3,872	3.95%	1,883	2.73%	2,143	5.10%	4,026	3.98%
Lhaviyani	1,751	10.75%	1,802	6.94%	3,553	8.79%	1,809	3.31%	1,880	4.33%	3,689	3.83%
Kaafu	1,328	-6.15%	1,587	-2.22%	2,915	-4.05%	1,435	8.06%	1,673	5.42%	3,108	6.62%
Alifu Alifu	762	1.06%	845	9.74%	1,607	5.45%	778	2.10%	849	0.47%	1,627	1.24%
Alifu Dhaalu	1,280	-0.39%	1,461	3.54%	2,741	1.67%	1,259	-1.64%	1,452	-0.62%	2,711	-1.09%
Vaavu	281	2.18%	316	3.95%	597	3.11%	296	5.34%	333	5.38%	629	5.36%
Meemu	968	4.88%	952	2.04%	1,920	3.45%	957	-1.14%	1,013	6.41%	1,970	2.60%
Faafu	735	4.40%	775	7.64%	1,510	6.04%	731	-0.54%	772	-0.39%	1,503	-0.46%
Dhaalu	853	-0.70%	948	2.93%	1,801	1.18%	856	0.35%	953	0.53%	1,809	0.44%
Thaa	1,877	-0.27%	1,934	0.62%	3,811	0.18%	1,935	3.09%	2,043	5.64%	3,978	4.38%
Laamu	2,227	11.13%	2,384	7.44%	4,611	9.19%	2,326	4.45%	2,560	7.38%	4,886	5.96%
Gaafu Alifu	1,533	5.58%	1,567	7.55%	3,100	6.57%	1,566	2.15%	1,620	3.38%	3,186	2.77%
Gaafu Dhaalu	2,665	9.81%	2,686	6.55%	5,351	8.14%	2,681	0.60%	2,671	-0.56%	5,352	0.02%
Gnaviyani	1,787	-2.30%	1,834	1.27%	3,621	-0.52%	1,642	-8.11%	1,650	-10.03%	3,292	-9.09%
Seenu	4,108	3.27%	4,026	1.72%	8,134	2.49%	4,102	-0.15%	4,067	1.02%	8,169	0.43%
Male'	14,206	3.90%	14,341	2.14%	28,547	3.01%	14,331	0.88%	13,975	-2.55%	28,306	-0.84%
<b>TOTAL</b>	<b>51,901</b>	<b>12.82%</b>	<b>53,455</b>	<b>12.84%</b>	<b>105,356</b>	<b>4.23%</b>	<b>52,448</b>	<b>1.05%</b>	<b>53,943</b>	<b>0.91%</b>	<b>106,391</b>	<b>0.98%</b>

\* Change column shows the change over previous year.

ދިވެހިރާއްޖޭގެ ސަރުކާރުގެ ގެޒެޓް ގައި ބަޔާންކޮށްފައިވާ ގޮތުން

ENROLMENT TRENDS BY REGIONS

(1999 - 2001)



ಸರ್ಕಾರಿ ಶಾಲೆಗಳಲ್ಲಿ ಪ್ರವೇಶಿಸಿದ ಮಕ್ಕಳ ಸಂಖ್ಯೆ  
 SCHOOLS' ENROLMENTS IN MALE' BY GRADE AND SEX  
 (MARCH 2001)

SCHOOL	Type	NURS		LKG		UKG		GR. 1		GR. 2		GR. 3		GR. 4		GR. 5		GR. 6		GR. 7		GR. 8		GR. 9		GR. 10		GR. 11		GR. 12		Special		TOTAL	TOTAL	TOTAL				
		F	M	F	M	F	M	F	M	F	M	F	M	F	M	F	M	F	M	F	M	F	M	F	M	F	M	F	M	F	M	F	M	F	M					
THAJUDHDHEEN SCHOOL	G							93	106	123	101	88	100	98	85	93	107	93	109																	588	608	1196		
ISKANDHAR SCHOOL	G							151	160	133	151	129	104	176	174	164	178	193	181																	946	948	1894		
JAMAALUDHDHEEN SCHOOL	G							161	135	154	163	103	125	105	109	112	98	99	94														31	29	765	753	1518			
KALAAFAANU SCHOOL	G							124	125	129	148	120	131	107	140	78	96	107	99																	665	739	1404		
GHIYASUDDIN SCHOOL	G							85	89	97	116	123	144	83	70	60	68	90	96	174	257															712	840	1552		
IMADHUDDIN SCHOOL	G							88	97	100	125	83	104	98	100	84	77	94	103	503	552																1050	1158	2208	
MUHYIDDIN SCHOOL	G							32	33	29	22	26	16	19	22	17	20	29	29	39	28																191	170	361	
AMINIYA SCHOOL	G																							1054		800		693								2547		2547		
MAJEEDIYYA SCHOOL	G																								1140		677		623								2440		2440	
AL-MADHRASATHUL ARABIYATHUL ISLAMIYYA	G							5	9	4	13	20	24	28	37	26	46	23	34	18	13	10	12													134	188	322		
MAU'HADHUL DHIRASAATHUL ISLAMIYYA	G															11	12	13	13	11	11	7	13	31	29	20	19	10	15	13	14					116	126	242		
CENTRE FOR HIGHER SECONDARY EDUCATION	G																												148	254	159	211					307	465	772	
GALOLHU MADHRASA	C	213	179	189	181	174	177			16	15	23	22	41	39	55	43	71	57	103	58	113	90	54	57	31	43									1083	961	2044		
MAAFANNU MADHRASA	C	114	119	107	94	133	123							22	14	26	29	79	43	93	51	43	30	49	7	23	24									689	534	1223		
MADHRASATHUL AHMADHIYYA	C	217	246	265	177	252	294							24	25	94	77	179	172	217	144	220	150	145	91	60	49									1673	1425	3098		
MADHRASATHUL AMEERU AHMED	C	65	68	58	85	79	85					19	15	24	17	44	41	87	64	104	94	65	124	59	76	39	72									643	741	1384		
ENGLISH PREPARATORY AND SECONDARY SCHOOL	P																					110	109	144	104	248	220	230	159								732	592	1324	
MALE' ENGLISH SCHOOL	P																																					1053	884	1937
MADHRASATHUL ALIYA	P	28	18	23	26	30	27			4	8	8	12	13	10	24	12	53	20	57	33	22	23	10	20	11	10									283	219	502		
MADHRASATHUL FALAAH	P	22	33	27	34	26	35																															75	102	177
SHEIKH ABDUL RAHMAN PRE-SCHOOL	P	26	32	33	30	20	20																															79	82	161
<b>TOTAL</b>		21		685	695	702	627	714	761	739	754	789	862	742	797	838	842	888	904	1314	1182	1584	1452	2015	1975	1698	1426	1262	1175	158	269	172	225	31	29	14331	13975	28306		

G - Government, C - Community, P - Private

  
 SCHOOLS' ENROLMENTS IN HAA ALIFU ATOLL BY GRADE AND SEX  
 (MARCH 2001)

SCHOOL	Type	NURS		LKG		UKG		GR. 1		GR. 2		GR. 3		GR. 4		GR. 5		GR. 6		GR. 7		GR. 8		GR. 9		GR. 10		GR. 11		GR. 12		Special		TOTAL	TOTAL	TOTAL			
		F	M	F	M	F	M	F	M	F	M	F	M	F	M	F	M	F	M	F	M	F	M	F	M	F	M	F	M	F	M	F	M	F	M				
H.A. ATHOLHU MADHRASA (HOARAFUSHI)	G							30	27	27	32	43	46	41	41	50	46	59	67	96	110	45	75	31	30	38	23									460	497	957	
H.A. ATHOLHU THAU'LEEMEE MARKAZ (DHIDHDHOO)	G							35	46	43	50	42	59	41	50	47	48	64	82	125	97	95	76	56	50	29	31									577	589	1166	
MADHRASATHUL SULTHAAN MOHAMED THAKURUFAANUL AUZ'AM (UTHEEMU)	G							9	9	15	9	4	8	19	20	16	13	11	14	18	14															92	87	179	
BAARASHU MADHRASA	C							17	15	26	29	21	33	32	47	45	49	42	30	25	22															208	225	433	
BERINMADHOO SCHOOL	C				4	5		5	1	1	2	4	6	1	5	1	1																			16	20	36	
IHAVANDHOO SCHOOL	C							42	47	34	25	46	48	44	47	66	52	71	66	84	64	32	34	31	35	13	17									463	435	898	
MAARANDHOO MADHRASA	C					9	6	15	11	5	11	10	20	10	12	18	12	15	25	14	5															96	102	198	
GHAZEE MOHAMED PRE-SCHOOL (DHIDHDHOO)	C	14	16	33	36	28	15																													75	67	142	
MADHRASATHUL SABA AHU (FILLADHOO)	C							7	11	11	10	9	15	8	17	11	10	18	19	18	23																82	105	187
MADHRASATHUL SHAHEED ALI THAKURUFAANU (THAKANDHOO)	C			8	8	7	9	6	10	10	5	5	10	11	10	16	19	11	16	10	15															84	102	186	
MADHRASATHUL SHEIKH IBRAHIM (KELAA)	C							20	22	25	22	22	18	25	31	24	32	32	52	39	39	6	13													193	229	422	
MADHRASATHUL AMEEN (HATHIFUSHI)	C							2	2	2	3	3	1	5	2	4	1		4	2	4																18	17	35
MULHADHOO SCHOOL	C			4	3	4	2	4	4	10	5	13	4	6	4	3	9	8	4		10																52	45	97
MURADHOO SCHOOL	C							5	4	6	13	25	18	24	13	26	14	17	22	9	5																112	89	201
THURAAKUNU MADHRASA	C			9	4	6	5	7	5	8	7	3	11	8	13	7	14	11	9	20	10																79	78	157
ULIGAMU MADHRASA	C							4	12	6	2	7	6	11	6	11	10	8	11	5	9																52	56	108
VASHAFARU MADHRASA	C			9	17	14	19	11	12	17	12	10	12	14	13	12	11	17	19	13	10																117	125	242
LILY PRE-SCHOOL (KELAA)	C			26	23	21	26																														47	49	96
AHADHIYYA PRE-SCHOOL (BAARAH)	C			14	10	12	12																														26	22	48
BAARASHU PRE-SCHOOL	C			5	12	10	14																														15	26	41
UMAR MOHAMED PRE-SCHOOL (FILLADHOO)	P	13	11	9	13	10	7																														32	31	63
DHOONI THUNDI NURSERY (UTHEEM)	P	22	20																																		22	20	42
ADAM SALEEM HAN'DHAANEE PRE-SCHOOL (HOARAFUSHI)	P	18	21	28	31	24	24																														70	76	146
HIYALEE - THUTHTHUKUDHINGE THAULEEMDHEY CLASS (IHAVANDHOO)	P	16	9																																		16	9	25
VAFU PRE-SCHOOL (IHAVANDHOO)	P	5	6	9	11	10	10																														24	27	51
ETHUMAA PRE-SCHOOL (THAKANDHOO)	P	3	2	1	3		2																														4	7	11
<b>TOTAL</b>		26	91	85	155	171	159	156	219	238	246	237	267	315	300	331	357	341	384	440	478	437	178	198	118	115	80	71							3032	3135	6167		

Students who have completed Grade 5 at Berinmadhoo Maktab have access to Grade 6 & 7 at H.A Atoll School  
 G - Government, C - Community, P - Private









ދިވެހިސަރުކާރުގެ ގެޒެޓް ގައި ބަޔާންކޮށްފައިވާ ގޮތުން ދިވެހިރާއްޖޭގެ ސަރުކާރުގެ ބޭނުންކުރާ ގޮތުގައި  
 SCHOOLS' ENROLMENTS IN BAA ATOLL BY GRADE AND SEX  
 (MARCH 2001)

SCHOOL	Type	NURS		LKG		UKG		GR. 1		GR. 2		GR. 3		GR. 4		GR. 5		GR. 6		GR. 7		GR. 8		GR. 9		GR. 10		GR. 11		GR. 12		Special		TOTAL	TOTAL	TOTAL
		F	M	F	M	F	M	F	M	F	M	F	M	F	M	F	M	F	M	F	M	F	M	F	M	F	M	F	M	F	M	F	M	F	M	
B. ATHOLHU MADHRASA (DHARAVANDHOO)	G							10	9	13	10	8	17	12	14	12	18	24	16	33	22	14	18	15	19	9	15							150	158	308
B. ATHOLHU THAU'LEEMEE MARUKAZ (EYDHAFUSHI)	G							25	36	30	27	33	34	32	26	52	69	68	104	98	109	71	75	50	80	71	74							530	634	1164
THULHAADHOO SCHOOL	G							22	20	20	26	31	27	32	57	41	44	21	44	57	82	51	46	39	34	29	21							343	401	744
DHONFANU SCHOOL	C			4	8	5	6	5	6	9	9	9	10	7	5	8	10	4	3	7	2												58	59	117	
FEHENDHOO SCHOOL	C	2	3	1	3	5	1	3	1	5	6	2	4	5	7	3	1	7		3													27	35	62	
FULHADHOO SCHOOL	C							2	3	4	5	6	6	3	4	2	4	4	6	4	4													25	32	57
GOIDHOO SCHOOL	C			7	7	11	5	4	13	12	6	11	14	13	11	9	13	13	14	16	9													96	92	188
HITHAADHOO MADHRASA	C							13	24	14	18	11	11	20	15	13	21	12	30	9	11													92	130	222
KAMADHOO SCHOOL	C			5	5	3	8	5	6	1	6	5	3	4	11	4	5	13	5	4	4													44	53	97
KENDHOO SCHOOL	C							15	18	9	15	18	16	11	14	14	11	23	39	43	37													133	150	283
KIHAADHOO SCHOOL	C			5	3	8	10	7	7	1	5	6	8	9	6	6	5	6	1	9	2													57	47	104
KUDARIKILU MADHRASA	C			8	7	6	7	5	6	4	7	8	7	5	7	9	7	9	6	21	11													75	65	140
MAALHOHU MADHRASA	C			6	1	3	3	8	9	5	9	8	10	10	10	5	15	5	6															50	63	113
BAHIYYA PRE-SCHOOL (EYDHAFUSHI)	C			22	23	23	31																										45	54	99	
UMMULGURA SECONDARY SCHOOL (HITHAADHOO)	P																			22	24	22	31	19	22	19	12							82	89	171
THULHAADHOO SPORTS CLUB PRE-SCHOOL	P	22	30	32	27	22	24																										76	81	157	
<b>TOTAL</b>		16	24	33	90	84	86	95	121	160	123	148	160	165	162	185	182	225	203	281	323	320	158	170	123	155	128	122					1883	2143	4026	

G - Government, C - Community, P - Private

ދިވެހިސަރުކާރުގެ ގެޒެޓް ގައި ބަޔާންކޮށްފައިވާ ގޮތުން ލަޞިކާރުގެ ސަރުކާރުގެ ދަށުން ހިންގާ ފަރާތްތަކުގެ ފަރާތުން  
 SCHOOLS' ENROLMENTS IN LHAVIYANI ATOLL BY GRADE AND SEX  
 (MARCH 2001)

SCHOOL	Type	NURS		LKG		UKG		GR. 1		GR. 2		GR. 3		GR. 4		GR. 5		GR. 6		GR. 7		GR. 8		GR. 9		GR. 10		GR. 11		GR. 12		Special		TOTAL		TOTAL	TOTAL
		F	M	F	M	F	M	F	M	F	M	F	M	F	M	F	M	F	M	F	M	F	M	F	M	F	M	F	M	F	M	F	M				
LH. ATHOLHU MADHRASA (KURENDHOO)	G							33	23	20	25	19	25	25	26	27	41	26	42	20	27	22	9	9	13	14	8							215	239	454	
LH. ATHOLHU THAU'LEEMEE MARKAZ (HINNAVARU)	G							52	50	49	55	58	54	50	60	64	55	76	107	111	95	60	54	40	46	64	51							624	627	1251	
MAAFILAAFUSHI SCHOOL	G							1	1	2	4		4	5	1	3	2	2	5															13	17	30	
MADHRASATHUL IFTHITHAAHU (NAIFARU)	G							37	44	47	66	50	62	56	53	78	115	121	78	98	91	61	51	37	43	60	51							645	654	1299	
OLHUVELIFUSHI SCHOOL	C							4	10	11	7	8	8	16	12	7	14	6	11	7	11													59	73	132	
HABASHEE PRE-SCHOOL (KURENDHOO)	C	15	12	13	22	21	14																											49	48	97	
NOORAANEE PRE-SCHOOL (NAIFARU)	C	29	30	26	29	32	25																											87	84	171	
ROASHANEE PRE-SCHOOL (NAIFARU)	C	14	9	12	17	15	11																											41	37	78	
EASY PRE-SCHOOL (HINNAVARU)	P	5	6	13	19	21	20																											39	45	84	
HUSSAIN GASIM PRE-SCHOOL (HINNAVARU)	P	3	11	8	3	3	5																											14	19	33	
FANNU PRE-SCHOOL (HINNAVARU)	P	14	14	5	12	4	11																											23	37	60	
<b>TOTAL</b>		11		80	82	77	102	96	86	127	128	129	157	135	153	152	152	179	227	231	243	236	224	143	114	86	102	138	110					1809	1880	3689	

G - Government, C - Community, P - Private

ދިވެހިސަރުކާރުގެ ގެޒެޓްގައި ބަޔާންކުރި ސަރުކާރުގެ ފަރާތުން ބޭނުންކުރާ ފަރާތްތަކުގެ ތެރެއިން  
 SCHOOLS' ENROLMENTS IN KAAFU ATOLL BY GRADE AND SEX  
 (MARCH 2001)

SCHOOL	Type	NURS		LKG		UKG		GR. 1		GR. 2		GR. 3		GR. 4		GR. 5		GR. 6		GR. 7		GR. 8		GR. 9		GR. 10		GR. 11		GR. 12		Special		TOTAL		TOTAL	TOTAL
		F	M	F	M	F	M	F	M	F	M	F	M	F	M	F	M	F	M	F	M	F	M	F	M	F	M	F	M	F	M	F	M				
K. ATHOLHU MADHRASA (KAASHIDHOO)	G							16	29	30	26	30	31	31	32	29	31	45	51	29	47	32	30	14	9	8	16								264	302	566
K. ATHOLHU THAU'LEEMEE MARKAZ (THULUSDHOO)	G							11	12	4	14	14	9	11	15	11	13	15	26	20	14	11	10	7	9	10	3								114	125	239
THAU'LEEMAAI MASAIYKAIY UGAN'NAIDHEY KUDAKUDHINGE MARUKAZ (MAAFUSHI)	G								13		4			6		7		4																		34	34
DHIFUSHI SCHOOL	C	23	18					19	19	10	9	20	18	15	18	19	16	21	24	17	14	9	7												153	143	296
GAAFARU MADHRASA	C			18	16	10	9	14	12	14	14	11	8	14	19	12	31	24	26	34	11														151	146	297
GULHEE MADHRASA	C	9	9	6	12	6	5	4	17	8	11	6	13	12	8	14	21	19	13	29	24														113	133	246
GURAIIDHOO MADHRASA	C	19	17	15	19	12	21	9	17	18	21	10	21	9	34	27	29	27	22	27	34														173	235	408
HIMMAFUSHEE SCHOOL	C			13	14	13	16	14	9	12	19	9	13	8	16	9	31	20	23	16	11														114	152	266
HURAA MADHRASA	C	11	4	11	8	5	7	7	7	8	10	4	9	10	13	14	11	15	20	16	20	7	17	4	5	2	4								114	135	249
MAAFUSHI MADHRASA	C							21	20	18	17	19	18	19	24	39	33	29	59	20	26	19	10	9	8										193	215	408
MAVAHI - THUTHUKUDHINGE THAU'LEEMDHEY CLASS (KAASHIDHOO)	P	6	8	6	7	5	7																												17	22	39
THULUSDHOO PRE-SCHOOL	P	10	11	11	9	8	11																												29	31	60
<b>TOTAL</b>		12	78	67	80	85	59	76	115	155	122	145	123	146	129	186	174	220	215	264	208	201	78	74	34	31	20	23						1435	1673	3108	

G - Government, C - Community, P - Private



ދިވެހިސަރުކާރުގެ ގެޒެޓް ގައި ބަޔާންކުރި ޖަދުވަލު 10  
 SCHOOLS' ENROLMENTS IN ALIFU DHAALU ATOLL BY GRADE AND SEX  
 (MARCH 2001)

SCHOOL	Type	NURS		LKG		UKG		GR. 1		GR. 2		GR. 3		GR. 4		GR. 5		GR. 6		GR. 7		GR. 8		GR. 9		GR. 10		GR. 11		GR. 12		Special		TOTAL	TOTAL	TOTAL
		F	M	F	M	F	M	F	M	F	M	F	M	F	M	F	M	F	M	F	M	F	M	F	M	F	M	F	M	F	M	F	M	F	M	
A.DH. ATHOLHU THAULEEMEE MARKAZ (MAHIBADHOO)	G							22	18	19	25	28	27	27	34	27	38	41	53	70	90	43	52	46	48	33	30							356	415	771
A.DH. ATHOLHU MADHRASA (MAAMIGILI)	G							33	35	17	23	24	29	31	34	36	45	63	69	42	54	37	33	21	22	14	13							318	357	675
DHANGETHEE MADHRASA	C	4	10	6	7	6	3	4	6	5	3	6	7	7	6	12	7	22	27	20	24	5	7	4	5									101	112	213
DHIDHDHOO SCHOOL	C	2	1					3	2	2	2		2			4	1	2	3	4														15	13	28
DHIGURASHU MADHRASA	C							4	6	6	4	3	8	2	10	11	6	10	15	6	11													42	60	102
FENFUSHI MADHRASA	C							6	13	7	12	17	10	11	13	12	9	9	26	13	16													75	99	174
HANGNAAMEEDHOO MADHRASA	C							8	8	9	11	11	13	10	7	12	13	12	17	15	12													77	81	158
KUNBURUDHOO SCHOOL	C							6	6	6	3	8	9	5	9	6	7	15	12	13	13													59	59	118
MAHIBADHOO SCHOOL	C	8	13	26	34	20	17																											54	64	118
MANDHOO SCHOOL	C							3	4	3	2	6	5	4	7	4	4	2	8	4	6													26	36	62
OMADHOO MADHRASA	C	12	7	8	13	13	6	12	11	7	13	9	11	14	20	15	18	9	14	12	9													111	122	233
HANGNAAMEEDHOO PRE-SCHOOL	P	6	15	9	14	10	5																											25	34	59
<b>TOTAL</b>		12	32	46	49	68	49	31	101	109	81	98	112	121	111	140	139	147	184	243	198	239	85	92	71	75	47	43					1259	1452	2711	

G - Government, C - Community, P - Private

ދިވެހިސަރުކާރުގެ ގެޒެޓް ގައި ބަޔާންކޮށްފައިވާ ގޮތުން  
 SCHOOLS' ENROLMENTS IN VAAVU ATOLL BY GRADE AND SEX  
 (MARCH 2001)

SCHOOL	Type	NURS		LKG		UKG		GR. 1		GR. 2		GR. 3		GR. 4		GR. 5		GR. 6		GR. 7		GR. 8		GR. 9		GR. 10		GR. 11		GR. 12		Special		TOTAL	TOTAL	TOTAL		
		F	M	F	M	F	M	F	M	F	M	F	M	F	M	F	M	F	M	F	M	F	M	F	M	F	M	F	M	F	M	F	M	F	M			
V. ATHOLHU MADHRASA (FULIDHOO)	G							6	3	8	6	4	6	5	9	7	10	5	8	6	11	5	6	1	9										47	68	115	
V. ATHOLHU THAULEEMEE MARKAZ (FELIDHOO)	G							4	8	4	9	5	6	5	7	10	8	9	11	13	12	6	10	14	13	15	7									85	91	176
KEYODHOO SCHOOL	C	5	5	7	7	4	8	5	8	6	6	16	6	9	12	7	18	16	19	19	20	9	13	6	5											109	127	236
RAKEEDHOO SCHOOL	C			6		4	2	4	2	3	2	1	3	6	9	6	3	7	6	4	6															41	33	74
THINADHOO MADHRASA	C		2			4	1	1	1	1	5	1	1	3	1	2	2	2	1																	14	14	28
<b>TOTAL</b>		5	7	13	7	12	11	20	22	22	28	27	22	28	38	32	41	39	45	42	49	20	29	21	27	15	7								296	333	629	

Students who have completed Grade 6 at Thinadhoo Madhrasa have access to Grade 7 at V. Atoll Education Centre  
 G - Government, C - Community, P - Private





ދިވެހިސަރުކާރުގެ ގެޒެޓް ގައި ބަޔާންކޮށްފައިވާ ގޮތުން  
 SCHOOLS' ENROLMENTS IN DHAALU ATOLL BY GRADE AND SEX  
 (MARCH 2001)

SCHOOL	Type	NURS		LKG		UKG		GR. 1		GR. 2		GR. 3		GR. 4		GR. 5		GR. 6		GR. 7		GR. 8		GR. 9		GR. 10		GR. 11		GR. 12		Special		TOTAL	TOTAL	TOTAL		
		F	M	F	M	F	M	F	M	F	M	F	M	F	M	F	M	F	M	F	M	F	M	F	M	F	M	F	M	F	M	F	M	F	M			
DH. ATHOLHU MADHRASA (MEEDHOO)	G							11	22	10	18	17	18	12	20	20	21	12	26	30	29	13	24	12	9	7	11								144	198	342	
DH. ATHOLHU THAU'LEEMEE MARKAZ (KUDAHUVADHOO)	G							12	13	11	19	21	14	16	16	24	29	21	18	33	52	44	42	31	25	23	33								236	261	497	
BAN'DIDHOO MADHRASA	C							13	17	9	12	11	18	9	15	15	11	12	19	32	27														101	119	220	
GEMENDHOO SCHOOL	C	5	4					4	1	9	11	6	10	7	4	5	8	2	7	4	4														42	49	91	
HULHUDHELI SCHOOL	C							12	14	8	14	10	2	10	15	8	14	16	8	14	6															78	73	151
MAAEN'BOODHOO MADHRASA	C							9	10	10	11	9	14	10	16	8	14	19	20	19	19															84	104	188
RIN'BUDHOO SCHOOL	C			4	10	7	7	6	4	5	5	12	13	8	5	5	9	9	7	8	4														64	64	128	
VAAANEE SCHOOL	C							5	6	6	5	8	7	8	4	10	8	9	11	15	14															61	55	116
KUDAHUVADHOO PRE-SCHOOL	P	46	30																																46	30	76	
<b>TOTAL</b>		9		51	34	4	10	7	7	72	87	68	95	94	96	80	95	95	114	100	116	155	155	57	66	43	34	30	44						856	953	1809	

G - Government, C - Community, P - Private

ދިވެހިސަރުކާރުގެ ގެޒެޓް ގައި ބަޔާންކުރި ގަވާއިދުގެ ދަށުން  
SCHOOLS' ENROLMENTS IN THAA ATOLL BY GRADE AND SEX  
(MARCH 2001)

SCHOOL	Type	NURS		LKG		UKG		GR. 1		GR. 2		GR. 3		GR. 4		GR. 5		GR. 6		GR. 7		GR. 8		GR. 9		GR. 10		GR. 11		GR. 12		Special		TOTAL	TOTAL	TOTAL	
		F	M	F	M	F	M	F	M	F	M	F	M	F	M	F	M	F	M	F	M	F	M	F	M	F	M	F	M	F	M	F	M	F	M		
TH. ATHOLHU MADHRASA (GURAIIDHOO)	G							18	16	19	20	18	25	26	18	31	33	26	31	75	63	43	37	19	19	30	14							305	276	581	
TH. ATHOLHU THAU'LEEMEE MARKAZ (THIMARAFUSHI)	G							26	31	24	28	23	32	30	28	23	40	37	50	38	74	37	56	24	49	30	29							292	417	709	
KIN'BIDHOO SCHOOL	G							7	20	16	12	15	13	18	14	14	10	17	18	40	46	25	10	24	15									176	158	334	
BURUNEE MADHRASA	C							3	1	6	6	7	9	5	3	15	8	11	8	16	11													63	46	109	
DHIYAMIGLI MADHRASA	C			5	6	9	6	4	9	8	17	5	7	8	12	17	8	6	14	18	18													80	97	177	
GAADHIFUSHI MADHRASA	C							3	6	8	10	9	6	10	8	13	16	11	6	11	7													65	59	124	
HIRILANDHOO SCHOOL	C			10	19	20	8	10	12	7	19	12	15	13	10	16	15	22	18	18	17													128	133	261	
KAN'DOODHOO MADHRASA	C							10	7	6	8	6	9	7	12	7	7	11	7	10	14													57	64	121	
MADHRASATHUL JIHAADHU (VILUFUSHI)	C							20	16	12	15	21	17	14	19	20	36	28	38	51	58	53	33	17	10									236	242	478	
MADIFUSHI MADHRASA	C							6	13	7	9	16	17	19	19	15	6	19	18	21	13														103	95	198
OMADHOO MADHRASA	C	8	9					7	10	8	12	3	8	6	6	10	6	12	11	11	11													65	73	138	
VANDHOO MADHRASA	C	7	7					5	6	5	4	5	7	6	9	3	5	5	2	6	3													42	43	85	
VEYMANDOO MADHRASA	C	4	9	17	12	17	13	13	13	6	9	6	8	9	14	18	16	22	18	45	39													157	151	308	
GURAIIDHOO PRE-SCHOOL	C	14	10	17	19	15	12																											46	41	87	
VILU - THUTHUKUDHINGE THAU'LEEMDHEY CLASS (VILUFUSHI)	P	18	18	15	19	18	21																											51	58	109	
KIN'BIDHOO PRE-SCHOOL	P	10	18	15	9	9	15																											34	42	76	
GADHAHAMAADHI PRE-SCHOOL (THIMARAFUSHI)	P	13	18	15	14	7	16																											35	48	83	
<b>TOTAL</b>		17	74	89	94	98	95	91	132	160	132	169	146	173	171	172	202	206	227	239	360	374	158	136	84	93	60	43					1935	2043	3978		

G - Government, C - Community, P - Private





ދިވެހިރާއްޖޭގެ ޖުމްހޫރިއްޔާ ގުޅިގެން ދިވެހިރާއްޖޭގެ ސަރުކާރުގެ ދާއިރާއިން ހިންގާ ފަރާތްތަކުގެ ދަށުން ހިންގާ ފަރާތްތަކުގެ ދަށުން  
 SCHOOLS' ENROLMENTS IN GAAFU DHAALU ATOLL BY GRADE AND SEX  
 (MARCH 2001)

SCHOOL	Type	NURS		LKG		UKG		GR. 1		GR. 2		GR. 3		GR. 4		GR. 5		GR. 6		GR. 7		GR. 8		GR. 9		GR. 10		GR. 11		GR. 12		Special		TOTAL	TOTAL	TOTAL	
		F	M	F	M	F	M	F	M	F	M	F	M	F	M	F	M	F	M	F	M	F	M	F	M	F	M	F	M	F	M	F	M	F	M		
G.DH. ATHOLHU MADHRASA (GADHDHOO)	G							33	30	35	29	27	33	35	28	38	42	51	68	53	56	24	44	11	15	18	4							325	349	674	
G.DH. ATHOLHU THAULEEMEE MARKAZ (THINADHOO)	G							76	79	76	61	92	72	91	73	108	133	118	132	165	196	131	101	101	86	81	53							1039	986	2025	
FARES SCHOOL	C							9	10	12	9	8	14	13	12	9	13	9	13	7	16													67	87	154	
FIYOAREE SCHOOL	C							20	18	14	17	22	20	27	27	12	14	20	22	14	11														129	129	258
HOADEDHOO SCHOOL	C			8	8	9	5	11	13	7	6	16	17	3	12	17	15	9	11	4	2													84	89	173	
JAMAALUDHDHEEN MADHRASA (VAADHOO)	C							14	9	18	18	17	13	19	18	21	27	21	17	16	12														126	114	240
MAATHODAA SCHOOL	C							14	12	14	13	14	14	12	18	14	17	15	18	13	12														96	104	200
MADAVELI SCHOOL	C							25	21	19	10	12	17	16	23	25	22	22	33	31	28														150	154	304
NADALLA SCHOOL	C							9	9	13	12	17	17	15	20	7	28	12	10	11	9														84	105	189
RATHAFANDHOO SCHOOL	C							16	14	11	6	13	19	10	11	12	22	14	10	2	2														78	84	162
AMEER IBRAHIM PRE-SCHOOL (THINADHOO)	P	32	27	23	22	32	25																											87	74	161	
RAULA PRE-SCHOOL (THINADHOO)	P	14	17	19	12	21	25																											54	54	108	
M.M. PRE-SCHOOL (THINADHOO)	P	3	4	6	6	3	4																											12	14	26	
SOUTH HUVADHOO PRIMARY SCHOOL (THINADHOO)	P													1	3	4	5	17	5	22	22	24	14	12	10								80	59	139		
NURSERY AND TUTORIAL SCHOOL (THINADHOO)	P	16	9	10	13	8	20																											34	42	76	
SAPPHIRE - THUTHUKUDHINGE THAULEEMDHEY CLASS (NADALLA)	P	7	7	7	5	6	6																											20	18	38	
ULOOMIYYA PRE-SCHOOL (THINADHOO)	P	14	21	14	16	14	13																											42	50	92	
TODDLER'S PRE-SCHOOL	P	6	3	10	10	14	13																											30	26	56	
AL-RAYYAAN PRE SCHOOL (VAADHOO)	P	8	4	9	12	9	15																											26	31	57	
MAAIRA PRE-SCHOOL (FARES)	P	8	4	11	7	3	11																											22	22	44	
ALIKILEGEFAANU MEMORAIL PRE-SCHOOL (FIYOAREE)	P	17	5	10	7	10	7																											37	19	56	
ROASHANEE NURSERY CLASS (RATHAFANDHOO)	P			3	5	4	13																											7	18	25	
MASAAFAA PRE-SCHOOL (GADHDHOO)	P	4	1	12	11	17	12																											33	24	57	
AMHA-THUTHTHUKUDHINGE THAULEEMU DHEY CLASS (MADAVELI)	P	4	9	7	4	8	6																											19	19	38	
<b>TOTAL</b>		24	133	111	149	138	158	175	227	215	219	181	238	236	241	242	264	336	295	339	333	349	177	167	136	115	111	67						2681	2671	5352	

G - Government, C - Community, P - Private



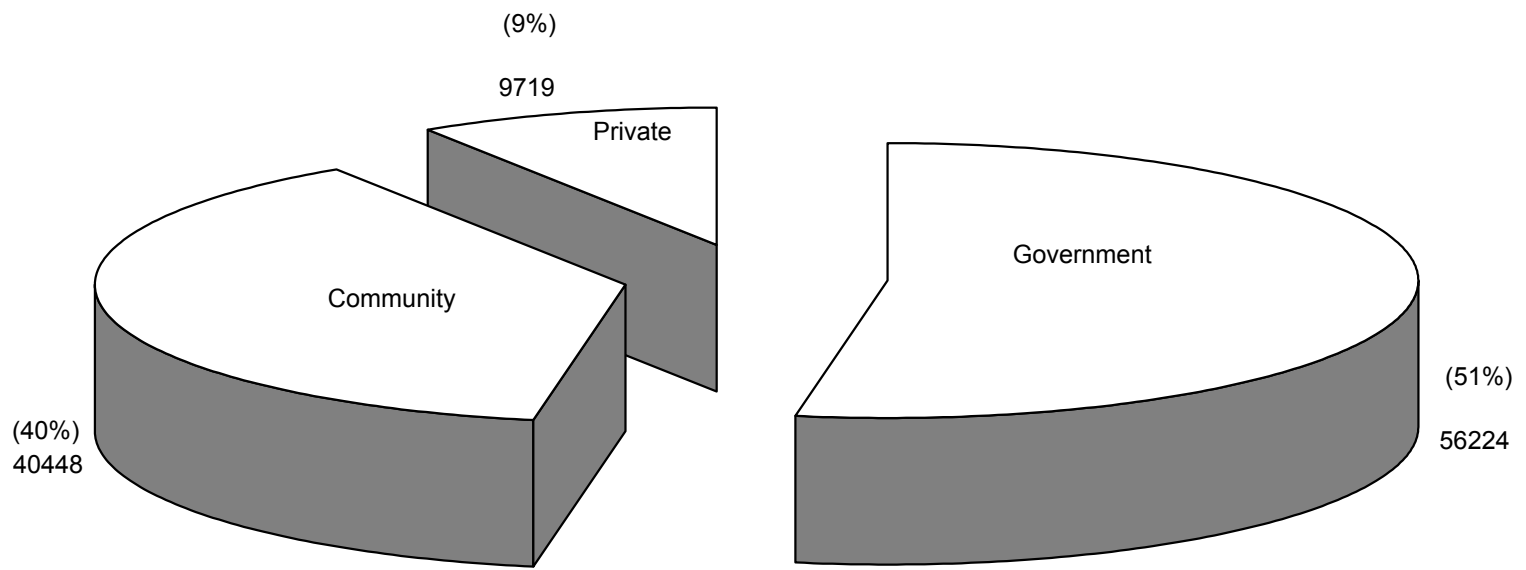
ދިވެހިސަރުކާރުގެ ގެޒެޓް ގައި ބަޔާންކުރި ގޮތުގައި  
 SCHOOLS' ENROLMENTS IN SEENU ATOLL BY GRADE AND SEX  
 (MARCH 2001)

SCHOOL	Type	NURS		LKG		UKG		GR. 1		GR. 2		GR. 3		GR. 4		GR. 5		GR. 6		GR. 7		GR. 8		GR. 9		GR. 10		GR. 11		GR. 12		Special		TOTAL	TOTAL	TOTAL			
		F	M	F	M	F	M	F	M	F	M	F	M	F	M	F	M	F	M	F	M	F	M	F	M	F	M	F	M	F	M	F	M	F	M				
S. ATHOLHU MADHRASA (HULHUDHOO/MEEDHOO)	G																	75	103	65	92	40	26	55	39	50	33								285	293	578		
S. ATHOLHU THAU'LEEMEE MARKAZ (HITHADHOO)	G							78	72	77	70	75	77	54	52	87	85	99	105	122	97															592	558	1150	
FEYDHOO SCHOOL	G							28	59	43	42	33	58	42	53	57	64	56	48	94	99	55	34	30	33										438	490	928		
HITHADHOO SCHOOL	G							75	63	69	66	74	67	71	74	82	80	60	79	130	150															561	579	1140	
IRUSHADHIYYA SCHOOL (MARADHOO-MARADHOO FEYDHOO)	G													21	39	37	33	53	70	97	97	28	35	27	21										263	295	558		
MUHIBUDDIN SCHOOL (HITHADHOO)	G																			103	101	148	113	223	160	153	110									627	484	1111	
SHAMSUDHDHEEN SCHOOL (MEEDHOO)	G							23	25	24	26	20	33	28	26	20	14																			115	124	239	
HULHUDHOO SCHOOL	G							15	16	18	26	17	10	19	27	11	16																			80	95	175	
AL-MADHRASATHUL ISLAAMIYYA (HITHADHOO)	G							9	15	4	22	7	11	3	14	5	8	8	14	6	8	18	10	12	11	7	1									79	114	193	
MARADHOO SCHOOL	C	13	22	31	26	38	18	29	32	33	46	37	37																						181	181	362		
MARADHOO-FEYDHOO SCHOOL	C			15	14	12	18	15	17	14	13	13	19	18	19	13	5																			100	105	205	
ASRIYYAA - THUTHUKUDHINGE THAULEEMDHEY CLASS (MEEDHOO)	P	5	1	3	3																															8	4	12	
HIDHAAYAA - THUTHUKUDHINGE THAULEEMDHEY CLASS (HITHADHOO)	P	3	2	1		3	1																													7	3	10	
MEDHIVALU SCHOOL (HITHADHOO)	P	48	43	64	68	93	82																													205	193	398	
NOORAANEE SCHOOL (HITHADHOO)	P	23	27	43	31	39	35	22	15	9	13	11	17	17	19	14	14	17	14	19	17															214	202	416	
ADDU COMPREHENSIVE SCHOOL (HITHADHOO)	P																			4	5	20	30	45	23	37	18									106	76	182	
SAEEDIYYA PRE-SCHOOL (HITHADHOO)	P	21	32	31	27	30	27																													82	86	168	
KUDHIMAA PRE-SCHOOL (FEYDHOO)	P	21	27	18	24	15	20																													54	71	125	
SHAREEFEE PRE-SCHOOL (MEEDHOO)	P	5	8	26	17	23	27																													54	52	106	
NASRIYYA PRE-SCHOOL (HULHUDHOO)	P	12	18	21	19	18	25																														51	62	113
<b>TOTAL</b>		20		151	180	253	229	271	253	294	314	291	324	287	329	273	323	326	319	368	433	640	666	309	248	392	287	247	162							4102	4067	8169	

G - Government, C - Community, P - Private



ಸರ್ಕಾರಿ ಶಾಲೆಗಳಲ್ಲಿ, ಸರ್ಕಾರಿ ಶಾಲೆಗಳಲ್ಲಿ, ಸರ್ಕಾರಿ ಶಾಲೆಗಳಲ್ಲಿ  
DISTRIBUTION OF ENROLMENT BY TYPE OF SCHOOLS  
(MARCH 2001)



بازرسی و بررسی آماری مدارس و مراکز آموزشی

FREQUENCY DISTRIBUTION OF SCHOOLS BY SIZE OF ENROLMENT  
(MARCH 2001)

Enrolment Category	No. of schools	Percentage	Cummulative total	Cummulative Percentage
Schools with 100 or less students	87	27.71	87	27.71
Schools with 101 - 200 students	90	28.66	177	56.37
Schools with 201 - 300 students	40	12.74	217	69.11
Schools with 301 - 400 students	24	7.64	241	76.75
Schools with 401 - 500 students	14	4.46	255	81.21
Schools with 501 - 600 students	12	3.82	267	85.03
Schools with 601 - 700 students	8	2.55	275	87.58
Schools with 701 - 800 students	7	2.23	282	89.81
Schools with 801 - 900 students	4	1.27	286	91.08
Schools with 901 - 1000 students	2	0.64	288	91.72
Schools with 1001 - 1100 students	2	0.64	290	92.36
Schools with 1101 - 1200 students	6	1.91	296	94.27
Schools with 1201 - 1300 students	3	0.96	299	95.22
Schools with 1301 - 1400 students	2	0.64	301	95.86
Schools with 1401 - 1500 students	1	0.32	302	96.18
Schools with 1501 - 1600 students	2	0.64	304	96.82
Schools with 1601 - 1700 students	0	0.00	304	96.82
Schools with 1701 - 1800 students	1	0.32	305	97.13
Schools with 1801 - 1900 students	1	0.32	306	97.45
Schools with 1901 - 2000 students	2	0.64	308	98.09
Schools with 2001 - 2100 students	2	0.64	310	98.73
Schools with 2101 - 2200 students	0	0.00	310	98.73
Schools with 2201 - 2300 students	1	0.32	311	99.04
Schools with 2301 - 2400 students	0	0.00	311	99.04
Schools with 2401 - 2500 students	1	0.32	312	99.36
Schools with 2501 - 2600 students	1	0.32	313	99.68
Schools with 2601 - 2700 students	0	0.00	313	99.68
Schools with 2701 - 2800 students	0	0.00	313	99.68
Schools with 2801 - 2900 students	0	0.00	313	99.68
Schools with 2901 - 3000 students	0	0.00	313	99.68
Schools with 3001 - 3100 students	1	0.32	314	100.00
Schools with 3101 - 3200 students	0	0.00	314	100.00
Schools with 3201 - 3300 students	0	0.00	314	100.00
Schools with 3301 - 3400 students	0	0.00	314	100.00
Schools with 3401 - 3500 students	0	0.00	314	100.00
Schools with 3501 or more students	0	0.00	314	100.00
<b>TOTAL</b>	<b>314</b>	<b>100.00</b>		



(ސަލާމަތުގެ ސަބަބުން ބަންދުވި ދަރިވަރުންގެ ތަޢުލީމުގެ ފުރުޞަތު ފޯމިއުލޭޝަން)

NUMBER OF GOVERNMENT SCHOOLS AND THEIR ENROLMENTS BY REGION AND LEVEL  
(MARCH 2001)

**GOVERNMENT SCHOOLS**

Atoll	Pre-Primary Enrolment				Primary Enrolment				Lower Secondary Enrolment				Higher Secondary Enrolment			
	No.	Female	Male	Total	No.	Female	Male	Total	No.	Female	Male	Total	No.	Female	Male	Total
Haa Alifu					3	835	888	1723	2	294	285	579				
Haa Dhaalu					3	1391	1488	2879	2	462	339	801				
Shaviyani					2	655	668	1323	2	247	268	515				
Noonu					3	675	744	1419	3	354	313	667				
Raa					3	802	863	1665	3	192	194	386				
Baa					3	674	811	1485	3	349	382	731				
Lhaviyani					4	1130	1211	2341	3	367	326	693				
Kaafu					3	296	384	680	2	82	77	159				
Alifu Alifu					2	177	217	394	2	68	57	125				
Alifu Dhaalu					2	480	574	1054	2	194	198	392				
Vaavu					2	91	114	205	2	41	45	86				
Meemu					2	224	238	462	2	113	105	218				
Faafu					2	328	327	655	2	125	125	250				
Dhaalu					2	250	315	565	2	130	144	274				
Thaa					3	541	622	1163	3	232	229	461				
Laamu					4	696	802	1498	4	435	407	842				
Gaafu Alifu					2	438	539	977	2	268	220	488				
Gaafu Dhaalu					2	998	1032	2030	2	366	303	669				
Gnaviyani					3	1067	1178	2245	1	362	235	597				
Seenu					7	2194	2406	4600	5	846	626	1472				
Male'					9	5045	5399	10444	4	2615	2513	5128	2	330	494	824
<b>TOTAL</b>					<b>66</b>	<b>18987</b>	<b>20820</b>	<b>39807</b>	<b>53</b>	<b>8142</b>	<b>7391</b>	<b>15533</b>	<b>2</b>	<b>330</b>	<b>494</b>	<b>824</b>

ދިވެހިރާއްޖޭގެ ސަރުކާރުގެ ގެޒެޓް (ސަބަބުގެ ތެރެއިން)

NUMBER OF COMMUNITY SCHOOLS AND THEIR ENROLMENTS BY REGION AND LEVEL  
(MARCH 2001)

COMMUNITY SCHOOLS

Atoll	Pre-Primary Enrolment				Primary Enrolment				Lower Secondary Enrolment				Higher Secondary Enrolment			
	No.	Female	Male	Total	No.	Female	Male	Total	No.	Female	Male	Total	No.	Female	Male	Total
Haa Alifu	10	237	242	479	13	1416	1451	2867	2	82	99	181				
Haa Dhaalu	12	362	380	742	14	1263	1277	2540								
Shaviyani	2	50	64	114	13	1002	1027	2029	2	67	70	137				
Noonu	2	80	75	155	11	975	986	1961								
Raa	5	106	90	196	12	1556	1685	3241	4	147	155	302				
Baa	8	124	131	255	10	578	649	1227								
Lhaviyani	1	177	169	346	1	59	73	132								
Kaafu	6	171	175	346	7	790	933	1723	3	50	51	101				
Alifu Alifu	1	16	18	34	6	457	490	947								
Alifu Dhaalu	5	105	111	216	8	446	523	969	1	9	12	21				
Vaavu	3	30	25	55	3	119	131	250	1	15	18	33				
Meemu	4	60	79	139	7	449	475	924	2	111	116	227				
Faafu	2	36	28	64	3	234	279	513	1	8	13	21				
Dhaalu	2	16	21	37	6	414	443	857								
Thaa	6	143	130	273	10	829	871	1700	1	70	43	113				
Laamu	6	133	154	287	12	1046	1176	2222								
Gaafu Alifu					8	698	702	1400	1	47	29	76				
Gaafu Dhaalu	1	17	13	30	8	797	853	1650								
Gnaviyani																
Seenu	2	109	98	207	2	172	188	360								
Male'	4	1866	1828	3694	4	1321	1020	2341	4	901	813	1714				
<b>TOTAL</b>	<b>82</b>	<b>3838</b>	<b>3831</b>	<b>7669</b>	<b>158</b>	<b>14621</b>	<b>15232</b>	<b>29853</b>	<b>22</b>	<b>1507</b>	<b>1419</b>	<b>2926</b>				



ސަރުކާރުގެ ސަލާމަތުގެ ޖަނަވާރު (ސަލާމަތުގެ ޖަނަވާރު)

NUMBER OF SCHOOLS AND ENROLMENT BY REGION AND LEVEL  
(MARCH 2001)

**GOVERNMENT, COMMUNITY AND PRIVATE SCHOOLS**

Atoll	Pre-Primary Enrolment				Primary Enrolment				Lower Secondary Enrolment				Higher Secondary Enrolment			
	No.	Female	Male	Total	No.	Female	Male	Total	No.	Female	Male	Total	No.	Female	Male	Total
Haa Alifu	16	405	412	817	16	2251	2339	4590	4	376	384	760				
Haa Dhaalu	14	445	464	909	17	2654	2765	5419	2	462	339	801				
Shaviyani	4	77	92	169	16	1745	1783	3528	5	354	372	726				
Noonu	6	177	181	358	14	1650	1730	3380	3	354	313	667				
Raa	8	214	218	432	15	2358	2548	4906	7	339	349	688				
Baa	9	200	212	412	13	1274	1484	2758	4	409	447	856				
Lhaviyani	6	253	270	523	5	1189	1284	2473	3	367	326	693				
Kaafu	8	217	228	445	10	1086	1317	2403	5	132	128	260				
Alifu Alifu	5	76	85	161	8	634	707	1341	2	68	57	125				
Alifu Dhaalu	5	130	145	275	10	926	1097	2023	3	203	210	413				
Vaavu	3	30	25	55	5	210	245	455	3	56	63	119				
Meemu	4	60	79	139	9	673	713	1386	4	224	221	445				
Faafu	2	36	28	64	5	562	606	1168	3	133	138	271				
Dhaalu	3	62	51	113	8	664	758	1422	2	130	144	274				
Thaa	9	263	278	541	13	1370	1493	2863	4	302	272	574				
Laamu	7	149	175	324	16	1742	1978	3720	4	435	407	842				
Gaafu Alifu	4	115	130	245	10	1136	1241	2377	3	315	249	564				
Gaafu Dhaalu	14	440	424	864	11	1817	1898	3715	3	424	349	773				
Gnaviyani	5	210	232	442	4	1070	1183	2253	1	362	235	597				
Seenu	10	675	662	1337	11	2479	2708	5187	6	948	697	1645				
Male'	7	2101	2083	4184	14	6894	6793	13687	11	4975	4576	9551	2	330	494	824
<b>TOTAL</b>	<b>149</b>	<b>6335</b>	<b>6474</b>	<b>12809</b>	<b>230</b>	<b>34384</b>	<b>36670</b>	<b>71054</b>	<b>82</b>	<b>11368</b>	<b>10276</b>	<b>21644</b>	<b>2</b>	<b>330</b>	<b>494</b>	<b>824</b>

ދިވެހިސަރުކާރުގެ ގެޒެޓް ގައި ބަޔާންކޮށްފައިވާ ގޮތުން ދިވެހިރާއްޖޭގެ ސަރުކާރުގެ ގެޒެޓް ގައި ބަޔާންކޮށްފައިވާ ގޮތުން  
 TEACHERS SERVING AT DIFFERENT LEVELS, BY JOB CATEGORIES  
 (March 2001)

	Permanant																Temporary				Total				
	Trained								Untrained								Local		Expat		Local		Expat		Local & Expat
	Graduate				Non-Graduate				Graduate				Non-Graduate				Local	Expat	Local	Expat					
	Local		Expat		Local		Expat		Local		Expat		Local		Expat		Local	Expat	Local	Expat					
F	M	F	M	F	M	F	M	F	M	F	M	F	M	F	M	F	M	F	M	F	M	F	M		
<b>Republic</b>																									
Pre-Primary	-	-	4	6	289	20	5	2	-	-	-	-	83	4	1	-	144	17	-	1	516	41	10	9	576
Primary (Grades 1 - 7)	2	13	166	201	1,032	526	89	83	-	6	18	35	96	88	4	8	505	262	6	15	1,635	895	283	342	3,155
Lower Secondary School (Grades 8 - 10)	22	40	224	480	113	130	34	102	1	18	12	79	4	14	-	4	3	9	-	5	143	211	270	670	1,294
Higher Secondary Schools (Grades 11 - 12)	3	3	22	11	-	-	-	-	-	-	-	-	-	-	-	-	-	-	-	-	3	3	22	11	39
Subtotals by Sex	27	56	416	698	1,434	676	128	187	1	24	30	114	183	106	5	12	652	288	6	21	2,297	1,150	585	1,032	5,064
<b>Male'</b>																									
Pre-Primary	-	-	4	1	150	4	3	2	-	-	-	-	29	-	-	-	-	-	-	-	179	4	7	3	193
Primary (Grades 1 - 7)	1	8	29	30	318	73	60	19	-	-	5	4	11	5	1	1	-	-	-	1	330	86	95	55	566
Lower Secondary School (Grades 8 - 10)	11	18	90	157	65	61	27	75	1	9	-	5	2	-	-	-	-	-	-	-	79	88	117	237	521
Higher Secondary Schools (Grades 11 - 12)	3	3	22	11	-	-	-	-	-	-	-	-	-	-	-	-	-	-	-	-	3	3	22	11	39
Subtotals by Sex	15	29	145	199	533	138	90	96	1	9	5	9	42	5	1	1	-	-	-	1	591	181	241	306	1,319
<b>Atolls</b>																									
Pre-Primary	-	-	-	5	139	16	2	-	-	-	-	-	54	4	1	-	144	17	-	1	337	37	3	6	383
Primary (Grades 1 - 7)	1	5	137	171	714	453	29	64	-	6	13	31	85	83	3	7	505	262	6	14	1,305	809	188	287	2,589
Lower Secondary School (Grades 8 - 10)	11	22	134	323	48	69	7	27	-	9	12	74	2	14	-	4	3	9	-	5	64	123	153	433	773
Higher Secondary Schools (Grades 11 - 12)	-	-	-	-	-	-	-	-	-	-	-	-	-	-	-	-	-	-	-	-	-	-	-	-	-
Subtotals by Sex	12	27	271	499	901	538	38	91	-	15	25	105	141	101	4	11	652	288	6	20	1,706	969	344	726	3,745
Subtotals by Local/Expat.	83		1114		2110		315		25		144		289		17		940		27		3447		1617		
Subtotals by Graduate/Non-graduate	1197				2425				169				306												
Subtotals by Trained/Untrained	3622								475																
Subtotals by Permanent/Temporary	4097																967								
Grand Total	<b>5,064</b>																								

\* This table does not include supervisors, assistant headmasters, headmasters, assistant principals and principals who may teach in addition to their administrative duties. Schools overlap in levels. Overlapping teachers have been enumerated in the level the teacher takes most periods.

ދިވެހިސަރުކާރުގެ ގެޒެޓް ގައި ބަޔާންކޮށްފައިވާ ގޮތުގައި 2001 ވަނަ އަހަރުގެ މާރޗް ގައި ދިވެހިރާއްޖޭގެ ފަރާތްތަކުން ދަނީ ދަތުރުކުރަމުންދާ ސަރަޙައްދުތަކުގައި ދަނީ ދަތުރުކުރަމުންދާ ފަރާތްތަކުގެ ތަން ބަޔާންކޮށްފައިވާ ގޮތުގައި

TEACHERS SERVING IN REGIONS BY JOB CATEGORIES

(March 2001)

Locality	Permanent																Temporary				Total				
	Trained								Untrained																
	Graduate				Non-Graduate				Graduate				Non-Graduate												
	Local		Expat		Local		Expat		Local		Expat		Local		Expat		Local		Expat		Local & Expat				
F	M	F	M	F	M	F	M	F	M	F	M	F	M	F	M	F	M	F	M						
<b>Republic</b>	<b>27</b>	<b>56</b>	<b>416</b>	<b>698</b>	<b>1,434</b>	<b>676</b>	<b>128</b>	<b>187</b>	<b>1</b>	<b>24</b>	<b>30</b>	<b>114</b>	<b>183</b>	<b>106</b>	<b>5</b>	<b>12</b>	<b>652</b>	<b>288</b>	<b>6</b>	<b>21</b>	<b>2,297</b>	<b>1,150</b>	<b>585</b>	<b>1,032</b>	<b>5,064</b>
<b>Male'</b>	<b>15</b>	<b>29</b>	<b>145</b>	<b>199</b>	<b>533</b>	<b>138</b>	<b>90</b>	<b>96</b>	<b>1</b>	<b>9</b>	<b>5</b>	<b>9</b>	<b>42</b>	<b>5</b>	<b>1</b>	<b>1</b>	-	-	-	<b>1</b>	<b>591</b>	<b>181</b>	<b>241</b>	<b>306</b>	<b>1,319</b>
<b>Atolls</b>	<b>12</b>	<b>27</b>	<b>271</b>	<b>499</b>	<b>901</b>	<b>538</b>	<b>38</b>	<b>91</b>	-	<b>15</b>	<b>25</b>	<b>105</b>	<b>141</b>	<b>101</b>	<b>4</b>	<b>11</b>	<b>652</b>	<b>288</b>	<b>6</b>	<b>20</b>	<b>1,706</b>	<b>969</b>	<b>344</b>	<b>726</b>	<b>3,745</b>
Haa Alifu	-	1	21	21	60	46	2	10	-	-	1	3	7	2	-	-	63	22	-	3	130	71	24	37	262
Haa Dhaalu	3	6	31	39	60	30	4	5	-	-	2	3	5	5	3	1	74	29	-	-	142	70	40	48	300
Shaviyani	-	-	7	36	29	54	-	3	-	-	-	8	2	6	-	1	40	21	-	-	71	81	7	48	207
Noonu	-	1	12	25	49	33	1	5	-	-	4	18	9	10	-	2	25	21	-	1	83	65	17	51	216
Raa	-	1	11	36	40	52	-	7	-	1	2	8	12	9	-	1	61	29	-	-	113	92	13	52	270
Baa	3	5	23	36	68	41	1	2	-	2	1	10	1	10	-	-	13	3	-	1	85	61	25	49	220
Lhaviyani	1	1	16	37	58	16	3	3	-	-	-	-	12	5	-	-	48	10	-	-	119	32	19	40	210
Kaafu	-	-	8	16	27	29	6	7	-	-	-	-	10	7	-	-	27	10	-	4	64	46	14	27	151
Alifu Alifu	-	-	7	8	12	13	1	2	-	-	1	2	4	7	-	-	29	9	1	1	45	29	10	13	97
Alifu Dhaalu	1	-	11	14	36	12	3	4	-	2	-	1	3	4	-	4	32	7	-	4	72	25	14	27	138
Vaavu	-	-	-	6	11	3	1	5	-	-	-	-	-	-	-	-	9	4	-	-	20	7	1	11	39
Meemu	-	-	8	21	28	17	-	4	-	-	-	-	2	4	-	-	9	10	-	1	39	31	8	26	104
Faafu	-	-	14	14	12	19	-	4	-	-	-	-	-	2	-	-	14	5	2	1	26	26	16	19	87
Dhaalu	-	-	2	25	23	20	2	3	-	1	1	-	-	-	-	-	12	9	-	-	35	30	5	28	98
Thaa	-	-	4	33	50	20	-	9	-	-	1	5	6	5	-	-	37	24	1	1	93	49	6	48	196
Laamu	-	-	19	30	29	30	9	7	-	-	-	-	10	7	-	-	33	36	1	2	72	73	29	39	213
Gaafu Alifu	-	-	8	14	42	38	-	3	-	-	1	16	6	2	-	1	18	7	-	-	66	47	9	34	156
Gaafu Dhaalu	2	4	26	37	89	30	1	2	-	-	-	1	14	8	1	1	27	7	-	-	132	49	28	41	250
Gnaviyani	-	3	3	10	72	21	-	-	-	-	5	15	6	4	-	-	19	3	1	1	97	31	9	26	163
Seenu	2	5	40	41	106	14	4	6	-	9	6	15	32	4	-	-	62	22	-	-	202	54	50	62	368

This table does not include supervisors, assistant headmasters, headmasters, assistant principals and principals who may teach in addition to their administrative duties.  
This table includes pre-primary teachers

ශ්‍රී ලංකා ප්‍රජාතාන්ත්‍රික සමාජවාදී ජනරජයේ  
 STUDENT TEACHER RATIO OF REGIONS BY LEVEL  
 (March 2001)

Locality	Pre-Primary			Primary			Lower Secondary			Higher Secondary			Total		
	St. Enrol	Tr. Enrol	STR	St. Enrol	Tr. Enrol	STR	St. Enrol	Tr. Enrol	STR	St. Enrol	Tr. Enrol	STR	St. Enrol	Tr. Enrol	STR
<b>Republic</b>	<b>12,809</b>	<b>576</b>	<b>22.24</b>	<b>71,054</b>	<b>3,155</b>	<b>22.52</b>	<b>21,644</b>	<b>1,294</b>	<b>16.73</b>	<b>824</b>	<b>39</b>	<b>21.13</b>	<b>106,331</b>	<b>5064</b>	<b>21.00</b>
<b>Male'</b>	<b>4,184</b>	<b>193</b>	<b>21.68</b>	<b>13,687</b>	<b>566</b>	<b>24.18</b>	<b>9,551</b>	<b>521</b>	<b>18.33</b>	<b>824</b>	<b>39</b>	<b>21.13</b>	<b>28,246</b>	<b>1,319</b>	<b>21.41</b>
<b>Atolls</b>	<b>8,625</b>	<b>383</b>	<b>22.52</b>	<b>57,367</b>	<b>2,589</b>	<b>22.16</b>	<b>12,093</b>	<b>773</b>	<b>15.64</b>	-	-	-	<b>78,085</b>	<b>3745</b>	<b>20.85</b>
Haa Alifu	817	48	17.02	4,590	172	26.69	760	42	18.10	-	-	-	6,167	262	23.54
Haa Dhaalu	909	22	41.32	5,419	231	23.46	801	47	17.04	-	-	-	7,129	300	23.76
Shaviyani	169	5	33.80	3,528	162	21.78	726	40	18.15	-	-	-	4,423	207	21.37
Noonu	358	16	22.38	3,380	153	22.09	667	47	14.19	-	-	-	4,405	216	20.39
Raa	432	11	39.27	4,906	218	22.50	688	41	16.78	-	-	-	6,026	270	22.32
Baa	412	15	27.47	2,758	147	18.76	856	58	14.76	-	-	-	4,026	220	18.30
Lhaviyani	523	42	12.45	2,473	117	21.14	693	51	13.59	-	-	-	3,689	210	17.57
Kaafu	445	19	23.42	2,403	105	22.89	260	27	9.63	-	-	-	3,108	151	20.58
Alifu Alifu	161	10	16.10	1,341	77	17.42	125	10	12.50	-	-	-	1,627	97	16.77
Alifu Dhaalu	275	13	21.15	2,023	100	20.23	413	25	16.52	-	-	-	2,711	138	19.64
Vaavu	55	2	27.50	455	27	16.85	119	10	11.90	-	-	-	629	39	16.13
Meemu	139	7	19.86	1,386	63	22.00	445	34	13.09	-	-	-	1,970	104	18.94
Faafu	64	5	12.80	1,168	59	19.80	271	23	11.78	-	-	-	1,503	87	17.28
Dhaalu	113	15	7.53	1,422	58	24.52	274	25	10.96	-	-	-	1,809	98	18.46
Thaa	541	17	31.82	2,863	145	19.74	574	34	16.88	-	-	-	3,978	196	20.30
Laamu	324	13	24.92	3,720	149	24.97	842	51	16.51	-	-	-	4,886	213	22.94
Gaafu Alifu	245	15	16.33	2,377	107	22.21	564	34	16.59	-	-	-	3,186	156	20.42
Gaafu Dhaalu	864	57	15.16	3,715	135	27.52	773	58	13.33	-	-	-	5,352	250	21.41
Gnaviyani	442	12	36.83	2,253	125	18.02	597	26	22.96	-	-	-	3,292	163	20.20
Seenu	1,337	39	34.28	5,187	239	21.70	1,645	90	18.28	-	-	-	8,169	368	22.20

*This table does not include supervisors, assistant headmasters, headmasters, assistant principals, principals who may teach in addition to their administrative duties. The total enrolment does not include the physically handicapped students.*

STR - Student Teacher Ratio

(ސަންދަންޖުގެ ދަށުން ދިވެހިސަރުކާރުގެ ފަރާތުން ހިންގާ ދަރިވަރުންގެ ދަތުރު)

SCHOOLS, ENROLMENT AND TEACHERS BY REGIONS  
(March 2001)

Locality	Schools		Students (Both Sexes)	Teachers			Student Teacher Ratio (Trained Teachers)
	Enrol <500	Enrol >=500		Total	Trained	Untrained	
<b>Republic</b>	<b>255</b>	<b>59</b>	<b>106,391</b>	<b>5,064</b>	<b>3,622</b>	<b>1,442</b>	<b>29.37</b>
<b>Male'</b>	<b>5</b>	<b>16</b>	<b>28,306</b>	<b>1,319</b>	<b>1,245</b>	<b>74</b>	<b>22.74</b>
<b>Atolls</b>	<b>250</b>	<b>43</b>	<b>78,085</b>	<b>3,745</b>	<b>2,377</b>	<b>1,368</b>	<b>32.85</b>
Haa Alifu	23	3	6,167	262	161	101	38.30
Haa Dhaalu	16	4	7,129	300	178	122	40.05
Shaviyani	15	3	4,423	207	129	78	34.29
Noonu	17	3	4,405	216	126	90	34.96
Raa	13	5	6,026	270	147	123	40.99
Baa	14	2	4,026	220	179	41	22.49
Lhaviyani	9	2	3,689	210	135	75	27.33
Kaafu	11	1	3,108	151	93	58	33.42
Alifu Alifu	12		1,627	97	43	54	37.84
Alifu Dhaalu	10	2	2,711	138	81	57	33.47
Vaavu	5		629	39	26	13	24.19
Meemu	8	1	1,970	104	78	26	25.26
Faafu	4	1	1,503	87	63	24	23.86
Dhaalu	9		1,809	98	75	23	24.12
Thaa	15	2	3,978	196	116	80	34.29
Laamu	14	3	4,886	213	124	89	39.40
Gaafu Alifu	13	1	3,186	156	105	51	30.34
Gaafu Dhaalu	22	2	5,352	250	191	59	28.02
Gnaviyani	6	2	3,292	163	109	54	30.20
Seenu	14	6	8,169	368	218	150	37.47

*This table does not include supervisors, assistant headmasters, headmasters, assistant principals and principals who may teach in addition to their administrative duties.*

*This table includes pre-primary teachers*