



G DH VAADHOO

LOCAL PROFILE & STRATEGIC PLAN

ABSTRACT

This book consists of an island profile and a land use plan done for Gdh Vaadhoo after a site visit conducted from 5th August to 12th August 2017. During the site visit, all aspects of the island were studied within groups. This is part of the design project under the subject architectural design project IV, where it mainly focuses on tourism development. The book contains problems we have identified under certain topics and the strategic plans for the island to solve these highlighted problems.

ACKNOWLEDGEMENT

We would like to thank the people of G.Dh. Vaadhoo for their utmost support and guidance throughout our trip. It was a unique and adventurous trip which broadened our knowledge of one of the greatest histories in Maldives. Moreover, we deeply appreciate our mentors, Ahmed Fariz and Ibrahim Nadheem for their assistance and encouragement. Thank you.





CONTENT

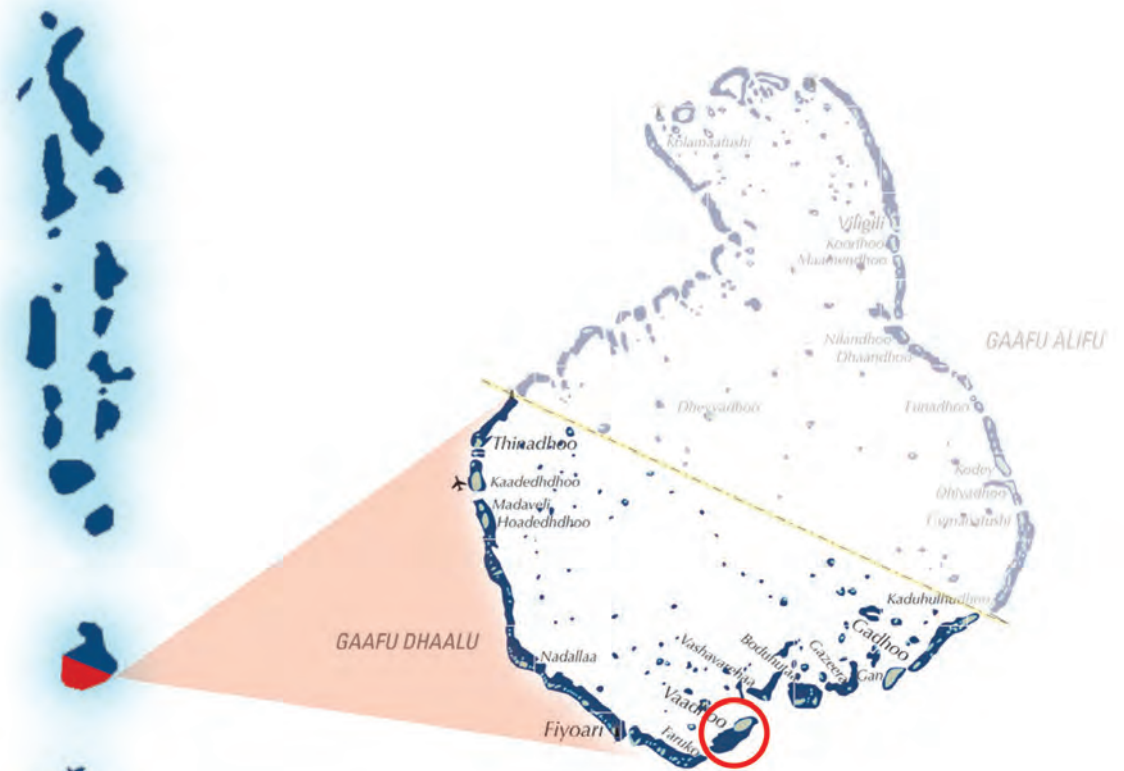
HISTORY	03
LOCAL PROFILE	
01 PHYSICAL FEATURES, NATURAL HERITAGE & NATURAL RESOURCE MANAGEMENT	07
02 POPULATION & HOUSING	13
03 ECONOMY & EMPLOYMENT	17
04 RETAIL & COMMERCE	21
05 TOURISM & VISITORS	25
06 RECREATION & OPEN SPACES	29
07 COMMUNITY FACILITIES	33
08 URBAN DESIGN, CHARACTER & HERITAGE	37
09 TRAFFIC, TRANSPORT & INFRASTRUCTURE	45
PROPOSED STRATEGIES & ACTION PLAN	50
STRATEGIC MAP	61
REFERENCE	65

AT A GLANCE

Gdh. Vaadhoo, an island vast and green was a sight of relief after two or more hours of travelling from Male' to Vaadhoo located in the southern tip of the biggest atoll in Maldives. A long and wearing journey but nevertheless a walk through the island was refreshing. From narrow sandy roads to roads wide as a boulevard, vaadhoo is an island with dense vegetation. A feeling of walking through a magical forest cannot be denied. Filled with stories and legends, this island is the historical pivot of the atoll.

It is instantly noticeable of the keenness and the excitement of the people in the island telling stories about their life and their ancestors. Proud islanders with an immense love for their island. A will and determination is engraved in their hearts to develop the island for a better future.

Vaadhoo is an island filled with potential wherever one look. Starting from the farmlands with rich soil growing fruits and vegetables to the large waves breaking over the reefs for surfing and a dive into the sea to be mesmerized by the colourful fishes and corals surrounding the island. This island is the definition of a good tourist spot.





HISTORY

It is unknown about the origins of Vaadhoo. From where, when or why the people chose to settle in this island might never be discovered. But some of the artifacts left by the ancestors tell us a small portion of the early settlement in Gdh. Vaadhoo. There are stories of where one family might not be aware of another family living in the island due to its vastness and the dense vegetation that most likely restricted the islanders to explore. Grave stones were discovered later on in different sections of the island leading to an understatement that there was a great population in Vaadhoo.

- A sustainable way of living was practiced among the islanders, their means of survival was fishing and agriculture. People in the early days planted varieties of root vegetables and crops. The need to depend on other islanders for survival was extra-neous. For live stocks, chicken was widely used in Vaadhoo.

- Even though fishing was a source of food for the islanders, it was done in a very mediocre level. From early dawn to evening, men go on Dhonis and use pole and line fishing method to catch fishes.

- There were mainly two architectural styles in the early days. Houses were made from the leaves and wood of coconut palms and coral stones. The houses are arranged in such a way that there is a space in between houses wide enough for the islander to carry coffins in such a case.

- People around the Maldives visited Vaadhoo for Maldivian medical treatment or in other words, Dhivehi Beysverikan. It is said that there lived a man with such a talent in Dhivehi beysverikan that he used his own hands to put together a broken and shattered bone in a man's leg.

- Recitation of Quran and the Arabic dialect was mostly what was taught in the island. Vaadhoo was also known as having a great religious teacher known as Mohammed Jamaaluddin, also known as Vaadhoo Dhanna Kaleyfaanu.



The beautiful girls in red – Traditionally when new houses or places are built, women dressed in traditional attires visit with foods and drinks as a form of hospitality. When Aasaraa Mosque was built, beautiful women wearing red traditional attire or also known as 'Dhivehi Libaas' came with food and drinks. However, the islanders knew nothing about these women as they have never seen them before. Some people say that they were supernatural creatures whilst others say that they were people who lived in the island but a far from where they were settled. Either way, these beautiful girls were never seen since that day.



Gala Miskiy – When pregnant women wanted an easy labour, Gala Miskiy was the place where they will be at. Women from nearby islands used to go to Vaadhoo just for this purpose. This is a glamorous spiritual ritual that is taken place when women are in their third trimester. Whether one is getting power from the dead or a magical fairy this ritual was practiced for a very long time in Vaadhoo.



Mohammed Jamaaluddin – The Yemen trained sheik, also known as Mohammed Jamaaluddin or Vaadhoo Dhanna Kaleyfaanu was a religious sheikh and a venerated teacher. It is said that Jamaaluddin came to the support Mohammed Thakurufaanu who defeated the torturous regime of the Portuguese in Maldives. He chose to go to Vaadhoo later on, refusing wealth and power and settled in Vaadhoo as a teacher. Students came from nearby islands to study under his guidance and to seek knowledge. There are not much that is known about this legendary teacher.



The boy who cried: It begins as a boy who was kept outside the house as a punishment in the midst of the dark. His wailing was heard throughout the neighbourhood but no one gave much attention as it is a common form of punishment for kids. When suddenly, the eerie silence caved in and when his parents went to see what happened to their boy, he was long gone. Legend says that the boy was confronted by a supernatural creature, or a 'jinni' in common terms. He was taken for a ride throughout Gdh atoll and Ga atoll. After a long trip throughout the atolls he brought the boy back to the island. Before the jinni left, it took one eye from the boy as a payment.



LOCAL PROFILE

1. PHYSICAL FEATURES, CLIMATE, NATURAL HERITAGE & NATURAL RESOURCE MANAGEMENT



Location

Gdh. Vaadhoo is one of the inhabitant Island located in Southern Huvadhoo Atoll (G.DH. Atoll) 438km from the capital city Male'. The area of the island is approximately 1.63km², length 2.32km and width 1.13km.

Nikagas

From the first glimpse of the vaadhoo one catches sight of an approximately 20m height, 400 years old Banyan tree "Nikagas" (A) located in the north-east side of the island. However, no actions are taken to preserve this tree and most of the islanders are not aware of the importance of this tree.



1B

Blue Bowls

Blue Bowls (B) is the world 7th surf point located at Vaadhoo. It is a favorite stop for surfers from all around the world, not only because it's a long and smooth right hander, but also because anchoring there means an opportunity to meet the local population and spend time in the local village.

Erosion

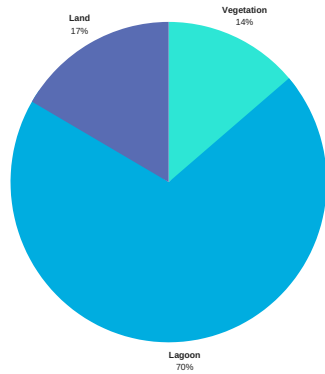
A vast quarter of the beach that, embodies the island is subjected to erosion. The eastern side of the island is highly affected by this problem. Little has been done to tackle the problem.

Levels of Erosion



Geographical Data

The Island is surrounded by a large lagoon area of 829 hectre. The total land area is 198 hectre and 82 percent of land area is covered with vegetation which is 164 hectre. however, the greater percentatge of the lagoon is not used even though it can be used effectively.



Reef

The reef which protects the island from huge waves are damaged due to anchoring. The reef is used mostly by safaris, and other vessels which come to use the surf point (blue bowls.)

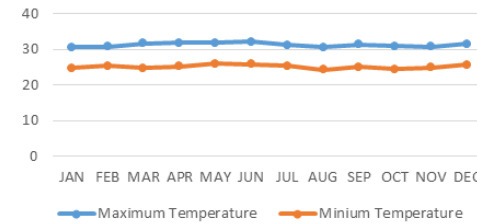


Climate

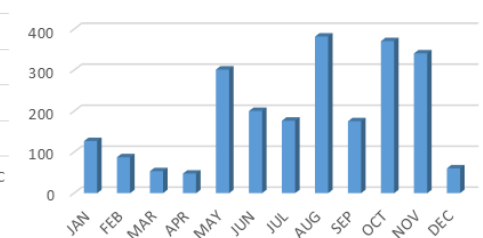
The Maldives experiences a year-round hot tropical climate. There are two monsoons Iruvai and hulhagu. The maximum temperature in Vaadhoo rises up to 32 degree Celsius and minimum temperature is 24.3 degree Celsius. Wind is mostly directed from southwest from May to October and the north east from November to April. Generally the southwest brings more wind in June and July.



AVERAGE DAILY TEMPERATURE



DAILY RAIN FALL (MM)



AVERAGE DAILY MEAN HUMIDITY %

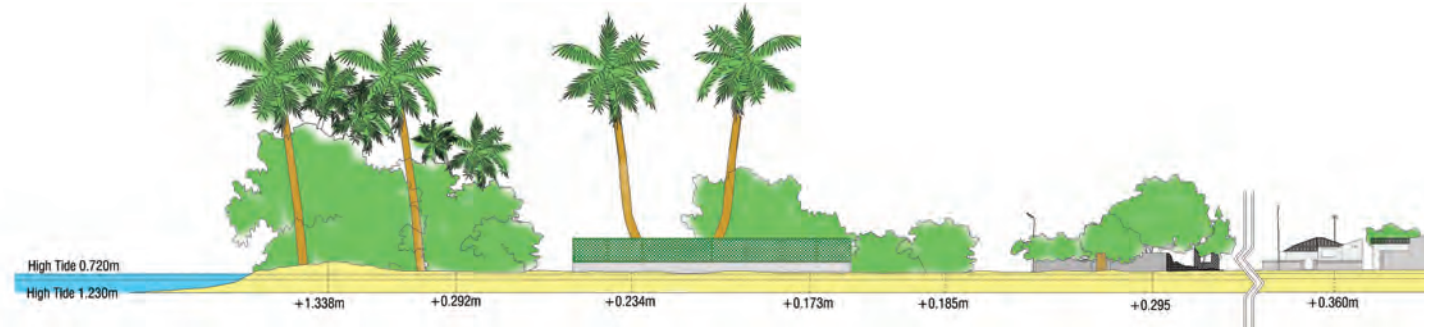


Topography

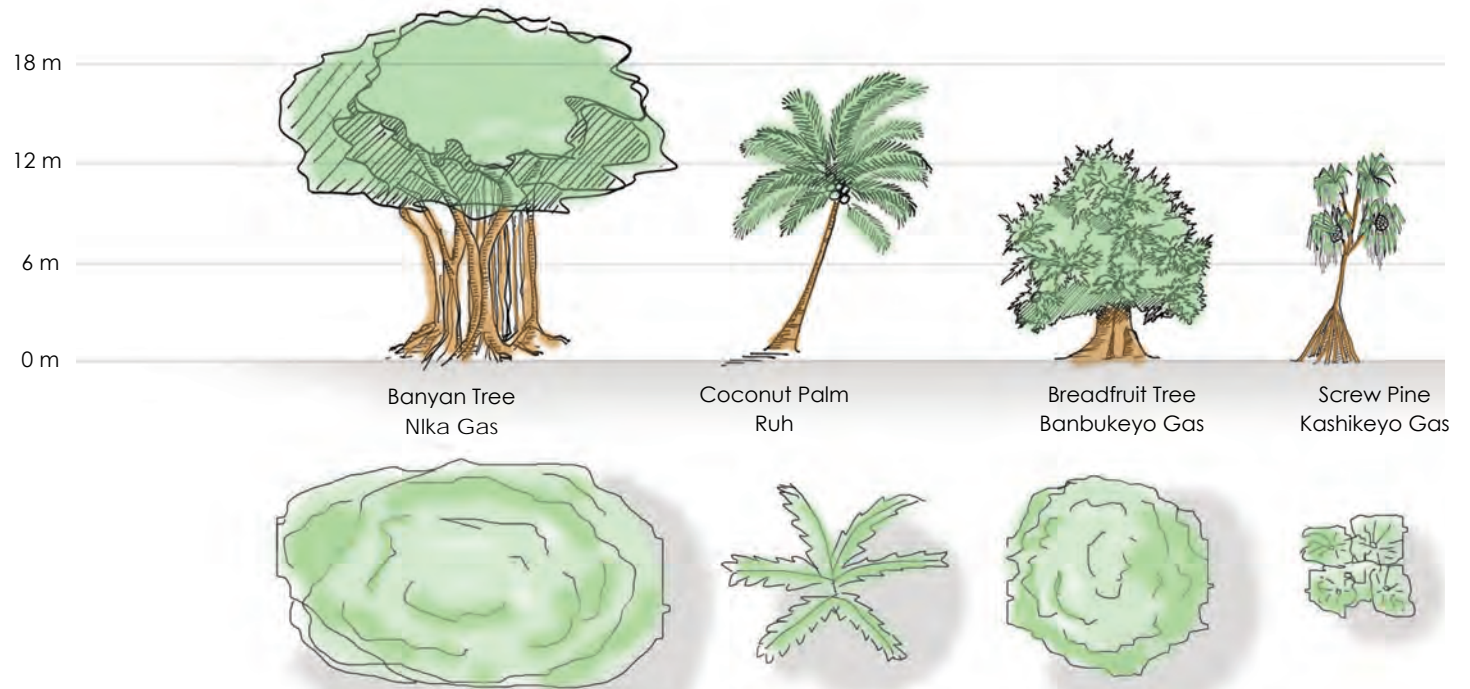
The soil condition is uneven due to muddy topography during rainy seasons. There are no proper drainage system lead to slow draining resulting in puddles during rainy sea-son. The average water table of the Island is shallow, though some areas are deeper.



Topography Section



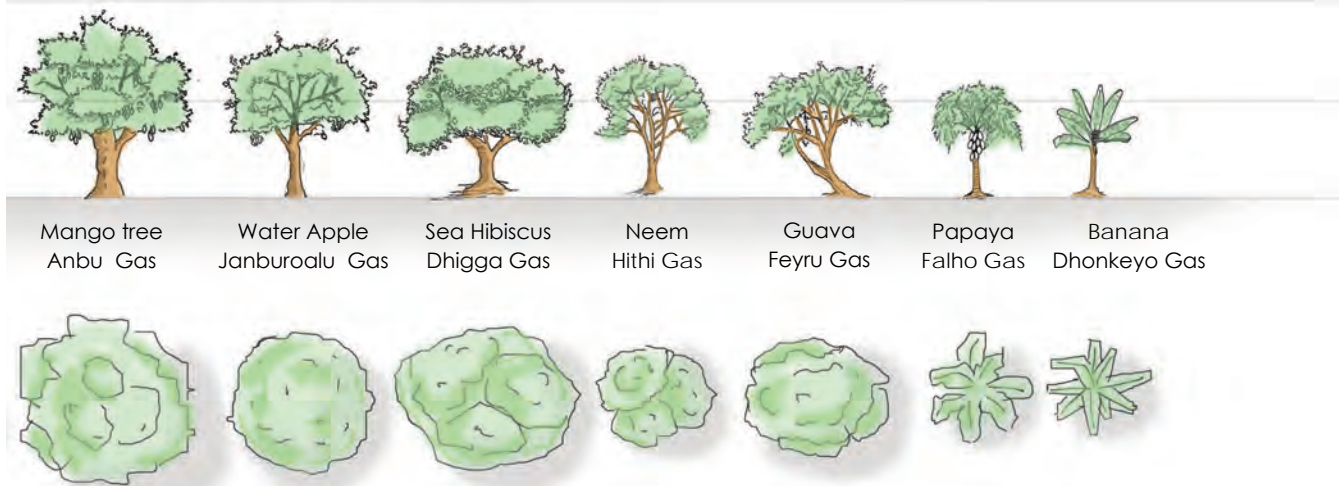
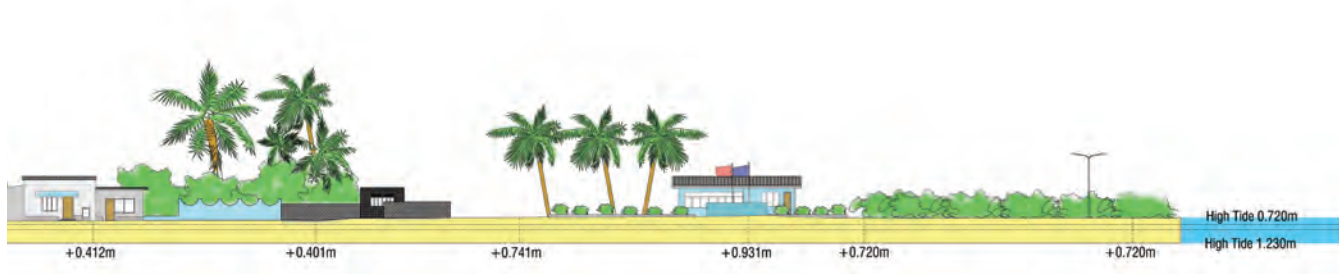
Vegetation Types



Vegetation

The island consists of dense vegetation from mango trees to banyan trees providing food and shade to the islanders.





Natural Resources

Water management : Ground water is use for toi-lets, showering, and other house hold activities. Sub-sequently in a few territories ground water has a smell and color. Round ribbed profile syntax 2500 liters water tanks used for collecting rainwater for drinking.



Sunlight : The abundant source of sunlight is not used to generate electricity.



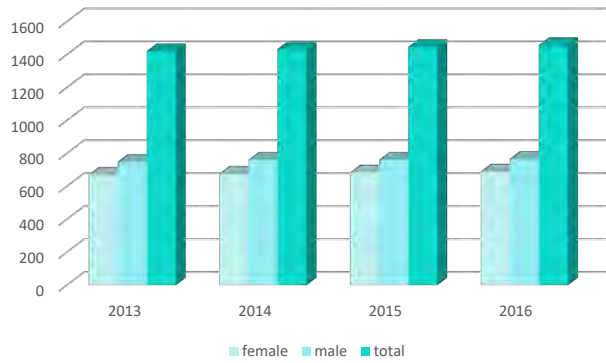
2. POPULATION & HOUSING



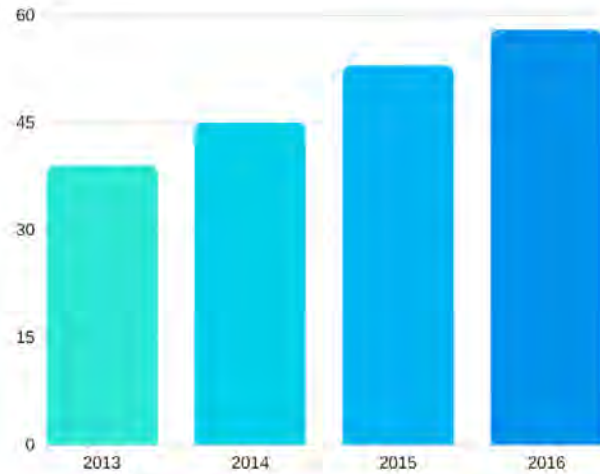
The population of the island is 1459 in the year 2016 (council,2017) as registered. However, about half of the population lives in the island and the rest have migrated to elsewhere. Due to migration most of the houses in the island are left abandoned

Population distribution

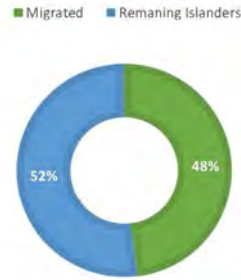
The people of the island is mainly distributed on either sides of the main road making it a linear distribution. This makes it difficult for the islanders to reach different services provided in the island.



Foreigners Populstion



Migration of people



2C

Due to the lack of facilities available from the island most of the people have no choice but to leave in order to attain an easy life. This reduces the population leading to an undeveloped island.

Abandoned Houses

As people migrate, most of the houses in the island are left abandoned. This makes most areas of the island dingy even though lights are installed on the roads, increasing cases of crime which leads to an incrementation of crimes.



2D

According to statistics given from the council there is an increasing number of foreigners living in the island. Most of the foreigners are brought to work in the agriculture field. This leads to a reduction of availability for the locals and also affects the culture of the society.



2B

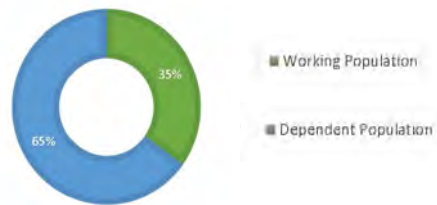


3. ECONOMY AND EMPLOYMENT



Agriculture is the main source of income in Vaadhoo. Vaadhoo is an island abundant with rich soil hence leading to thriving agricultural fields. Fishing, trepangers or cucumber harvesting and other small local businesses contribute a small percentage to the economy. However, due to the lack of efficiency from both public and private sector, majority of the islanders in Vaadhoo are unemployed.

Working population

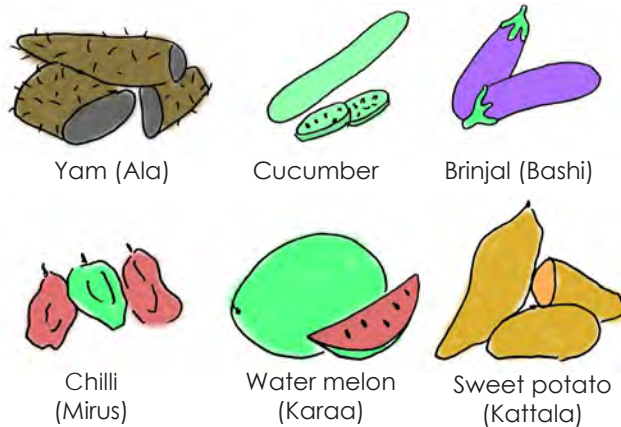


Agriculture

There are various types of vegetation cultivated in different areas of the island. From watermelon to sweet potatoes, a sustainable way of living can be achieved through agriculture. Farming is currently done on the east and west side of the island. There are currently no formal procedures and rules to acquire plots .



3A



Due to the enormity of the island, farming is not done to its maximum capacity due to lack of resources and management. For farming, mostly manual methods are used.



Green square: Agricultural farms
Red square: Guest house

Other jobs **3B**

Fishing:

Fishing has always been done on a mediocre level comparative to agriculture in Vaadhoo. However, it has now decreased to such an extent that the amount of fishing boats are only two. Only a small percentage of the islanders do it as a profession.



Shops



Cafe



Carpentry



Local tourism

People come to this island for the soul purpose of visiting blue bowl. A slow rise in demand is shown in statistics for guest house, but since there are not many guest houses tourists do not come.

Trepangers/Sea cucumber harvesting:

A recent project of trepangers was started in the south-east lagoon area. Mainly three types of sea cucumbers are harvested. Using the large lagoon area of the island this work can be expanded. Through this activity a huge profit can be generated to the economy of the island.



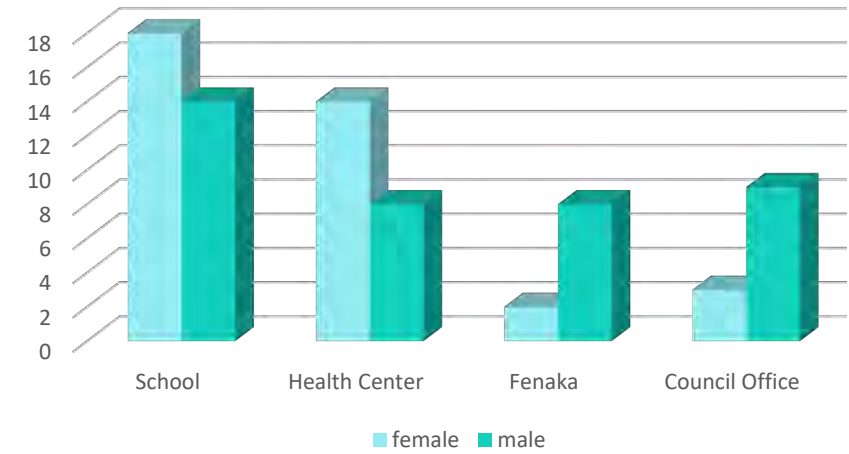
3C

Welding



3D

Government Job Statistics



4. RETAIL AND COMMERCE



The availability of basic necessities are close to scarcity in Vaadhoo. There are a total of nine shops in the island but most goods are out of stock leaving empty shelves and sometimes having to bring a halt to the business.



Commercial Spaces



- Shops
- Hardwares
- Carpentry
- Tailors
- Cafe'
- Fuel station

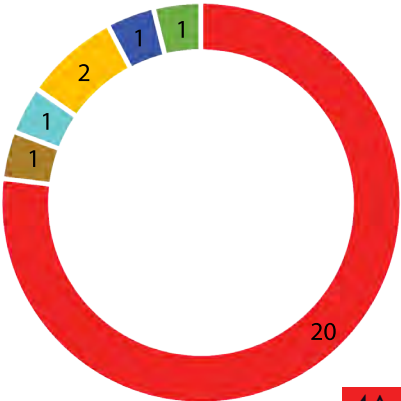
No Godown

Even though a lot of products are produced by the islanders, there is no facility for them to store these products. People keep their goods in their houses till they get sold as there is no warehouse to store them.



Varieties of shops / goods

Even though there are many shops, the varieties available in these shops are very less. The shelves in most shops are empty and the varieties available are mostly same. This makes it difficult for the locals to fulfill their basic needs.



Transportation of Goods

The main reason for lack of goods is due to the difficulty that arises in shipments from Male', the capital city of Maldives and Gdh. Thinadhoo. The difficulty in transportation, expenses and the time it takes detriment the business most of the time. Due to the insufficient goods, most islanders travel to Thinadhoo or islands close by to buy what they need.



Selling local products

There are different agricultural food that are over produced in the island. A small percentage are sold to nearby resorts. However, since there are no efficient methods to export the goods to other islands, hence, a lot of products gets wasted.



Bank Services

Most of the people in the island deposit their savings into a bank account. However, there is no way to withdraw the money due to lack of bank services in the island. The islanders have to travel to thinadhoo to get bank services.

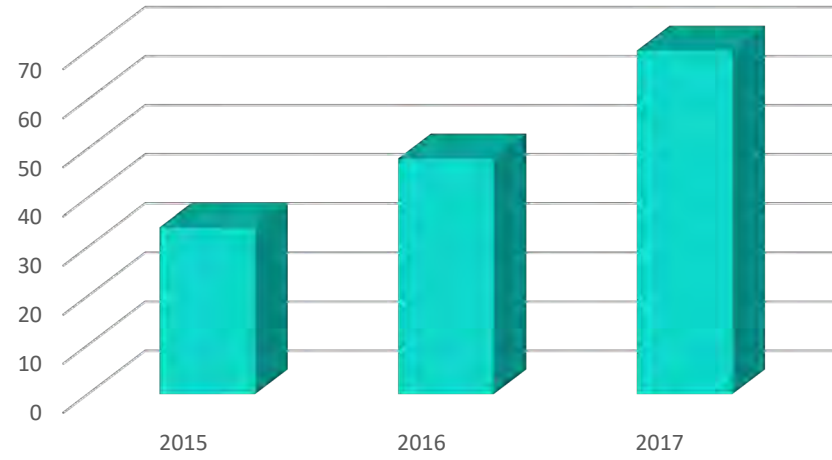


5. TOURISM & VISITORS

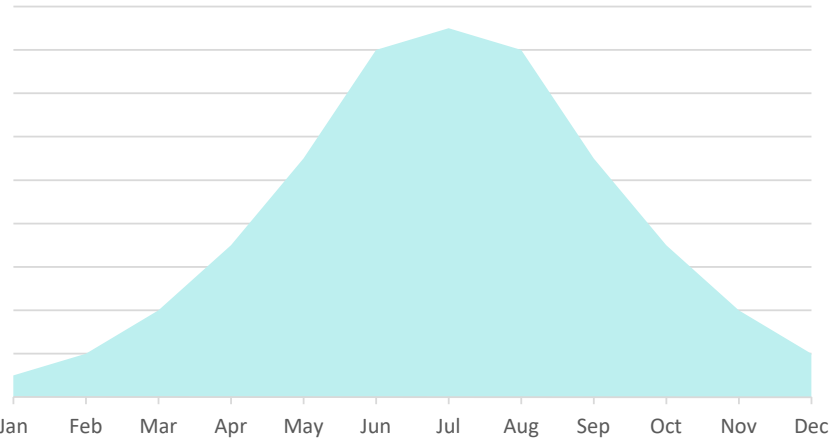


Vaadhoo is an island of pure bliss. From historical sights and artefacts to the world's 7th best surfing point called 'Blue Bowl' and everything in between. Local tourism was introduced to Vaadhoo in the year 2015 with one guest house – Serene Blue Bowl.

Occupancy (%)



According to statistics from the only guest house in the island, Serene Blue Bowl Inn, the occupancy percentage increases from year to year. This shows that tourism can be further developed in the island.



Surf based tourism

The tourism in Vaadhoo is mostly focused to the surfers. June and July are the most high peak months for these tourists. This decreases the income gained through this industry during the other months. By depending only to surf based tourism it would be difficult to develop tourism in the island.



5A



Tourism Development Area

Currently, the only guest house in the island is located within the densely populated area of the island. This causes cultural values to get mixed up. Hence it's important to have an area specific for tourism development

5B



White Sand Beach

A beautiful white sand beach is what every tourist seeks in their tour to Maldives. Vaadhoo island lacks a white sand beach due to erosion around the island. This has become a huge concern for most of the tourists that have visited the island.



5C

Traditional Activities

Boduberu, Koadinerun and Lagiri jehun are some of the traditional activities that are held occasionally in the island during special occasions, ceremonies and entertainment. Almost everyone participates in these activities creating a joyous ambience.



5B

6. RECREATION & OPEN SPACE



Providing urban open spaces for the public is highly essential for their desire to experience a sense of serenity and enjoyment in their homeland. From green parks to sports areas, it is important to create a space for different age groups to meet and socialize



② Scattered Sports Facility

In the island there are 5 sports areas. Apart from the football ground and netball ground. All the other play grounds are located nearby as these two courts are situated far from the rest. It is important to keep all the sports facilities close by because it helps in strengthening the community bond-bond when everyone gathers in the same area.



① Football ground / Netball Court

Football and Netball court is located at the place where council has decided to develop into a sports arena. However, as this place is not managed it has led to the growth of unwanted trees.



6A



③ Stage Area

The stage where entertainment shows are held for the whole community is located at a corner of a block and has limited space for people to gather and enjoy.



Open Spaces

In the densely populated area of the island there is no open spaces for people to hangout or kids to play. People usually meet with their neighbours at the veranda of their own houses.



⑤



⑤ Childrens Park

There is no childrens park in the island. The land which has been proposed to make a park is used by locals as a resting place and to hang out. This area has to be developed into a park targeted to children of all ages.



6D

7. COMMUNITY FACILITIES



Basic community facilities are available in Vaadhoo. From health facilities to educational facilities, the required services are available in this island. However, these facilities are not efficient enough. Due to lack of proper services, most islanders are forced to leave their island in order to find better facilities and an easy life.

● Mosques

There are 6 mosques in the island located at different parts of the land. This makes it easy for the locals to go to prayer where ever in the island they are. The newly built mosque which is the largest are not yet in use because of the route is not clear due to muddy road in front.

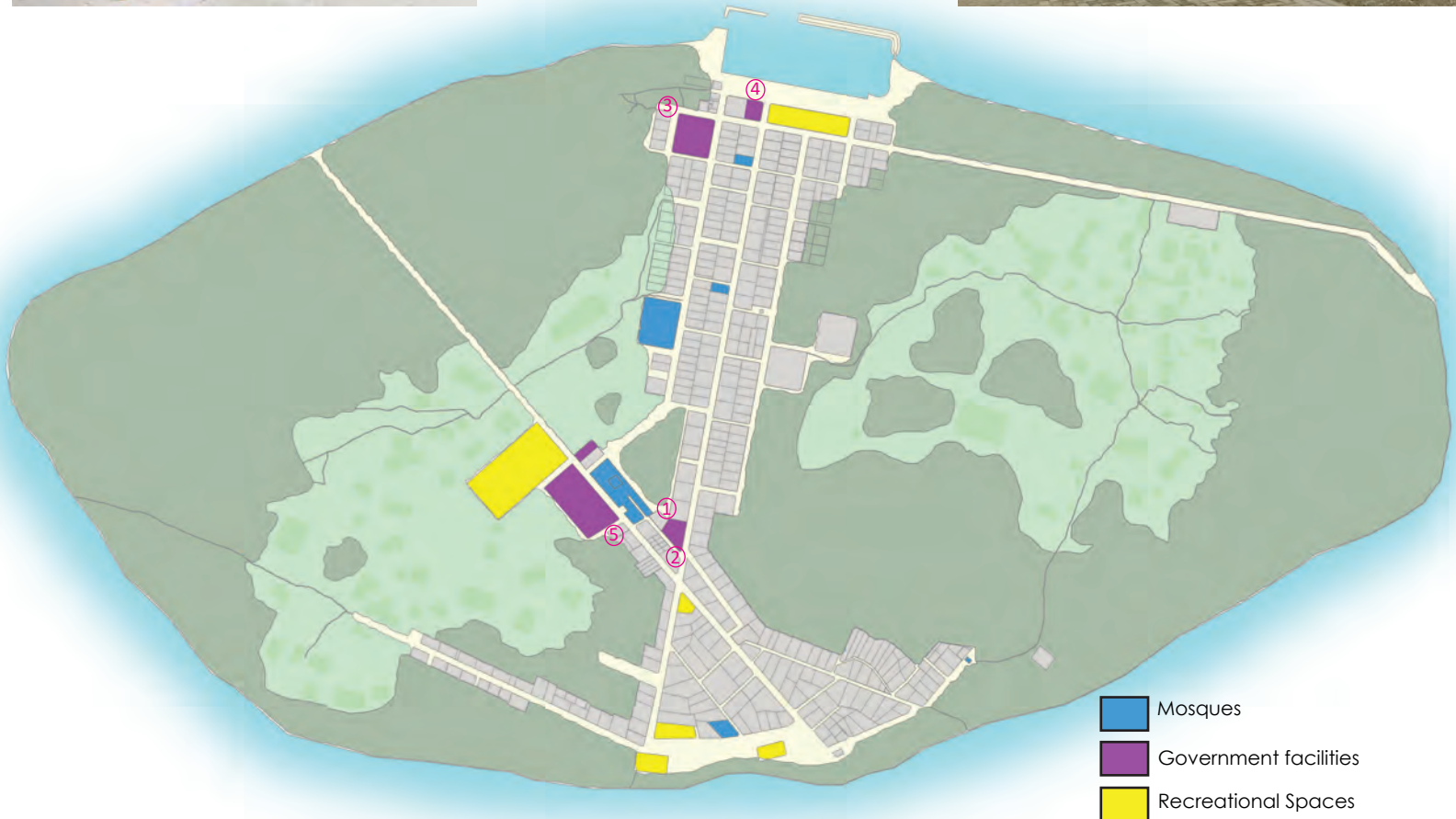


① Council Office

Council office is located in the center of the island and on the main road. Council consists of three councillors who are very enthusiastic about the development of the island.

② Majistrate Court

This building is located next to council office. The absence of a majistrate in the island delays the court cases submitted. This also increases the expenses to maintain the place.



③ Health Center

The island has a mediocre level health center which consists of 1 doctor, 3 nurse and 1 lab technician and facilitate laboratory services, ECG, maternity services and oxygen concentration. The health center is open for only 16 hours and is located at one end of the island. This makes it difficult to access the place.



7A

④ Police

Currently, there is only 4 police officers working in the station. The place being located at the harbour area makes it difficult for the people and the police officers to get the service.



⑤ Training Institutes

The island does not have a training institute other than a school. Hence, school drop outs and other youths are left behind. This increases the percentage of unemployed youth in the society.



7C

Emergency Response

The island has no facilities to use in case of a disaster or fire. Even the people are not aware of actions to be taken in such an emergency.



7B

No gathering space

The island lacks a space where people of all ages can gather for community gatherings, political rallies or for entertainment. Also, there is no space for traveler's to rest or stay near the harbor area.



7D

8. URBAN DESIGN, CHARACTER & HERITAGE



The design of Vaadhoo exists as a scattered to a grid formation. From the earliest architectural styles and materials to modern architecture, vaadhoo has maintained its ancestry with a touch of post modernism. Linearity is best described of the settlement in the island. However, there is a large percentage of the houses abandoned which leads to empty and unusable spaces. A long wide road runs across from north to south of the island making it the main road. Accessing facilities such as the health centre and school can become strenuous to some islanders depending on their location.



Unique window style



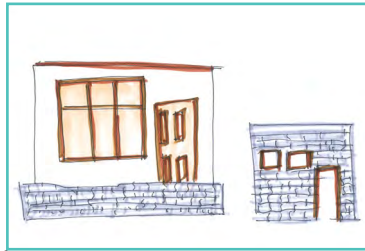
Slanted walls



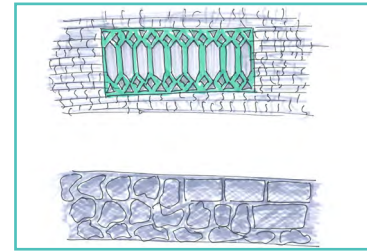
No boundary walls

Plaster & paint used

coconut leaves for roofing



Scattered layout



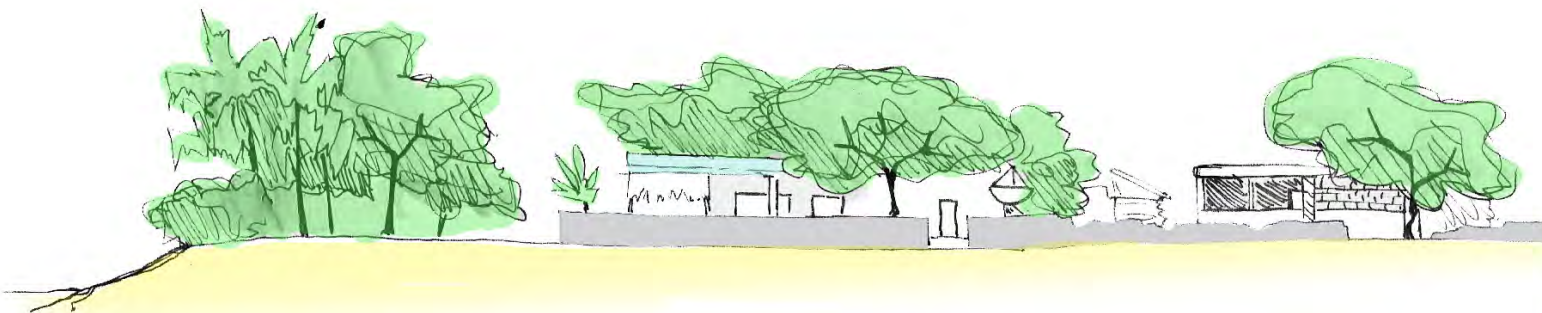
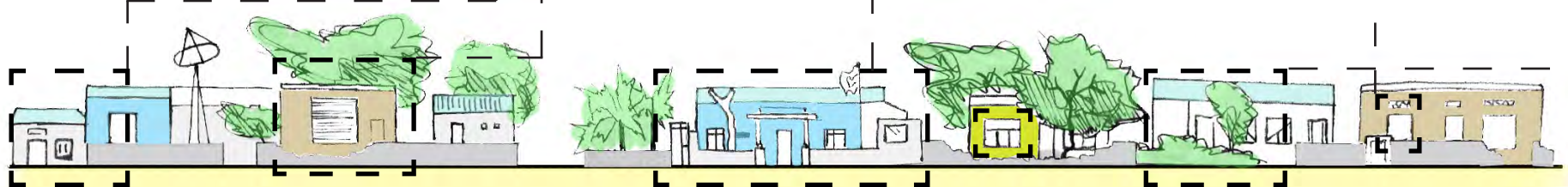
Limestone used in construction



slanted roof

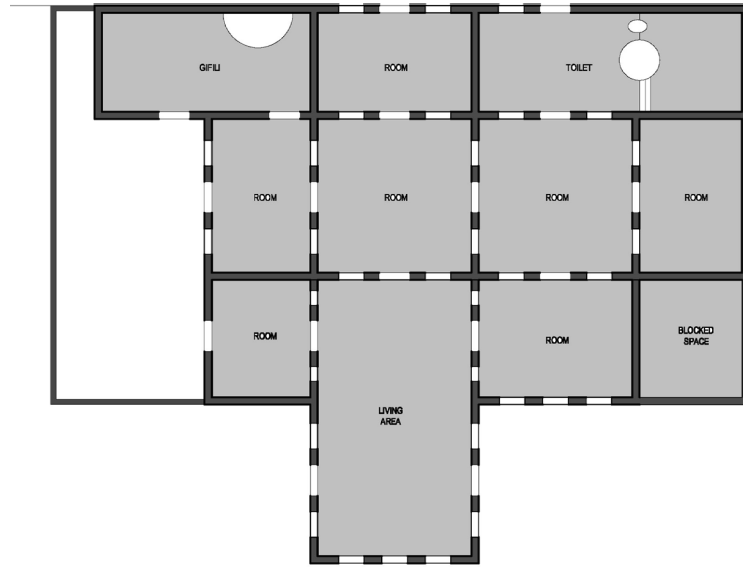
Traditional materials used

Jaali used for ventilation

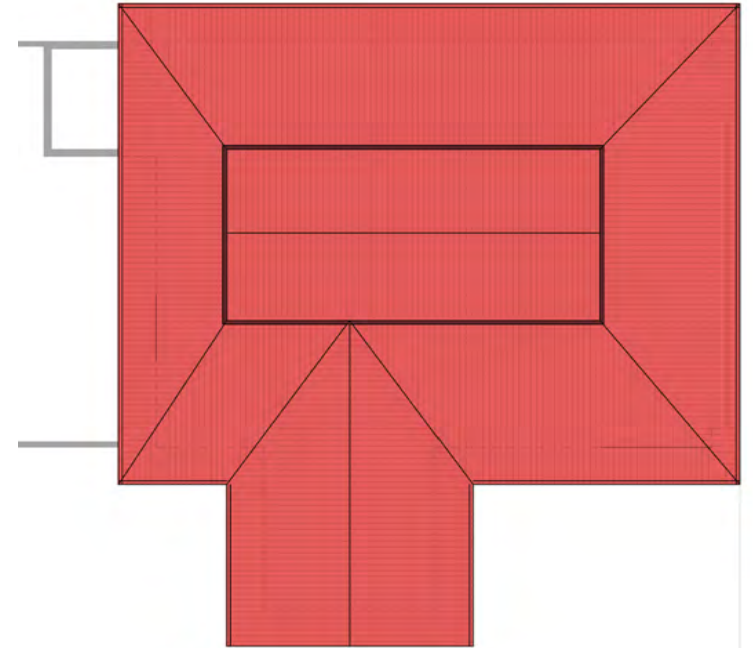


Gahdhanduge (an ancient house)

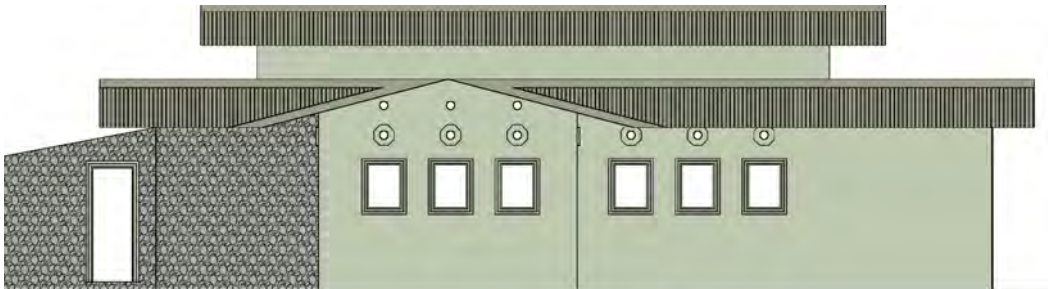
The house belongs to a famous traditional medicine doctor (dhivehi beys). The house was named "Gahdhanduge" meaning "bought farm land" as it was a land used for agricultural farming, which was later bought and used as a house.



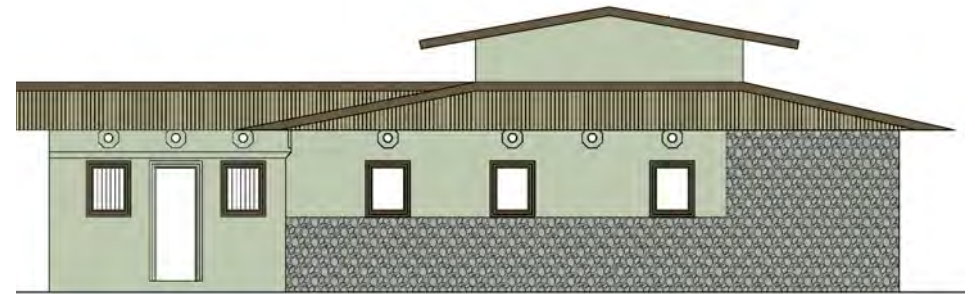
Floor Plan



Roof Plan



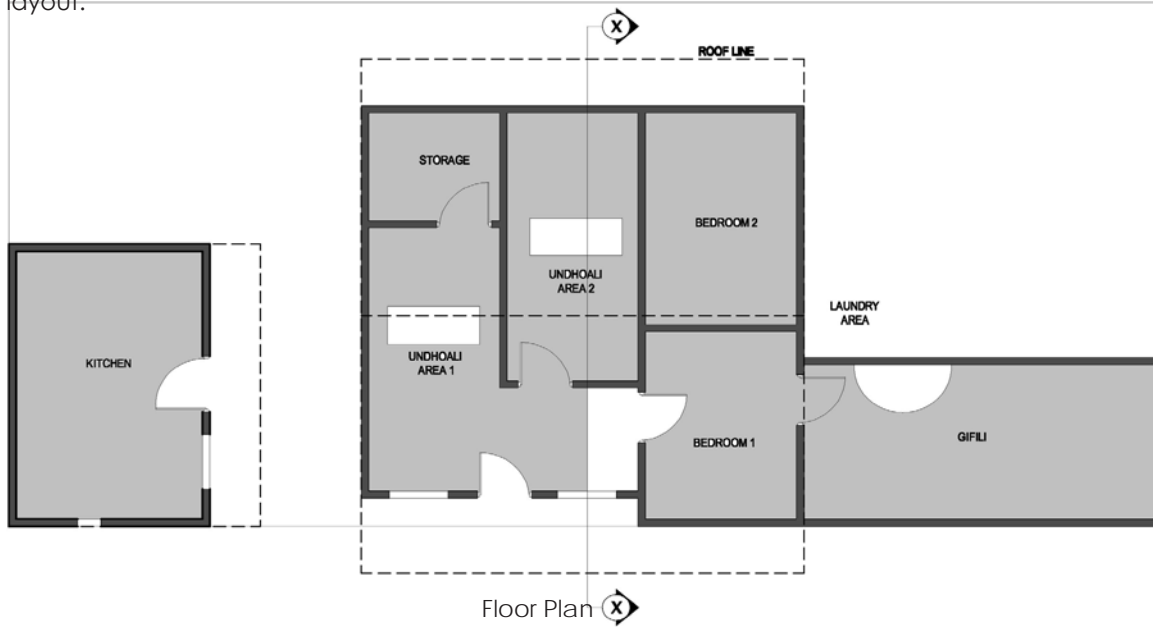
Side Elevation



Front Elevation

Contemporary House

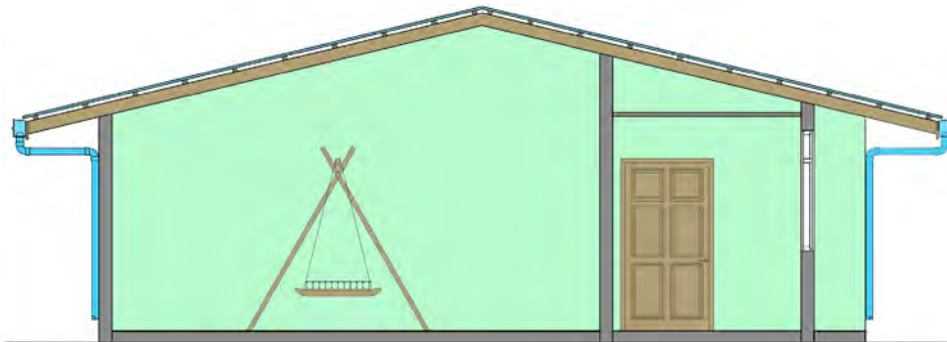
Normal Contemporary House layout.



Floor Plan X



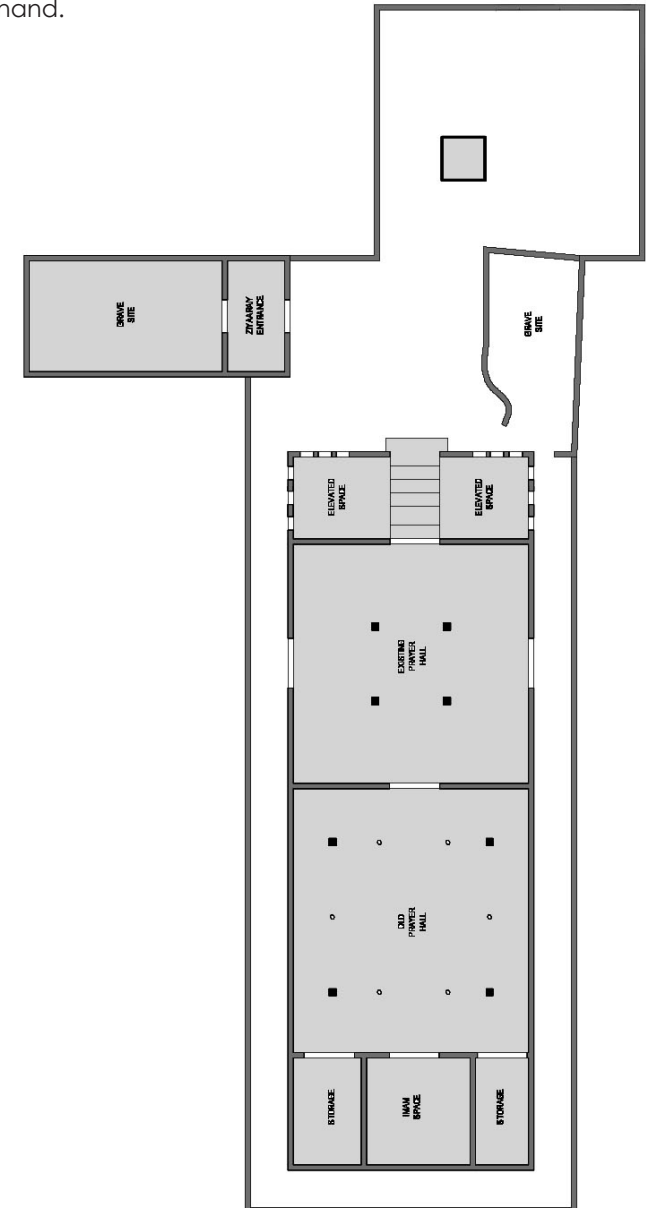
Elevation



Section

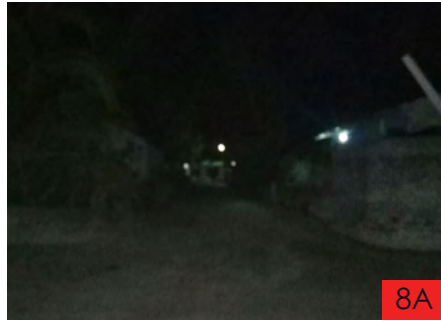
Ancient Mosque

The mosque was the teaching place of mohamed jamaa-ludheen. The mosque was built by lime stones and (hai-vakaru) wood. These stones are designed and crafted by hand.



Dark Roads

The light posts in the island is placed very far from each other, leaving 150ft between two light posts. Also, apart from the main roads all other roads have only one lightpost and these light posts are not switched off during the day showing that the system is not managed well.



Roads

There are many roads in the island, however some roads filled with vegetation and is very difficult to circulate. There are paths created by constant working. The road which the main mosque is located is also filled with vegetation. This is caused by lack of boundary wall from plots.



Zoning

In the zoning and distribution of the facilities and local amenities, due to some places being far away from islanders it is difficult to circulate and get facilities from these places. Health center is a must for all citizens to have, however due to improper zoning, these facilities are too far from citizens.



8C

The history of Vaadhoo is seen through the scattered heritages in the island. Each heritage defines a different story that reflects the culture of the islander's ancestors. From the four 'Ziyaarai' which was built as a tribute for the four brothers who were famous religious scholars to the hidden temples known as 'Hawitta', this island is filled with history of its ancestors



Heritage not preserved

Vaadhoo island is the main hub to historical places in the atoll. Nonetheless, these places are not preserved by the council which has caused most of these places to get damaged.



Rich History

Even though the island has a rich history, most of the locals are not aware of this. There are no way to archive the historical information recieved from old aged people. Most landmarks are not visible due to negligence.



1. Bodu Havihtha/Kuda havihtha



Havihtha is the ruin of a Buddhist chaitya whose main feature is its ruined stupa

4. Ancient Mosque



This Mosque is a tribute for one of the most influential and greatest religious scholar, Mohammed Jamaa-luddin or Vaadhoo's dhanakaleygefaanu. He was not only beloved in Vaadhoo but throughout Maldives. A great teacher and a philosopher, he spent his time teaching his students and practicing Islam religion. People used to visit his tomb and perform a spiritual ritual in order to find blessings.

2. Gale Miskiy Ziyaarai



This was a place where pregnant women used to go for a spiritual ritual for an easy labour. It was in their belief that a woman should go when they are in their third trimester to get the blessing from the dead. Even though this site only exists of tombs, there used to be a mosque with different essential equipment's that was used in these rituals.

5. Thunde Ziyaarai



This is a location where islanders used to visit the graves of their ancestors for the purpose of attaining blessing during the low fishing seasons. The name 'Thundey' ziyaarai originated from its location which is near the beach area or 'Thundi'.

3. Bulhahnaaru Ziyaarai



Men of Vaadhoo used to visit this ziyaarai for a spiritual ritual in order to aid them when one of their 'odi dhoanis' are later in arrival due to changes of wind. This ziyaarai is situated within a dense vegetated area and the ancestors used to decorate it by putting white sand near the tombs as a sign of respect.

6. Vevu



Vevu or bathing tanks, were used as public baths and later for ablution. The actual period of this Vevu is unknown, however sandstone used in construction is evidence pointing to the pre-Islamic period.

9. TRAFFIC, TRANSPORT & INFRASTRUCTURE

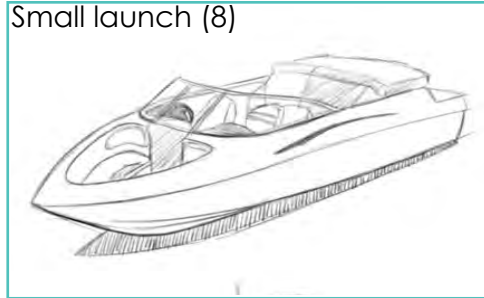


Different means of transportation are used within the island as the island itself is prodigious in size. From bicycle to motor cycle to lorry to a tuk tuk or 'kurafi' in common terms, different people use different means of vehicles for their ease. Riding a vehicle on the roads of Vaadhoo is no easy task due to the uneven and poorly maintained roads.

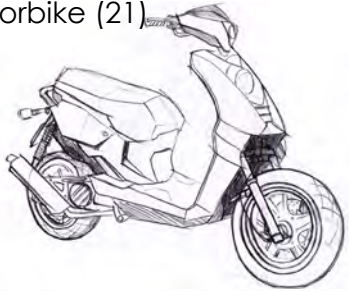
Bicycle (132)



Small launch (8)



Motorbike (21)



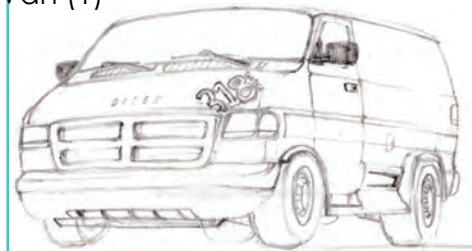
Pickup (1)



Island pickup (7)



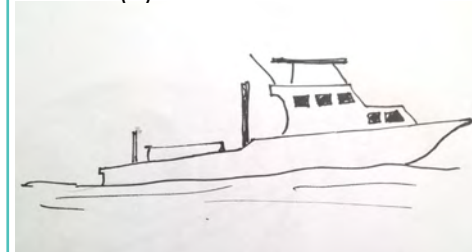
Van (1)



Ambulance (1)



Dhoani (2)



FENAKA

Electricity for the island is provided by Fenaka. They started giving there services in 2015. Before that the power house was built and handled by the council members.



Telecommunication

Telecommunication services are provided by two companies, dhiraagu and ooredoo.



Transport Routes

It is difficult to travel from and to the island, due expensive travel cost and no direct route to the island.



9A

Sewage Disposal

The houses use septic tanks for the disposal of sewage. As the island has a shallow water lens, having septic tanks has caused the fresh water lens of the island to get polluted.



9B

Waste management

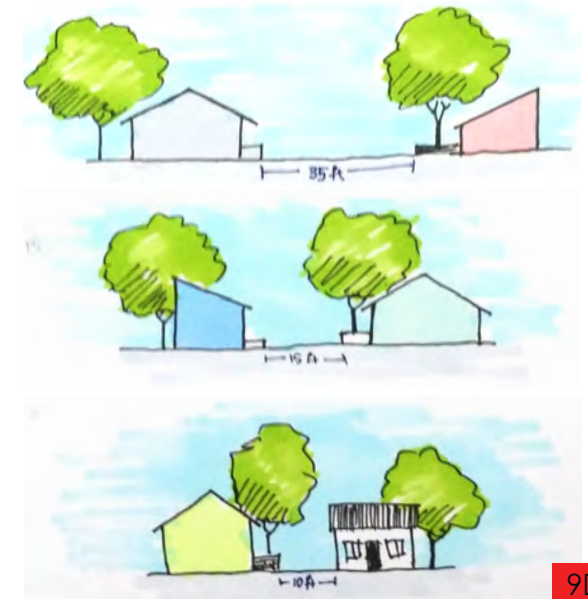
Even though the island consists of a waste management center, it has not yet been used. Currently waste is disposed to a dense vegetation or piled up to a specific area and is burned under no regulation.



9C

Roads

There are 3 main heirarchy of roads. However no proper drainage systems are installed which leads to formation of puddles when it rains making it difficult to walk and travel.



9D



Peak hours
06:45 - 08:15
09:45 - 10:00
12:50 - 13:15
14:00 - 14:30

PROPOSED STRATEGIES & ACTION PLANS

1. PHYSICAL FEATURES, CLIMATE, NATURAL HERITAGE & NATURAL RESOURCE MANAGEMENT

Vulnerability 1A

Natural heritage not preserved

To preserve the 400 year old tree a boundary can be created around to identify the place along with an access route. Also, adventure tourism could be introduced nearby.



Vulnerability 1B

Soil erosion occurs in a large area of the island

Grow plants such as kuredhi, and coconut palms which would grip soil and prevent excess movement of soil. These plants can also act as a buffer zone around the island. Then we could create a retaining wall using stone or sand bag. Then to create a white sand beach groynes will be created. Groynes help bring sand through wave circulation.



Vulnerability 1 C

Natural Resources not fully utilized

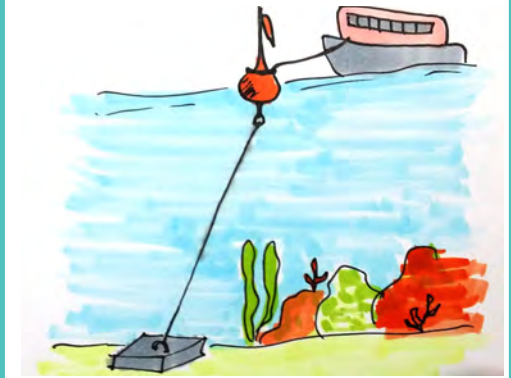
The large lagoon area of the island can be used to harvest sea cucumbers and also to carry out tourism related activities such as diving and snorkeling. The abundant source of sun light can be used to generate electricity by installing solar panels or solar roof tiles on top of build-



Vulnerability 1D

Reef Damage due to anchoring

The damage given to reefs can be mined by the installation of Eco mooring system in that area. Also, aqua culture can be promoted through tourism where tourists plant corals.

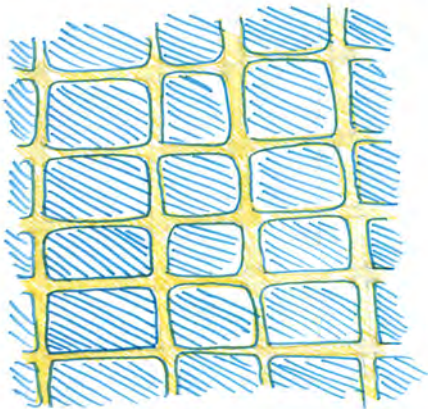


2. POPULATION & HOUSING

Vulnerability 2A

Linear Land Distribution

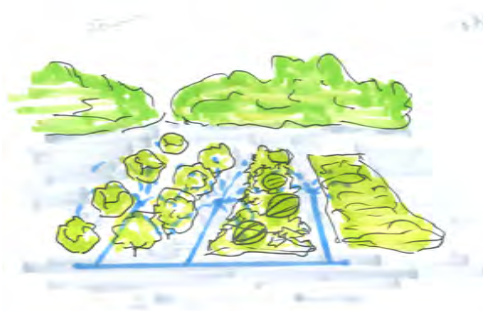
Centralized land distribution is proposed so that locals can get access to facilities easily.



Vulnerability 2B

Increasing the number of foreigners in the island

To minimize this issue, we could train the locals for the jobs occupied by the foreigners. Also, in fields like agriculture where most of the foreigners work modern technologies could be used to reduce man power.



Vulnerability 2C

The migration of people has led to decrease in population

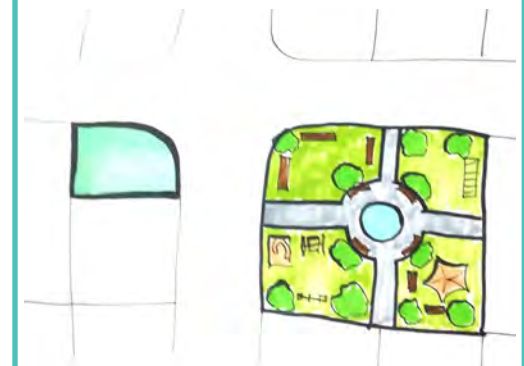
This could be prevented by improving the facilities like health, education and increasing job opportunities.



Vulnerability 2D

Lots of under developed and Abandoned Houses

According to regulation abandoned houses can be taken by the council after certain years. These plots then can be used to create pocket parks or commercial spaces. Also, to maintain the culture these houses could also be restored without demolition and be used for other purposes.



3. ECONOMY & EMPLOYMENT

Vulnerability 3A

Agricultural farms not organized well

A certain plot size could be allocated for all plots and create routes so that circulation through the fields is easier even with vehicles.



Vulnerability 3B

Lack of Job opportunities.

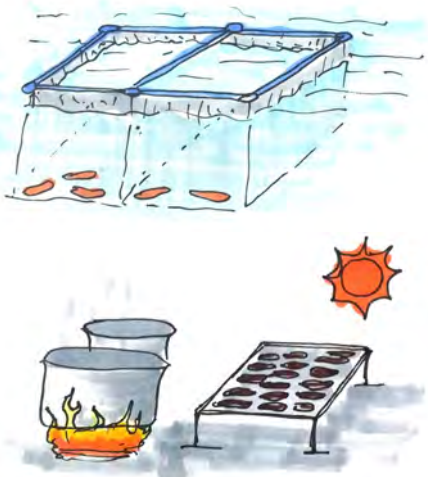
Introduce new businesses such as an ice plant system in the harbor area. This way fishing vessels will make a stop at the island and local products can be also sold.



Vulnerability 3C

Expand Sea cucumber Harvesting

Determine specific cage sizes for harvesting sea cucumber and allocate more space for this work in the south east area of the island where it has started. A sea cucumber processing factory could be opened in the island so the people and the council will get an income and also provide more job opportunities.



Vulnerability 3D

Expand Local Tourism

Now only one guest house exists in the island, hence if more guest houses and tourism related activities are developed it will expand tourism



4. RETAIL & COMMERCE

Vulnerability 4A

Less variety of shops and goods

Vulnerability 4B

Transportation of goods is difficult

Vulnerability 4D

Difficulty in selling Local products

Vulnerability 4C

No bank/ ATM in the island

Build more variety of shops such as garments, bookshops, cosmetics etc..



Arrangements could be made in a way that cargo ships which travel through the atoll would stop at the island.



Open a local market near the harbor area. This place will be used to sell the goods produced through agriculture and other fields. As it is located near the harbor area people who stop by the island can do buy these products.



We could make arrangements with the Bank of Maldives, so that a 'Dhoani Bank' would visit the island every month for the withdrawal and deposit of money. This would be important for money exchanges related issues when tourism is developed.



5. TOURISM & VISITORS

Vulnerability 5A

Now tourism is only targeted to surfers only

Tourism can be targeted to locals during Eid and school holidays by offering them lower rates. Also, agricultural tourism and adventure tourism can be in co-operated.



Vulnerability 5B

No tourism development zone

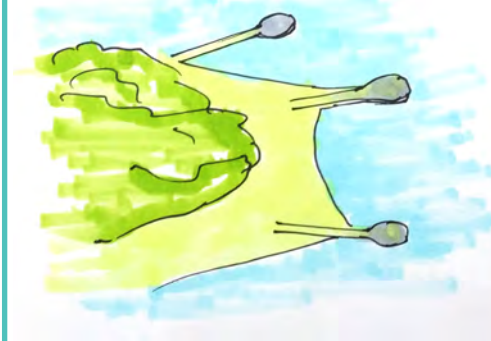
Allocate a specific area from the island to develop tourism. These areas could also have tourism support zones where a water sports center can be developed along with other services such as souvenir shops and cafes



Vulnerability 5C

No existing white sand beach

A white sand beach is created with the installations of groynes. These groynes will be further developed into gathering areas.



Vulnerability 5D

Traditional Activities practiced

The locals in the island has a keen interest in traditional activities. Hence this can be used to gain profit for the locals through tourism



6. RECREATION & OPEN SPACE

Vulnerability 6A

No indoor sports area

Vulnerability 6B

Inappropriate location and space for stage area

Vulnerability 6C

Few gathering spaces

Vulnerability 6D

Land given to develop children's park not developed

Introduce a youth center with an indoor sports arena with badminton, carrom, chess, etc..

Develop the sports arena in such a way that volley court and other play areas are connected together.



Stage area moved to another location where it's accessible to more people and is more convenient



Create pocket parks in the densely populated neighborhood area and make a barbecue area at the harbor. Also allocate a large area as a public square where people will gather in special occasions and disasters.



Develop the area in such a way that children of the island can use the space most effectively.

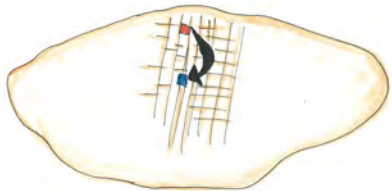


7. COMMUNITY FACILITIES

Vulnerability 7A

Health center and police located far from the urban area

These two facilities has been relocated close by to densely populated area along with increased and advanced facilities and space.



Vulnerability 7B

No emergency response team

Recruit a group of people as a fire and disaster management team and provide them with required equipment's to use during such a situation. This will be very important when the island focuses on developing tourism.



Vulnerability 7C

No Vocational Training institute

A training institute is required to train school dropouts and other locals to specific fields. This would increase the percentage of locals working in the island.



Vulnerability 7D

No Travellers Square or public square

A public Square can be developed in the island so that this space can be used by the community for important celebrations and also as a safe place everyone to gather during disasters. This place will be the center point for civic life of the island. A traveler's square can be built in the harbor area for people to gather and rest. These spaces can play an important role play in fostering community connections and quality of life.



8. URBAN DESIGN, CHARACTER & HERITAGE

Vulnerability 8A

Inadequate number of light posts, hence the roads are dark

Vulnerability 8B

Nature overtaking roads

Vulnerability 8C

Zoning of Facilities

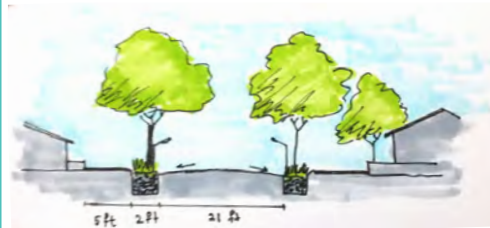
Vulnerability 8D

Heritage not preserved

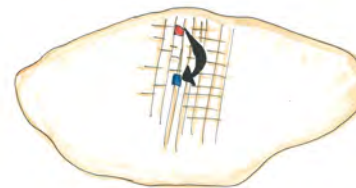
Light posts are designed to be installed on both sides of the main roads and the lights used will be LED lights or solar powered lights. The distance between the light posts is reduced to 50ft instead of 150ft. The light posts will be managed by fenaka in such a way that it turns off during day light through sensors.



Enforcing a regulation which consist of building a boundary wall in each plot which would stop the outgrowing of vegetation. Also the roads need to be maintained and developed well.



Relocation of facilities and utilities for easier access and circulation by the islanders.



All school students will be studying a specific subject to study the history of the island. This creates an interest among the students about the important events that took place in the island. All history related information will be archived so that it would be seen by the future generations. the heritage sites will be identified with information boards.



9. TRAFFIC, TRANSPORT & INFRASTRUCTURE

Vulnerability 9A

Access to island is difficult

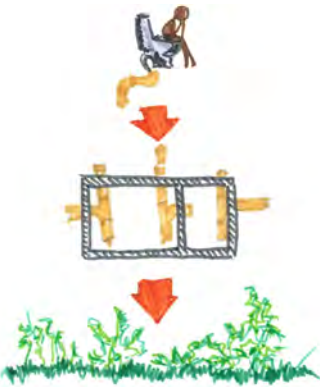
Introduce a direct ferry system in a weekly basis. This system would help in travelling and also with goods transportation from and to the island.



Vulnerability 9B

Individual septic tanks are used for sewerage system

Sewerage system is to be developed in the island where sewage system will be treated and used in agriculture to water plants and as fertilizers



Vulnerability 9C

Waste management system not maintained

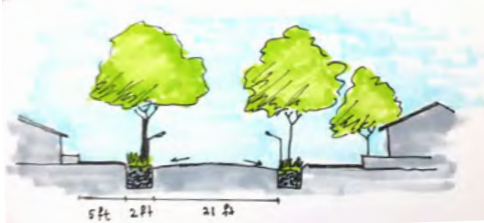
Dustbins will be placed at specific locations, especially at the beach. Waste will be collected from residential houses by a pickup operated by council.



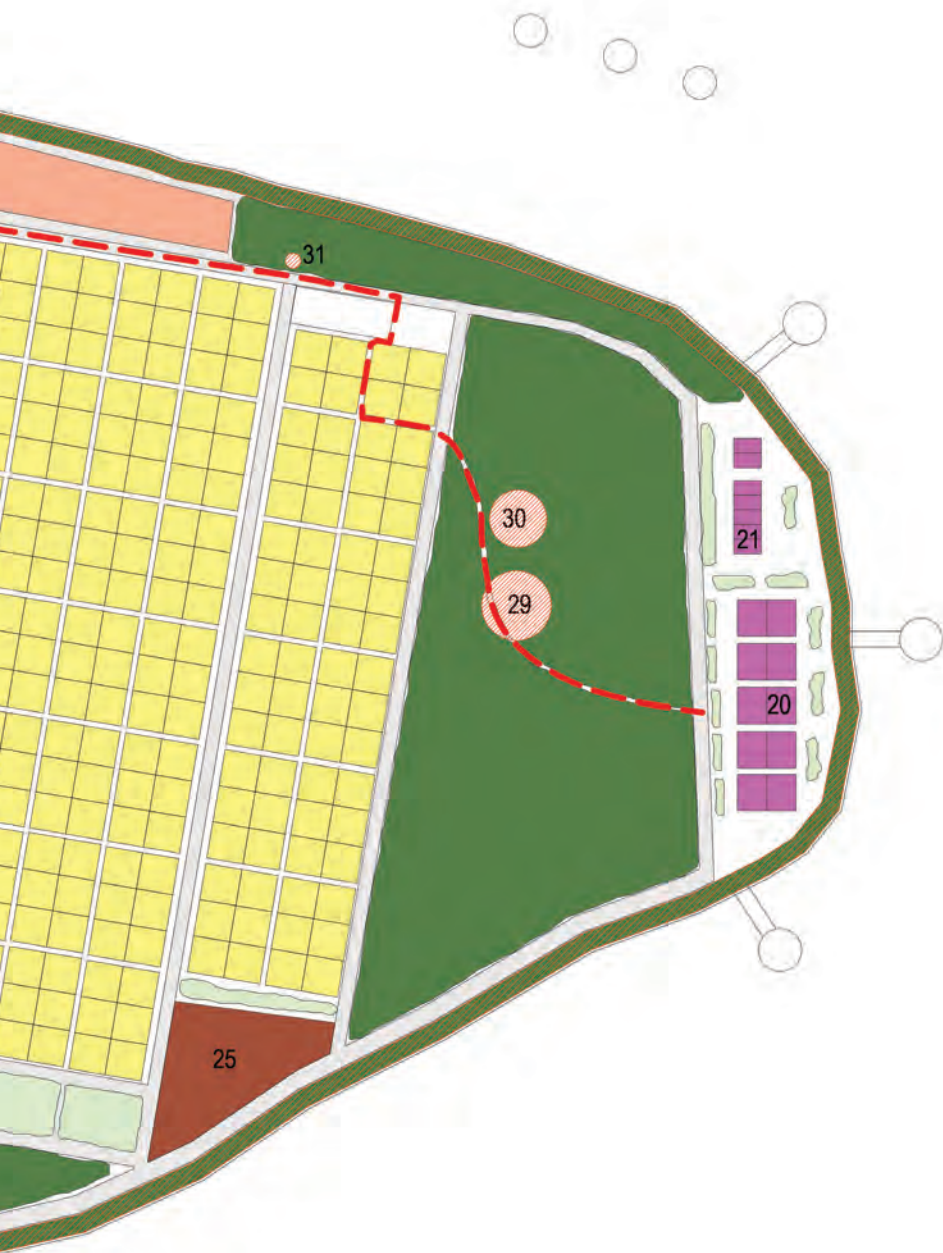
Vulnerability 9D

No drainage system


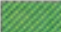











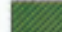

A well maintained drainage system is developed in the island so that it minimize the issue of roads getting muddy and uneven.







LEGEND

- | | | | |
|---|---------------------------------|---|------------------------------|
|  | EXISTING RESIDENTIAL ZONE |  | SPORTS & RECREATION ZONE |
|  | INHABITAT RESIDENTIAL ZONE | | 10. Travelers Square |
|  | PROPOSED RESIDENTIAL ZONE | | 11. Children Park & Stage |
|  | INSTITUTIONAL & COMMUNITY ZONE | | 12. Pocket Park |
| | 1. Health Center | | 13. Park |
| | 2. Police | | 14. Sports Arena |
| | 3. Pre-school | | 15. Youth Center |
| | 4. Court & Council | | 16. Futsal Court |
| | 5. School | | 17. Volley Court |
| | 6. Vocational Training Center | | 18. Bashi Court |
| | 7. Public Square | | 19. BBQ area |
|  | COMMERCIAL ZONE |  | TOURISM ZONE |
| | 8. Hotel | | 20. Tourism Development Area |
| | 9. Market | | 21. Tourism Support Area |
|  | UTILITIES |  | HERITAGE LOCATIONS |
| | 22. Fenaka | | 28. Guide Map |
| | 23. Dhiraagu | | 29. Havitha (Big) |
| | 24. Ooredoo | | 30. Gale Misky |
| | 25. Waste Management & Sewerage | | 31. Bulhanaabu Ziyaarai |
|  | PROPOSED INDUSTRIAL ZONE | | 32. Havitha (small) |
| | 26. Sea Cucumber Factory | | 33. Jamaaludheen Ziyaaarai |
| | 27. Ice Plant | | 34. Vevu |
|  | AGRICULTURAL FARM LAND | | 35. Nika Gas |
|  | MOSQUES | | 36. Thundey Ziyaarai |
|  | PROPOSED GREEN ZONE | | |
|  | VEGETATION | | |
|  | BUFFER ZONE | | |

REFERENCES

Australia, W. (2010). Local Planning Manual. Western Australian Planning Commission.

Commission, W. A. (2014). Introduction to the Western Australian Planning System.

Australia: Department of Planning. Llewelyn-Davies. (n.d.). URBAN DESIGN COMPENDIUM.

English Partnerships.

Mohamed Thoriq Hamid, A. S. (n.d.). Civic Forum. Transparency Maldives.

Vincent, C. o. (2013). Strategic Community Plan 2013 -2023.

PRODUCTION TEAM

ISMAIL SHIYAZ (53186)

ISMAIL RAFEEU (09739)

USMAN AKMAL (36875)

AHMED HATHIM (08512)

FATHIMATH MAASA (48113)

FATHMATH ZAHA ZUHOOR (37915)