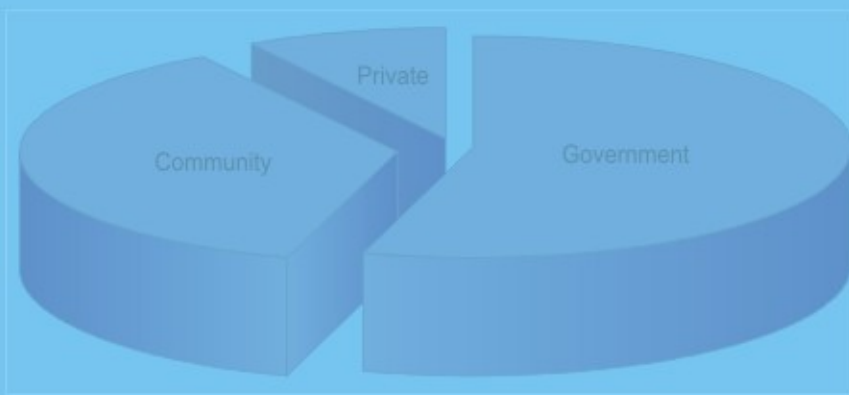


EDUCATION STATISTICS 2004



**MINISTRY OF EDUCATION
REPUBLIC OF MALDIVES**

TABLE OF CONTENTS

	Page
2004	1
2004	3
2004	4
2004	6
2004	8
2004	10
2004	12
2004	14
2004	15
2004	16
2004	17
2004	18
2004	19
2004	20
2004	21
2004	22
2004	23
2004	24
2004	25
2004	26
2004	27
2004	28
2004	29
2004	30
2004	31
2004	32
2004	33
2004	34
2004	35
2004	36
2004	37
2004	39
2004	40
2004	41
2004	42
2004	43
2004	46
2004	47

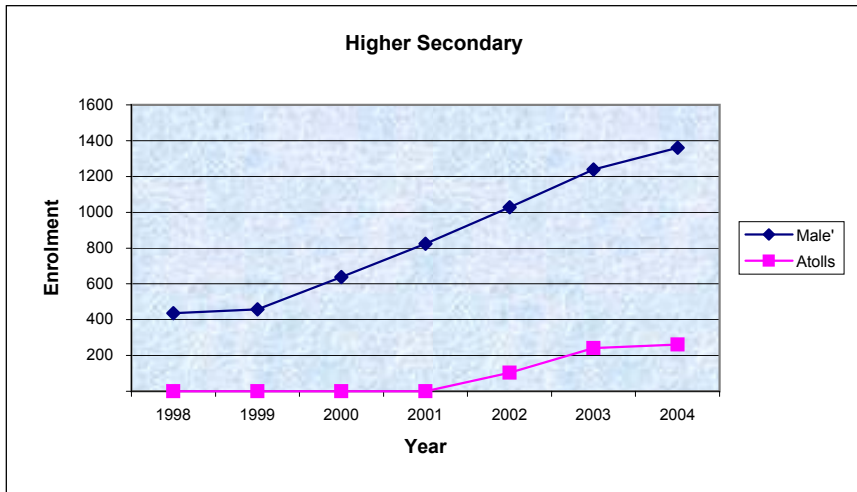
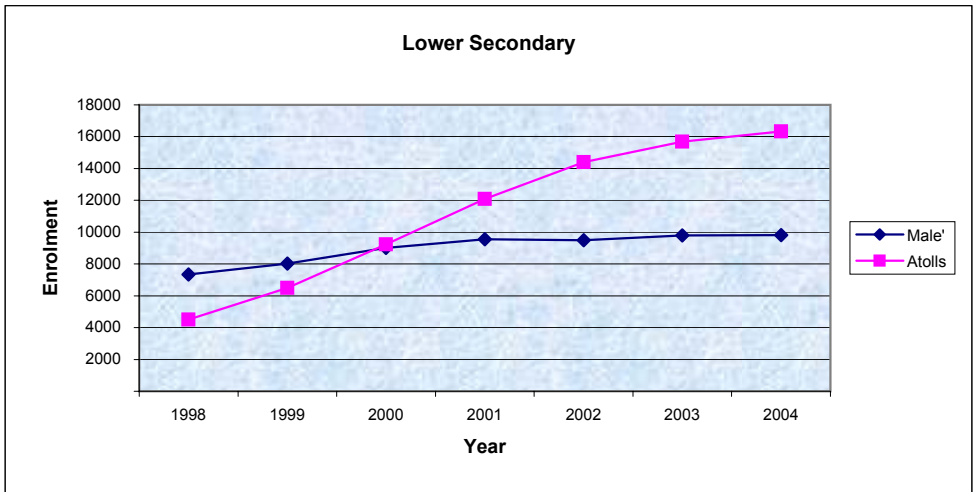
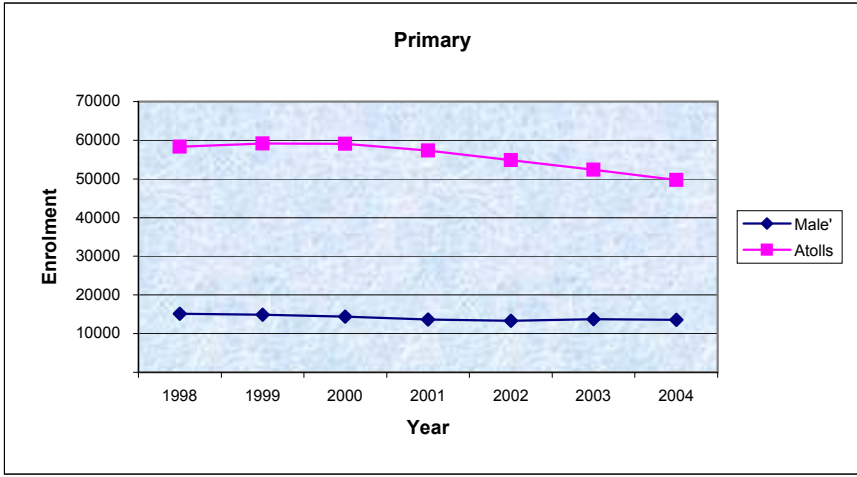
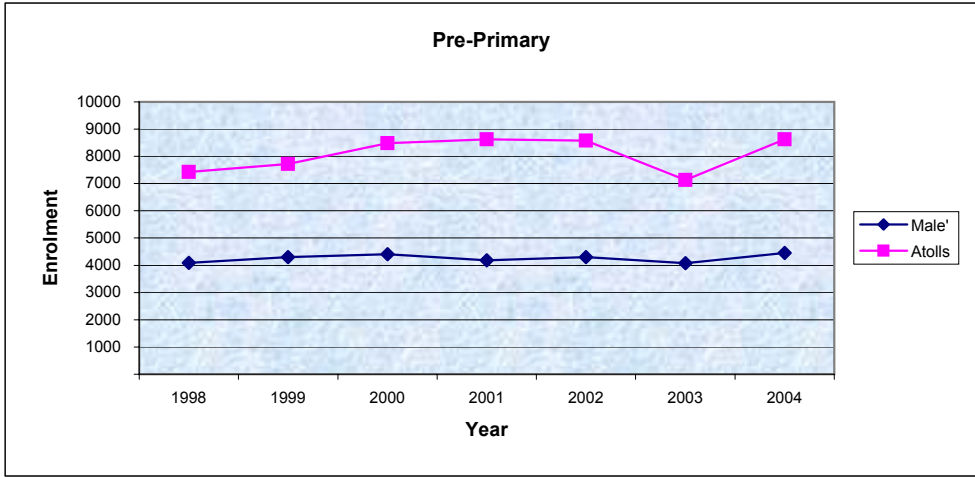
2004 EDUCATION STATISTICS Republic of Maldives

ދިވެހިރާއްޖޭގެ ޖުމްހޫރިއްޔާ ގުޅިގެން ސަރުކާރުގެ ޖަލުސާރުގެ ދަށުން (މަސަލާ ގަނޑު)
STUDENT ENROLMENT IN MALDIVES (GROSS)
(1992 - 2004)

Provision	1992	1993	1994	1995	1996	1997	1998	1999	2000	2001	2002	2003	2004
Republic													
Total	73642	78639	83855	87878	90597	93375	97323	101081	105356	106391	106220	104408	104214
Government Schools	32475	35138	36693	39032	40935	43757	46352	49721	53413	56224	56579	58682	57139
Community Schools	33779	35486	38662	39565	40153	41295	42159	42524	42352	40448	40519	37540	38042
Private Schools	7388	8015	8500	9281	9509	8323	8812	8836	9591	9719	9122	8186	9033
Male'													
Total	22802	23177	23500	24570	25641	26190	27057	27714	28547	28306	28243	28950	29307
Government Schools	12568	12962	13226	13255	13567	14124	14588	15167	15820	16456	16845	17838	18278
Community Schools	6014	5838	5810	6368	7418	7875	8348	8382	8326	7749	8030	7737	7559
Private Schools	4220	4377	4464	4947	4656	4191	4121	4165	4401	4101	3368	3375	3470
Atolls													
Total	50840	55462	60355	63308	64956	67185	70266	73367	76809	78085	77977	75458	74907
Government Schools	19907	22176	23467	25777	27368	29633	31764	34554	37593	39768	39734	40844	38861
Community Schools	27765	29648	32852	33197	32735	33420	33811	34142	34026	32699	32489	29803	30483
Private Schools	3168	3638	4036	4334	4853	4132	4691	4671	5190	5618	5754	4811	5563

(2000 - 2004) ENROLMENT TRENDS BY LEVEL - MALE AND ATOLLS

LEVEL	2000						2001						2002						2003						2004					
	MALE'			ATOLLS			MALE'			ATOLLS			MALE'			ATOLLS			MALE'			ATOLLS			MALE'			ATOLLS		
	FEMALE	MALE	TOTAL	FEMALE	MALE	TOTAL	FEMALE	MALE	TOTAL	FEMALE	MALE	TOTAL	FEMALE	MALE	TOTAL	FEMALE	MALE	TOTAL	FEMALE	MALE	TOTAL	FEMALE	MALE	TOTAL	FEMALE	MALE	TOTAL	FEMALE	MALE	TOTAL
Pre-Primary (Nur, LKG, UKG)													2135	2170	4305	4188	4393	8581	1998	2081	4079	3542	3585	7127	2209	2241	4450	4248	4377	8625
Primary (Grades 1 - 7)	7150	7285	14435	28614	30473	59087	6894	6793	13687	27490	29877	57367	6695	6660	13355	26106	28781	54887	6847	6916	13763	24774	27632	52406	6750	6856	13606	23410	26284	49694
Lower Secondary (Grades 8 - 10)	4613	4405	9018	4905	4331	9236	4975	4576	9551	6393	5700	12093	5165	4332	9497	7491	6915	14406	5460	4343	9803	8134	7549	15683	5486	4328	9814	8410	7917	16327
Higher Secondary (Grades 11 - 12)	274	364	638				330	494	824				457	571	1028	47	56	103	597	642	1239	112	130	242	641	720	1361	124	137	261
Special Classes*													24	34	58				29	37	66				31	45	76			
TOTAL	12037	12054	24091	33519	34804	68323	12199	11863	24062	33883	35577	69460	14476	13767	28243	37832	40145	77977	14931	14019	28950	36562	38896	75458	15117	14190	29307	36192	38715	74907



ދިވެހިރާއްޖޭގެ ޖުމްހޫރިއްޔާ ގުޅިގެން
ENROLMENT BY LEVEL AND TYPE
(MARCH 2004)

LEVEL	Pre-Primary			Primary			Lower Secondary			Higher Secondary			Special Classes			Total			
	Female	Male	Total	Female	Male	Total	Female	Male	Total	Female	Male	Total	Female	Male	Total	Female	Male	Total	
REPUBLIC	Government	34	26	60	18436	20269	38705	8698	8040	16738	740	820	1560	31	45	76	27939	29200	57139
	Community	4025	4007	8032	11247	12358	23605	3463	2942	6405	0	0	0	0	0	0	18735	19307	38042
	Private	2398	2585	4983	477	513	990	1735	1263	2998	25	37	62	0	0	0	4635	4398	9033
	Total	6457	6618	13075	30160	33140	63300	13896	12245	26141	765	857	1622	31	45	76	51309	52905	104214
MALE'	Government	0	0	0	5779	5987	11766	2636	2501	5137	616	683	1299	31	45	76	9062	9216	18278
	Community	2048	2050	4098	677	566	1243	1349	869	2218	0	0	0	0	0	0	4074	3485	7559
	Private	161	191	352	294	303	597	1501	958	2459	25	37	62	0	0	0	1981	1489	3470
	Total	2209	2241	4450	6750	6856	13606	5486	4328	9814	641	720	1361	31	45	76	15117	14190	29307
ATOLLS	Government	34	26	60	12657	14282	26939	6062	5539	11601	124	137	261	0	0	0	18877	19984	38861
	Community	1977	1957	3934	10570	11792	22362	2114	2073	4187	0	0	0	0	0	0	14661	15822	30483
	Private	2237	2394	4631	183	210	393	234	305	539	0	0	0	0	0	0	2654	2909	5563
	Total	4248	4377	8625	23410	26284	49694	8410	7917	16327	124	137	261	0	0	0	36192	38715	74907

Pre-Primary: Nursery, LKG, UKG

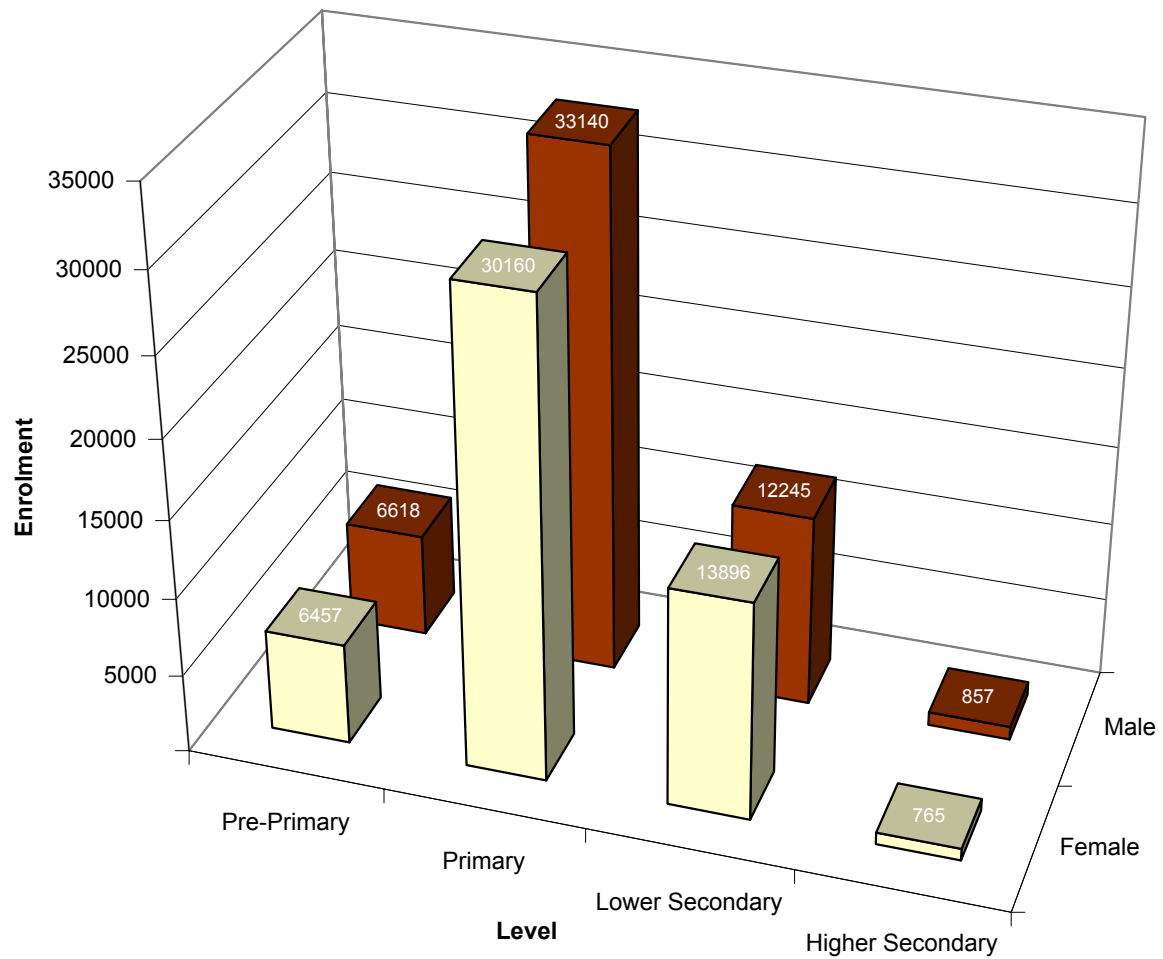
Primary: Grades 1 - 7

Lower Secondary: Grades 8 - 10

Higher Secondary: Grades 11 - 12

ދިވެހިރާއްޖޭގެ ޖުމްހޫރިއްޔާއި ސަރުކާރުގެ ގެޒެޓްގައި ބަޔާންކޮށްފައިވާ ގޮތުގައި

TOTAL STUDENT ENROLMENT IN THE MALDIVES BY LEVEL
(MARCH 2004)

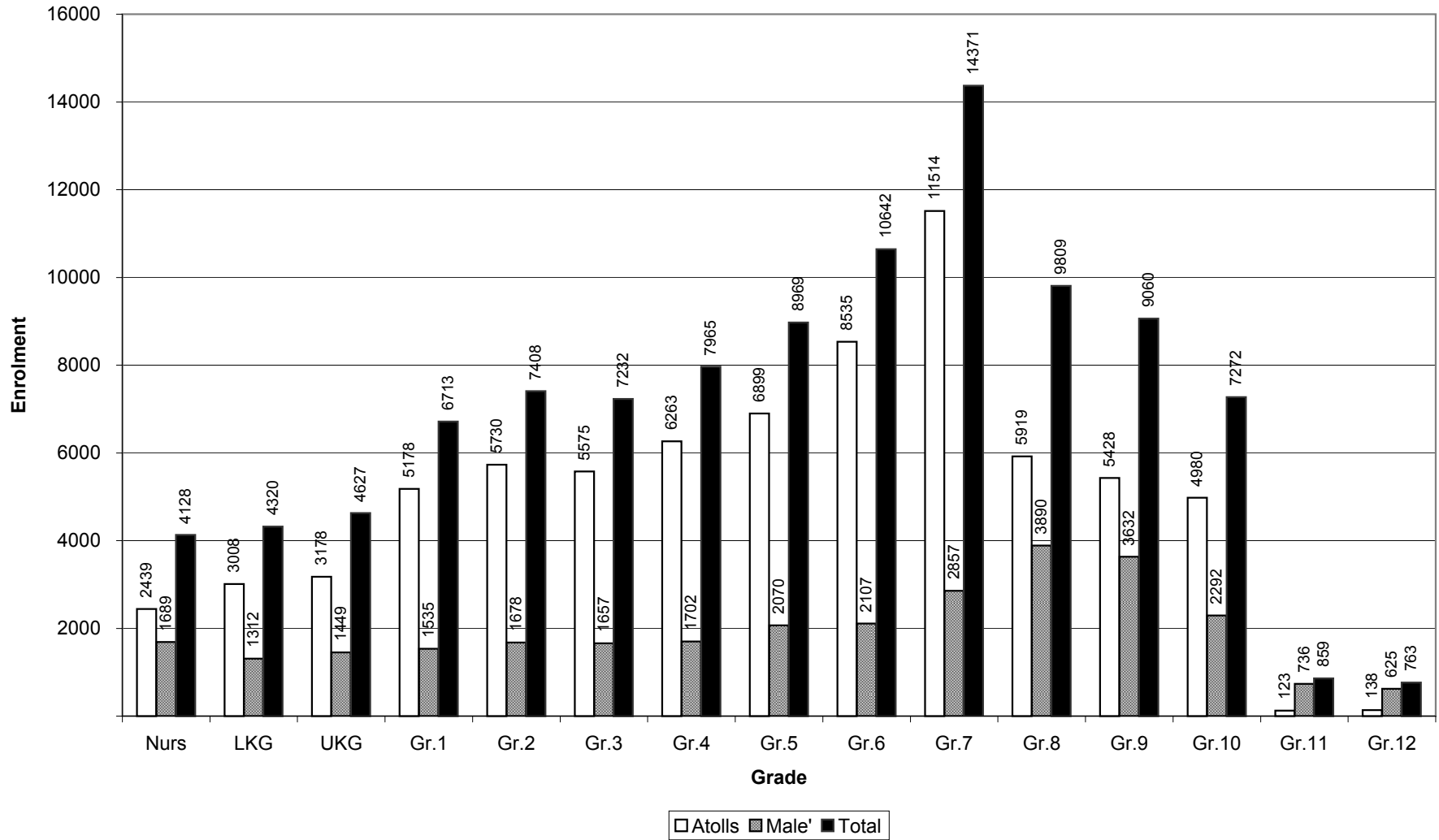


ދިވެހިސަރުކާރުގެ ގެޒެޓް ގައި ބަޔާންކޮށްފައިވާ ގޮތުން

ENROLMENT IN MALE' AND ATOLLS BY GRADE AND GENDER
(MARCH 2004)

Name of Atoll	NURS		LKG		UKG		GR. 1		GR. 2		GR. 3		GR. 4		GR. 5		GR. 6		GR. 7		GR. 8		GR. 9		GR. 10		GR. 11		GR. 12		Special		SUBTOTAL		TOTAL	% National
	F	M	F	M	F	M	F	M	F	M	F	M	F	M	F	M	F	M	F	M	F	M	F	M	F	M	F	M	F	M	F	M	F	M	Total	
Haa Alifu	104	67	142	130	147	133	171	203	202	223	213	193	217	253	261	303	316	391	468	518	206	189	223	170	199	167							2869	2940	5809	5.57
Haa Dhaalu	119	125	135	169	157	173	209	243	266	262	245	269	250	289	303	322	325	331	642	722	222	239	184	174	152	108	2	12	14	14			3225	3452	6677	6.41
Shaviyani	43	40	23	20	28	21	161	190	153	206	172	157	179	192	192	193	262	290	301	348	223	251	222	236	230	209							2189	2353	4542	4.36
Noonu	79	66	65	63	85	81	142	155	162	174	159	179	192	233	178	235	266	288	333	352	181	158	160	126	128	108							2130	2218	4348	4.17
Raa	98	100	86	102	120	121	217	227	230	250	232	229	235	263	327	362	341	441	428	438	264	243	246	274	267	215							3091	3265	6356	6.10
Baa	33	40	79	98	70	101	131	127	124	143	105	135	126	156	122	163	186	249	265	309	139	156	162	187	144	160	9	18	3	35			1698	2077	3775	3.62
Lhaviyani	66	68	78	72	63	69	115	109	108	123	116	111	125	140	134	159	190	219	240	287	96	97	99	87	127	99							1557	1640	3197	3.07
Kaafu	69	78	100	120	102	84	96	119	124	125	102	130	123	153	130	167	141	194	231	264	79	73	60	57	68	56							1425	1620	3045	2.92
Alifu Alifu	23	21	30	22	28	32	54	81	69	83	71	73	66	77	48	79	89	114	106	140	48	49	57	31	28	26							717	828	1545	1.48
Alifu Dhaalu	61	57	38	43	29	49	102	105	93	112	98	93	98	108	89	111	143	178	203	264	109	108	106	90	94	106							1263	1424	2687	2.58
Vaavu	3	2	2	1	1		14	15	20	24	13	22	18	18	22	24	34	35	35	47	23	37	23	23	21	26							229	274	503	0.48
Meemu	10	26	17	23	19	19	57	58	55	66	55	60	79	79	84	78	109	93	140	163	78	78	81	73	69	75							853	891	1744	1.67
Faafu	41	41	26	34	33	36	54	53	57	65	69	75	56	57	70	76	77	112	125	106	63	56	67	58	45	46							783	815	1598	1.53
Dhaalu	12	20	12	18	13	15	69	75	76	83	76	81	73	83	80	100	102	141	140	148	90	125	83	81	52	60							878	1030	1908	1.83
Thaa	58	62	83	69	72	86	108	121	133	155	146	143	130	166	145	196	174	230	284	300	138	143	153	152	131	146							1755	1969	3724	3.57
Laamu	41	27	84	68	97	84	146	176	192	187	189	194	194	229	229	269	244	304	351	393	158	167	161	170	194	189							2280	2457	4737	4.55
Gaafu Alifu	47	35	77	86	76	90	124	149	147	142	140	147	150	166	151	161	173	217	216	232	111	116	69	57	81	97							1562	1695	3257	3.13
Gaafu Dhaalu	100	114	117	128	142	134	144	157	194	202	169	189	218	198	226	201	259	291	294	327	213	194	164	185	195	164							2435	2484	4919	4.72
Gnaviyani	50	55	80	81	81	89	124	123	93	108	102	107	150	158	142	147	137	174	209	253	172	115	89	77	140	104							1569	1591	3160	3.03
Seenu	157	181	186	201	211	187	213	241	251	248	263	253	286	280	283	337	300	375	415	477	386	326	385	326	252	202	48	34	48	24			3684	3692	7376	7.08
Male'	860	829	647	665	702	747	782	753	840	838	798	859	829	873	978	1092	1042	1065	1481	1376	2064	1826	2094	1538	1328	964	338	398	303	322	31	45	15117	14190	29307	28.12
TOTAL	2074	2054	2107	2213	2276	2351	3233	3480	3589	3819	3533	3699	3794	4171	4194	4775	4910	5732	6907	7464	5063	4746	4888	4172	3945	3327	397	462	368	395	31	45	51309	52905	104214	100.00

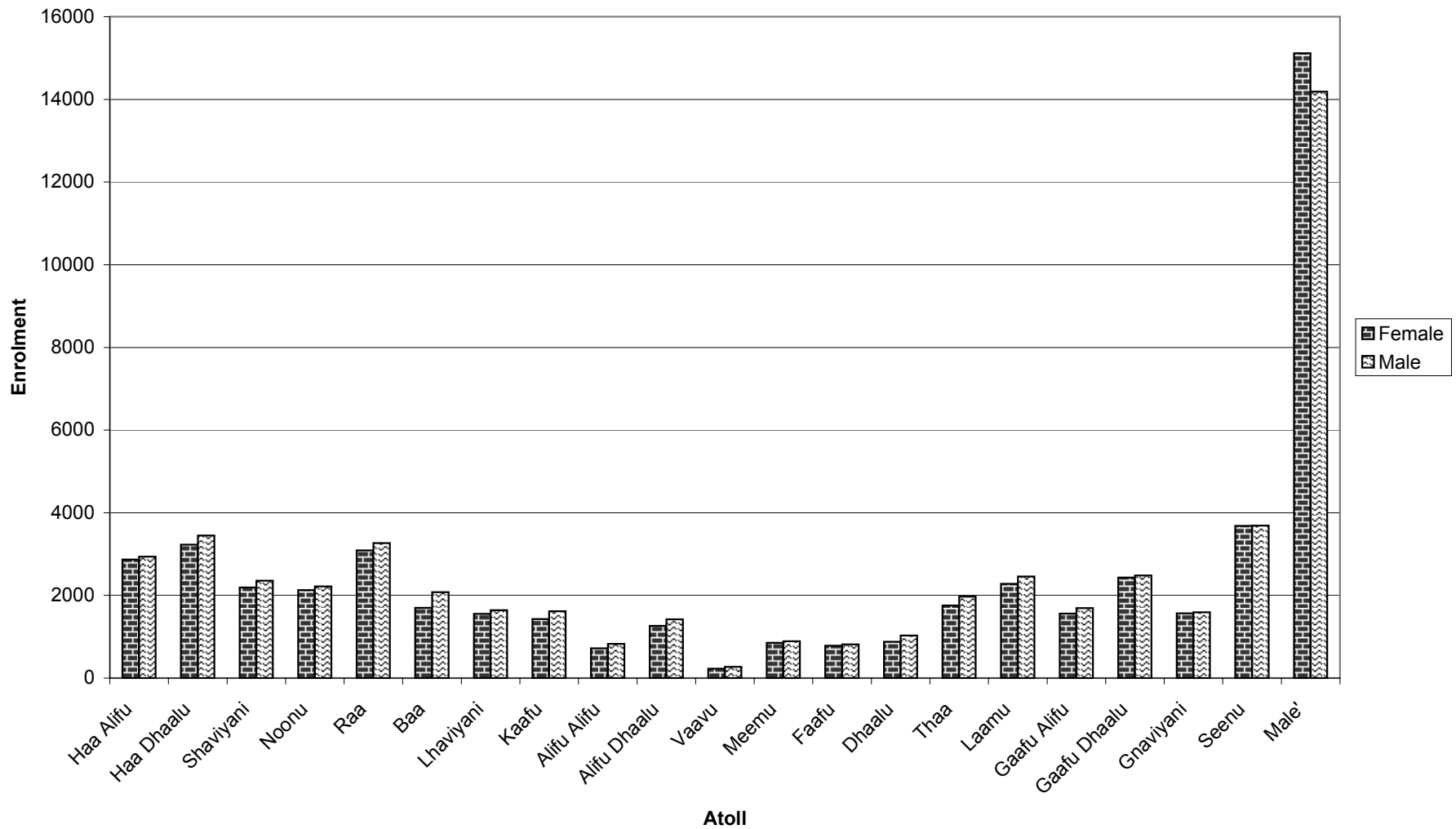
TOTAL ENROLMENT IN MALE' AND ATOLLS BY GRADE
(MARCH 2004)



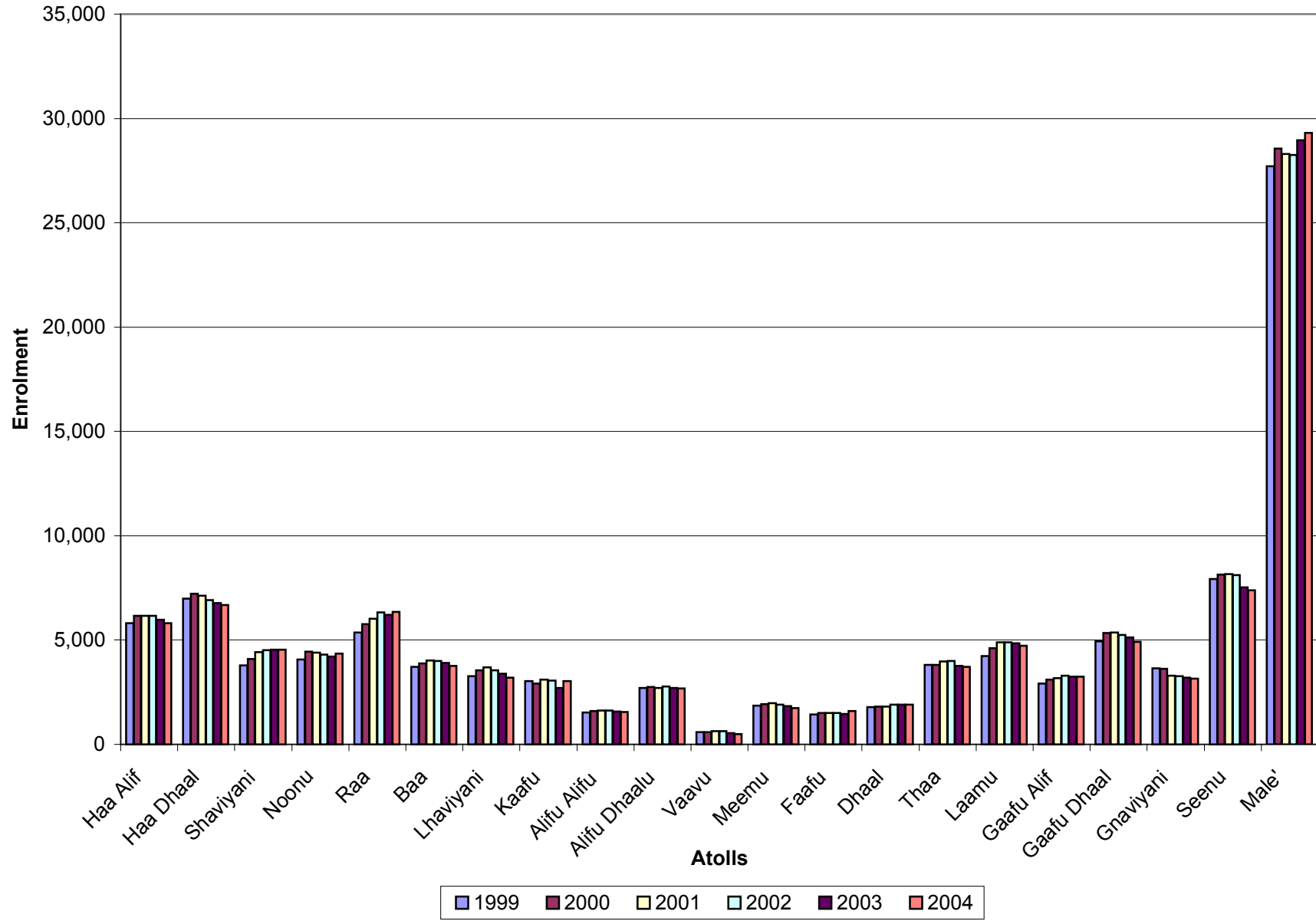
ދިވެހިރާއްޖޭގެ ބޭރުގެ ރާއްޖޭގެ ރައްދުކުރުމަށް ބޭނުންކުރާ ފަރާތްތަކުގެ ވަނަ ބަޔާން
 ENROLMENT IN MALE' AND ATOLLS BY GENDER
 (MARCH 2004)

Name of Atoll	Female	Male	Total	% Female	% Male	% Total
Haa Alifu	2869	2940	5809	49.39	50.61	5.57
Haa Dhaalu	3225	3452	6677	48.30	51.70	6.41
Shaviyani	2189	2353	4542	48.19	51.81	4.36
Noonu	2130	2218	4348	48.99	51.01	4.17
Raa	3091	3265	6356	48.63	51.37	6.10
Baa	1698	2077	3775	44.98	55.02	3.62
Lhaviyani	1557	1640	3197	48.70	51.30	3.07
Kaafu	1425	1620	3045	46.80	53.20	2.92
Alifu Alifu	717	828	1545	46.41	53.59	1.48
Alifu Dhaalu	1263	1424	2687	47.00	53.00	2.58
Vaavu	229	274	503	45.53	54.47	0.48
Meemu	853	891	1744	48.91	51.09	1.67
Faafu	783	815	1598	49.00	51.00	1.53
Dhaalu	878	1030	1908	46.02	53.98	1.83
Thaa	1755	1969	3724	47.13	52.87	3.57
Laamu	2280	2457	4737	48.13	51.87	4.55
Gaafu Alifu	1562	1695	3257	47.96	52.04	3.13
Gaafu Dhaalu	2435	2484	4919	49.50	50.50	4.72
Gnaviyani	1569	1591	3160	49.65	50.35	3.03
Seenu	3684	3692	7376	49.95	50.05	7.08
Male'	15117	14190	29307	51.58	48.42	28.12
TOTAL	51309	52905	104214	49.23	50.77	100.00

ރާއްޖޭގެ ސަރުކާރުގެ ގެޒެޓްކުރި ޖަނަވަރުގެ ޖަލްސާއިން ޖަނަވަރުގެ ޖަލްސާއިން ޖަނަވަރުގެ ޖަލްސާއިން
 ENROLMENT IN MALE' AND ATOLLS BY GENDER
 (MARCH 2004)



ދިވެހިރާއްޖޭގެ ސަރުކާރުގެ ގެޒެޓް ގައި ބަޔާންކޮށްފައިވާ ގޮތުގައި
 ENROLMENT TRENDS BY MALE' AND ATOLLS
 (1999 - 2004)



ދިވެހިރާއްޖޭގެ ޖުމްހޫރިއްޔާ ގުޅިގެން ސަރުކާރުގެ ޖަލުސާލަތުގެ ދަށުން ހިންގާ ސަރުކާރުގެ ޖަލުސާލަތުގެ ދަށުން
 SCHOOLS' ENROLMENTS IN HAA ALIFU ATOLL BY GRADE AND GENDER
 (MARCH 2004)

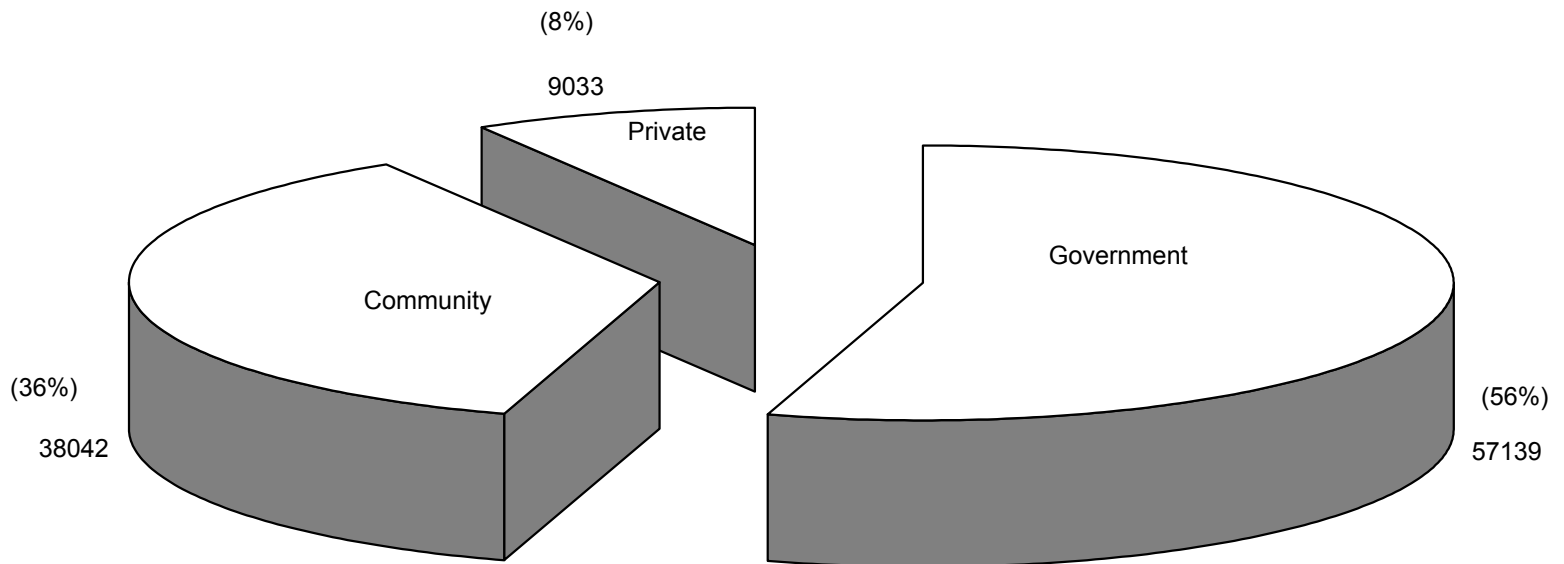
SCHOOL	Type	NURS		LKG		UKG		GR. 1		GR. 2		GR. 3		GR. 4		GR. 5		GR. 6		GR. 7		GR. 8		GR. 9		GR. 10		GR. 11		GR. 12		Special		SUBTOTAL		TOTAL	
		F	M	F	M	F	M	F	M	F	M	F	M	F	M	F	M	F	M	F	M	F	M	F	M	F	M	F	M	F	M	F	M				
HA. ATHOLHU MADARSA	G							14	30	25	38	52	30	34	33	41	49	52	61	115	118	38	34	56	43	58	55							485	491	976	
HA. ATHOLHU THAULEEMEE MARUKAZU	G							33	28	36	41	33	21	33	47	41	49	48	67	92	134	63	51	79	46	74	45							532	529	1061	
MADHRASATHUL SULTHAAN MOHAMED THAKURUFAANUL AUZAM	G							6	6	9	6	12	11	8	7	16	13	7	15	11	8													69	66	135	
MADHARSATHUL AMEEN	G			4	1	1	5	3	1	4				1	1	2	4	2	2	1	4													12	24	36	
BAARASHU SCHOOL	C							17	25	19	20	16	24	25	28	30	54	31	39	29	25	20	23											187	238	425	
BERINMADHOO SCHOOL	C					4		3	2	3	2	1	3	1	1	2																		12	10	22	
IHAVANDHOO SCHOOL	C							27	36	34	33	27	46	39	47	35	26	70	80	98	87	55	51	55	60	47	47							487	513	1000	
MAARANDHOO SCHOOL	C					7	5	11	6	5	10	9	4	13	10	3	10	8	15	4	8													60	68	128	
GHAZEE MOHAMED PRESCHOOL	C	33	17	24	26	33	33																										90	76	166		
MADHRASATHUL SOBAH	C							14	9	8	12	11	8	6	11	9	10	7	14	14	30													69	94	163	
MADHRASATHUL SHAHEEDHU ALI THAKURUFAAN	C							7	4	7	9	6	7	7	10	11	10	1	8	8	8													47	56	103	
MADHRASATHUL SHEIKH IBRAHIM	C							16	23	25	17	16	20	19	20	27	33	23	35	43	47	30	30	33	21	20	20							252	266	518	
MULHADHOO SCHOOL	C	2	4	3	2	4	1	3	4	4	2	3	3	4	3	6	6	9	2	4	4													42	31	73	
MURADHOO SCHOOL	C							4	2	4	8	6	2	7	9	11	11	28	22	19	11														79	65	144
THURAAKUNU SCHOOL	C			5	8	5	4	6	8	12	3	6	4	8	6	7	8	6	12	6	11													61	64	125	
ULIGAMU SCHOOL	C							2	3	1	2	7	3	2	11	5	5	12	6	10	5													39	35	74	
VASHAFARU SCHOOL	C	9	5	12	4	9	11	11	13	10	15	7	9	8	9	16	13	12	13	14	18													108	110	218	
LILY PRE-SCHOOL	C	10	9	17	14	11	10																											38	33	71	
AHADHIYYA PRE-SCHOOL	C			9	5	5	5																											14	10	24	
BAARASHU PRE-SCHOOL	C			11	10	11	7																												22	17	39
WAFU PRE-SCHOOL	P	7	2	19	19	23	19																												49	40	89
UMAR MOHAMED PRE SCHOOL	P	5	7	10	13	10	8																												25	28	53
DHOONTHUNDI NURSERY CLASS	P	18	10																																18	10	28
ADAM SALEEM HAN'DHAANE PRE-SCHOOL	P	12	7	17	23	19	16																												48	46	94
ETHUMAA PRE-SCHOOL	P	4	4	8	2	3	6																												15	12	27
AHMED KHATHEEB MEMORIAL PRE-SCHOOL	P	4	2	3	3	2	3																												9	8	17
TOTAL		26	104	67	142	130	147	133	171	203	202	223	213	193	217	253	261	303	316	391	468	518	206	189	223	170	199	167						2869	2940	5809	

G - Government, C - Community, P - Private

ދިވެހިރާއްޖޭގެ ސަރުކާރުގެ ގެޒެޓް ގައި ބަޔާންކުރި ގޮތުގައި ދިވެހިރާއްޖޭގެ ސަރުކާރުގެ ގެޒެޓް ގައި ބަޔާންކުރި ގޮތުގައި
 SCHOOLS' ENROLMENTS IN MEEMU ATOLL BY GRADE AND GENDER
 (MARCH 2004)

SCHOOL	Type	NURS		LKG		UKG		GR. 1		GR. 2		GR. 3		GR. 4		GR. 5		GR. 6		GR. 7		GR. 8		GR. 9		GR. 10		GR. 11		GR. 12		Special		SUBTOTAL		TOTAL
		F	M	F	M	F	M	F	M	F	M	F	M	F	M	F	M	F	M	F	M	F	M	F	M	F	M	F	M	F	M	F	M			
M. ATHOLHU MADHARUSAA	G							8	12	9	10	3	15	17	17	17	13	22	27	37	31	19	22	14	18	18	11							164	176	340
M. ATHOLHU THAULEEMEE MARUKAZU	G							7	10	8	11	12	9	12	7	8	11	18	10	25	32	26	11	15	12	12	14							143	127	270
DHIGGARU SCHOOL	C							11	6	6	10	11	13	11	16	17	12	17	19	27	33	22	36	31	26	18	18							171	189	360
MADIFUSHI SCHOOL	C		4					1		1	1			2	3																		4	8	12	
MADUVAREE SCHOOL	C							7	6	4	8	5	4	6	5	6	3	11	7	18	24												57	57	114	
MULAKU SCHOOL	C							16	17	23	20	14	13	22	21	30	23	33	25	32	43	11	9	21	17	21	32							223	220	443
NAALAAFUSHI SCHOOL	C	7	4					2	3	2	2	5	3	5	5	2	8	5	4														28	29	57	
RAIMANDHOO SCHOOL	C							2	2		1	2	2	3	2	3	6	3	1	1													14	14	28	
VEYVASHU	C			3	2	2	4	3	2	2	3	3	1	1	3	1	2																15	17	32	
AAINAA PRE-SCHOOL	P		9	8	12	12	9																										20	30	50	
VANI THUTHHUKUDHINGE THAULEEMDHEY CLASS	P	3	9	6	9	5	6																										14	24	38	

وزارت معارف و اوقاف و صنایع مستظرفه
DISTRIBUTION OF ENROLMENT BY TYPE OF SCHOOLS
(MARCH 2004)



የኢትዮጵያ ጥቅም ስራ ሚኒስቴር
የትምህርትና የሥነ-ምግባር ሚኒስቴር

FREQUENCY DISTRIBUTION OF SCHOOLS BY SIZE OF ENROLMENT
(MARCH 2004)

Enrolment Category	No. of schools	Percentage	Cumulative total	Cumulative Percentage
Schools with 100 or less students	129	38.28	129	38.28
Schools with 101 - 200 students	72	21.36	201	59.64
Schools with 201 - 300 students	34	10.09	235	69.73
Schools with 301 - 400 students	23	6.82	258	76.56
Schools with 401 - 500 students	23	6.82	281	83.38
Schools with 501 - 600 students	14	4.15	295	87.54
Schools with 601 - 700 students	6	1.78	301	89.32
Schools with 701 - 800 students	7	2.08	308	91.39
Schools with 801 - 900 students	0	0.00	308	91.39
Schools with 901 - 1000 students	2	0.59	310	91.99
Schools with 1001 - 1100 students	6	1.78	316	93.77
Schools with 1101 - 1200 students	3	0.89	319	94.66
Schools with 1201 - 1300 students	3	0.89	322	95.55
Schools with 1301 - 1400 students	0	0.00	322	95.55
Schools with 1401 - 1500 students	0	0.00	322	95.55
Schools with 1501 - 1600 students	1	0.30	323	95.85
Schools with 1601 - 1700 students	5	1.48	328	97.33
Schools with 1701 - 1800 students	2	0.59	330	97.92
Schools with 1801 - 1900 students	0	0.00	330	97.92
Schools with 1901 - 2000 students	2	0.59	332	98.52
Schools with 2001 - 2100 students	2	0.59	334	99.11
Schools with 2101 - 2200 students	1	0.30	335	99.41
Schools with 2201 - 2300 students	0	0.00	335	99.41
Schools with 2301 - 2400 students	1	0.30	336	99.70
Schools with 2401 - 2500 students	0	0.00	336	99.70
Schools with 2501 - 2600 students	0	0.00	336	99.70
Schools with 2601 - 2700 students	1	0.30	337	100.00
Schools with 2701 - 2800 students	0	0.00	337	100.00
Schools with 2801 - 2900 students	0	0.00	337	100.00
Schools with 2901 - 3000 students	0	0.00	337	100.00
Schools with 3001 - 3100 students	0	0.00	337	100.00
Schools with 3101 - 3200 students	0	0.00	337	100.00
Schools with 3201 - 3300 students	0	0.00	337	100.00
Schools with 3301 - 3400 students	0	0.00	337	100.00
Schools with 3401 - 3500 students	0	0.00	337	100.00
Schools with 3501 or more students	0	0.00	337	100.00
TOTAL	337	100.00		

(މިއަހަރުގެ މާރޅު މަހުގައި ދިވެހިރާއްޖޭގެ ފަރާތްތަކުގެ ފަރާތުން ދަތުރުކުރާ ފަރާތްތަކުގެ އަދަދު)

NUMBER OF PRIVATE SCHOOLS AND ENROLMENTS BY MALE' AND ATOLLS AND LEVEL
(MARCH 2004)

PRIVATE SCHOOLS

Atoll	Pre-Primary Enrolment				Primary Enrolment				Lower Secondary Enrolment				Higher Secondary Enrolment			
	No.	Female	Male	Total	No.	Female	Male	Total	No.	Female	Male	Total	No.	Female	Male	Total
Haa Alifu	6	164	144	308												
Haa Dhaalu	3	111	114	225												
Shaviyani	2	30	25	55	1	71	73	144	1	35	30	65				
Noonu	4	56	73	129												
Raa	5	112	137	249	1	45	51	96								
Baa	3	90	132	222												
Lhaviyani	1	54	51	105												
Kaafu	4	94	125	219												
Alifu Alifu	5	69	67	136												
Alifu Dhaalu																
Vaavu																
Meemu	2	34	54	88												
Faafu	1	29	41	70												
Dhaalu																
Thaa	2	86	83	169												
Laamu	2	54	51	105												
Gaafu Alifu	6	160	157	317												
Gaafu Dhaalu	14	329	346	675		7	9	16	1	91	137	228				
Gnaviyani	4	211	225	436												
Seenu	8	554	569	1123	1	60	77	137	1	108	138	246				
Male'	3	161	191	352	3	294	303	597	3	1501	958	2459	1	25	37	62
TOTAL	75	2398	2585	4983	6	477	513	990	6	1735	1263	2998	1	25	37	62

(2004 මාර්ଚ් 31 දින) දින 31 දක්වා පාසල සංඛ්‍යාව සහ ශිෂ්‍ය සංඛ්‍යාව

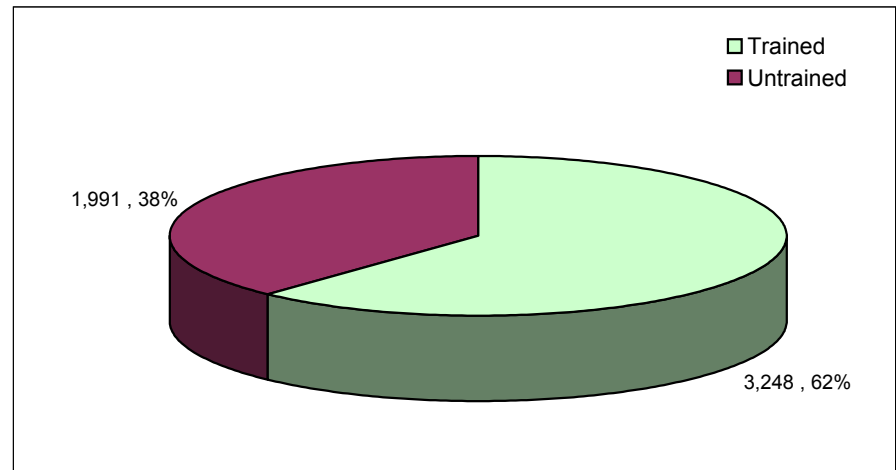
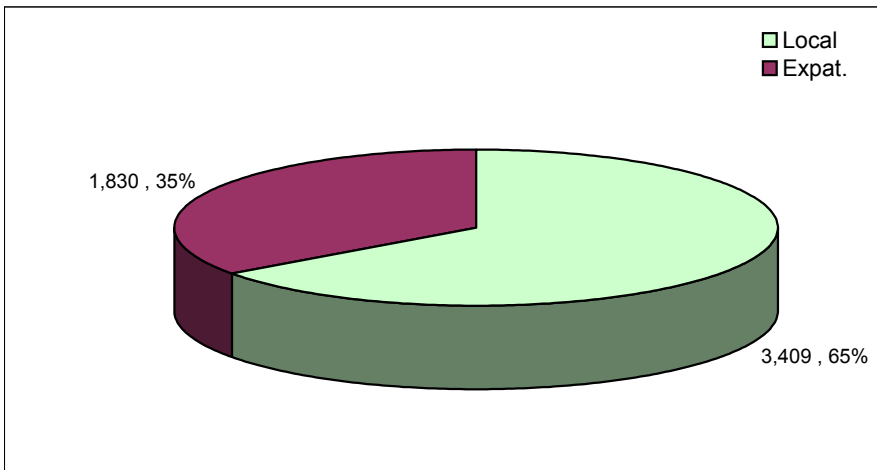
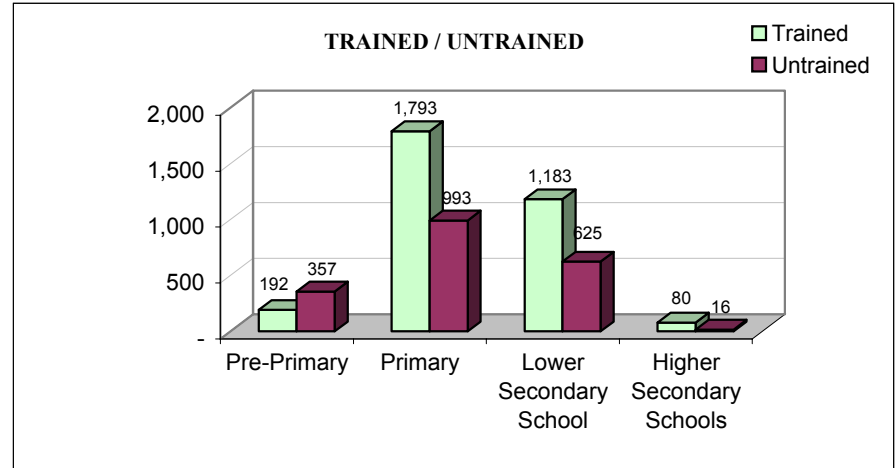
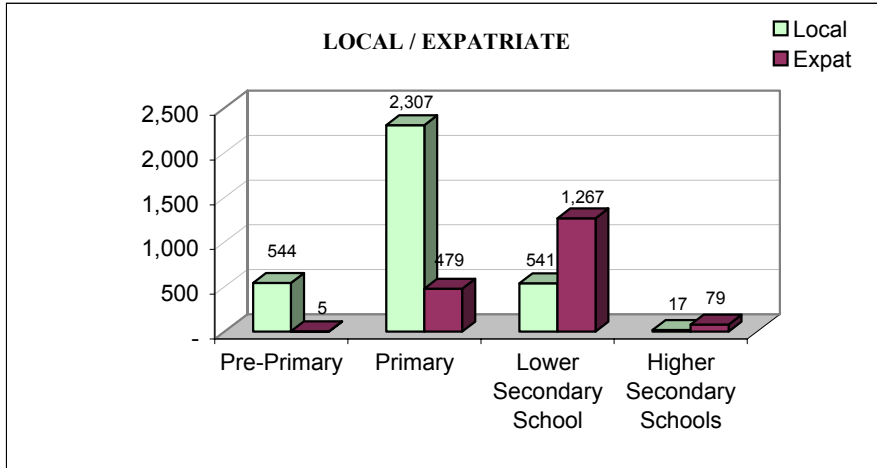
NUMBER OF SCHOOLS AND ENROLMENT BY MALE' AND ATOLLS AND LEVEL
(MARCH 2004)

GOVERNMENT, COMMUNITY AND PRIVATE SCHOOLS

Atoll	Pre-Primary Enrolment				Primary Enrolment				Lower Secondary Enrolment				Higher Secondary Enrolment			
	No.	Female	Male	Total	No.	Female	Male	Total	No.	Female	Male	Total	No.	Female	Male	Total
Haa Alifu	16	393	330	723	16	1848	2084	3932	5	628	526	1154				
Haa Dhaalu	13	411	467	878	17	2240	2438	4678	6	558	521	1079	1	16	26	42
Shaviyani	4	94	81	175	16	1420	1576	2996	9	675	696	1371				
Noonu	9	229	210	439	13	1432	1616	3048	6	469	392	861				
Raa	10	304	323	627	16	2010	2210	4220	10	777	732	1509				
Baa	10	182	239	421	13	1059	1282	2341	6	445	503	948	1	12	53	65
Lhaviyani	4	207	209	416	5	1028	1148	2176	3	322	283	605				
Kaafu	10	271	282	553	10	947	1152	2099	6	207	186	393				
Alifu Alifu	6	81	75	156	8	503	647	1150	3	133	106	239				
Alifu Dhaalu	6	128	149	277	10	826	971	1797	6	309	304	613				
Vaavu	2	6	3	9	5	156	185	341	3	67	86	153				
Meemu	6	46	68	114	9	579	597	1176	4	228	226	454				
Faafu	4	100	111	211	5	508	544	1052	4	175	160	335				
Dhaalu	2	37	53	90	8	616	711	1327	6	225	266	491				
Thaa	9	213	217	430	13	1120	1311	2431	5	422	441	863				
Laamu	10	222	179	401	16	1545	1752	3297	6	513	526	1039				
Gaafu Alifu	8	200	211	411	10	1101	1214	2315	6	261	270	531				
Gaafu Dhaalu	16	359	376	735	9	1504	1565	3069	6	572	543	1115				
Gnaviyani	4	211	225	436	3	957	1070	2027	1	401	296	697				
Seenu	8	554	569	1123	8	2011	2211	4222	6	1023	854	1877	1	96	58	154
Male'	7	2209	2241	4450	15	6750	6856	13606	10	5486	4328	9814	2	641	720	1361
TOTAL	164	6457	6618	13075	225	30160	33140	63300	117	13896	12245	26141	5	765	857	1622

تعداد معلمات و معلمي التعليم في الكويت (مارس 2004)

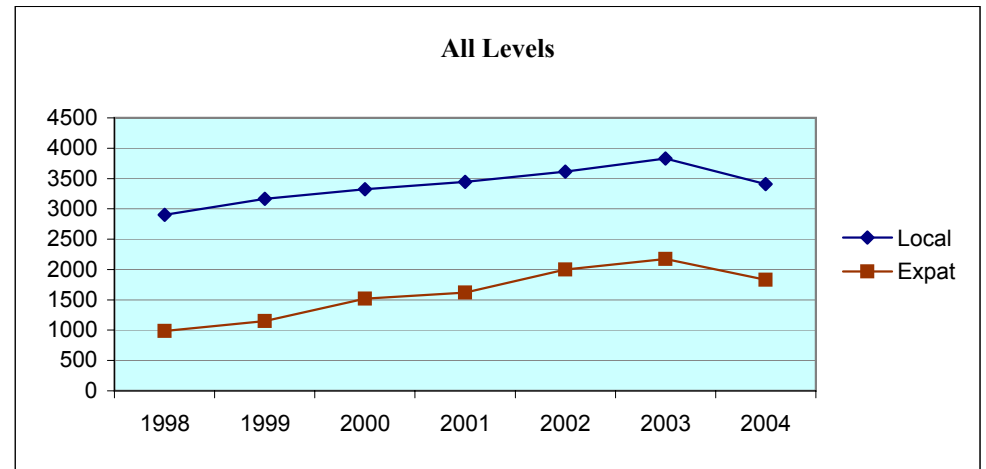
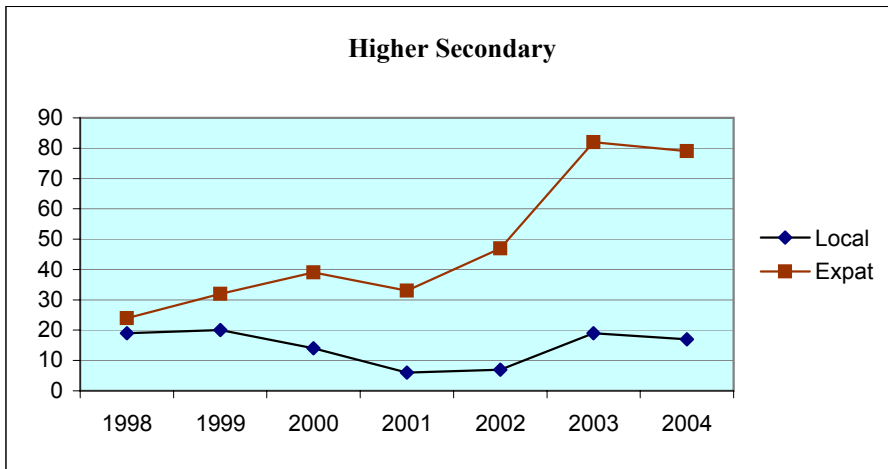
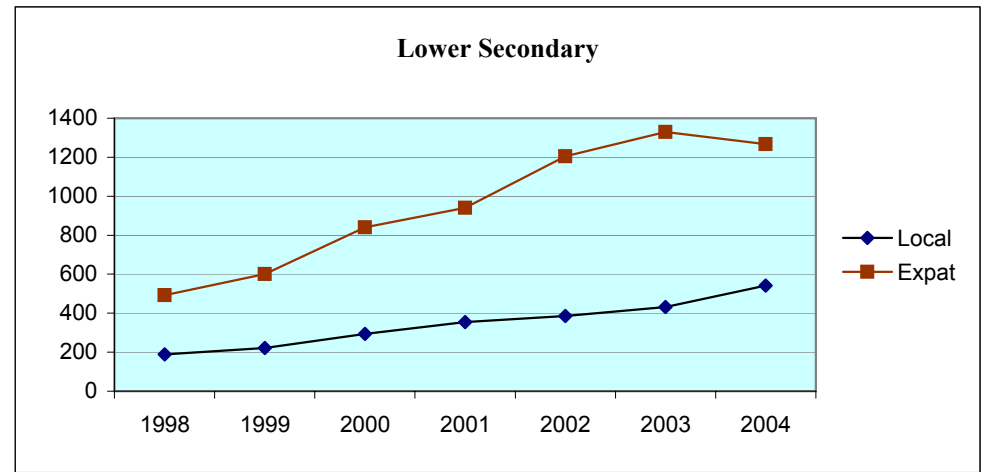
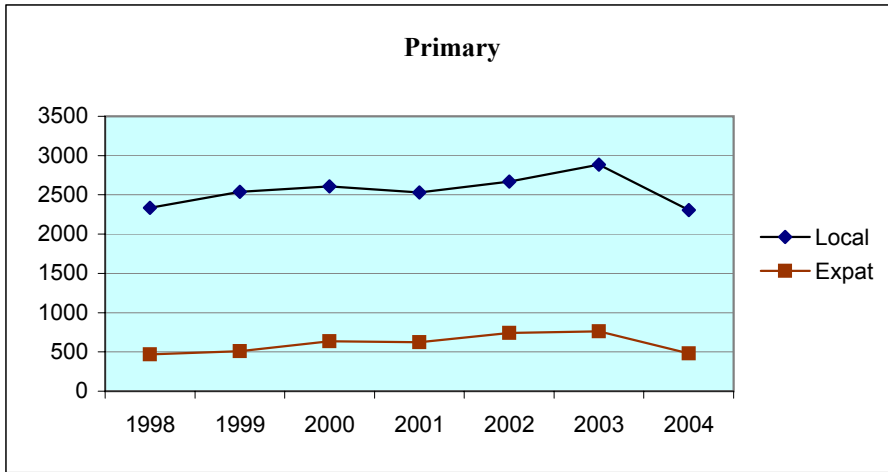
TEACHERS SERVING AT DIFFERENT LEVELS
(MARCH 2004)



بھارتیہ اعلیٰ و اوسط ثانوی اسکولوں میں اساتذہ کی رجحان (محلی/مغترب)

TEACHERS' TREND (LOCAL AND EXPATRIATE)

1998 - 2004



ދިވެހިސަރުކާރުގެ ގެޒެޓް ގައި ބަޔާންކޮށްފައިވާ ގޮތުގައި 2004 ވަނަ އަހަރުގެ މާރޗް ގައި ދިވެހިސަރުކާރުގެ ގެޒެޓް ގައި ބަޔާންކޮށްފައިވާ ގޮތުގައި

TEACHERS SERVING IN MALE' AND ATOLLS BY JOB CATEGORIES
(MARCH 2004)

Locality	Permanent																Temporary				Total												
	Trained								Untrained																								
	Graduate				Non-Graduate				Graduate				Non-Graduate																				
	Local		Expat		Local		Expat		Local		Expat		Local		Expat		Local		Expat		Local & Expat												
F	M	F	M	F	M	F	M	F	M	F	M	F	M	F	M	F	M	F	M	F	M	F	M	F	M	F	M	F	M	F	M	F	M
Republic	45	59	347	557	1,405	547	111	177	7	38	152	308	260	118	26	60	666	264	29	63	2,383	1,026	665	1,165	5,239								
Male'	20	18	122	145	496	80	53	40	5	16	34	68	59	12	3	1	43	44	18	33	623	170	230	287	1,310								
Atolls	25	41	225	412	909	467	58	137	2	22	118	240	201	106	23	59	623	220	11	30	1,760	856	435	878	3,929								
Haa Alifu	-	-	18	23	63	33	5	15	-	-	20	23	18	6	1	-	59	16	-	-	140	55	44	61	300								
Haa Dhaalu	1	2	23	46	82	34	3	4	-	-	6	13	6	4	-	-	57	14	1	-	146	54	33	63	296								
Shaviyani	-	3	6	26	36	53	4	9	-	-	10	30	1	6	2	11	30	22	1	1	67	84	23	77	251								
Noonu	-	1	5	4	64	27	-	2	-	3	8	19	11	5	4	12	19	7	1	4	94	43	18	41	196								
Raa	-	1	17	42	32	34	3	12	-	-	7	29	10	14	5	12	81	30	1	1	123	79	33	96	331								
Baa	-	2	28	45	69	36	-	2	-	1	5	8	12	10	-	-	21	5	-	2	102	54	33	57	246								
Lhaviyani	13	20	8	27	53	14	-	1	-	-	-	-	4	6	-	-	30	6	-	1	100	46	8	29	183								
Kaafu	-	-	9	7	33	33	2	7	1	5	5	8	8	4	-	-	39	9	-	-	81	51	16	22	170								
Alifu Alifu	-	-	3	8	16	9	1	3	-	-	-	2	10	5	3	8	22	5	1	1	48	19	8	22	97								
Alifu Dhaalu	-	1	7	6	35	10	2	-	-	-	2	16	7	1	1	-	25	7	1	7	67	19	13	29	128								
Vaavu	1	-	3	2	9	2	-	-	-	-	2	4	5	-	-	5	7	6	-	-	22	8	5	11	46								
Meemu	-	-	9	14	27	13	1	1	-	4	1	3	4	8	-	-	12	12	-	1	43	37	11	19	110								
Faafu	-	1	7	11	13	15	1	-	-	-	14	11	2	1	-	-	10	2	-	-	25	19	22	22	88								
Dhaalu	-	1	4	9	20	11	3	16	-	1	2	1	11	7	-	-	12	3	1	6	43	23	10	32	108								
Thaa	-	-	6	15	38	29	5	28	-	2	3	5	9	4	-	1	30	15	-	-	77	50	14	49	190								
Laamu	1	3	22	43	34	27	2	5	-	-	5	8	7	12	5	7	43	29	-	3	85	71	34	66	256								
Gaafu Alifu	-	-	-	3	37	22	-	4	-	-	4	16	11	3	-	-	17	7	2	2	65	32	6	25	128								
Gaafu Dhaalu	1	1	8	20	79	28	11	15	-	-	3	3	21	5	-	2	46	10	2	-	147	44	24	40	255								
Gnaviyani	2	3	10	18	74	17	2	2	-	-	5	12	15	2	-	-	12	-	-	-	103	22	17	32	174								
Seenu	6	2	32	43	95	20	13	11	1	6	16	29	29	3	2	1	51	15	-	1	182	46	63	85	376								

*This table does not include supervisors, assistant headmasters, headmasters, assistant principals and principals who may teach in addition to their administrative duties.
This table includes pre-primary teachers*

ސަލްޔާނާ ދިވެހިރާއްޖޭގެ ސަރުކާރުގެ ގެޒެޓް (2004 ވަނަ އަދަދު)

SCHOOLS, ENROLMENT AND TEACHERS BY MALE' AND ATOLLS
(MARCH 2004)

Locality	Schools		Students (Both Sexes)	Teachers			Student Teacher Ratio (Trained Teachers)
	Enrol <500	Enrol >=500		Total	Trained	Untrained	
Republic	261	57	104,214	5,239	3,248	1,991	32.09
Male'	5	16	29,307	1,310	974	336	30.09
Atolls	256	41	74,907	3,929	2,274	1,655	32.94
Haa Alifu	22	4	5,809	300	157	143	37.00
Haa Dhaalu	16	4	6,677	296	195	101	34.24
Shaviyani	15	3	4,542	251	137	114	33.15
Noonu	14	3	4,348	196	103	93	42.21
Raa	13	6	6,356	331	141	190	45.08
Baa	15	2	3,775	246	182	64	20.74
Lhaviyani	7	2	3,197	183	136	47	23.51
Kaafu	11	1	3,045	170	91	79	33.46
Alifu Alifu	13		1,545	97	40	57	38.63
Alifu Dhaalu	10	2	2,687	128	61	67	44.05
Vaavu	5		503	46	17	29	29.59
Meemu	10		1,744	110	65	45	26.83
Faafu	5		1,598	88	48	40	33.29
Dhaalu	9		1,908	108	64	44	29.81
Thaa	16	2	3,724	190	121	69	30.78
Laamu	15	3	4,737	256	137	119	34.58
Gaafu Alifu	14	1	3,257	128	66	62	49.35
Gaafu Dhaalu	23	2	4,919	255	163	92	30.18
Gnaviyani	5	2	3,160	174	128	46	24.69
Seenu	18	4	7,376	376	222	154	33.23

This table does not include supervisors, assistant headmasters, headmasters, assistant principals and principals who may teach in addition to their administrative duties.

This table includes pre-primary teachers