

MALDIVES MONETARY AUTHORITY

ECONOMIC UPDATE

NOVEMBER 2025

VOLUME 7 ISSUE 11



mma.gov.mv

About the Economic Update

Economic Update is a monthly publication produced by the Research Division of MMA presenting a quick overview of current developments in the Maldivian economy. It also includes a chart pack of global economic and financial indicators. The Economic Update will be posted on MMA's website at the end of each month. This Economic Update is based on the latest available data as at 26 November 2025.

Domestic Economic Developments

Real Economy

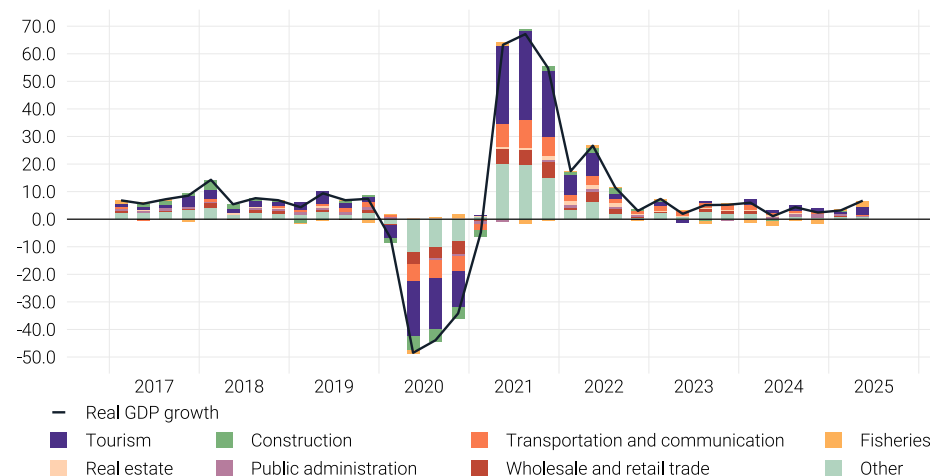
Gross Domestic Product

- According to the advance estimates of the Quarterly National Accounts (QNA) for Q2-2025 released by the Maldives Bureau of Statistics (MBS), real GDP grew by 6.7% in Q2-2025, compared to the corresponding quarter of 2024. This is an acceleration from the growth of 3.2% recorded in Q1-2025.
 - The annual growth in real GDP during Q2-2025 was mainly driven by the expansion in the tourism and fisheries sector. Growths were also observed in sectors such as human health and social work, manufacturing and arts, entertainment, recreation and other services. Additionally, real estate, financial services and transportation and communication sector registered growth during the quarter.

Annual GDP Growth Forecast

- According to the growth forecasts for October 2025¹, real GDP is projected to grow by 5.4% in 2025. Growth forecast for 2025 have been revised downwards, compared to the forecasts produced in October 2024. As per the revised estimates of real GDP released by the Maldives Bureau of Statistics in October 2025, following a growth of 4.9% in 2023, the annual real GDP is estimated to have grown in 2024 by 3.5%—2.0 percentage points lower than the estimate of October 2024. In 2024, real GDP growth was led primarily by the expansion of the tourism sector, together with positive contributions from public administration, real estate, and transportation and communication sectors.

Contribution to Real GDP Growth by Economic Sectors, 2017 - 2025
(annual percentage change, percentage point contribution)



Source: Maldives Bureau of Statistics

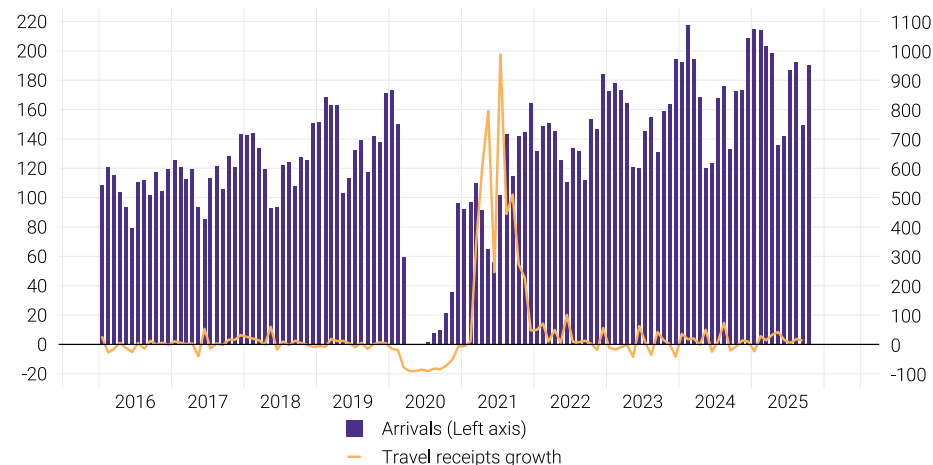
¹According to the growth forecast scenarios estimated jointly by the MMA and the Ministry of Finance and Planning.

Tourism

- In October 2025, total tourist arrivals stood at 190,445, registering an increase of 10% when compared with the corresponding month of 2024. Meanwhile, total tourist bednights rose by 5%, primarily owing to the increase in bednights of guesthouses. During the month, guesthouse bednights increased by 19%, while resort bednights increased by 2%.
 - The annual increase in tourist arrivals largely reflected robust arrivals from China and Russia. During the month, the highest number of tourist arrivals were recorded from Russia, China, Germany, the United Kingdom and India.
- The operational bed capacity of the tourism industry observed an annual increase of 3,490 beds in October 2025, while the occupancy rate remained broadly unchanged in October 2025, from 58% in October 2024.
- Overall, for the period January to October 2025, total tourist arrivals rose by 10% in annual terms, while total bednights increased by 2%. During the period, the average stay dropped to 6.9 days, from 7.5 days in the corresponding period of 2024.

Tourism, 2016 - 2025

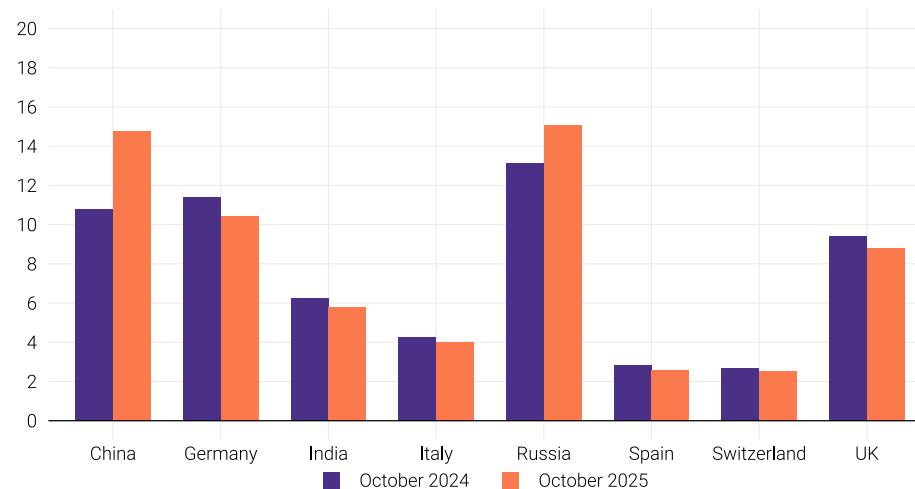
(thousands, annual percentage change)



Source: Ministry of Tourism and Environment
 Note: Tourism receipts available up to September 2025.

Shares of Key Inbound Markets

(percent)

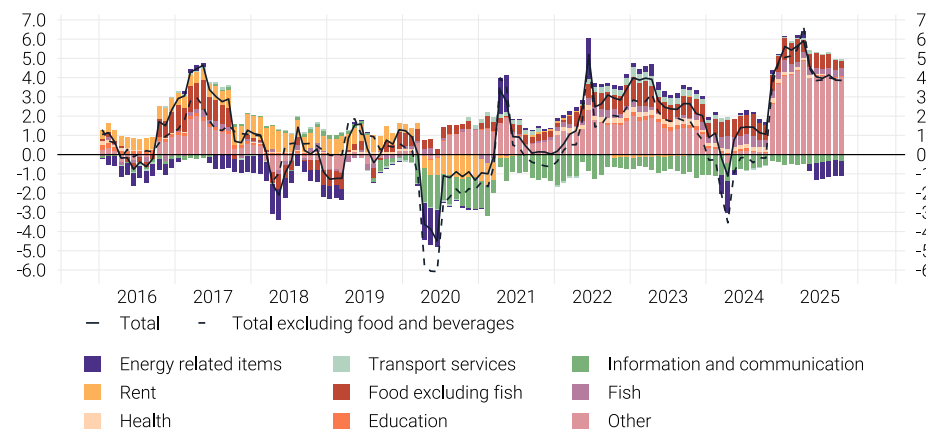


Source: Ministry of Tourism and Environment

Inflation

- The rate of inflation, as measured by the annual percentage change in the national CPI stood at 3.9% in October 2025, unchanged from September 2025.
 - The largest contribution to the annual rate of inflation during October 2025 came from tobacco (2.08 percentage points); fruits (0.40 percentage points); fish (0.37 percentage points); restaurants and cafés (0.33 percentage points); dairy products (0.12 percentage points); personal care appliances, articles and products (0.10 percentage points); motorcycles (-0.13 percentage points); mobile communication services (-0.20 percentage points); vegetables (-0.34 percentage points); and electricity (-0.74 percentage points).
- The monthly percentage change in the national CPI stood at -0.2% in October 2025, from -0.1% recorded in September 2025.
 - The largest contribution to the monthly rate of inflation came from fish (0.08 percentage points); furniture, furnishing and loose carpets (0.03 percentage points); mobile telephone equipment (0.03 percentage points); assistive products (0.02 percentage points); aracanut (0.01 percentage points); maintenance, repair and security services (-0.01 percentage points); garments (-0.02 percentage points); vegetables (-0.02 percentage points); electricity (-0.09 percentage points); and fruits (-0.24 percentage points).

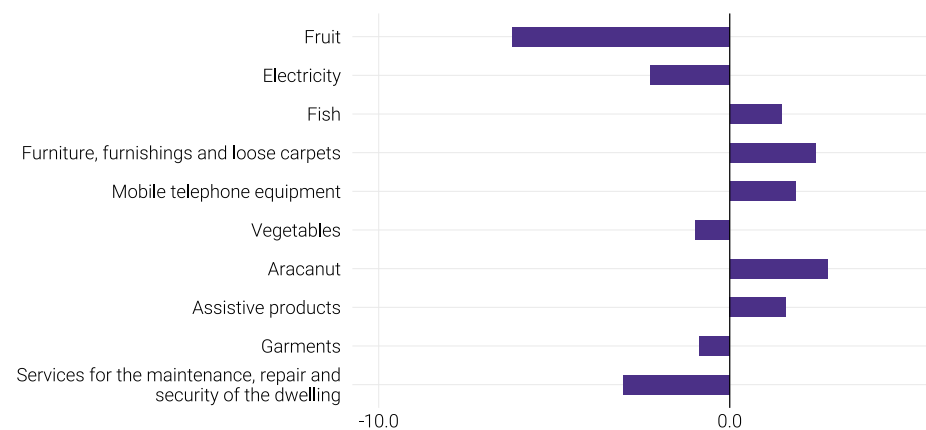
Contribution of Major Categories to CPI Inflation (National), 2016 - 2025
(annual percentage change, percentage point contribution)



Source: Maldives Bureau of Statistics

Note: Main categories in other are furnishing, personal care, restaurant and accomodation services, tobacco and araca nuts, and water supply.

Monthly Changes of Subcategories of CPI Inflation (National), October 2025
(monthly percentage change)



Source: Maldives Bureau of Statistics

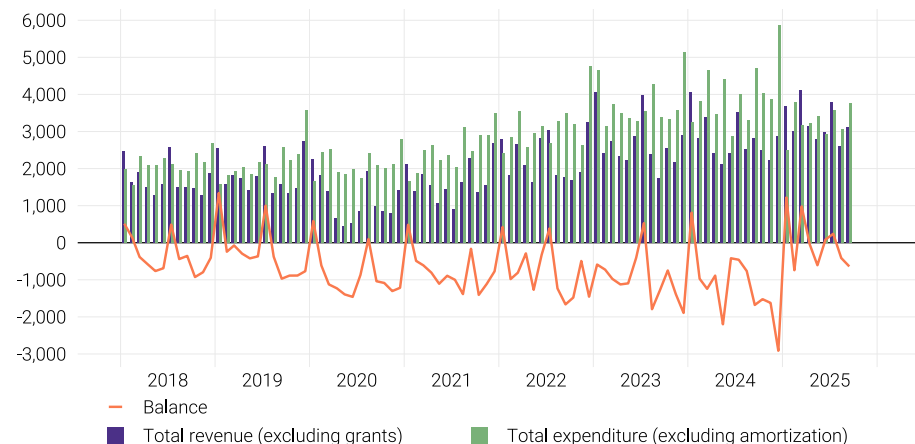
Note: Ordered by the size of the contribution.

Public Finance²

- Total revenue (excluding grants) observed an increase of MVR295.0 million (or 10%) in September 2025 when compared with September 2024, owing to the increase in both non-tax and tax revenue. As such, non-tax revenue increased by MVR158.8 million, while tax revenue increased by MVR101.2 million.
- Total expenditure (excluding amortisation) declined by MVR951.7 million (or 18%) in September 2025 when compared with September 2024, primarily stemming from the decline in capital expenditure, which decreased by MVR694.3 million. Meanwhile, recurrent expenditure also declined by MVR232.1 million in September 2025, when compared with September 2024.
- According to the latest available data, the stock of total government debt (excluding government guaranteed debt) amounted to MVR130.2 billion at the end of Q3-2025, a 2% increase from Q2-2025. Similarly, total government debt as a percentage of GDP rose to 112% at the end of Q3-2025, from 110% in Q2-2025.
 - During this period, the increase in government debt was primarily driven by domestic debt.

Government Revenue and Expenditure, 2018 - 2025

(millions of rufiyaa)

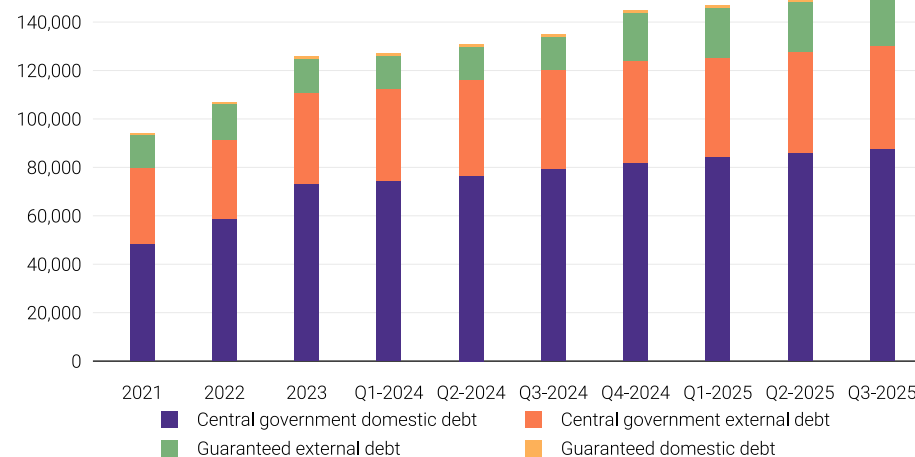


Source: Ministry of Finance and Planning

Note: Figures do not accord with the methodology of IMF's GFS Manual 1986.

Total Outstanding Stock of Public Debt, 2021 - 2025

(millions of rufiyaa)



Source: Ministry of Finance and Planning

²Government revenue and expenditure data as of 6 October 2025. These figures might vary due to ongoing data reconciliation.

Monetary Developments

Reserve Money

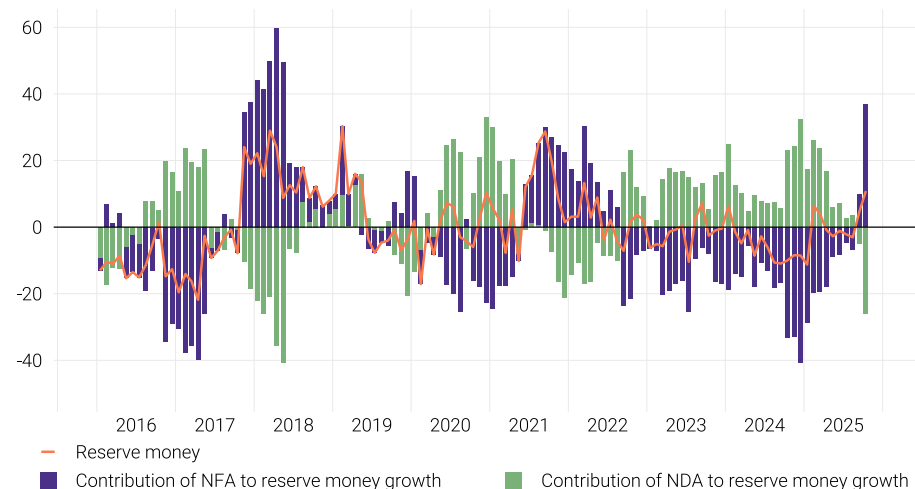
- Reserve money (M0) increased by 11% at the end of October 2025, following a 5% increase registered in September 2025. This mainly reflected the annual increase in net foreign assets, which entirely offset the decline in net domestic assets during the period.
 - Net foreign assets increased, primarily owing to the increase in foreign asset accumulation and the marginal drop in foreign liabilities. Meanwhile, net domestic assets declined, mainly reflecting the decline in net claims on central government.

Broad Money

- Broad money (M2) registered a growth of 20% at the end of October 2025, after recording a growth of 17% at the end of September 2025.
 - On the components side, the annual increase in broad money mainly reflected the significant increase in transferable deposits as well as time deposits denominated in local currency, followed by an increase in transferable deposits and time deposits denominated in foreign currency. Meanwhile, currency outside depository corporations rose during the month.
 - As for the sources, the growth in broad money was primarily driven by the increase in net domestic assets, mainly owing to the increase in net claims on the central government by the commercial banks, together with the increase in credit to the private sector. Meanwhile, net foreign assets also increased, as the increase in foreign asset accumulation outpaced the increase in foreign liabilities during the period.

Sources of Reserve Money, 2016 - 2025

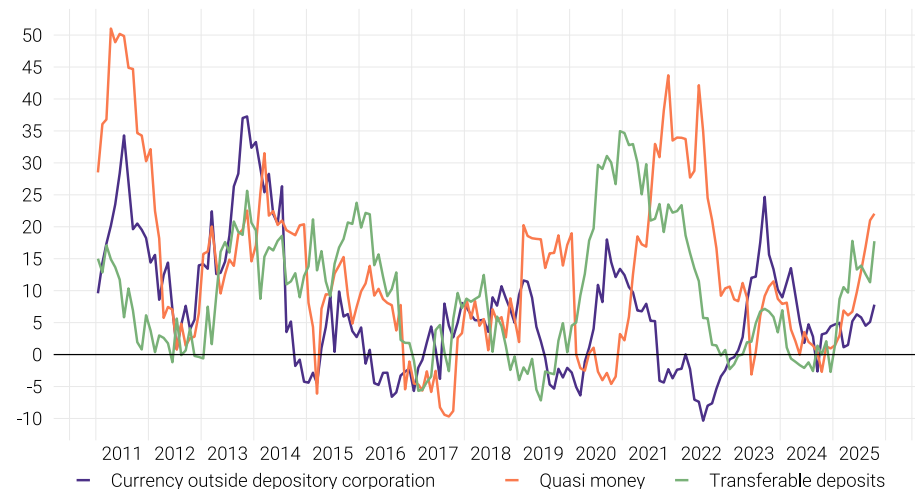
(annual percentage change, contribution percent)



Source: Maldives Monetary Authority

Components of Broad Money, 2011 - 2025

(annual percentage change)



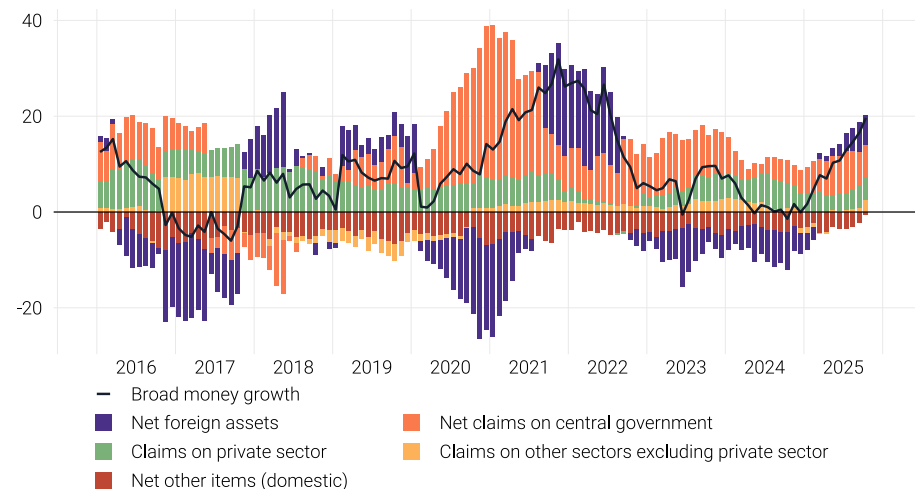
Source: Maldives Monetary Authority

Credit to Private Sector

- The annual growth rate of credit to the private sector by the commercial banks registered an 8% increment at the end of October 2025, from 6% recorded in September 2025.
 - As such, credit to major sectors (namely personal loans, tourism, commerce, construction and real estate) continued to expand in October 2025. Personal loans registered the highest growth during the month, with an annual increase of 19%. Meanwhile, the tourism sector continued to account for the largest share of bank credit with 35%, while registering a marginal increase.
 - The annual growth in credit for personal loans was driven by the increase in credit lent in the form of credit cards and consumer durables, while educational loans registered a marginal increase. As for the tourism sector, the annual increase in credit to the sector was driven by the increase in credit lent for working capital, new resort development and guesthouses.

Contribution to Broad Money, 2016 - 2025

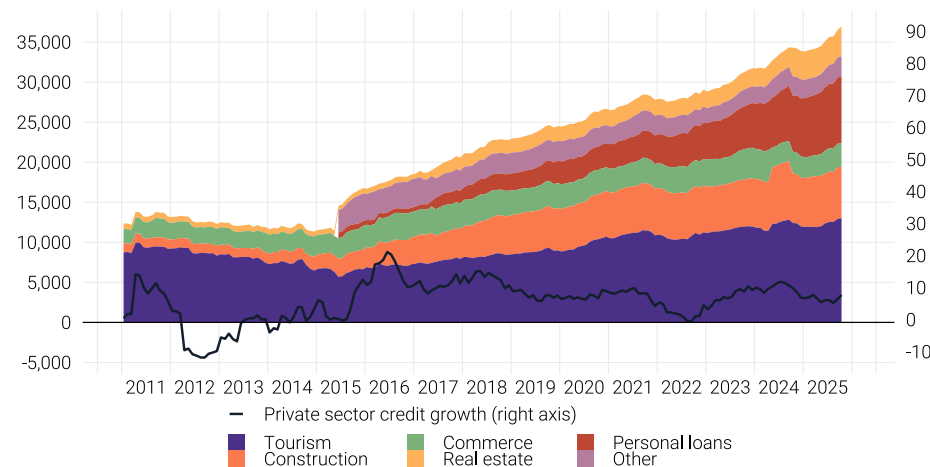
(annual percentage change, percentage point contribution)



Source: Maldives Monetary Authority

Private Sector Credit, 2011 - 2025

(millions of rufiyaa, annual percentage change)



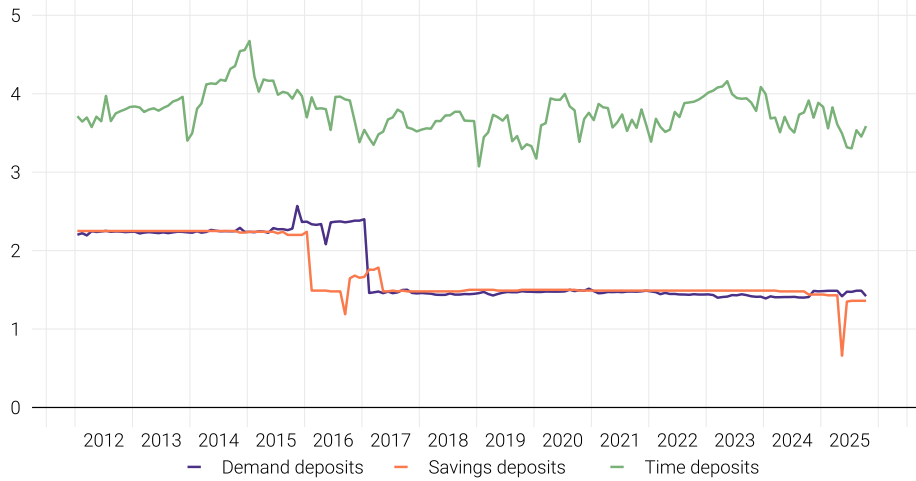
Source: Maldives Monetary Authority

Note: Personal loans were not classified as a separate category prior to June 2015.

Interest rates

Interest Rate on National Currency Deposits, 2012 - 2025

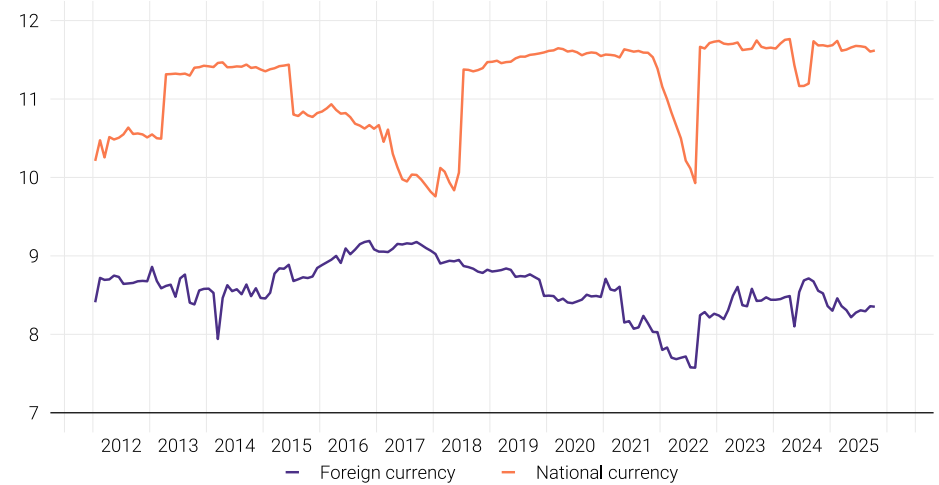
(weighted average)



Source: Maldives Monetary Authority

Interest Rate on Private Sector Loans and Advances, 2012 - 2025

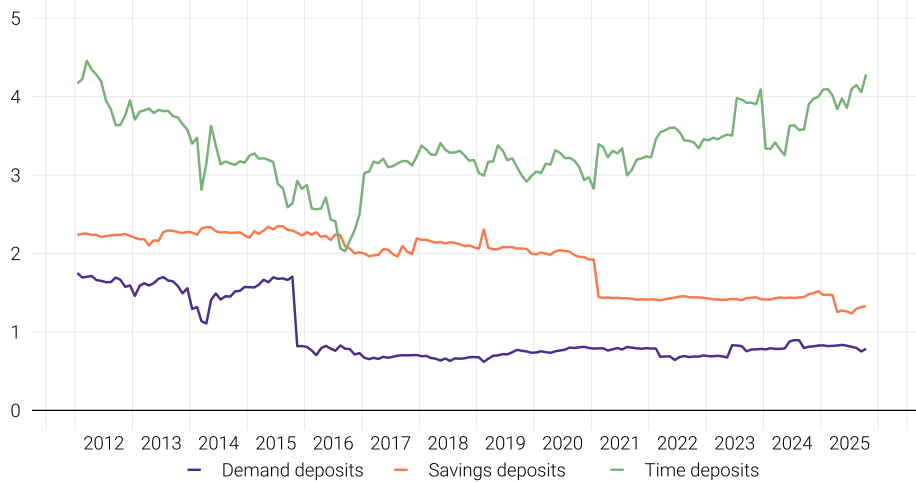
(weighted average)



Source: Maldives Monetary Authority

Interest Rate on Foreign Currency Deposits, 2012 - 2025

(weighted average)



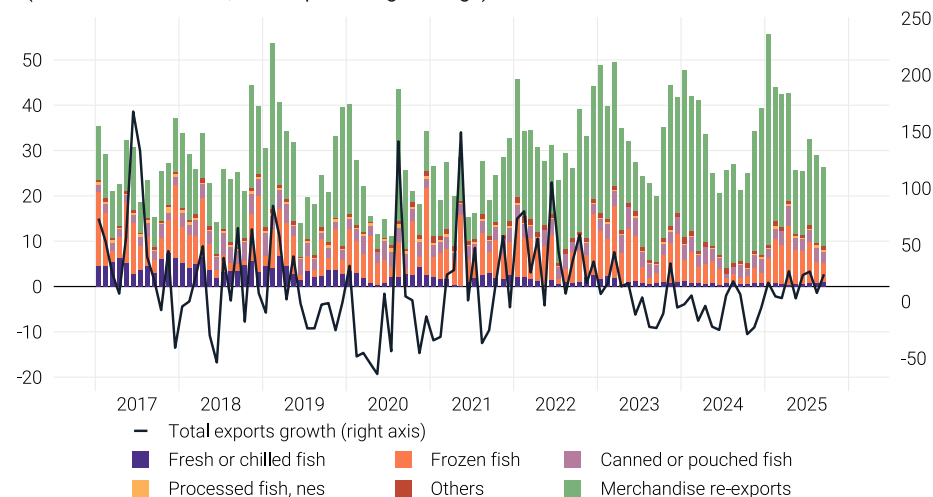
Source: Maldives Monetary Authority

External Trade

- Total exports (f.o.b) increased by 24% in September 2025, when compared with September 2024, while total imports (c.i.f) declined by 10% during the same period.
 - The annual increase in total exports stemmed primarily from the significant increase in domestic exports, largely owing to higher earnings from frozen skipjack tuna, followed by fresh or chilled yellowfin tuna and frozen yellowfin tuna. Similarly, re-exports increased during the period, which reflected higher earnings from the other re-exports category as well as increased earnings from re-exports of jet fuel.
 - The annual decline in import expenditure stemmed mainly from the decline in imports of transport, equipment and parts, petroleum products, machinery and mechanical appliances and parts as well as furniture, fixtures and fittings. In contrast, imports of construction-related items, and pharmaceutical items increased during the period.
- Overall, for the period January to September 2025, total exports increased by 14%, while total imports declined by 2% when compared with the corresponding period of 2024.

Total Exports, 2017 - 2025

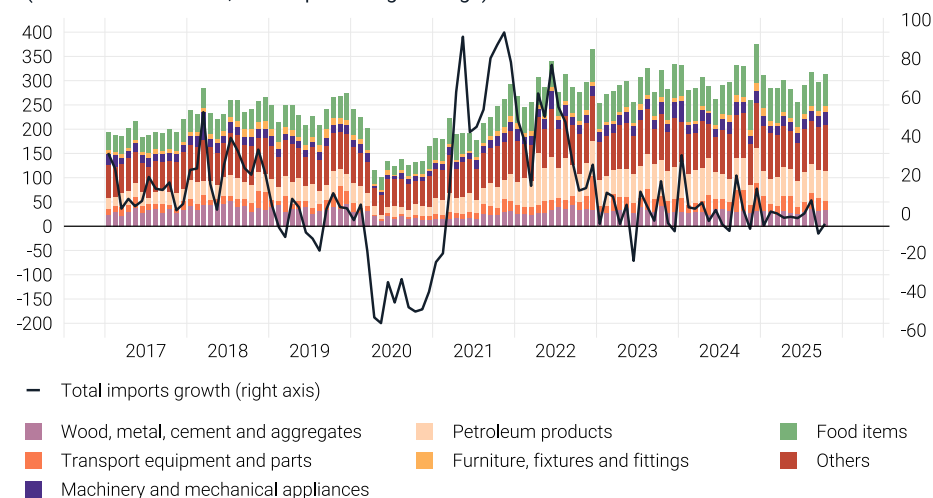
(millions of US dollars, annual percentage change)



Source: Maldives Customs Service

Total Imports, 2017 - 2025

(millions of US dollars, annual percentage change)



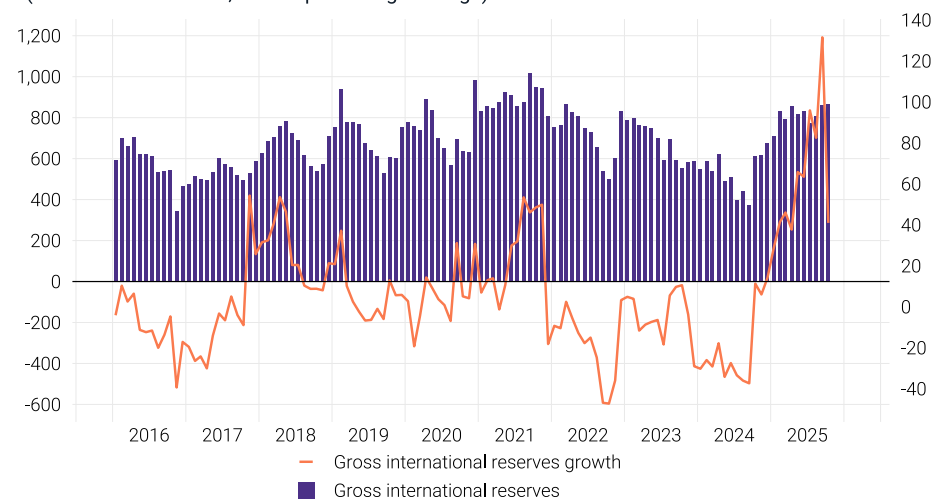
Source: Maldives Customs Service

Gross International Reserves

- Gross international reserves³ (official reserve assets) increased to US\$866.3 million at the end of October 2025, from US\$859.9 million at the end of September 2025. Additionally, this depicted a growth of US\$251.7 million from US\$614.6 million recorded at the end of October 2024.
- In terms of growth rates, increases of 41% and 1% were registered when compared with October 2024 and September 2025, respectively.

Gross International Reserves, 2016 - 2025

(millions of US dollars, annual percentage change)



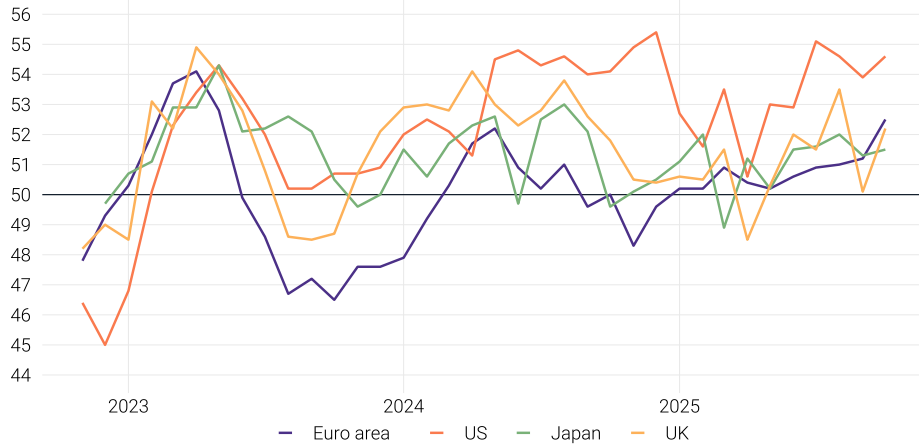
Source: Maldives Monetary Authority

³Comprises foreign currency deposits of the MMA and the government, commercial banks' US dollar reserve accounts and Maldives' reserve position at the IMF.

International Economic Developments

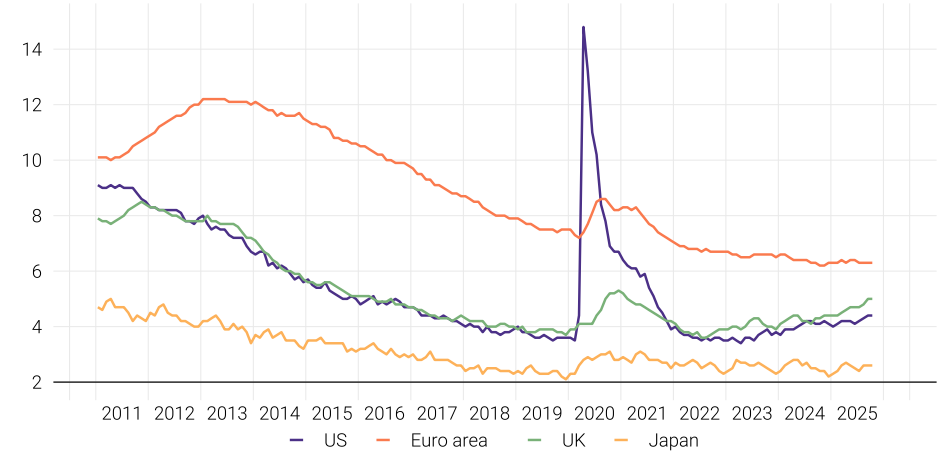
Global Output

Purchasing Manager's Index in the Advanced Economies, 2022 - 2025
(index points)



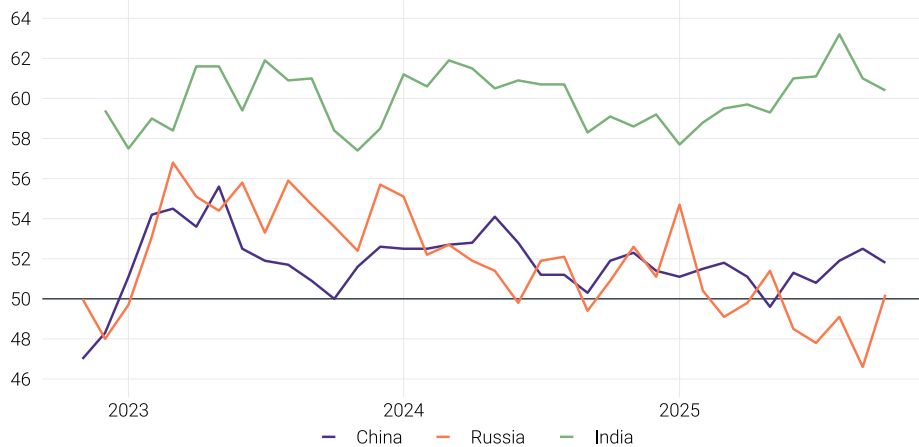
Source: Bloomberg Database

Unemployment in the Advanced Economies, 2011 - 2025
(percent)



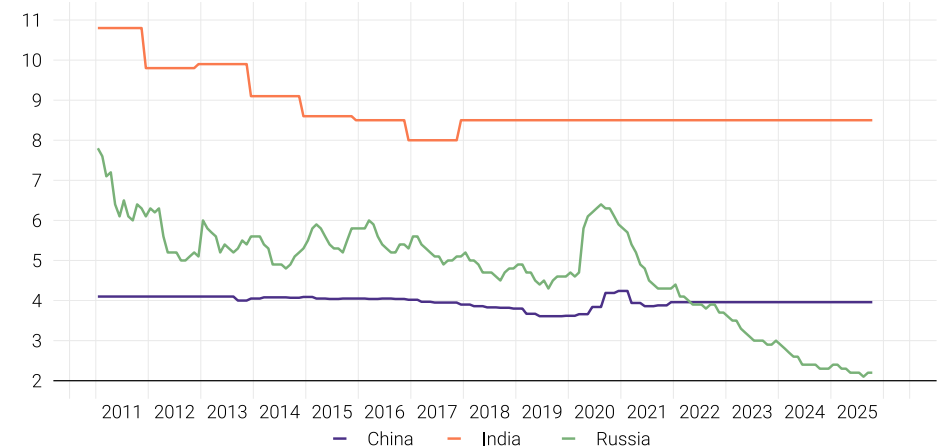
Source: Bloomberg Database

Purchasing Manager's Index in the Emerging Economies, 2022 - 2025
(index points)



Source: Bloomberg Database

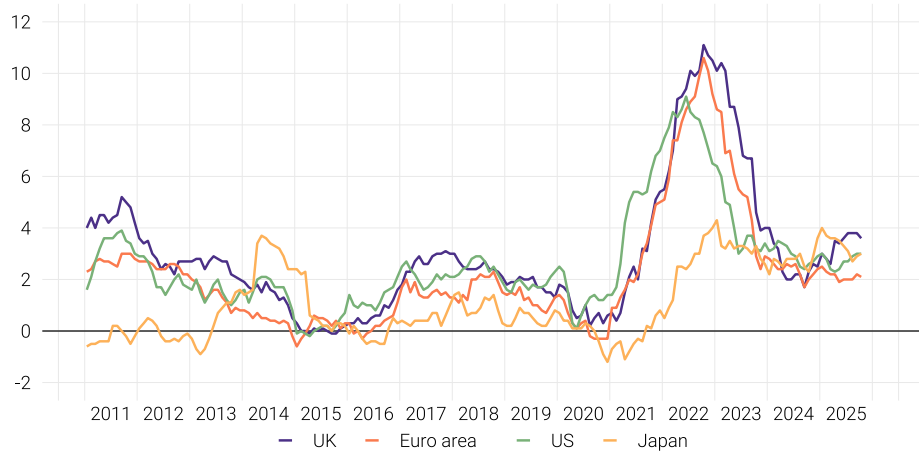
Unemployment in the Emerging Economies, 2011 - 2025
(percent)



Source: Bloomberg Database

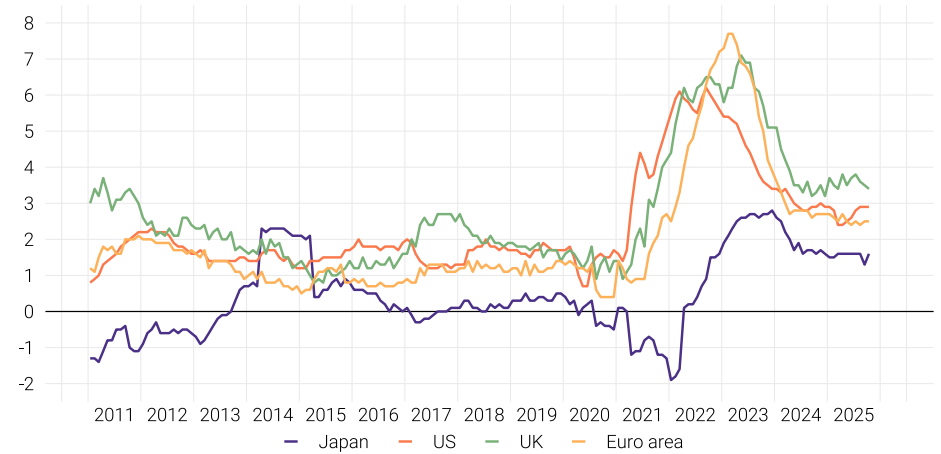
Global Inflation

Inflation in the Advanced Economies, 2011 - 2025
(percent)



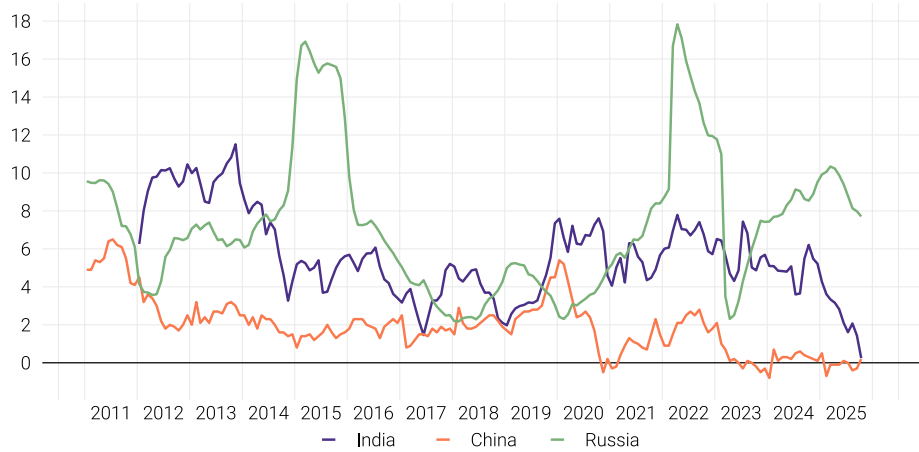
Source: Bloomberg Database

Core Inflation in the Advanced Economies, 2011 - 2025
(percent)



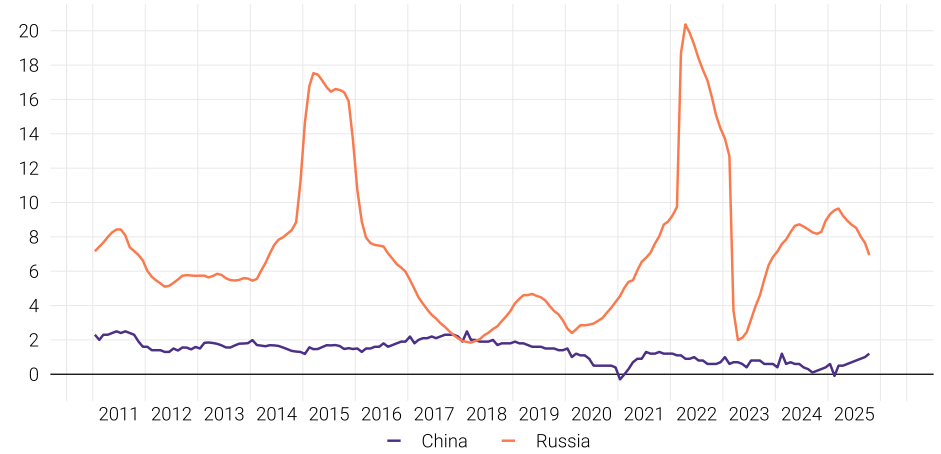
Source: Bloomberg Database

Inflation in the Emerging Economies, 2011 - 2025
(percent)



Source: Bloomberg Database

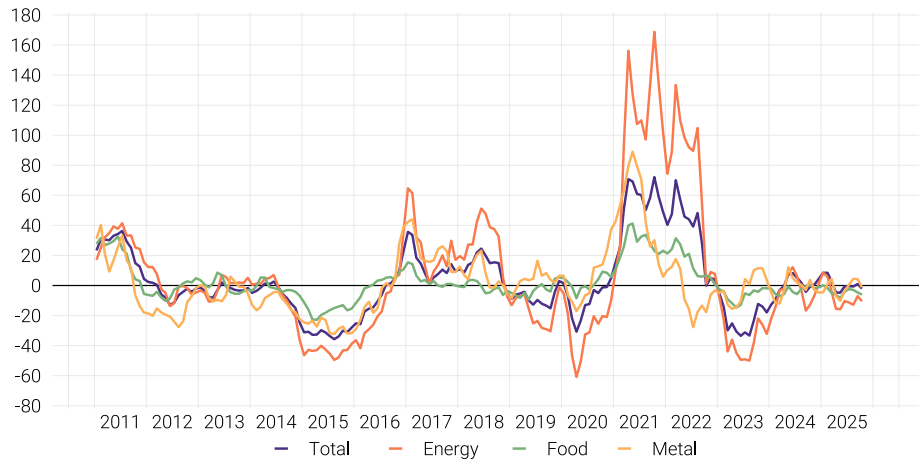
Core Inflation in the Emerging Economies, 2011 - 2025
(percent)



Source: Bloomberg Database

Commodity Prices

Commodity prices, 2011 - 2025
(annual percentage change)



Source: IMF

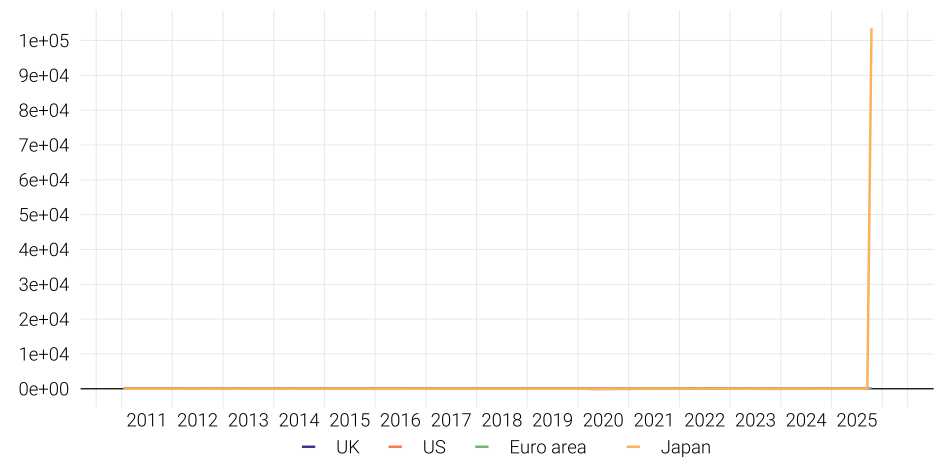
Oil prices, 2011 - 2025
(dollars per barrel)



Source: Bloomberg Database

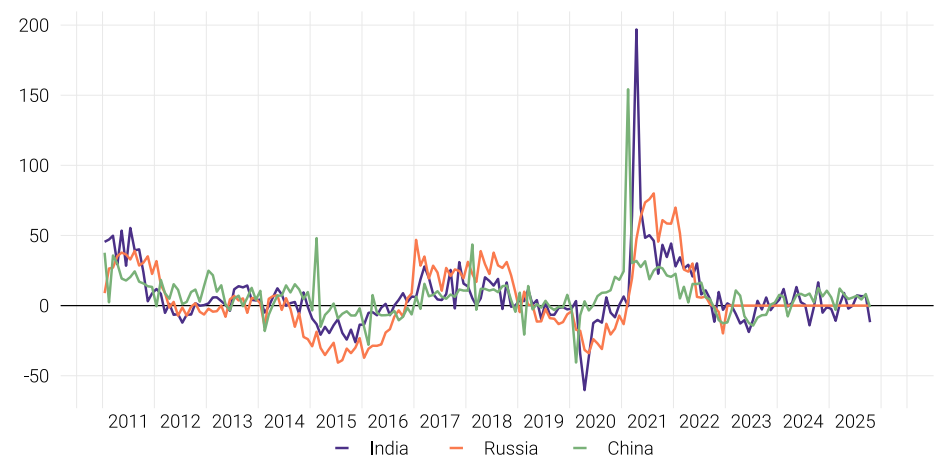
Global Trade

Exports in the Advanced Economies, 2011 - 2025
(annual percentage change)



Source: Bloomberg Database

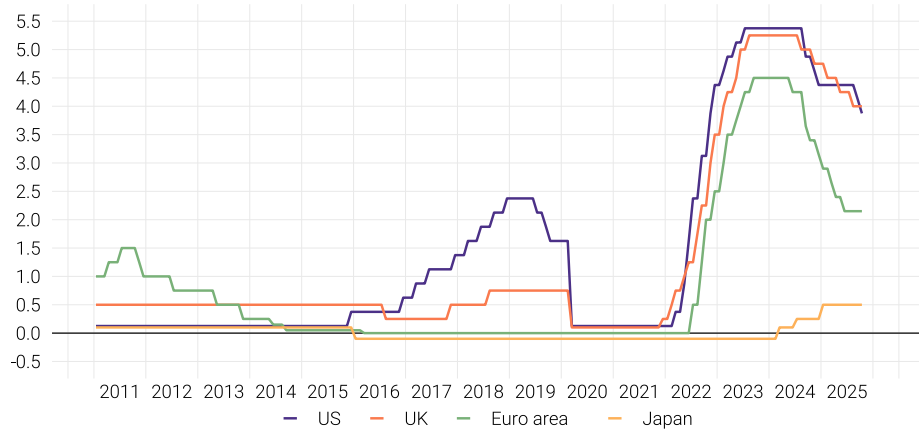
Exports in the Emerging Economies, 2011 - 2025
(annual percentage change)



Source: Bloomberg Database

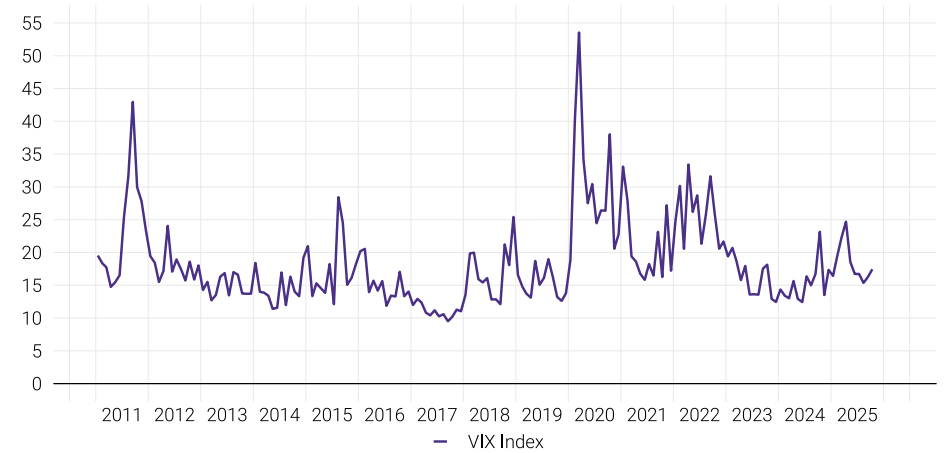
Global Financial Markets

Monetary Policy Rates in the Advanced Economies, 2011 - 2025
(percent)



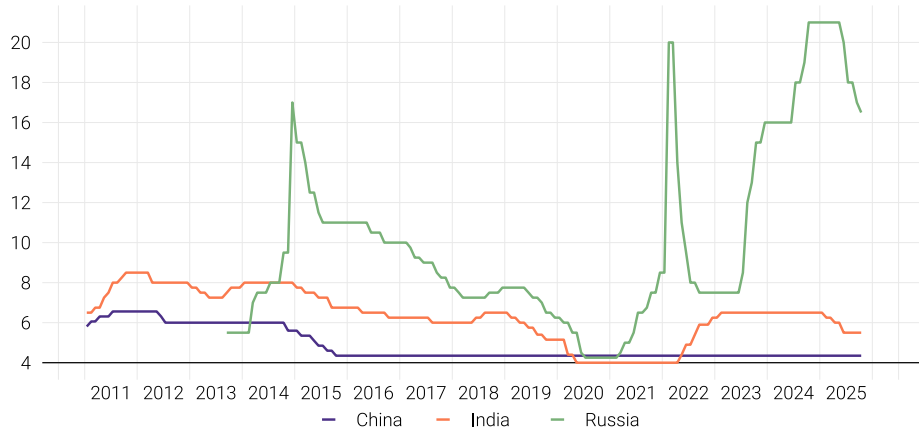
Source: Bloomberg Database

Volatility Index, 2011 - 2025
(percent)



Source: Bloomberg Database

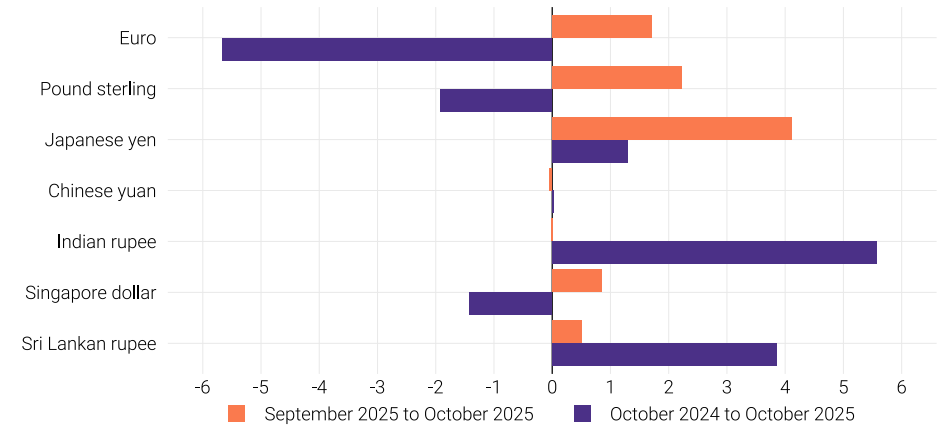
Monetary Policy Rates in the Emerging Economies, 2011 - 2025
(percent)



Source: Bloomberg Database

Note: Policy rate for China indicates the 1-Year Benchmark Lending Rates.

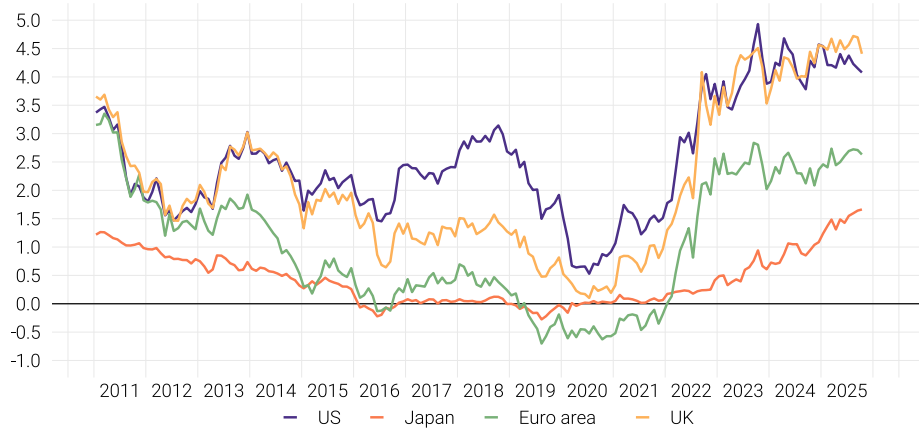
Exchange Rate of US Dollar against Currencies of Major Trading Partners, October 2025
(percentage change)



Source: Bloomberg Database

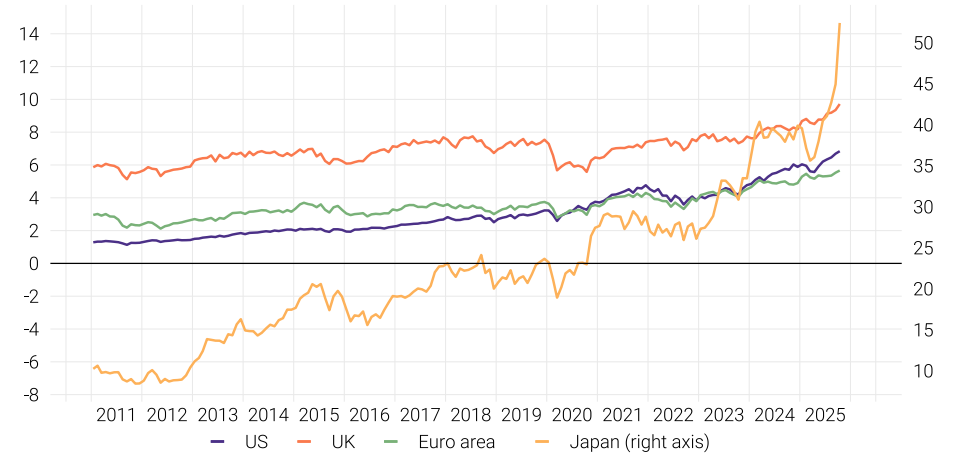
Global Financial Markets

Sovereign Bond Yield in the Advanced Economies, 2011 - 2025
(percent)



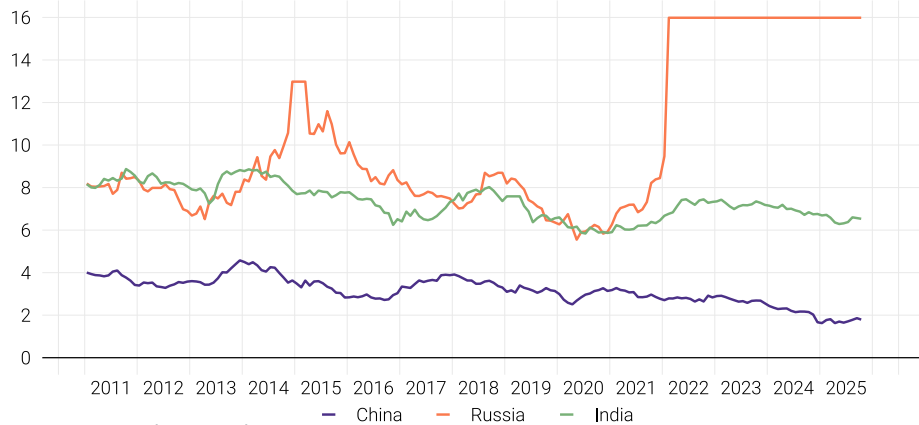
Source: Bloomberg Database
Note: 10-Year Sovereign Bond Yields.

Share Price Index in the Advanced Economies, 2011 - 2025
(price index, in thousands)



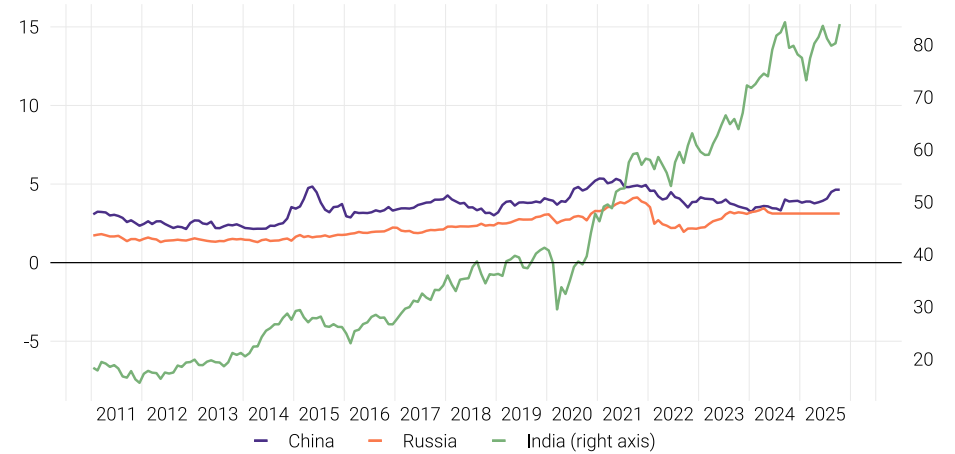
Source: Bloomberg Database

Sovereign Bond Yield in the Emerging Economies, 2011 - 2025
(percent)



Source: Bloomberg Database
Note: 10-Year Sovereign Bond Yields.

Share Price Index in the Emerging Economies, 2011 - 2025
(price index, in thousands)



Source: Bloomberg Database



Boduthakurufaanu Magu
Male' - 20182
Republic of Maldives
Tel: (960) 3312343
Fax: (960) 3323862
Email: mail@mma.gov.mv
Website: www.mma.gov.mv