

Environmental Impact Assessment for Development of new Power House at B. Hithaadhoo



April 2016

Proponent: FENAKA Corporation Limited

Prepared by;

Mahfooz Abdull Wahhab

Mohamed Ibrahim Jaleel

Ali Shareef

Table of Contents

1.0 INTRODUCTION..... 11

1.1 Purpose of this EIA 11

1.2 Project background 11

1.3 Project Objectives 11

1.4 Proponent 11

1.4.1 Power generation services 11

1.4.2 Water and Waste water services..... 12

1.5 Consultants 13

2.0 STUDY AREA..... 14

2.1 Relevant development in the area..... 15

3.0 PROJECT DESCRIPTION 16

3.1 Proposed Works 16

3.1.1 Construction of new power house..... 16

3.1.2 Transfer of generators and panel boards 17

3.2 Powerhouse design 17

3.2.1 Generator set details 17

3.2.2 Sound Minimization..... 18

3.2.3 Emergency power mechanism 18

3.2.4 Measures to increase power efficiency 18

3.2.5 Safety components 18

3.2.6 Fuel Management..... 19

3.3 Project inputs and outputs 24

3.4 Detailed construction method 24

3.4.1 Workforce..... 24

3.4.2 Materials and machinery required for construction 24

3.4.3 Mobilization..... 25

3.4.5 Proposed timeline for project activities 25

4.0 EXISTING ENVIRONMENT 26

4.1 General Climate 26

4.2 Temperature 26

4.3 Rainfall 27

4.4 Insolation 28

4.5 Wind 29

4.6 Waves 30

4.7 Hazard Vulnerability 31

4.8 Water Quality 32

 4.8.1 Sampling method 32

 4.8.2 Sampling location 32

 4.8.3 Results 34

4.9 Vegetation 35

 4.9.1 Method 35

 4.9.2 Results 35

 4.9.1 Dhivehi names for the vegetation 36

4.10 Noise level 38

 4.10.1 Method 38

 4.10.2 Results 39

4.11 Air quality 40

 4.11.1 Method 40

 4.11.2 Results 41

5.0 LEGISLATIVE AND REGULATORY CONSIDERATIONS 44

 5.1 Law on general public services (4/96) 44

 5.2 Law on Environmental Protection and Preservation of the Maldives (4/93) 44

 5.3 1st addendum to Environmental Protection and Preservation of the Maldives (4/93) law no 12/2014 45

 5.4 Environmental Impact Assessment Regulation 2012 46

 5.5 Waste management regulation 47

 5.6 Regulation on provision of electricity to Male’ and islands 53

 5.7 Guideline for power system approval 58

6.0 POTENTIAL IMPACTS AND MITIGATION 59

6.1 Impact identification methodology 59

6.2 Limitations in impact prediction 60

6.3 Impacts during Construction 60

6.3.1 Impacts on Air quality 61

6.3.2 Impacts on water quality 61

6.3.3 Impacts from Waste 62

6.3.4 Impacts on terrestrial environment 62

6.4 Impacts summary 62

6.5 Impacts during operation 64

6.5.1 Impacts on water quality 64

6.5.2 Impacts on air quality 65

6.5.3 Noise disturbance 65

6.5.4 Socio-economic impacts 66

6.5.5 Health 66

6.5.6 Impacts from Waste 66

6.5.7 Fire hazard risk and safety 67

6.6 Impacts summary 67

7.0 ALTERNATIVES 70

7.1 No project scenario 70

7.2 Alternative locations for powerhouse 70

8.0 MONITORING 72

8.1 Monitoring schedule 73

9.0 STAKEHOLDER CONSULTATIONS 74

9.1 Public Consultation 74

9.2 Meeting with the island council 75

9.3 Consultations with working staff on site 75

10.0 CONCLUSION 77

11.0 REFEEERENCES 78

List of Figures

Figure 1: location of Hithaadhoo, B.Atoll14

Figure 2: study area15

Figure 3: proposed powerhouse location.....17

Figure 4: site plan of the project20

Figure 5: sectional elevation of powerhouse21

Figure 6: floor plan of powerhouse22

Figure 7: front and side elevation of powerhous23

Figure 8: proposed timeline for project activities25

Figure 9: monthly maximum and minimum temperatures(⁰C) for Maldives throughout the year.
 Data since 2000, adopted from the National Meterological Centre.27

Figure 10: rainfall (mm) data since 2000, adopted from the National Meterological Centre28

Figure 11: average daily insolation (hours) for different areas29

Figure 12: wind vectors from 2003 to 2008.30

Figure 13: Ten year mean monthly wave height and direction for the central Maldives. Source:
 Young (1999).....31

Figure 14: erosion at the proposed powerhouse location31

Figure 15: water sample locations33

Figure 16: high density Cyperus polystachyos and Launeaea sarmentosa growing on the ground
35

Figure 17: types of plants in plot given for powerhouse development37

Figure 18: noise level measurement locations.....39

Figure 19: air quality measurement location41

Figure 20: impact zone during construction. Orange; is primary impact zone and yellow; is
 secondary impact zone.....60

Figure 21: impact zone during operations. Orange; primary impact zone and green; secondary
 impact zone.....64

Figure 22: alternative locations for powerhouse. In green is the proposed powerhouse location
 and red is the alternative locations studied.71

List of Tables

Table 1: generator set details in B. Hithaadhoo.....18
 Table 2: estimated quantities of project inputs and outputs24
 Table 3: geocoordinates of water sample location32
 Table 4: water sample results34
 Table 6: Dhivehi and scientific names for plants36
 Table 7: geocoordinates of noise level measurement locations38
 Table 8: results of noise level measurements39
 Table 9: geocoordinates of air quality measurement location40
 Table 10: air quality results41
 Table 11: population details of Hithaadhoo42
 Table 12: impact characteristics, where 5 is of highest significance.....59
 Table 13: summary of impacts during construction62
 Table 14: summary of impacts during operation.....68
 Table 15: environmental monitoring plan72
 Table 16: monitoring schedule73
 Table 17: details of individuals consulted74
 Table 18: attendees of council meeting75
 Table 19: names of staffs that were consulted.....76

FNK-F/203/2016/1142

Environmental Protection Agency
Male'
Republic of Maldives

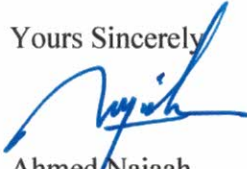
25th April 2016

Dear Mr. Ibrahim Naeem,

Re: Environmental Impact Assessment for Powerhouse Development in B. Hithaadhoo

As per the requirements of the EIA regulation, we hereby confirm our commitment to implement the mitigation measures according to what is proposed in the EIA report attached herewith.

Yours Sincerely



Ahmed Najaah

Assistant Director



Declaration of the proponent

As the representative of the proponent of the proposed project I assure that I have read the report thoroughly and that to the best of my knowledge all information provided here is accurate and complete. In addition, I confirm our commitment to making sure that the contractor implements all mitigation measures proposed in the present report and adhere to the monitoring schedule given.

Name: Ahmed Najaah

Date: 25th April 2016

Signature:



DECLARATION OF CONSULTANTS

We hereby confirm that the information in this report is accurate to the fullest of our understanding.



Ali Shareef (EIA 19/11)



Mahfooz Abdul Wahhab (Registration no: EIA TA03/15)

1.0 INTRODUCTION

1.1 Purpose of this EIA

The aim of this EIA is to critically analyze the environmental and socio-economic impacts which may arise due to the relocation of power house in B. Hithaadhoo. After analyzing the impacts it would be then possible to suggest proper mitigation measures to prevent or reduce any negative impacts and to enhance any positive impacts.

1.2 Project background

In Hithaadhoo, the currently operational powerhouse is in the middle of the residential area. The smoke and noise from the powerhouse is disturbing the neighboring houses. Furthermore the existing powerhouse is not in accordance with current standards. The current project aims to minimize the disturbance to residents by building a new powerhouse away from the residential area.

1.3 Project Objectives

The objective of the project is to build a power house to provide power in a sustainable manner to the people of Hithaadhoo with minimum disturbance to residents.

1.4 Proponent

The proponent, Fenaka Corporation Limited was established on 18th June 2012 by a presidential decree under the companies Act of 10/96, as a limited liability company. The company is registered on 1st of August 2012 and it is 100% Government owned utility company with a mandate to provide island communities with electricity, water and sewerage. Today, FENAKA is a multi-disciplinary engineering organization, dealing contracts involved in civil, mechanical, electrical, water and waste water engineering.

1.4.1 Power generation services

Out of a total of 196 inhabited islands in the country, FENAKA Corporation provides electricity services to 152 islands. 24 / 7 sustainable electricity provision was not achieved to outer islands until recently FENAKA corporation started providing the services to the islands. In its short history the company has carried out numerous projects for the betterment of the service provision, one such example is the 77 Genset project which aided in the sustainable service provision. Furthermore, as electricity services were provided by the island communities themselves in the past, the location, infrastructure and operations were not ideal. This causes negative impacts and disturbance to the communities and the environment. Therefore, every year the company carries out a number of projects in power house relocation, refurbishment and generated set upgrading throughout the country.

Electricity is mainly generated through diesel, however the Company is now slowly shifting towards renewable energy as a form of power generation. The company is also an important implementing partner in the mega projects of the Governments renewable energy. Some of these projects include;

- Preparation of outer islands for Sustainable energy development (POISED), funded by Asian Development Bank
- Accelerating Sustainable Private Investments in Renewable Energy (ASPIRE), funded by the World Bank

1.4.2 Water and Waste water services

At FENAKA Corporation, safe water is provided to the public after desalinating sea water into potable drinking water through the process of reverse osmosis. Water produced and distributed by the Company adheres to the standards set by Environment Protection Agency (EPA) in the Maldives. Currently the company operates fully fledged system with complete RO plants, distribution networks and pipe distribution to households in 4 islands, which includes; GDh. Thinadhoo, GDh. Gahdhoo, Ha.Ihavandhoo and Ha.Thuraakunu. Out of the 3 islands, two of them are operated on the principles of Integrated Water Resource Management (IWRM) where conjunctive use of water is practiced, whereby 25% of the total demand is catered by rainwater by catchment from public roof tops. This is in line with the countries global commitments of the Sustainable Development Goals where the adaptation of IWRM principles is a specified goal. Other than the fully fledged systems, the company also have standalone RO plants, some with community tap bay systems where services are mainly to the fishing vessels and any other need of the community.

Other than service provision, the company also implements one of the largest water projects of the nation, which is the provision of water supply services to the Allied islands of Addu City. The project is nearing completion and is expected to be completed within this year.

FENAKA operates the sewerage system of around 28 islands by means of a gravity collection system and effluent is discharged to the open ocean by means of pump stations and sea outfalls. Furthermore, the company has recently successfully completed the design and construction of sewer systems in Th. Buruni and Th. Madifushi and the sewer project for L. Maamendhoo is ongoing. Moreover, the construction of sewer services of Hithadhoo central area is also carried out by Fenaka Corporation.

1.5 Consultants

This EIA report has been compiled by Mahfooz Abdull Wahhab and Mohamed Ibrahim Jaleel who are registered temporary EIA Consultants. The report was reviewed and edited by Ali Shareef, who is a registered EIA consultant with over 19 years of experience and has been involved in numerous projects in the Maldives such as resort development project, sewerage system, RO plants, reclamation, shore protection and harbour projects.

2.0 STUDY AREA

Hithaadhoo is located on the Southern tip of B. Atoll. The island is therefore protected from the NE monsoon swells as Lh. Atoll is to the East. To the South of the island lies Goidhoo atoll, and hence Hithaadhoo would be very much protected from the SW monsoon swells.

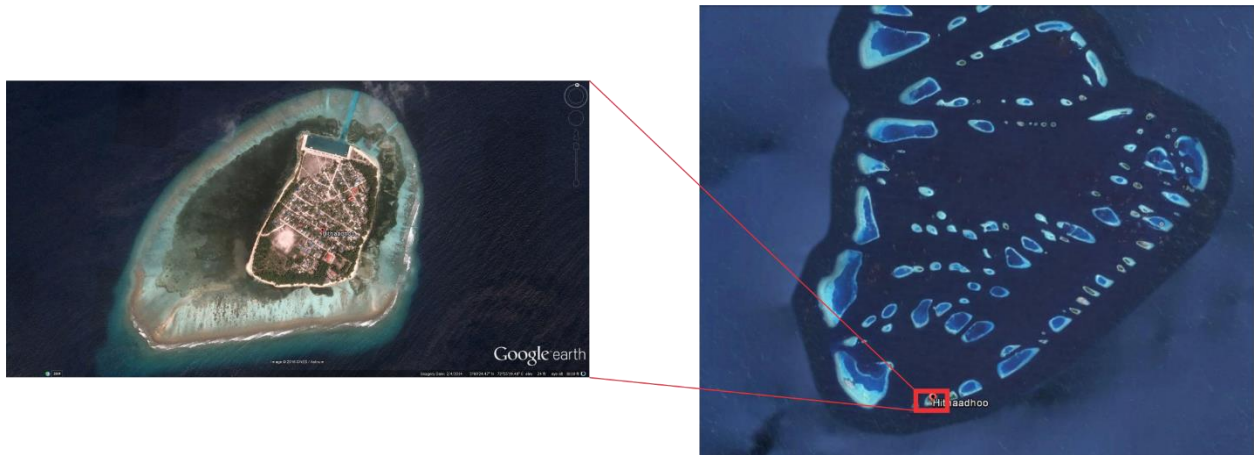


Figure 1: location of Hithaadhoo, B.Atoll

On the reef flat system which Hithaadhoo lies there no other islands. The closest inhabited island is Thulhaadhoo.

The study area comprises of the entire Hithaadhoo Island. Figure below shows the study area boundaries.

There are no environmentally sensitive areas on Hithaadhoo. However B. Atoll is a UNESCO biosphere reserve and there are many environmentally sensitive areas. The closest environmentally sensitive areas are a wetland in Maamaduvvari (1.68 Km from Hithaadhoo), Medhufinolhu (4.98 Km from Hithaadhoo) and Muthafushi with Muthafushi thila (9.18 Km from Hithaadhoo).



Figure 2: study area

2.1 Relevant development in the area

The island council highlighted that near the harbor a business point will be developed, which will include retail and guest shops.

3.0 PROJECT DESCRIPTION

3.1 Proposed Works

3.1.1 Construction of new power house

The current project is looking at the development of a new power house in the proposed location shown on figure below. The project also involves the transfer of the existing temporary generators to the new powerhouse.

The construction of new powerhouse will involve;

Site clearance

Excavation works

Backfilling

Waterproofing

Concreting works of foundation column and roof beams

Masonry and plastering

Roofing

Building of day tanks and fuel storage tanks

Ceiling

Doors and windows installation

Hydraulics and drainage works

Electrical installations

Painting



Figure 3: proposed powerhouse location.

3.1.2 Transfer of generators and panel boards

The existing generators will be lifted from its existing place using a crane and then transferred into the power house. New panel boards will be installed at the new power house. The output from the generators will be connected to the existing distribution grid.

3.2 Powerhouse design

Figures 4 -7 shows the powerhouse elevations. The powerhouse is designed in accordance with MEA and EPA standards.

3.2.1 Generator set details

Existing generators total capacity is 410 KW, the details are as follows;

Table 1: generator set details in B. Hithaadhoo

Set	Size
Set 1	Set 1 : 160kW Cummins Diesel Engine Generator
Set 2	Set 2 : 100kW Cummins Diesel Engine Generator
Set 3	Set 3 : 150kW Cummins Diesel Engine Generator

Air cooling system will be utilized by all the generators.

3.2.2 Sound Minimization

Following measures are incorporated in design to minimize sound levels to below 65dBA at 1m away from DEG room

- Sound Attenuators are installed in the air inlet side and outlet sides of the DEG Room
- DEG Room is built with 6” walls using completely filled Solid blocks
- Roof structure and main DEG Room doors will be clad with Rockwool with density 80g/m2.

3.2.3 Emergency power mechanism

- Movable Backup gensets with containerized generator and control panel.

3.2.4 Measures to increase power efficiency

- Efficient diesel generator governor system and running time
- Scheduled maintenances (de-carbonizing, top overhaul, full overhaul and filter changes) at manufacturer recommended running intervals

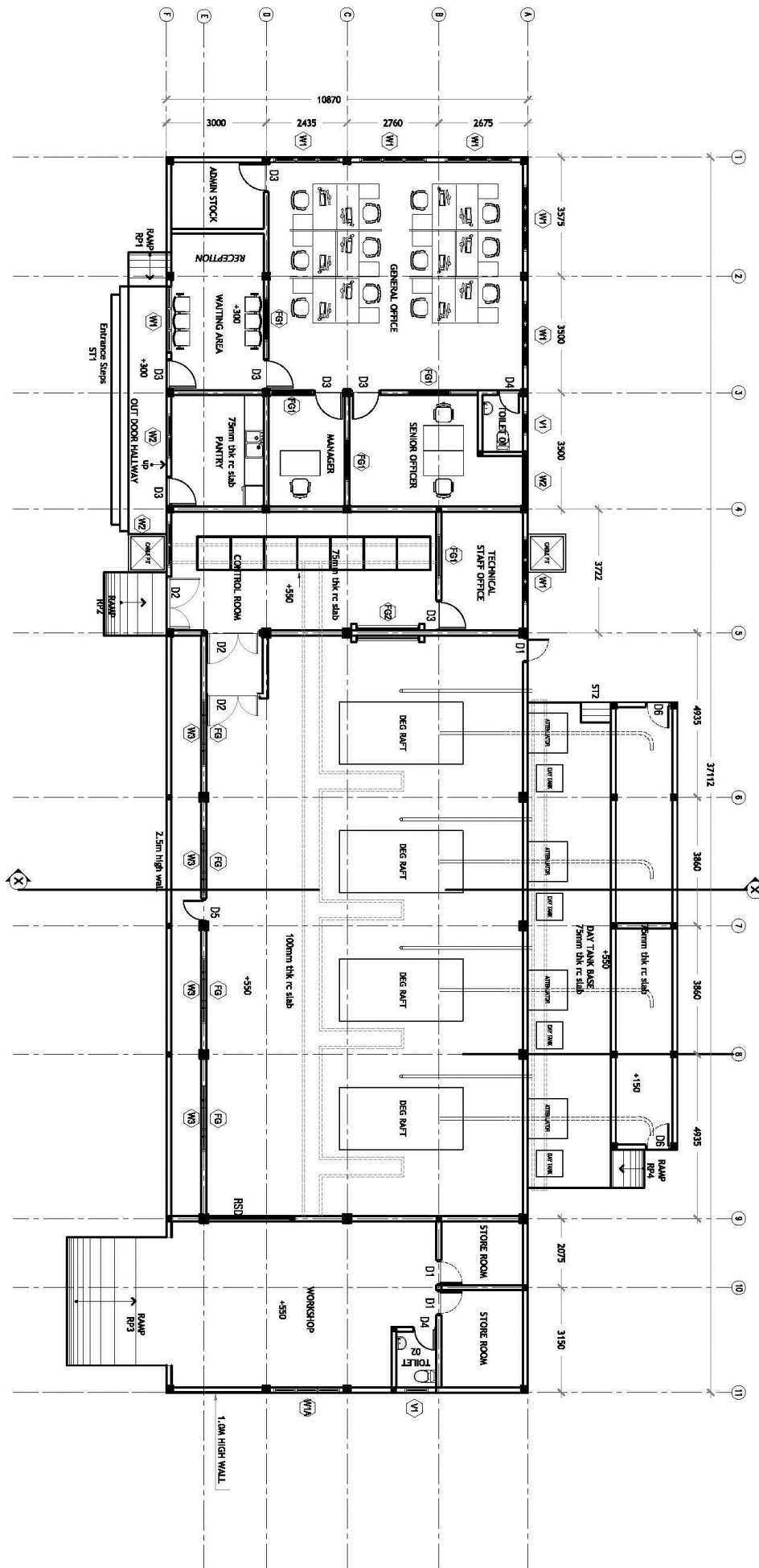
3.2.5 Safety components

- Safety boards
- Fire safety system
- Security camera system
- Lightning protection system

3.2.6 Fuel Management

- 15,000 Liters fuel storage tanks, with reinforce concrete retaining wall will be constructed which will contain the volume of fuel during emergency spills.
- 700 liters day tanks with flow-meters and level detection. Tank installed with 150mm concrete base.
- Fuel pipe line : GI Pipelines conforming to international standards. Pipes will be laid 300mm above ground level. Leak detection and echo-sounding in main tanks and lines will be equipped with flow-meter
- Fuel to be transferred directly from transport vessel (from harbor) to fuel tank at power house through fuel transfer hose, Or by approved vehicles for fuel transfer.
- Lubricant oil consumption : average 98 Liters per month

FLOOR PLAN
SCALE 1:100



<p>ދަރުކާ ޖަނަރޭޝަނަލް ޕްރޮޖެކްޓް ދިވެހިރާއްޖޭގެ ޖުމްހޫރިއްޔާ</p>	
PROJECT: POWERHOUSE - TYPE C LOCATION:	APPROVED BY: MAMUDDU NAIM MANAGING DIRECTOR DESIGNED BY: ABDULLAHSAMIH DIRECTOR
ARCHITECTURAL DESIGNER: ASAFIYAH, M. SHAWEEF ENGINEERS: ASAFIYAH DRAWN BY: ASAFIYAH, M. SHAWEEF SERVICES ENG.: ASAFIYAH, M. SHAWEEF	DWG TITLE: AS GIVEN SCALE: AS GIVEN DIMENSION: mm DATE: DEC 2018 REVISION:
CONTRACTOR'S MUST CHECK ALL DIMENSIONS AND VERIFY ALL STARTING AND WORK ON EACH DRAWING. PRESENCE OVER SCALE DIMENSIONS DO NOT SCALE DIMENSIONS DOWN. PLEASE ADVISE.	
DWG NO.: A-02 PROJECT NO.:	

Figure 6: floor plan of powerhouse

3.3 Project inputs and outputs

Table 2: estimated quantities of project inputs and outputs

Inputs	Outputs
Generators - Fuel (500 liters per day)	Electricity (2115 KWH per day) Greenhouse gases
Workforce (Supervisors, Managers, Construction workers etc.) - 2 managers - 3 supervisors - 3 technician - 12 construction workers	Waste - 1.2 m ³ flow per day
Machineries and equipment's - 1 crane Fuel - 80 liters per day	Greenhouse gases, effluents

3.4 Detailed construction method

3.4.1 Workforce

The workforce required for the construction shall be stationed within the island in existing houses. B. Hithaadhoo has all the utility services therefore there is no requirement to do additional work to provide the services to the workforce.

3.4.2 Materials and machinery required for construction

The material required for construction which is not available locally, shall be imported and shipped from Male' to the site.

The equipment's required for the project are a crane and general construction tools. Some of these are available at the company and others would be sourced from available shops.

3.4.3 Mobilization

The cranes required for the project will be carried to Hithaadhoo via a barge. Other materials and workforce will be transported in a ferry.

3.4.4 Establishment of temporary project facilities

No temporary project facilities will be required to build as the required housing for the workforce will be provided from the residential houses in Hithaadhoo. Waste generated will be temporarily stored at site and transferred to Thilafushi in a monthly basis.

3.4.5 Proposed timeline for project activities

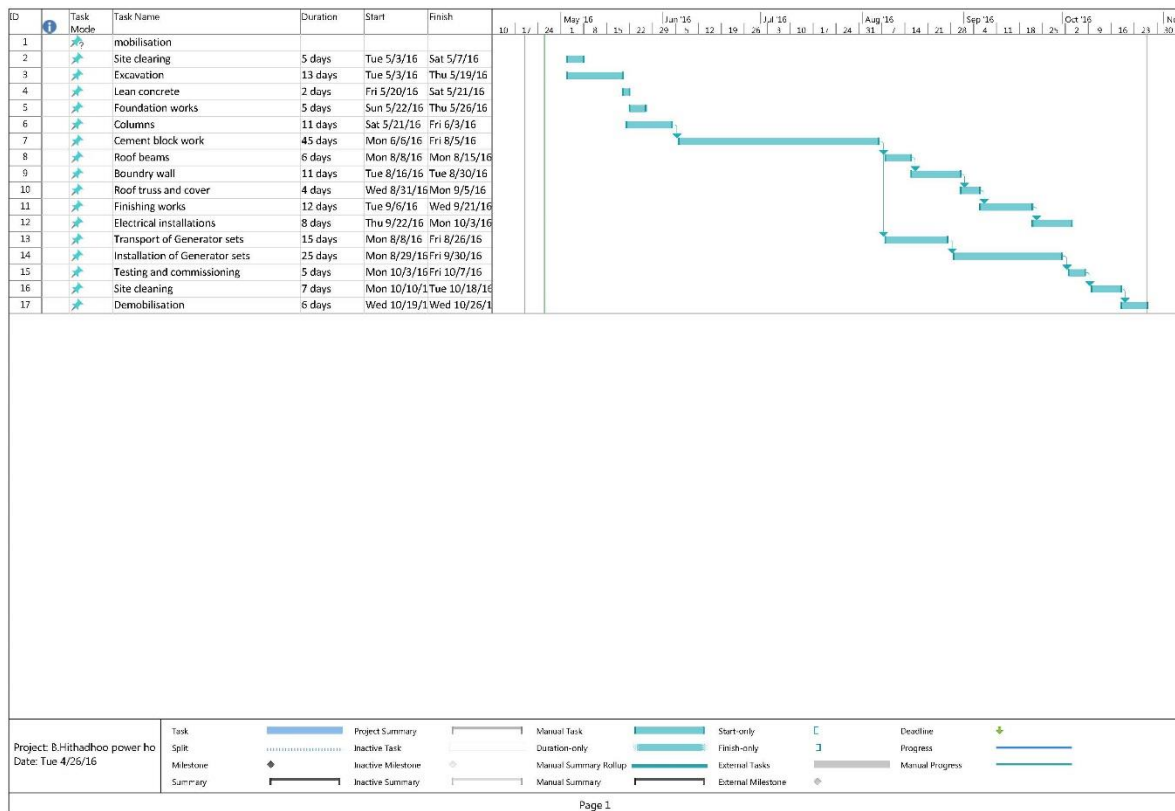


Figure 8: proposed timeline for project activities

4.0 EXISTING ENVIRONMENT

4.1 General Climate

As most of the islands of Maldives is located within and in very close proximity to the equator, all islands experience monsoonal climate. Towards the North the effect of Seasons are more apparent and hence experience infrequent torrential rain, while towards the South the effect of seasons are negligible and experience frequent rain.

Maldives experiences two distinctive monsoons; the North-East Monsoon or dry monsoon which last from January to March and the South-West monsoon or wet monsoon which lasts from May to November. In both seasons the temperature varies slightly despite the huge difference in rainfall.

4.2 Temperature

As the Maldives consists of small islands surrounded by sea even hot days are tempered by cooling sea breezes and mild evening temperatures. Therefore thought the year there is little change in temperature. However the daily temperatures fluctuates between 31 °C in daytime and 23 °C at night. However there were rare temperature anomalies recorded; on 19th May 1991 the highest temperature ever recorded in Maldives was recorded at Kahdhoo Meteorological office - 36.8 °C and on 11th April 1978 the lowest temperature was recorded in National Meteorological Center- 17.2 °C.

Looking closely at the monthly maximum and minimum temperatures from four different meteorological centers, it becomes clear that there is a very small fluctuation in the maximum and minimum temperatures throughout the year. However as expected there is a considerably huge variation in the maximum and minimum temperature for Hanimadhoo. From February to May, the minimum temperature for Hanimaadhoo rose from 24.5 °C to 26.5 °C.

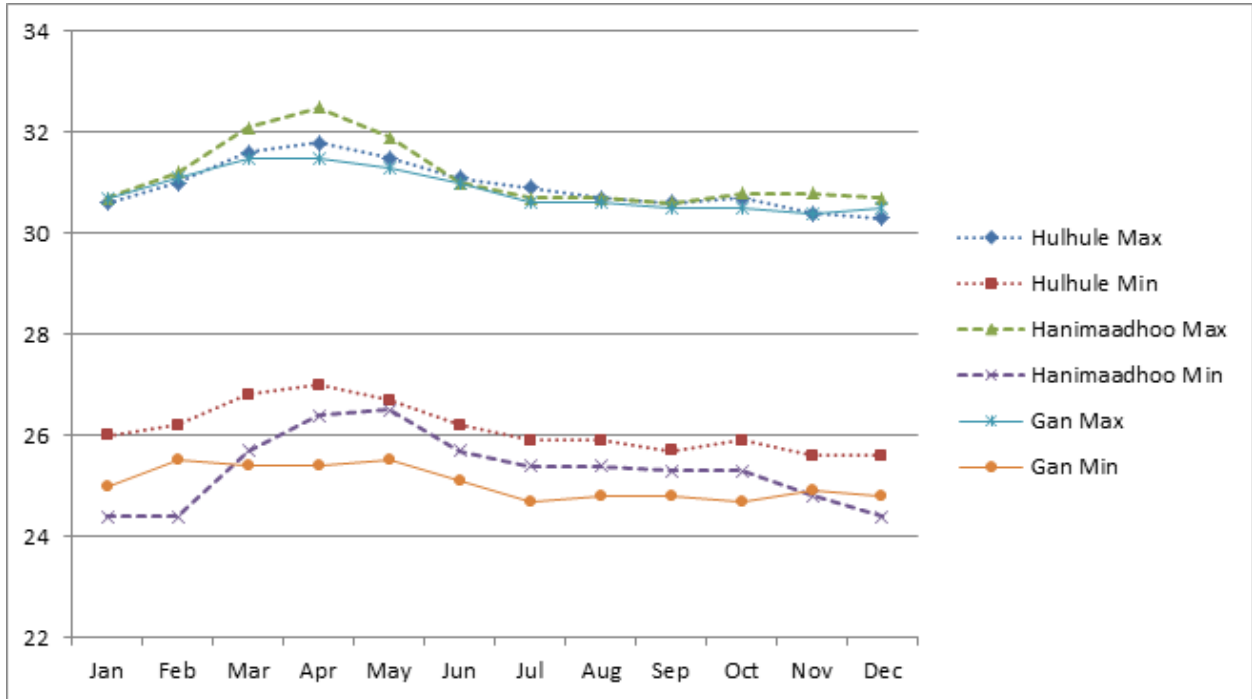


Figure 9: monthly maximum and minimum temperatures(°C) for Maldives throughout the year. Data since 2000, adopted from the National Meteorological Centre.

4.3 Rainfall

During the South-West monsoon, from mid-May to December heavy rainfall is experienced to all atolls. The highest rainfall ever recorded during a 24 hour period was on 9th July 2002 at Kaadedhdhoo Meteorological office, which was 219.8 mm of rainfall.

Looking at rainfall data since 2000, heavy rainfall is experienced (between 200mm and 250mm of rainfall) from May to December. Lowest rainfall is between February and March, where rainfall is between 25mm and 80mm.

There is a considerable difference in the rainfall pattern between the North and the rest of Maldives during May to July and October to December. For North rainfall is higher during May to July which is at 250mm while for other areas 170mm of rainfall, during October to December rainfall for North declines from 225mm to 100mm while rainfall for other areas remains between 210mm and 240mm.

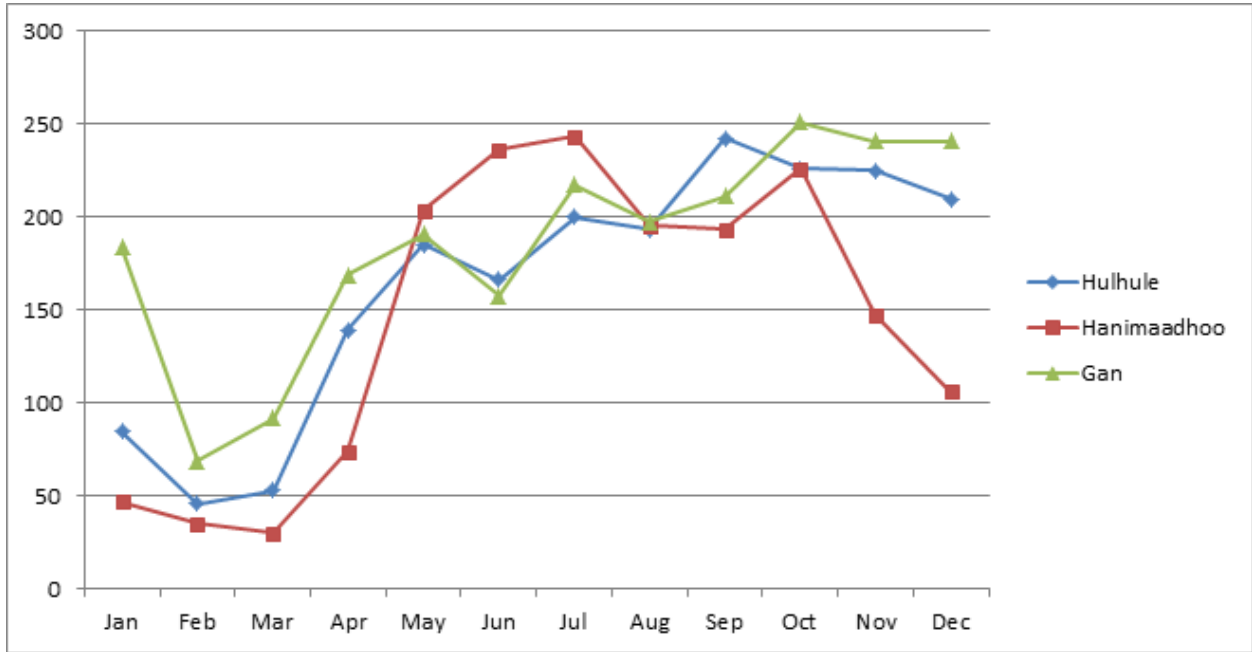


Figure 10: rainfall (mm) data since 2000, adopted from the National Meterological Centre

4.4 Insolation

As the Maldives lie within the equator, it received plentiful of sunlight everyday throughout the year. Highest insolation is received between February and April with a peak of 12 hours of daylight. For North, insolation is lower than for the other areas between May and July; 7 hours of insolation for North while for other areas the lowest sunshine was 8.5 hours.

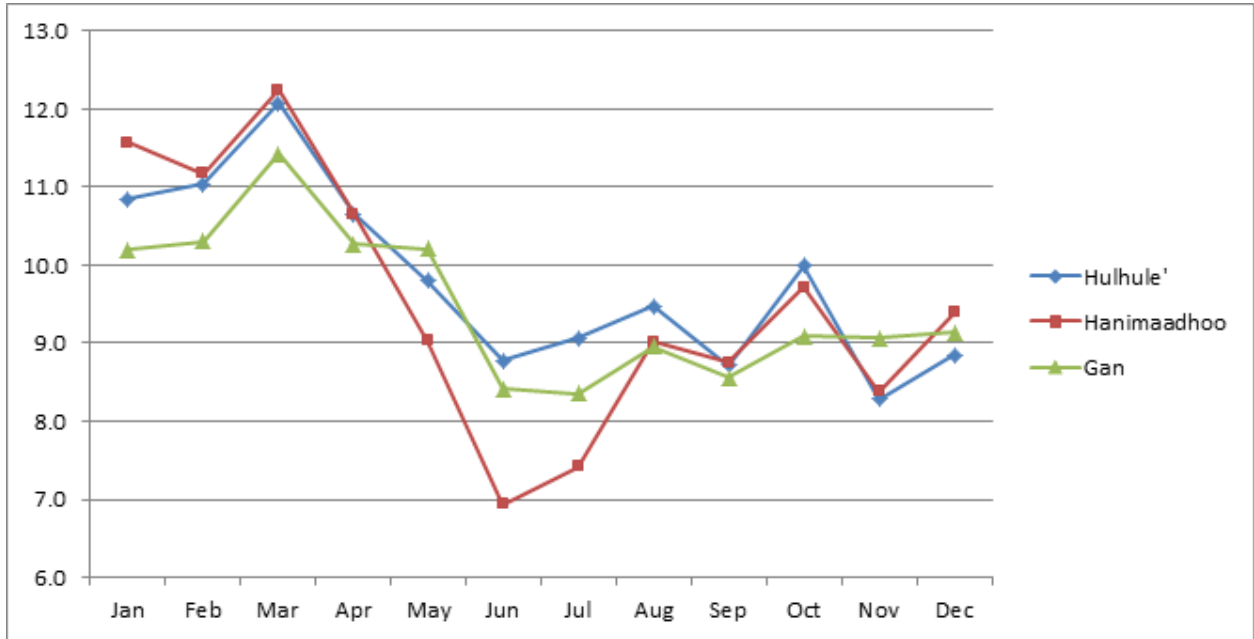


Figure 11: average daily insolation (hours) for different areas

4.5 Wind

The following figure shows wind pattern from year 2003 to 2008, adopted from EIA report for development of B. Voavah as a luxury tourist resort (2015). The blue vectors represent wind direction in the NE monsoon and green vectors represent wind direction in the SW monsoon. As can be seen from the vectors during the SW monsoon wind predominately blows from the SW and during NE from the NE.

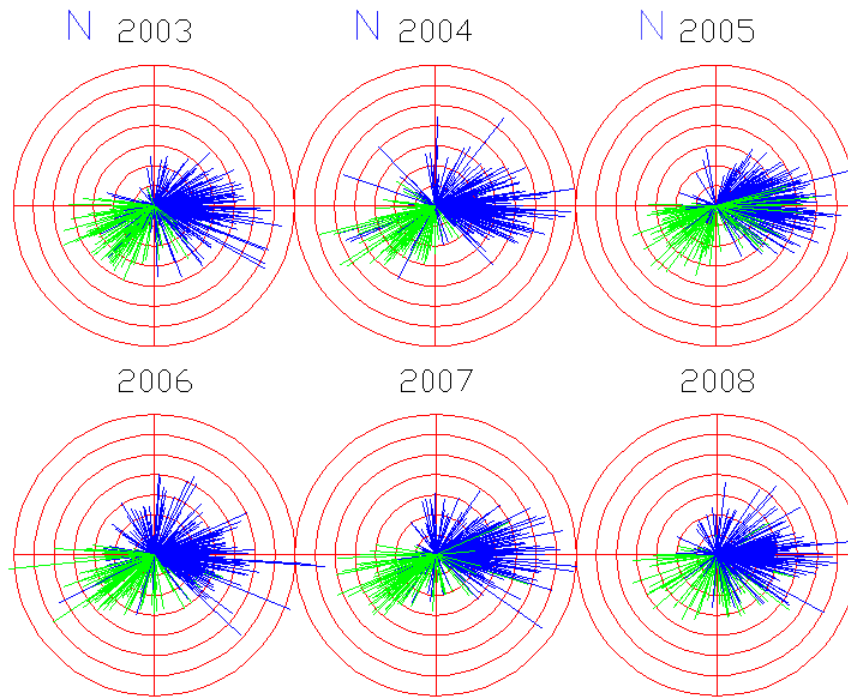


Figure 12: wind vectors from 2003 to 2008.

4.6 Waves

The following figure shows waves data gathered by Young (1999) for a ten year period for each world regional zone. This data was adopted from EIA report for development of B. Voavah as a luxury tourist resort (2015). In this research by Young Wave height was measured by satellite (Radar Altimeter), whereas a global wave model was used to precise wave directions. It indicates that dominant swell waves during the SW monsoon comes from SW and during NE monsoon from the NE. The peak wave height according to this model is in June with 1.8 meters. This corresponds with the roughest weather days for Maldives, which is roughly June and July.

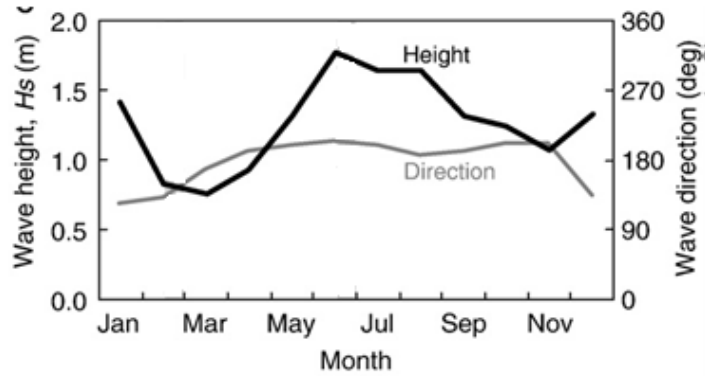


Figure 13: Ten year mean monthly wave height and direction for the central Maldives. Source: Young (1999).

4.7 Hazard Vulnerability

The proposed location for powerhouse is not vulnerable to storm surges. According to the locals of Hithaadhoo there have been no reports of floods or inundation during storm surges. However upon inspection of the coast near the powerhouse location, the area seems to be eroding. Therefore it is advisable to put in some form of coastal protection measures to this area.



Figure 14: erosion at the proposed powerhouse location

4.8 Water Quality

4.8.1 Sampling method

2 water sample was taken from two houses; Rosemid and Bodukaashige. 1 water sample was taken from the council which is very close to the proposed powerhouse location. Water from the well was collected from a tap. Water sampling bottle was rinsed 3 times from the well water.

Water sample was collected in a 1.5 mL plastic bottle on 21st April 2016. The bottle was transferred to Male’, which was later tested at MWSC laboratory.

4.8.2 Sampling location

Following table shows the locations from which water samples were taken.

Table 3: geocoordinates of water sample location

Location	Longitude	Latitude
Council (near Proposed Powerhouse location)	72.92296633645788	5.009035792384418
Rosemid	72.92399738954927	5.006558464339459
Bodukaashige	72.92319100250617	5.007954299886233



Figure 15: water sample locations

4.8.3 Results

Table 4: water sample results

Location	Council (near Proposed Powerhouse location)	Rosemid	Bodukaashige	Optimal Range	Reference
Conductivity(μs/cm)	298	873	788	<1500	EPA
pH	7.77	7.20	7.35	6.5-8.5	EPA
Salinity (‰)	0.14	0.44	0.39	NA	EPA
Temperature(°C)	24.9	23.7	23.7	NA	EPA
Total Petroleum Hydrocarbon (mg/L)	0.11	0.16	0.16	NA	EPA

Conductivity and pH of water is within EPA drinking water standards. Hydrocarbons were found at all three samples tested.

4.9 Vegetation

4.9.1 Method

The vegetation cover at the proposed powerhouse location was determined visually. All the trees within the site were counted. The geo-coordinates of the proposed powerhouse location is shown in table 5.

4.9.2 Results

There are 3 *Cocos nucifera L.* within the plot given for the development of powerhouse location. High density of *Cyperus polystachyos* and *Launaea sarmentosa* was found growing on the ground.



Figure 16: high density *Cyperus polystachyos* and *Launaea sarmentosa* growing on the ground

There are no trees except for the 3 *Cocos nucifera L.* and small stack of *Scaevola taccada*. The types of plant remaining on the plot is shown on table 5.

4.9.1 Dhivehi names for the vegetation

Table 5: Dhivehi and scientific names for plants

Scientific Name	Dhivehi Name
<i>Clitoria ternatea</i>	Nanreethimaa
<i>Cyperus polystachyos</i>	Kiruthundi / kunaa hai
<i>Cocos nucifera L.</i>	Ruh
<i>Launea sarmentosa/syn.L.pinnatifida</i>	Kulhlhafilaa
<i>Scaevola taccada</i>	Magoo
<i>Wedelia calendulaceae/W.biflora</i>	Mirihi



Cyperus polystachyos

Launaea sarmentosa



Scaevola taccada

Cocos nucifera L.

Clitoria ternatea



Wedelia calendulaceae

Figure 17: types of plants in plot given for powerhouse development

4.10 Noise level

4.10.1 Method

Noise level was measured using a hand held decibel meter. The average readings were recorded at the existing and proposed powerhouse location. The geo coordinates of the locations are shown below.

Table 6: geocordinates of noise level measurement locations

Location	Longitude	Latitude
Proposed powerhouse location A	72.92220781335705	5.0097244981308
Proposed powerhouse location B	72.92221365387954	5.009881387008603
Proposed powerhouse location C	72.92205554614247	5.009875071120069
Proposed powerhouse location D	72.92206284576007	5.009740837550886
Residential area A (near proposed powerhouse)	72.92260197186519	5.008948965801449
Residential area B (near proposed powerhouse)	72.92244265008442	5.009001861478806
Residential area C (near proposed powerhouse)	72.92397013891608	5.006200533899992
Residential area D (near proposed powerhouse)	72.92408618868082	5.006152366887636
Residential area E (near proposed powerhouse)	72.92413423888522	5.006269468256074



Figure 18: noise level measurement locations

4.10.2 Results

Table 7: results of noise level measurements

Location	Average Noise level (dB)
Proposed powerhouse location A	43
Proposed powerhouse location B	48
Proposed powerhouse location C	48
Proposed powerhouse location D	53

Residential area A(near proposed powerhouse)	32
Residential area B (near proposed powerhouse)	44
Residential area C (near proposed powerhouse)	78
Residential area D (near proposed powerhouse)	78
Residential area E (near proposed powerhouse)	72

Noise level within the vicinity of the existing powerhouse is very high. It is because the generators are not inside a standard powerhouse that the noise level within the nearest residential area also high. Noise level near the proposed powerhouse location is very low (43 db).

4.11 Air quality

4.11.1 Method

Air quality was measured using wolfsense air quality meter. Readings were recorded at the existing powerhouse and near the proposed powerhouse location. The geo coordinates of the locations are shown below.

Table 8: geocoordinates of air quality measurement location

Location	Longitude	Latitude
Air quality measurement 3 (proposed powerhouse location)	72.92203842087365	5.009837915794686



Figure 19: air quality measurement location

4.11.2 Results

Table 9: air quality results

Location	Parameters			
	No ₂ / ppm	Nitric Oxide / ppm	So ₂ / ppm	Ozone / ppm
1	0	0	0	0
2	0	0	0	0
3	0	0	0	0

4.12.2 Community needs

Hithaadhoo council highlights that the most important needs right now for the island is Sewerage services and improvements in education.

4.12.3 Main economic activities

Most of the locals work in nearby resorts for income generation. Fishing is practiced to a lesser extent. Yellowfin tuna is the main existing fishery. Agriculture is done at household level. Thatch production is also done.

4.12.3 Proposed projects

Council highlighted that a business point will be developed near the harbor which will include retail and guest shops.

5.0 LEGISLATIVE AND REGULATORY CONSIDERATIONS

5.1 Law on general public services (4/96)

Under this law the general public services are electricity, telephone, water and sewerage services.

Article 3 states that any party can provide general public services only after getting registered in the competent authority and according to its regulations.

Article 4 states that any public service must be provided after a contract agreement has been made between the service provider and the customer. The agreement must be made according to the regulations put forward by the competent authority.

Article 5 states that a transfer of service between customers must be made only after a contract has been made between the customers according to the service providers regulations. If the customer fails to comply with the agreement, the service provider can discontinue service only after approval from competent authority.

Article 7 states that the service provider can permanently discontinue its services according to regulation mentioned in article 3 of this law. However temporary discontinuation can be made after giving prior notification to the customers and according to the agreement made between the service provider and the customer.

Article 8 states that the tariffs for the services must be approved from the competent authority prior to implementation. Further, any amendments to tariff structure also must be approved from the competent authority before implementation.

Article 9 states that any damage made to service provider's facilities by anyone, he can be charged with 10 prison penalty or banishment. Further any action against this law (excluding what is mentioned in article 9(a) of this law) can be charged between MVR 100 to MVR 5000 by the competent authority.

5.2 Law on Environmental Protection and Preservation of the Maldives (4/93)

The Maldives law of environmental protection and preservation was enacted to protect the environment and its resources for the current and future generations.

Article 2 states that the instructions for environmental protection will be given from the competent authority and everyone must respectfully follow these instructions.

Article 3 states that all matters relating to environmental protection and preservation must be handled by the Ministry of planning, human resource and environment.

Article 4 states that Ministry of planning, human resource and environment must declare protected sites and species and formulate the regulations to manage them. If any other party wants to declare a protected site or species they must be registered in the Ministry of planning, human resource and environment and managed according to regulations made by the Ministry.

Article 5 states that any projects which pose significant impacts to the environment, an Environmental Impact Assessment report has to be made and submitted to the Ministry of planning, human resource and environment. The projects which require Environmental Impact Assessment and the regulation must be made by Ministry of planning, human resource and environment.

Article 6 states that if any project is found to cause significant adverse impacts, Ministry of planning, human resource and environment have the right to stop the project.

Article 7 states that any waste, oil or hazardous gas must not be dumped into any part of the Maldives, however if strictly needs to be disposed it should be disposed off in an area designated by the Government. If such hazardous gas, waste or oil is to be disposed by combustion, it should be done in a way it does not impact people’s health and environment.

Article 8 states that any hazardous waste must not be disposed into any part of the Maldives. Before trans-boundary transfer of such waste, approval must be taken from the Ministry of Transport and Communication by writing to the Ministry at least 3 months beforehand.

Article 9 states that anybody who violates this law or any regulation under this law punishable to no more than MVR 100 million according to the offence. The fine will be done by the Ministry of planning, human resource and environment.

Article 10 states that any offence to this law or any regulation under this law or any action resulting in environment damage, the price for such damages can be taken through the judicial processes.

5.3 1st addendum to Environmental Protection and Preservation of the Maldives (4/93) law no 12/2014

Article 3 and 11 of the Environmental Protection and Preservation Act (4/93) of Maldives is amended as follows;

In article 3 all matters relating to environmental protection and preservation must be handled by the Ministry charged with implementation of environmental policy.

5.4 Environmental Impact Assessment Regulation 2012

The EIA Regulation, which came into force in 2007, has been revised and the revised EIA Regulation 2012 is currently in force since May 2012. The Regulation sets out the criteria to determine whether a development proposal is likely to significantly affect the environment and is therefore subject to an EIA. Schedule D of the EIA Regulations defines the type of projects that would be subject to Environmental Impact Assessment. Harbors, dredging and land reclamation is among those. The main purpose of this Regulation is to provide step-by-step guidance for proponents, consultants, government agencies and general public on how to obtain approval in the form of an Environmental Decision Statement.

With the 2nd addendum to the environmental impact assessment regulation 2012 in 30th August 2015, there were some procedural changes made to the EIA process. The most important was the shifting of tourism related development projects EIAs to the Ministry of Tourism. Other than that slight changes were made to the process such as the finalization of the ToR during the scoping meeting(article 11(b)) and changes in the fees for the review processes under three different categories (article 7(c)).

Under article 8(a) the decisions for a screening form is as follows;

- 1) Environment Management Plan
- 2) Initial Environmental Examination
- 3) Environmental Impact Assessment
- 4) Approval to go forth with the screened project
- 5) Approval to go forth with the project according to the mitigation measures proposed by EPA

Under article 9(b) the decisions for an IEE is as follows;

- 1) Environmental Impact Assessment report if the project is anticipated to have major environmental impacts
- 2) Environment Management Plan
- 3) Approval to go forth with the project if the project is not anticipated to have major environmental impacts

Under article 10 two reviewers are required to review the Environmental Management plan. The reviewers are to be selected according to article 13(b) of the regulation.

Since the development of new powerhouse is in the inclusive list, an EIA report needs to be submitted to the competent authority before the implementation of the project. An EIA application form was submitted to the EPA and a scoping meeting was held on 16th March 2016. During the meeting the ToR for the project was issued. The EIA report is this document and will be submitted to EPA for approval.

5.5 Waste management regulation

The waste management regulation dictates the principles needed to follow when handling waste. The aim is to minimize adverse impacts to the environment and human health from waste.

Article 6 states that the waste management hierarchy is as follows;

1. Waste collection
2. Waste transportation by land or air
3. Treatment of waste
4. Storage of waste
5. Management of waste site
6. Landfill
7. Management of hazardous waste

The island councils are required to make a waste management plan and submit it to the competent authority. This plan must be reviewed at least every five years.

Article 8 states that hazardous waste are specified in annex (J) and under no circumstance should it be burned or disposed off in any area of the Maldives. While transporting hazardous waste, it must be in a closed container without any leaks. Further a sign must be on the container, specifying that it is hazardous waste. The import of any hazardous waste to Maldives is an offense.

Article 9 states that depending on the type and volume of waste, if it poses any threat to human health and the environment, the competent authority has the right to declare that particular type of waste as special waste. The current list of special waste is in the annex (B) of this regulation. Under no circumstance should special waste be imported to Maldives, burned, transported, recycled, recovered or treated without prior approval from the competent authority. In order to get the approval, the form in annex (F) of this regulation must be filled and submitted with an administrative fee of MVR 500 to the competent authority. Further, special waste must be stored only in designated places by the competent authority, the design conditions of the storage facility is specified in annex (C) of this regulation.

Article 10 states that the principles regarding extended producer responsibility must be declared and gazette within one year after this regulation comes into force.

Article 11 states that waste generated at islands must be disposed off in areas specified for the purpose or areas approved by competent authority. Disposal of waste to following areas is prohibited under this regulation and is an offense;

- Mangroves
- Island Lagoon
- Reef
- Lagoon(falhu)
- Finolhu
- Beach
- Vegetation line
- Harbor
- Park
- Road

Approval to dispose waste to areas not approved by competent authority will be given under following circumstances;

1. Waste is disposed as a measure to protect human health
2. Situation created by natural disaster or a state of emergency

Approval to manage waste at household level is not required for the following actions;

1. Waste segregation at household
2. Composting at household

Article 12 states that anybody responsible for public sites must place and manage a dustbin. The waste in these dustbins must be managed according to this regulation. Disposal of waste to public sites (besides the dustbin) is an offense.

Article 13 states that any sea vessel must have mechanism to store waste until it reaches a harbor. Upon arrival at a harbor the boat captain must take the waste to an area designated for waste disposal. However biodegradable waste such as kitchen waste and fish mulch can be disposed at sea.

Article 14 states that a waste management system must be established at all harbor's by the operator. A proper system must be in place to manage waste oil and other wastes segregated. Further, the operator must maintain information mentioned in annex (E.) and the records must be made available to competent authority upon request.

Article 15 states that any party who wants to commercially recycle and recover waste, approval must be taken from the competent authority by submitting the form in annex (F) and proposal according to annex (D) of this regulation.

Article 16 states that approval must be taken from the competent authority for the following waste management works

1. Waste collection
2. Transportation of waste by land and sea
3. Waste treatment
4. Storage of waste
5. Management of waste disposal sites
6. Landfill
7. Handling of hazardous waste

The number of waste management approvals for a particular area or areas will be decided by the competent authority based on the following;

1. Waste generation
2. Economic gains from waste management actions
3. Environmental protection requirements for the area

Article 17 states that the parties who get approval to manage waste must operate according to the competent authority’s directions under article 6 of this regulation. Any action not mentioned in the article 6 can be actioned by prior discussion and approval from the competent authority in order to protect health and environment. Such actions by the island council or city council must be advertised publicly.

Article 18 states that the approval for waste management must be given for a set duration. The proponent must apply for renewal of the approval before 3 months of approval due date. Approval will be renewed only if the proponent actions were according to the conditions of the given original waste management approval.

Article 19 states that if a proponent wishes to do more than one of the works mentioned in article 16(a) of the regulation, they can submit a single form for all the works.

Article 20 states that if a proponent wishes to transfer the waste management approval to another party, then they must submit the form in annex (G) and submit any further information the competent authority requests. Within 30 days of submission of the form, the competent authority will issue the approval.

Article 21 states that if a proponent wishes to terminate an approval, they must submit the form in annex (H) of this regulation. The approval will be terminated after the competent authority has ensured that the waste management actions have been done according to the regulations by the proponent.

Article 22 states that an administrative fee (mentioned in annex-J of this regulation) has to be paid to the competent authority while applying for waste management approval.

Article 23 states the proponent can take a fee from the customer given that the fee structure is approved from the competent authority. The proponent can make a distinction in the maximum price for houses and business category. The declared fee structure must be advised publicly to the customers.

Article 24 states that the competent authority must maintain a record of the approvals given.

Article 25 states that when transporting waste the best practices outlined in article 6 of this regulation must be strictly followed. Waste generated at inhabited islands and islands given for commercial use must be transported to the regional waste management facility.

Article 26 states that the parties given approval to transport waste must abide by the following;

1. Before transporting waste to a particular site, they must ensure that the type of waste is allowed to be disposed to the site
2. Records of waste transportation must be maintained according to annex (E) of this regulation and these records must be provided to competent authority when they are requested.

Transport of waste to disposal site from households by another party without giving a fee, is excluded from this article.

Article 27 states that before transport of hazardous out of Maldives, approval must be taken from the competent authority by submitting the form in annex (G) of this regulation before 3 months of the transportation date. When applied for this approval, the competent authority will respond according to the following;

1. Rejection, if the activity is against any principles made by the competent authority under article 6 of this regulation or any international treaties signed by Maldives
2. Resubmission of form, if there is missing information or if the credibility of the information submitted is questionable.
3. Approval, if the activity is accordance with the principles made by the competent authority under article 6 of this regulation and international treaties signed by Maldives.

Approval given under this regulation does not mean that any other approval required from other countries will not be required.

Article 28 states that before transport of hazardous waste through any area of Maldives, approval must be taken from the competent authority by submitting the form in annex (L) of this regulation before 3 months before waste arrive in Maldivian waters. When applied for this approval, the competent authority will respond according to the following;

1. Rejection, if the activity is against any principles made by the competent authority under article 6 of this regulation or any international treaties signed by Maldives
2. Resubmission of form, if there is missing information or if the credibility of the information submitted is questionable.
3. Approval, if the activity is accordance with the principles made by the competent authority under article 6 of this regulation and international treaties signed by Maldives.

Approval given under this regulation does not mean that any other approval required from other countries will not be required. Any vessel that enters Maldivian waters through the approval in this article must not dock in any area of the Maldives. Further if a need arises to inspect the vessel, the party who got the approval must arrange it.

Article 29 states that the party in charge of the management of waste disposal sites must take the approval from the competent authority according to the article 6(a) of this regulation. The management must submit the form in annex(E) of this regulation every 4 months. If the people who come to dispose waste does not go against the principles set by the waste disposal site management, refusing to accept their waste is an offense. The waste disposal site managers must publicly advertise the service hours and rules.

Article 30 states that the competent authority must maintain the records of administrative decisions.

Article 31 states that the competent authority must inspect the waste management sites. Inspection shall be done according to an inspection schedule made by the competent authority. The official from the competent authority may present his monitoring license and then do the monitoring of the site. After inspection of a site, the competent authority must compile an inspection report according to annex (M) and send it to the managers of the site within 7 days. The inspection report must contain any corrective actions to be taken with the due dates for the actions. The managers of the site must implement any corrective actions on specified in the inspection report on due time.

Article 32 states that the competent authority must maintain a database containing information about waste generation (at island level, regional level and country level), type of waste and treatment processes.

Article 33 states that the competent authority must submit a report based on the information on the database mentioned in article 32 annually.

Article 34 states that not following any action mentioned in this regulation is an offense. Further doing any of the following is punishable under EPPA 4/93 article 9(b). The penalty for these offenses will be determined according to annex-(N).

- Import of special category waste or hazardous waste to Maldives
- Transport or treatment of special category waste without prior approval from competent authority
- Disposal of waste to any site which is not approved for waste disposal from competent authority
- Refusing to allow customers to dispose their waste when they have not gone against any rules set by the waste management site managers.
- For any works requiring approval carrying out the works without approval from competent authority
- Managing waste against the principles set under this regulation
- Handling waste against the principles set under this regulation
- Transport of hazardous waste out of Maldives without prior approval from competent authority
- Managing waste against the conditions of a given waste management approval
- Failure to provide information or providing wrong information by any party given approval for waste management
- Failure to manage a public site according to article 12(a) of this regulation by the party responsible for the management of the public site

Doing any of the following is punishable under EPPA 4/93 article 9(a).

- Disposal of waste to an area under article 11(b) of this regulation
- Disposal of waste to a public site (other than the dustbins specified for waste disposal in the area)

The fines for the offenses under this regulation will be decided by the Ministry. The fines will have to be paid to the respective island or city council in the area where the offense was done.

Article 35 states that the competent authority has the right to terminate any approval given under article 16(a) of this regulation with reference to the following;

1. The competent authority finds enough evidence for the incompetence of the waste managers.
2. The works are against this regulation or any other laws

3. Failure to correct the problems mentioned in the inspection report submitted according to article 31 of this regulation

Article 36 states that the arbitration for a decision by competent authority must be made in writing to Ministry within 10 working with a full justification. The reply for the arbitration must be informed within 30 working days by the Ministry.

5.6 Regulation on provision of electricity to Male’ and islands

This regulation is made in accordance to article 3 of law on general public services (number 4/93).

Article 1 states that electricity service can be given only after the service provider is registered in MEA.

Article 2 states that an agreement has to be made between the service provider and the customer for the provision of electricity services.

Article 3 states that any MEA approved electricity service provider can give their ownership to another party only after getting approval from MEA. If any customer wants to change ownership then they must get the approval from the electricity service provider and also make an agreement.

Article 4 states that if a customer breaches the agreement in any way, electricity services must be discontinued after getting approval from MEA.

Article 5 states that for any reason electricity services can only be completely discontinued after getting approval from MEA. However temporary discontinuation of services for the purpose of maintenance work or in accordance with the agreement made between service provider and customer is acceptable under this regulation. In such a case also the customer must be notified in advance. Nonetheless emergency discontinuation of electricity is excluded.

Article 6 states that the tariff for electricity must be approved from MEA.

Article 7 states that the regulations under the agreement between electricity service provider and customer must be approved from MEA.

Article 8 is about the technical specifications of powerhouse. The following is stated under this article;

- The engine must be mounted on a foundation and anti-vibration should be also mounted between the engine and the foundation.
- The exhaust pipe must be 24 feet high from ground if the power house is 14 feet high. For powerhouse higher than 14 feet, the exhaust must be at least 4 feet higher than from the highest point of the roof.

- The power house must be constructed and maintained in a fire resistant manner with walls fabricated and iron roofing.
- The powerhouse must be constructed 200 feet away from the nearest residential area. If there is not enough space available in an island then MEA will declare the area for powerhouse construction.
- The ventilation of the powerhouse must be such that when all the engines are operational the difference in temperature inside and outside the powerhouse must be less than 10 °C compared to ambient temperature.
- Power house construction, fuel storage and handling must be in accordance with pertinent regulations. If there is not pertinent regulation such an activity must be done after consulting with the relevant Ministry and there decision must be submitted to MEA.
- Firefighting equipment must be in accordance to NSS specifications.
- Powerhouse must be wired according to article 12 of this regulation.
- Fire safety notifications must be pasted on easily seen areas of the powerhouse.
- Emergency lights must be mounted such that works inside powerhouse can be done during a power outage.

Article 9 is about the technical specifications of control room, switch board, and distribution feeder. The following is stated under this article;

- Control room and distribution feeder must be in accordance to MEA approved drawings.
- Switch board and panel board must be constructed to MEA standards and must be tested from MEA and approval must be obtained. Wiring details must be submitted.
- Switch board rear end and sides must be closed in way people do not get electrocuted.
- The switch board must include and fulfill the following;
 - Incoming breaker: must be capable of taking 10% – 50% of generated rated current
 - Incoming indication light
 - Phase neutral and phase voltage must be visible
 - Three phase ampere must be visible
 - Able to see generator frequency
 - Able to see generator kilowatt
 - Able to generator energy
 - Earth float protection
 - Breakers capable of handling load for outgoing feeders
 - If there is more than one generator, synchronizing panel or change over switch with capacity to handle 125% of largest generator
- Drawings of panel wiring must be pasted in control room or any other visible area.
- Drawings for First aid instructions must be pasted on control room and engine room.
- Firefighting equipment’s must be readily available to staff in control room

Article 10 is about the technical specifications of the distribution system. The following is stated under this article;

- At any point on the distribution, voltage must not be less 10% of generated voltage
- If distribution is to be made via overhead cables then the drawings must first approved from MEA. The poles can be either metal or wood with a diameter of 4 inches.
- The distance between two poles must be a maximum of 75 feet. The poles must be 1.5 feet from the wall of residential houses.
- The cables must be at least 14 feet from the ground. The distance between the must not be closer than 1 feet.
- Insulation must be in between the cables and the poles. The cables must be capable of handling 25% more of normal load.
- If there are any building as high as the power lane, then the lane must be insulated extending up to 5 feet from the building. After installation of lane it must be maintained to prevent tress from falling over.
- Works must be done on a live lane with proper safety equipment’s like insulated gloves, insulated boots, and safety helmets.
- Work must not be done alone on a live lane. While working on a ladder, the ladder must be secured properly.
- If the distribution system is to be under the ground then the cable technical standard is BS6346 or international accepted standard.
- While laying the cable care must be taken not to damage the outer insulation of the cable. Cable should be buried on 1/3rd of the road at depth of 2.5 feet.
- After laying the cable, before backfilling sand must be laid up to 6 inches height and a tape notifying a cable is below must be laid.
- Cable joints must be done by MEA approved personals. The joint should be made by using heat shrink or resin.
- The distributions box’s single line diagram must be approved from MEA and the box should be constructed in accordance to the diagram.
- The distribution box must be weather proof. The box must be constructed with a non-conductive material and its inside must have holes for air circulation.
- The distribution box must be secured with bolts 3 feet above the ground from the bottom of the box. The house connection cable from the distribution box must be inside a pipe or duct.
- The house connection supplies inside the distribution box must be properly secured such that it does not produce any sparks.
- Every distribution box must have a caution notice saying “Danger 400 V”.

Article 11 is about the technical specifications of the house connections. The following is stated under this article;

- The wiring of the houses must be in accordance with article 12 of this regulation.
- At any customer house, there has to be overload protection (cut out fuse MCB, MCCB), earth float protection (ELCBLR) and isolation (main switch) must be installed.
- To all electricity service provided places, a supply drawing must be made. No connection must be made without a drawing.
- Electricity service must be provided with the installment of a meter. The meter must be tested from an MEA approved place. ELCB must also be installed in this manner.

Article 12 is about the wiring standards. The following is stated under this article;

- Electrical wiring must be done by MEA approved professionals.
- Color codes for single phase wiring is; red for phase, black for neutral, green or green with yellow stripes for earth.
- Color codes for three phase wiring is; red for first phase, yellow for second phase, blue for third phase, black for neutral, and green or green with yellow stripes for earth.
- While three phase wiring, if the colored cables are not available sleeving must be inserted on both ends of the cable to identify the color codes.
- For three phase wiring, the load must be balanced to the 3 phases.
- The earth for a building must be connected using an appropriate thickness for the building. Main earth to the ground must be extruded from the specified area from the main switch or D-Board. A lug must be installment before connection of earth cable to earth rod. Earth must be fixed inside a closable junction measuring 8”x8”.
- In all wiring a D-board, main switch and ELCB must be installed. ELCB must be installed after testing from MEA approved place. In single phase places there must be a minimum of one socket with 2 lightings. In three phase places there must be a minimum of 3 socket with 6 lightings.
- ELCCB rating if single phase;
 - trifing - current 30 mA
 - 240V rated current – 30A to 63A
 - 2 pole
- ELCCB rating if three phase;
 - trifing - current 30 mA
 - 440V or 380V
 - 40A – 63A

- 4 pole
- If a lower rated ELCCB is to be used then its tripping current must not be higher than 30mA.
- All cables to D-board must have a phase and earth cable. The CB or fuse installed must be appropriate to the circuit. It should not be higher than required.
- Only basbar should be used in D-board. Loofing of the cable shall not be done instead of using basbar. Three phase D-board basbar link must be installed with appropriate gap between two phases.
- If cable diameter is 3/029 or 1.5 mm², circuit must have 5 lightings(fans can be included). However the load from this circuit must not exceed 500W. In socket circuits the cable diameter must be higher than 7/029 or 2.5 mm². The circuit must have 2 sockets if cable used has a diameter of 7/029 or 2.5 mm².
- While wiring if 2 or more gang switch is used, not more than one phase shall be connected to the switches(inside the same box).
- In a single phase circuit, instead of 30A main switch a, an MCCB rated higher than 2 pole 40A should not be installed. If three phase circuit, instead of 60A switch , an MCCB rated higher than 60A 4/3 pole should not be installed. If main switch is to be installed on D-board it should be between 5 and 6 feet from ground.
- All cables must be inside a condute pipe or protective piping like plastic pipe. If cables are not inside a pipe it should be secured using cable ties.
- Current for Air condition, freezer, and other higher load appliances must be given from points which is wired on separate circuit.
- Wiring to machineries must be done using appropriate cables via starter or main switch. Starter or main switch must be installed in a nearby area to workplace from where it can be operated easily.
- The installed D-board edge must be no higher than 6 feet.
- Water proof switches must be used in wet places like the toilets. If another type of switch is to be installed it must be in an area where water cannot reach.
- When using sockets without switches, there has to be a switch. Generally sockets without switch is not approved.
- Wirings in huge buildings, between phase neutral, phase earth, neutral earth resistance must be a minimum of 1 mega ohms. For wiring of less than 5 points if the resistance is 1 mega ohms it will not be accepted. For these type of places the resistance must be 10 mega ohms.
- If a customer wants to use a back up generator during an emergency, current shall be used using change over switch. Change over switch must be capable of cutting phase and neutral. Further the rating must be appropriate to the load of the place.

- If a customer wishes to add new wiring to existing MEA approved wiring, then it shall be done by MEA approved personel after wire testing. MEA unapproved wiring must not be connected to D-board.
- If a wiring done by a personel is found to be wrong, the responsibility must be taken by the person who signs on the wire testing form.

Article 13 states that the staff in powerhouses must be properly trained personals for the job. The highest responsible person in the powerhouse must have an MEA approved level of training. All staff in powerhouse must be trained for firefighting. Besides staff other people should not be allowed inside the engine room. Control room staff must have completed the basic fire extinguish and prevention course by Ministry of Defense and National Security.

Article 14 states that all MEA approved wiring professionals must follow this regulation. Wiring done against this regulation will not be accepted. Further, during wire testing if it comes to MEA notice that wiring done by a particular person has many issues his/her license maybe terminated.

Article 15 states that places wired before 1st January 1997 shall be advised to correct its wiring during a given time upon inspections by MEA.

Article 16 states that any breaches to this regulation are punishable by a fine of MVR100 to MVR5000.

5.7 Guideline for power system approval

The guideline for power system approval highlights the set of information required to be submitted to MEA for the approval process. Which includes details about the generation system, generator control panel and distribution panel, fuel system, distribution network, electric cable, firefighting system and lighting protection, environmental impact assessment of the generation facility, tariff and rules and regulations of powerhouse for consumers.

6.0 POTENTIAL IMPACTS AND MITIGATION

The impacts from any project can be categorized into two broad categories; impacts during construction and impacts during operation. Impacts during construction are the potential impacts which might arise during the construction of new powerhouse. Impacts during operation are the potential impacts which might arise during the operation of the new powerhouse.

6.1 Impact identification methodology

The potential impacts were identified by looking in to the proposed works under this project and comparing it with the environmental setting. An impact matrix with reference to magnitude, extent or location, duration, reversibility and likelihood was used to determine the significance of the impacts. Further, expert judgment, field surveys and other similar EIA reports were used as a reference. Table below shows the characteristics of impacts against which it was analyzed.

Table 11: impact characteristics, where 5 is of highest significance.

Characteristic	Impact significance					
	0	1	2	3	4	5
Type	Direct/indirect					
Nature	Negative/positive					
Magnitude	Negligible	low		moderate		High
Extent/location		small area covered		moderate area covered		large area covered
Duration		very short	Short	intermittent	Long-term	continuous
Reversibility			reversible			irreversible
Likelihood	none	low probability		moderate		high probability

6.2 Limitations in impact prediction

While all attempt has been made to accurately predict the potential impacts from this project, there are unforeseen uncertain factors which might causes deviations in the impacts outlined herein. For instance a natural phenomenon.

Further there is the limitation in our knowledge itself about the environment. Even though thorough brainstorming was done to assess the potential impacts there might always be some impact which is not accounted for because it has not been noticed.

In addition there is an information gap; there is limited information about the condition of the marine environment prior to anthropogenic disturbances. This makes it very difficult to ascertain a baseline.

6.3 Impacts during Construction

During construction the primary impact zone would be the powerhouse premise shown on figure below. This would include impacts on quality of air, water and terrestrial environment. The secondary impact zone would extend near to the nearest residential area. This would be impacts on air quality.



Figure 20: impact zone during construction. Orange; is primary impact zone and yellow; is secondary impact zone

	Type	Nature	Magnitude	Extent/location	Duration	Reversibility	Likelihood	Significance
Air quality -GHG emissions	Direct	Negative	Negligible	Localized to power house area	Short-term	reversible	High	Low
Water quality -oil spills -chemical spills	Direct	Negative	Low	Localized to power house area	Short-term	Irreversible	Low	High
Impacts from Waste -solid waste generation -hazardous chemical waste generated	Direct	Negative	Low	Localized to power house area and work force	Short-term	reversible	High	Moderate
Terrestrial environment -loss of vegetation	Direct	Negative	None	Localized to power house footprint	Long-term	Irreversible	High	Negligible

6.5 Impacts during operation

During operations primary impacts would be to the powerhouse. While the secondary impacts would be to the entire Hithaadhoo island community as the positive impacts will spread to the entire community.



Figure 21: impact zone during operations. Orange; primary impact zone and green; secondary impact zone

6.5.1 Impacts on water quality

During the operation and maintenance of the generators there is a small risk of water contamination by accidental spills. Impacts from any spills will be localized to powerhouse area and will be irreversible.

Even though the likelihood of an oil spill occurring is low due to the irreversibility of the impact it is of high significance.

Mitigation measures

Regular maintenance of machinery.

Following chemical handling procedures.

Staff training on emergency oil spill cleanup.

Emergency response plans made for powerhouse operation.

Oil spill cleanup materials made available to the powerhouse.

6.5.2 Impacts on air quality

The operation of the power house is not expected to increase the impacts on air quality as already existing generators will be run at the powerhouse. The operation of the 410 KW generators will produce smoke and greenhouse gases. However as the power house is an estimated 300 feet away from the nearest residential house and the location of powerhouse near the coast, it is expected that the smoke will not impact the community in anyway during the SW monsoon. However during NE monsoon smoke maybe blown inland. Even though smoke maybe blown towards the residential houses, it is expected that the disturbance to residents will be minimal as the smoke will be diluted and also will be high above ground as the chimneys of the powerhouse will be 28 feet high.

Due to the low magnitude and location of powerhouse (near coast away from residential area), the impacts on air quality is considered to be of low significance.

Mitigation measures

Regular maintenance of generators.

Chimneys constructed according to MEA standard

6.5.3 Noise disturbance

With the operation of new powerhouse the noise disturbance to the community will be levitated completely. Currently the generators are operated in a facility which is in the middle of residential area. But with the operation of new powerhouse the generators will be operated inside a sound proof powerhouse away from residential area.

The powerhouse is located 300 feet (estimated) away from the nearest residential house, hence noise disturbance to community will be negligible. However the noise level inside the powerhouse will be very high. Therefore the staff working inside the powerhouse will need to wear noise cancellation headphones.

Even though the significance of noise disturbance to community and wildlife is negligible the noise disturbance to staff working in the powerhouse will be high.

Mitigation measures

Wear noise cancellation headphones while inside plant house.

6.5.4 Socio-economic impacts

The new powerhouse will increase the reliability of electricity service of the island. Since the generators in Hithaadhoo is currently in a very old facility, without any sound proofing the noise disturbance to neighboring houses is very high. With the development of new power house, the noise disturbance to community will be avoided.

Since this impact is a positive long-term impact to the entire island community, it is of high significance.

6.5.5 Health

There are health implications to the staff working in the powerhouse during operations. During the operation and maintenance of the generators and other machinery they will come in contact with grease, oil, grit and other hazardous chemicals. If proper personal protection wears are not worn it will have adverse impacts to the health of staff. However there is little risk if the proper personal protections are worn and established chemical handling procedures are followed.

Mitigation measures

Following chemical handling procedures.

Wear essential personal protection attire at all times.

Health and safety manuals made for the plant.

Staff trainings on chemical handling.

Emergency response plans made for plant operation.

6.5.6 Impacts from Waste

Waste oil generated from the generators pose risk to environment if it is not managed properly. It is estimated that an average of 98 liters per month is generated. Currently waste oil is given freely for the locals.

Mitigation measures

Waste oil must be stored in closed labelled containers

6.5.7 Fire hazard risk and safety

During the operation, the risk of fire is always there and will cause a considerable damage to the physical and social environment. Depending on the degree of fire, the impact could be low to very high.

Mitigation measures

The new facility will have firefighting equipment within the power plant house and within the administrative building. In addition, signs for the emergency procedures will have to be in the vicinity clearly marking where the exits and firefighting equipment's are.

6.6 Impacts summary

Following table shows the impacts summary during the operational phase.

Table 13: summary of impacts during operation

Impact	Impact Characteristics							Significance
	Type	Nature	Magnitude	Extent/location	Duration	Reversibility	Likelihood	
Water quality -oil spills	Direct	Negative	low	Localized to power house area	Long-term	Irreversible	low	high
Air quality -GHG emission	Direct	Negative	Low	Localized to power house area	Long-term	reversible	High	Low
Noise disturbance -noise disturbance to staff	Direct	Negative	Low	Localized to power house inside	Long-term	Reversible	High	High
-noise disturbance to wildlife	Direct	Negative	Low	Localized to power house area	Long-term	Reversible	High	low
-noise disturbance to community	Direct	Negative	Low	Localized to power house area	Long-term	Reversible	High	Negligible

Socio-economic - reliability of electricity services	Indirect	Positive	High	Entire Island community	Long-term	Reversible	High	High
Health -health implications to staff	Direct	Negative	Subjective of the scale of spill	Powerhouse	Short-term	Irreversible	Low	High
Waste -waste oil	Direct	Negative	Moderate	Powerhouse	Continuous	Reversible	Low	High
Fire hazard risk and safety	Indirect	Negative	High	Entire Island community	Continuous	Reversible	Low	High

7.0 ALTERNATIVES

7.1 No project scenario

The no project scenario means that the new power plant will not be installed in Hithaadhoo. This means that the disturbance to the community will not be mitigated. Further, this would lead to reduced reliability of electricity services to the island. FENAKA would not be able to provide electricity service sustainably to the community and will lead to a loss of credibility of the company. Further the noise and smoke disturbance to the community will remain high.

7.2 Alternative locations for powerhouse

Considering that the land area is already given to FENAKA and the proximity of the location to the harbor, the proposed powerhouse location is the most feasible. As fuel handling will be very easy and cost very less.

Two alternative locations (shown in figure below) were studied finding many disadvantages. Location one is the area behind the mosque on the South Eastern corner of the island. Here the distance to the nearest residential area is an estimated 25 feet. Second location is the South West corner of the island, as almost all land in this area is already given for housing plots hence this is not a feasible option either.



Figure 22: alternative locations for powerhouse. In green is the proposed powerhouse location and red is the alternative locations studied.

8.0 MONITORING

Monitoring is one of the most essential aspects of EIAs, as only through monitoring can the predicted impacts be confirmed. For negative impacts monitoring allows for the mitigation of these impacts which will allow the prevention or minimization of the negative impacts. For positive impacts monitoring will allow us to determine if the positive impacts are as perceived in the beginning of project allowing to determine the overall success for the project and measures for improvement. Further it will allow us to find any unforeseen impacts. Finally it will allow us to determine if the mitigation measures are working and hence allow us to proposed new mitigation measures.

The baseline data collection for the construction of new powerhouse was conducted on April 2016. Baseline surveys are conducted to determine the reference range, so that comparisons can be made during the monitoring to determine the change.

All monitoring activities must be done under supervision of a registered EIA consultant. The details of the monitoring program are given in the table below.

Table 14: environmental monitoring plan

Parameter	Phase	Method	Indicators	Frequency	Cost / MRF
Groundwater quality	Operation and Construction	Test of groundwater parameters	Hydrocarbons	Every 3 months during construction and every 6 months during operation	800
Noise level	Operation	Noise level measurement using decibel meter	Noise level	Before and after operation	3500

8.1 Monitoring schedule

Monitoring reports must be submitted to EPA as specified in the monitoring schedule below.

Table 15: monitoring schedule

Description	Date
EIA Decision statement issued	April 2016
Monitoring report during construction- 1	June 2016
Monitoring report during construction - 2	August 2016
Monitoring report during construction - 3	November 2016
Monitoring report after project completion- 4	December 2016
Monitoring report after project completion - 5	December 2017
Monitoring report after project completion - 6	December 2018
Monitoring report after project completion - 7	December 2019
Monitoring report after project completion - 8	December 2020

9.0 STAKEHOLDER CONSULTATIONS

9.1 Public Consultation

10 individuals from 10 different houses were consulted. Their names and concerns are summarized below.

Table 16: details of individuals consulted

Name	House	Contact
Abdul Razaq Aboobakuru	Gulshan	-
Moosa Labeen	Roose Meeru	7751121
Harun Yoosuf	Annaru Villa	7745721
Shareefa Gasim	Kurikeelage	9674859
Nasreena Hussain	Beenaa	9688327
Hawwa Yoosuf	Nishaam	7902902
Haulath Ibrahim	Aabath	9997524
Aishath Ahmed	Blue Light	7658617
Hafsa Gasim	Maza	9923419
Mariyam Zahira	Smart	7414705

All the individuals consulted felt very positive about the project and feels strongly that the new powerhouse is need. All individuals near the existing powerhouse said that they experience noise, odor and smoke disturbance. One individual stated that he is living in another house currently due to the disturbance. All the individuals said that sewerage service is the most in need.

9.2 Meeting with the island council

Following is the list of council members who participated in the meeting with the council and the summary of the discussion.

Table 17: attendees of council meeting

Name	Designation	Contact
Abdul Rasheed Abdul Gafoor	President	9918656
Rashid Mohamed	Vice President	7891031
Abdul Azeez Mohamed	Council Member	7992392
Murushida Mohamed	Council Member	9922842
Wafir Haroon	Director	9763400

Following is the main concerns, suggestion and things highlighted by the council;

- Regarding the clearance of land, the council highlighted that compensation had been given to the respective owners of the 3 coconut trees in the proposed powerhouse land.
- Council highlighted that there is a proposed business point to be developed near the harbor. Further, there are no environmentally sensitive sites and cultural sites within the island.
- There is no proper oil storage tank in existing powerhouse
- Smoke and noise disturbance from existing powerhouse to neighboring community is high
- The cable network of the island is 21 years old, so it is advisable to lay new cable network. As if this is not built to standard it will cause problems to community.
- Existing powerhouse is not in an acceptable standard
- Very positive about the project. Highlighted the new powerhouse must be constructed as soon as possible.

9.3 Consultations with working staff on site

Following is the list of staff who participated and assisted in the surveys with the EIA team.

Their concerns are highlighted below.

Table 18: names of staffs that were consulted.

Name	Designation
Ali Aboobakuru	Assistant Manager
Abdulla Abdul Razzaq	Officer
Hamdhoon Abdulla	Accounts Officer

Following is the main concerns, suggestion and things highlighted by the staff;

- Lack of computer system
- There is not enough staff recruited
- Panel room is in a separate area. So have to always go there from the admin building for inspections.
- There is not firefighting equipment
- Panel board is not up to standard
- The proposed powerhouse location is the best and is very positive about the project.

10.0 CONCLUSION

Works presented in this EIA does pose a risk to environment and people working. Therefore it is highly recommended that the mitigation measures proposed in this report is strictly followed during the construction and operational phase.

It is important to highlight that this project is very much needed for Hithaadhoo as the community is currently under a lot of noise and smoke disturbance from existing powerhouse. In addition, as the existing powerhouse is not in accordance with current standards.

With the development of new powerhouse the disturbance to community can be almost decreased to zero. Further, it is expected that the development of powerhouse will greatly increase the electricity security at Hithaadhoo. Furthermore the project will allow sustainable provision of electricity to the residents of Hithaadhoo by FENAKA. This will undoubtedly improve the public perception of the company.

11.0 REFEERENCES

1st amendment to environmental protection and preservation of the Maldives(4/93). (2014).

Retrieved from <http://www.mvlaw.gov.mv/pdf/ganoon/chapterIV/12-2014.pdf>

Kohler, K.E. & Gill, S.M., 2006. Coral Point Count with Excel extensions (CPCe): A Visual Basic program for the determination of coral and substrate coverage using random point count methodology. *Computers & Geosciences*, 32(9), pp.1259-1269. Available at:

<http://linkinghub.elsevier.com/retrieve/pii/S0098300405002633> [Accessed March 12, 2012].

Law on environmental protection and preservation of the Maldives. (1993). Retrieved from

<http://www.mvlaw.gov.mv/pdf/ganoon/chapterIV/4-93.pdf>

Law on general public services. (1996). Retrieved from

<http://www.mvlaw.gov.mv/pdf/ganoon/chapterII/4-96.pdf>

Maldives Energy Authority. (n.d.). Regulation on provision of electricity to Male' and Islands.

Retrieved from http://www.energy.gov.mv/v1/wp-content/files/lawsandregulations/D02-Downloads-MEA_Qawaaidhu01.pdf

Maldives Energy Authority. (n.d.). Guideline for powers system approval. Retrieved from

<http://www.energy.gov.mv/v1/wp-content/files/downloads/D03-Downloads-Guideline for Power System Approval-Rev200907091230.pdf>

Maldives Meteorological Centre. (2015). Climate of Maldives. Retrieved December 30, 2015,

from <http://www.meteorology.gov.mv/climateofmaldives>

Maldives Meteorological Service. (2015). *Daily Rainfall Data.*

President Office of Maldives. (2012, May 8). Environmental impact assessment regulation 2012.

Gazette of Maldives, 41(81). Retrieved from

<http://www.mvlaw.gov.mv/pdf/gavaid/minHousing/R27-2012.pdf>

President office of Maldives. (2013, April 9). 1st amendment to environment impact assessment regulation. *Gazette of Maldives*, 42(56). Retrieved from

<http://www.mvlaw.gov.mv/pdf/gavaid/minHousing/R18-2013.pdf>

President office of Maldives. (2013, August 5). Waste management regulation. *Gazette of Maldives*, 42(113).

President office of Maldives. (2015, August 30). 2nd amendment to environmental impact assessment regulation. *Gazette of Maldives*, 44(261). Retrieved from

http://epa.gov.mv/index.php?option=com_content&view=article&id=89:environmental-impact-assessment-regulation-2007&catid=10:environmental-regulations&Itemid=20

APPENDICES

Terms of Reference (ToR)



Terms of Reference for Environmental Impact Assessment for Relocating powerhouse at B.Hithaadho

The following is the Terms of Reference (ToR) following the scoping meeting held on 16th March 2016, for undertaking EIA for relocating powerhouse at B.Hithaadho. This ToR is based on the draft ToR submitted by the consultant on 3rd March 2016. The Proponent of this project is Fenaka Cooperation Limited. While every attempt has been made to ensure that this TOR addresses all of the major issues associated with development proposal, they are not necessarily exhaustive. They should not be interpreted as excluding from consideration matters deemed to be significant but not incorporated in them, or matters currently unforeseen, that emerge as important or significant from environmental studies, or otherwise, during the course of preparation of the EIA report

- 1. Introduction and rationale** – Describe the purpose of the project and, if applicable, the background information of the project/activity and the tasks already completed. Objectives of the development activities should be specific and if possible quantified. Define the arrangements required for the environmental assessment including how work carried out under this contract is linked to other activities that are carried out or that is being carried out within the project boundary. Identify the donors and the institutional arrangements relevant to this project.
- 2. Study area** – Submit a minimum A3 size scaled plan with indications of all the proposed infrastructures. Specify the agreed boundaries of the study area for the environmental impact assessment highlighting the proposed development location and size. The study area should include adjacent or remote areas, such as relevant developments and nearby environmentally sensitive sites (e.g. coral reef, sea grass, mangroves, marine protected areas, special birds site, sensitive species nursery and feeding grounds). Relevant developments in the areas must also be addressed including residential areas, all economic ventures and cultural sites.
- 3. Scope of work** – Identify and number tasks of the project including preparation, construction and decommissioning phases. The following tasks shall be completed:

Task 1. Description of the proposed project – Provide a full description and justification of the relevant parts of the project, using maps at appropriate scales where necessary. The following should be provided (all inputs and outputs related to the proposed activities shall be justified):

The main activities works are:

- Land clearance for infrastructure installation;
- Project management (include scheduling and duration of the project and life span of facilities; communication of construction details, progress, target dates, construction/operation/temporary labour accommodation, access to site, safety, equipment, waste management (including construction waste, fuel waste etc) and material storage, fuel management and emergency plan in case of spills).

Environmental Protection Agency
Green Building, 3rd Floor, Handhuvareefingun
Male, Rep. of Maldives, 20392

Tel: (+960) 333 5949 (+960) 333 5951
Fax: (+960) 333 5953

1 of 6

ދިވެހިސަރުކާރުގެ ގެޒެޓް
ދިވެހިރާއްޖޭގެ ޖުމްހޫރިއްޔާ
20392
Email: secretariat@epa.gov.mv
Website: www.epa.gov.mv



Power plant design

- Location and capacity of generators and facility;
- Access to power plant;
- Sound attenuation measures;
- Emergency power supply plan;
- Consideration of energy efficiency in power generation

Fuel Management

- Volume required for plant operation;
- Rate of waste lube oil generation its collection, storage and disposal;
- Fuel storage tank details (size, location,);
- Pipeline drawings and specifications especially leakage proofing;
- Measures of fuel containment
Method of fuel transport from harbour to storage

Hazard vulnerability

- Fire, electrical and explosion hazard
- Vulnerability of area to flooding and storm surge.

Health and safety

- Availability of basic first aid facilities
- Availability of safety gears
- Fire fighting capability of powerhouse operators or fire warden.

Task 2. Description of the existing environment – Assemble, evaluate and present the environmental baseline studies/data regarding the *study area and timing of the project* (e.g. monsoon season). Identify baseline data gaps and identify studies and the level of detail to be carried out by consultant. Consideration of likely monitoring requirements should be borne in mind during survey planning, so that data collected is suitable for use as a baseline. As such all baseline data must be presented in such a way that they would be usefully applied to future monitoring. The report should outline detailed methodology of data collection utilized.

The baseline data must be collected before construction and from at least two benchmarks. All survey locations shall be referenced with Geographic Positioning System (GPS) including water sampling points, reef transects, vegetation transects and manta tows sites for posterior data comparison. Information should be divided into the categories shown below:

All data must be collected as per the requirements of the EPA Data Collection Guidelines (published on www.epa.gov.mv). The report should outline detailed methodology of data collection utilized.

Environmental Protection Agency

Green Building, 3rd Floor, Handhuvaaree/Hingun

Male', Rep. of Maldives, 20392

Tel: [+960] 333 5949 [+960] 333 5951 ޖެނެރާލް ފޯން ނަންބަރު

Fax: [+960] 333 5953 ފެކްސް ނަންބަރު

2 of 6

ދިވެހިރާއްޖޭގެ ޖުމްހޫރިއްޔާގެ ގެޒެޓް ގަވާއިދު 10/2012

ދިވެހިރާއްޖޭގެ ޖުމްހޫރިއްޔާގެ ގެޒެޓް ގަވާއިދު 10/2012

ދިވެހިރާއްޖޭގެ ޖުމްހޫރިއްޔާގެ ގެޒެޓް ގަވާއިދު 10/2012

Email: secretariat@epa.gov.mv ފީލްޑް ޓްރެޝްޕްޓް ޓްރެޝްޕްޓް

Website: www.epa.gov.mv ވެބްސައިޓް ލިންކް



Hydrography/hydrodynamics (use maps)

- Tidal ranges and tidal currents;
- Wave climate and wave induced currents;
- Wind induced (seasonal) currents and along shore currents;

Ecology

- Terrestrial surveys: vegetation biodiversity and abundance (if vegetation is present);
- Ground water quality parameters including temperature, pH, salinity, Electrical Conductivity and Total Hydrocarbons. (From at least three locations including one control site for data comparison).
- Air quality measuring the following parameters: Particulate Matter, Oxides of nitrogen, Carbon monoxide and Sulphur dioxide; and
- Noise outside within 1m radius and within the nearest residential development.

Socio-economic environment

- Demography: total population, sex ratio, density, growth and pressure on land and marine resources;
- Income situation and distribution
- Land use planning, natural resource use and zoning of activities (approved);
- Community needs;

Task 3. Legislative and regulatory considerations – Identify the pertinent legislation, regulations and standards, and environmental policies that are relevant and applicable to the proposed project, and identify the appropriate authority jurisdictions that will specifically apply to the project.

Task 4. Potential impacts (environmental and socio-cultural) of proposed project, incl. all stages – The EIA report should identify all the impacts, direct and indirect, during and after construction, and evaluate the magnitude and significance of each. Particular attention shall be given to impacts associated with the following:

Impacts on the natural environment

- Impacts of noise, vibration and disturbance;
- Impacts on ground water table and quality due to construction operations and accidental fuel spillages;
- Impacts on unique or threatened habitats or species (coral reefs, sea turtles etc.), and
- Impacts on landscape integrity/scenery.

Impacts on the socio-economic environment

- Noise impacts to local residents;
- Changes in electricity prices, if any;
- Advantages of reliable electrical power supply;
- Population access to power (will access to power improve?)

Environmental Protection Agency
Green Building, 3rd Floor, Handhuvaareel-Hingun
Male', Rep. of Maldives, 20392
Tel: [+960] 333 5949 [+960] 333 5951
Fax: [+960] 333 5953

އެންވެއަލްޕްރޮޓެކްޝަން އެޖެންސީ
ގީރީން ބިލްޑިންގ، 3^{ވަނަ} ފެލޯ، ހަންދުވާރީލް ހިންގުނު
މާލެ، ރިޕްލިކްޕްލިކް ޖުމްހޫރިއްޔާ ދިވެހިރާއްޖެ، 20392
Email: secretariat@epa.gov.mv
Website: www.epa.gov.mv



ދިވެހިރާއްޖޭގެ ބައްލަވާލައްވާ ވަނަ ވަނަ ޖުމްހޫރިއްޔާ

"Dhivehin" – Always Maldivian, Forever Independent



- Employment and economic opportunities and diversification;
- Impacts on human health;
- Impacts from ground water contamination, if any;
- Impact equity (economic activities, employment, income);
- Social destabilization of the island community, and
- Monitoring of socioeconomic and demographic development.

Absence of facilities in the country to carry out the water quality tests will not exempt the proponent from the obligation to provide necessary data. The report should outline the detailed methodology of data collection utilized to describe the existing environment.

Task 3. Legislative and regulatory considerations – Identify the pertinent legislation, regulations and standards, and environmental policies that are relevant and applicable to the proposed project, and identify the appropriate authority jurisdictions that will specifically apply to the project. Legal requirements.

Task 4. Potential impacts (environmental and socio-cultural) of proposed project, incl. all stages – The EIA report should identify all the impacts, direct and indirect, during and after construction, and evaluate the magnitude and significance of each. Particular attention shall be given to impacts associated with the following:

Impacts on the natural environment

- Impacts of noise, vibration and disturbance;
- Impacts on ground water quality;
- Impacts on soil;
- Impacts on landscape integrity/scenery.

Impacts on the socio-economic environment

- Impacts on housing prices and availability;
- Impacts on employment, income and economy diversification;
- Impacts of increased demands on utility services especially water and energy and waste management;
- Impacts on transportation;
- Social destabilization of community;
- Traffic impacts;
- Impacts on nearby buildings;

Construction related hazards and risks

- Pollution of the natural environment (e.g. oil spills, discharge of untreated waste water and solid waste, including construction waste);
- Risk of accidents and pollution on workers and local population, and
- Impacts on social values, norms and belief due to construction workers on local population.

Environmental Protection Agency
Green Building, 3rd Floor, Handhuvaareel-Hingun
Male', Rep. of Maldives, 20392

Tel: [+960] 333 5949 [+960] 333 5951 : ޫޅުވަންނަން
Fax: [+960] 333 5953 : ފަންނަން

4 of 6

އެކްސްޕެރިޓްސް ޕްރޮޖެކްޓް ޕްރޮޖެކްޓް ޕްރޮޖެކްޓް
ޕްރޮޖެކްޓް ޕްރޮޖެކްޓް ޕްރޮޖެކްޓް ޕްރޮޖެކްޓް ޕްރޮޖެކްޓް
20392
Email: secretariat@epa.gov.mv : ފަންނަން
Website: www.epa.gov.mv : ޫޅުވަންނަން



- Potential damage to surrounding buildings during construction

The methods used to identify the significance of the impacts shall be outlined. One or more of the following methods must be utilized in determining impacts; checklists, matrices, overlays, networks, expert systems and professional judgment. Justification must be provided to the selected methodologies. The report should outline the uncertainties in impact prediction and also outline all positive and negative/short and long-term impacts. Identify impacts that are cumulative and unavoidable. Use interaction matrices (E.g. Leopold Matrix) to assess the magnitude and significance of the impacts.

Task 5. Alternatives to proposed project – Describe alternatives including the “no action option” should be presented. Determine the best practical environmental options. Alternatives examined for the proposed project that would achieve the same objective including the “no action alternative”. This should include alternative location, construction technologies, taking into account environmental, social and economic factors. The report should highlight how the location was determined. All alternatives must be compared according to international standards and commonly accepted standards as much as possible. The comparison should yield the preferred alternative for implementation. Mitigation options should be specified for each component of the proposed project.

Task 6. Mitigation and management of negative impacts – Identify possible measures to prevent or reduce significant negative impacts to acceptable levels. These will include both environmental and socio-economic mitigation measures with particular attention paid to sedimentation control and future changes in coastal processes. Measures for both construction and operation phase shall be identified. Cost the mitigation measures, equipment and resources required to implement those measures. The confirmation of commitment of the developer to implement the proposed mitigation measures shall also be included. An Environmental management plan for the proposed project, identifying responsible persons, their duties and commitments shall also be given. In cases where impacts are unavoidable arrangements to compensate for the environmental effect shall be given.

Task 7. Development of monitoring plan (see appendix)– Identify the critical issues requiring monitoring to ensure compliance to mitigation measures and present impact management and monitoring plan for ground water and sea water quality as well as marine ecosystem monitoring. Ecological monitoring will be submitted to the EPA to evaluate the damages during construction, after project completion and every three months thereafter, up to one year and then on a yearly basis for five years after. The baseline study described in task 2 of section 2 of this document is required for data comparison. Detail of the monitoring program including the physical and biological parameters for monitoring, cost commitment from responsible person to conduct monitoring in the form of a commitment letter, detailed reporting scheduling, costs and methods of undertaking the monitoring program must be provided.

* This TOR contains an outline of the parameters that have to be tested (see appendix). All projects are different, therefore additional or less data will be collected for recovery and impact assessments.

Environmental Protection Agency

Green Building, 3rd Floor, Handhuvaareefingun

Male', Rep. of Maldives, 20392

Tel: [+960] 333 5949 [+960] 333 5951 ފޯން: 333 5949 333 5951

Fax: [+960] 333 5953 ފެކްސް: 333 5953

އެކްސްކިއުޓިވް ޕްރޮޖެކްޓްސް ޕްރައިވަޓް ލިމިޓެޑް

މިނިސްޓްރީ އޮފް ޕްލާނިންގ، ޕްރޮޖެކްޓްސް ޕްރޮޖެކްޓްސް ޕްރައިވަޓް ލިމިޓެޑް

މާލެ، ދިވެހިރާއްޖެ، 20392

އިމެއިލް: secretariat@epa.gov.mv

ވެބްސައިޓް: www.epa.gov.mv

5 of 6



R. S. S.

Task 8. Stakeholder consultation, Inter-Agency coordination and public/NGO participation) – Identify appropriate mechanisms for providing information on the development proposal and its progress to all stakeholders, government authorities, government agencies, NGOs, engineers/designers, development managers, staff and members of the general public. The EIA report should include a list of people/groups consulted, their contact details and summary of the major outcomes. If any forms are used for public consultation, it shall be approved by the relevant government authorities and annexed.

Presentation- The environmental impact assessment report, to be presented in digital format, will be concise and focus on significant environmental issues. It will contain the findings, conclusions and recommended actions supported by summaries of the data collected and citations of any references used in interpreting those data. The environmental assessment report will be organized according to, but not necessarily limited by, the outline given in the Environmental Impact Assessment Regulations 2012.

Timeframe for submitting the EIA report – The developer must submit the completed EIA report within 6 months from the date of this Term of Reference.

[Handwritten Signature]

17th March 2016



ECA003

Environmental Protection Agency
Green Building, 3rd Floor, Handhuvaree Hingun
Male, Rep. of Maldives, 20392
Tel: [+960] 333 5949 [+960] 333 5951 : ޖެނެރަލް : ފޯން :
Fax: [+960] 333 5953 : ފޯން :

ދިވެހިސަރުކާރުގެ ގެޒެޓް
ދިވެހިރާއްޖޭގެ ޖުމްހޫރިއްޔާ
20392
Email: secretariat@epa.gov.mv : ފޯމް :
Website: www.epa.gov.mv : ވެބްސައިޓް :

6 of 6

Water sample results from MWSC

Page 1 of 1

Male' Water & Sewerage Company Pvt Ltd
Water Quality Assurance Laboratory
 FEN Building 5th Floor, Machhanqalhi, Ameenenagay, Male', Maldives
 Tel: +9603323209, Fax: +96033234306, Email: wqa@mwsc.com.mv

ދިވެހިސަރުކާރުގެ ގެޒެޓް



WATER QUALITY TEST REPORT
 Test Report No: 300777/2016/32



Customer Informations :

Fenaka Corporation Limited
 Port Complex Building,
 Hilaalee Magu,
 Male',
 Rep of Maldives

Date: 02/05/2016

Sample Description / Location	B. Hithaadho			TEST METHOD	UNIT
	Rosemid	Bodukaashige	Council		
Sample Type	Ground water				
Sampled Date	26/4/2016				
Sample Received Date	27/4/2016				
Test Requisition Form No.	900164153				
Sample No.	823559	823560	823561		
Date of Analysis	27/4/2016				
PARAMETER	ANALYSIS RESULT				
Physical Appearance	Clear with particles	Clear with particles	Clear with particles	Visual	
Conductivity	873	788	298	Method 2510 B. (Adapted from Standard methods for the examination of water and waste water, 22nd edition)	µS/cm
Nitrate	64.8	20.6	1.2	Method 8171 (Adapted from HACH DR5000 Spectrophotometer procedure Manual)	mg/L
pH	7.20	7.35	7.77	Method 4500-H+ B. (Adapted from Standard methods for the examination of water and waste water, 21st edition)	
Sulphide	<5 (LoQ 5µg/L)	<5 (LoQ 5µg/L)	<5 (LoQ 5µg/L)	Method 8131 (Adapted from HACH DR5000 Spectrophotometer procedure Manual)	µg/L
Salinity	0.44	0.39	0.14	Method 2520 B. (Adapted from Standard methods for the examination of water and waste water, 22nd edition)	mg/L
Phosphate	0.93	0.44	0.16	Method 8046 (Adapted from HACH DR5000 Spectrophotometer procedure Manual)	mg/L
Temperature	23.7	23.7	24.9	Electrometry	°C
Total Petroleum Hydrocarbon (TPH)	0.16	0.16	0.11	UV Fluorescence	mg/L

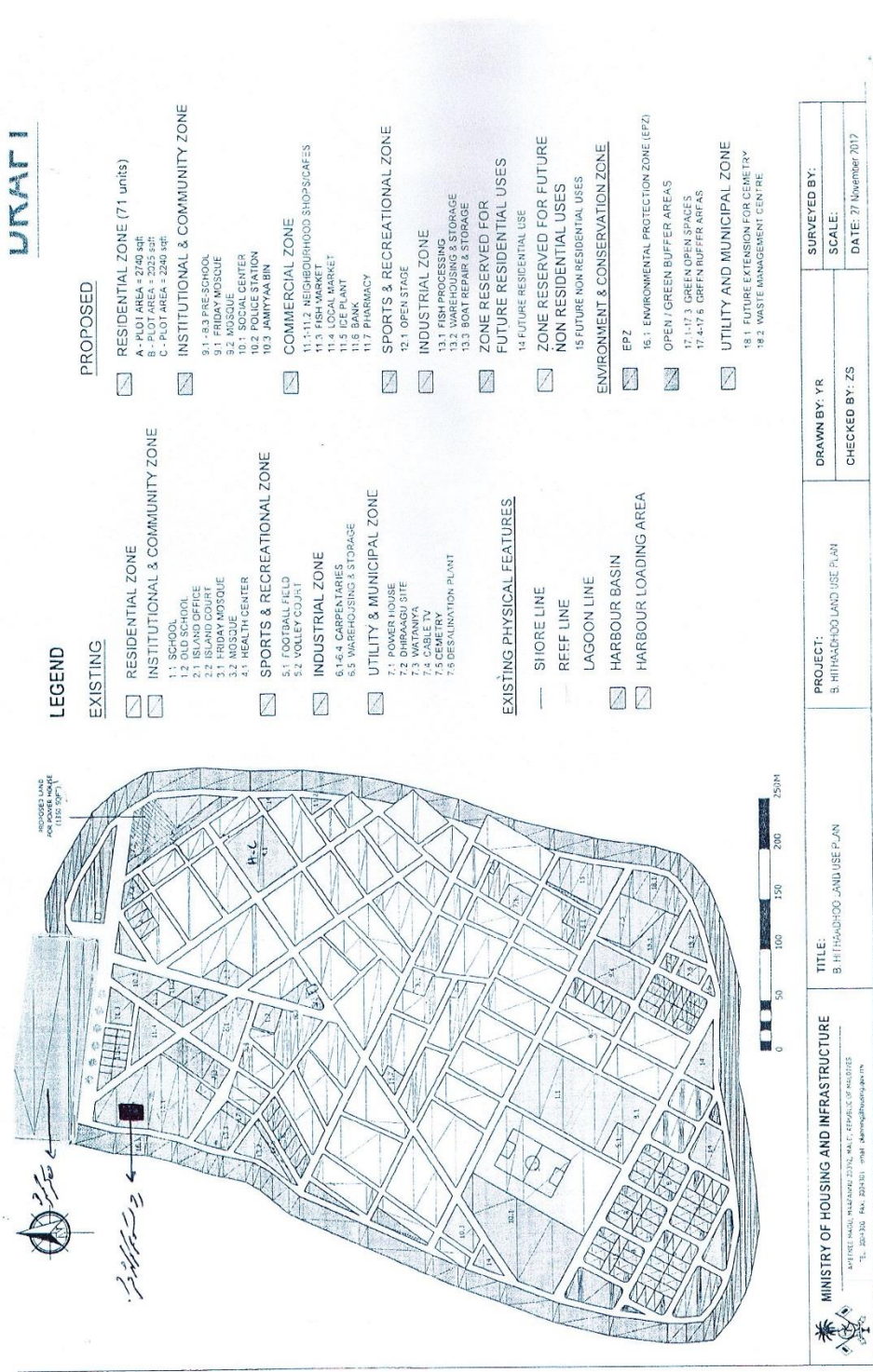
Keys: µg/L: Micrograms per litre, %: Parts Per Thousand, mg/L: Milligram Per Liter, °C: Degree Celsius
 LoQ: Limit of Quantification

Checked by:	Approved by:
 Afnan Farooq Laboratory Executive	 Mohamed Eyma Senior Technical Officer

Notes:
Sampling Authority: Sampling was not done by MWSC Laboratory
 This report shall not be reproduced except in full, without written approval of MWSC
 This test report is ONLY FOR THE SAMPLES TESTED.
 ~ Information Supplied by the customer

*****END OF THE REPORT*****

WQA/LAB/F-14, Rev 05



CURRICULUM VITAE OF MAHFOOZ ABDULL WAHHAB

PERSONAL DETAILS

Name: Mahfooz Abdull Wahhab
Nationality: Maldivian
Gender: Male
Date of Birth: 10th December 1992

Present address for communication: No Chance
K. Villingili
Malé
Republic of Maldives
Tel: (960) 9994467 (M)
Email: mahfoozabdullwahhab@gmail.com

EDUCATIONAL QUALIFICATION

SECONDARY EDUCATION:

High School Diploma

2008-2010 Centre for Higher Secondary Education, Male', Maldives

GCE O' level

2005-2007 Dharumavantha School, Malé, Republic of Maldives

TERTIARY EDUCATION:

Bachelor of Environmental Management

2012-2014 Maldives National University, Male', Maldives

OTHER QUALIFICATIONS

- PADI Advance Open water Diver
- Certificate II in Information Technology
- Registered EIA consultant

PROFESSIONAL EXPERIENCE

EIA for the coastal modification and protection measures of B. Voavah, January 2016. The project was to determine the environmental impacts arising from the coastal modification and protection works around B. Voavah. I was involved in the survey and the formulation of the EIA report to assess the environmental impacts arising from the project.

Survey of sewer system in H.Dh Nolvivaranfaru, December 2015. The survey was to determine the condition of the sewer system in Nolvivaranfaru. I was involved in the inspection of the manholes, pump stations and sea outfall.

EIA for the partial renovation and upgrade works of Six senses Laamu, L. Olhuveli, October 2015. The project was to determine the environmental impacts arising from the renovation works at Six senses Laamu jetties and Villas. I was involved in the survey and the formulation of the EIA report to assess the environmental impacts arising from the project.

EIA for the partial renovation and upgrade works of Four Seasons Kuda Huraa, August 2015. The project was to determine the environmental impacts arising from the renovation works at Kuda Huraa water villas and walkway jetties. I was involved in the survey and the formulation of the EIA report to assess the environmental impacts arising from the project.

EIA for the relocation of Trees from B.Kihaadhoo to B.Voavah, August 2015. The project was to relocate 50 trees from B.Kihaadhoo housing plots to B.Voavah which is going to be developed as a Luxury Tourist Resort. I was involved in the survey and the formulation of the EIA report to assess the environmental impacts arising from the project.

EIA for the development of B.Voavah as a Luxury Tourist resort, July 2015. The project was to determine the environmental Impact arising from the development of B.Voavah as a tourist. I was involved in the survey and the formulation of the EIA report to assess the environmental impacts arising from the project.

EIA for Coral Frame Project at Maalifushi, Thaa Atoll, May 2015. The project aims to rehabilitate the coral reef of Maalifushi by deploying coral frames around the reef. I was involved in the survey and the formulation of the EIA report to assess the environmental impacts arising from the project.

Coral Frame Project at Kanifushi, Kaafu Atoll. Monitoring of the coral frames in April 2015 under the project.

Coral Frame Project at Kuda Huraa, Kaafu Atoll. Monitoring of the coral frames in March 2015 under the project.

EIA for Coral Frame Project at Kanuhuraa, Lhaviyani Atoll, October 2014. The project aims to rehabilitate the coral reef of Kanuhuraa by deploying coral frames around the reef. I was involved in the survey and the formulation of the EIA report to assess the environmental impacts arising from the project.

Coral Frame Project at Kanuhuraa, Lhaviyani Atoll. I was involved in the launching of the project in August 2014. This involved transplantation of corals to the frames and its consecutive deployment in Kanuhuraa reef. In addition, the initial monitoring of the frames after transplantation.

Coral Frame Project at Landaa Giraavaru, Baa Atoll. Monitoring of the coral frames in August 2014 under the project.

CURRICULUM VITAE OF MOHAMED IBRAHIM JALEEL

Curriculum Vitae of MOHAMED IBRAHIM JALEEL

1.	NAME	:	Mohamed Ibrahim Jaleel												
2.	DATE OF BIRTH	:	9 May 1991												
3.	CITIZENSHIP	:	Maldivian												
4.	PERSONAL ADDRESS	:	V.Edhuruvehi Male'												
5.	TELEPHONE NO.	:	(960)9768999												
	E-MAIL ADDRESS	:	Mohamed.ibrahimjaleel@hotmail.com												
	EDUCATION	:	General Certification of Education, (GCE) Ordinary Level. In 2007 (Science stream)												
			General Certification of Education (Edexcel), in Advance Level. In 2010 (Science stream)												
			Certificate in Project Management from Clique colleague												
			Bachelor's Degree on Environmental Management from the Maldives National University.												
			Post Graduate Diploma in Research Studies												
6.	OTHER TRAINING	:	Graphics designing short course from IBI												
			Took part in lecture series held by IUCN Maldives on various conservation issues and opportunities in the Maldives												
			Training on preparation of EMMP under the MGCC project of USAID												
			Training workshop on IWRRM concepts under the GEF project, Kenya, Nivasha												
			Took part in the development of the Maldives National Strategic Action Plan as focal point from Water and Sewer sector												
7.	LANGUAGE & DEGREE OF PROFICIENCY	:	<table border="0" style="width: 100%;"> <tr> <td></td> <td style="text-align: center;"><u>Speaking</u></td> <td style="text-align: center;"><u>Writing</u></td> <td style="text-align: center;"><u>Reading</u></td> </tr> <tr> <td>English</td> <td style="text-align: center;">Excellent</td> <td style="text-align: center;">Excellent</td> <td style="text-align: center;">Excellent</td> </tr> <tr> <td>Dhivehi</td> <td style="text-align: center;">Mother tongue</td> <td style="text-align: center;">Mother tongue</td> <td style="text-align: center;">Mother tongue</td> </tr> </table>		<u>Speaking</u>	<u>Writing</u>	<u>Reading</u>	English	Excellent	Excellent	Excellent	Dhivehi	Mother tongue	Mother tongue	Mother tongue
	<u>Speaking</u>	<u>Writing</u>	<u>Reading</u>												
English	Excellent	Excellent	Excellent												
Dhivehi	Mother tongue	Mother tongue	Mother tongue												
8.	MEMBERSHIP IN CIVIC AND PROFESSIONAL SOCIETIES	:													
9.	Referees	:	<ul style="list-style-type: none"> • Hussain Hameez – Director, Fenaka Corporation. • Ahmed Zahid – Managing Director of Sandcays Pvt. Ltd. (7781535) • Aishath Ali – Registrar of the Maldives National University (7788167) • Shaheeda Adam Ibrahim – Director General of Water and Sanitation department, MEE. (3018381) 												

MOHAMED IBRAHIM JALEEL

10. EMPLOYMENT RECORD :

FROM: Jan 2016
 EMPLOYER
 POSITION HELD AND
 DESCRIPTION OF DUTIES

TO: Present
 Classy pool Pvt, Ltd
 Environmental Engineer.
 • Overseeing all the EIA related projects of the company

FROM: May 2015
 EMPLOYER
 POSITION HELD AND
 DESCRIPTION OF DUTIES

TO: Present
 Fenaka Corporation, Utilities Services Division
 Assistant Director.
 • Overseeing all the water and sanitation related projects under the company
 • Overseeing all the water and sewer systems operated under the company.

FROM: Jan 2015
 EMPLOYER
 POSITION HELD AND
 DESCRIPTION OF DUTIES

TO: May 2015
 Ministry of Environment and Energy, Water and Sanitation Department
 Assistant Director.
 • Overseeing all the donor related water and sewerage projects.
 • Manage and supervise the implementation of project work on a daily basis.
 • Administrative and Policy related works of the sector.

FROM: Feb 2014
 EMPLOYER
 POSITION HELD AND
 DESCRIPTION OF DUTIES

TO: January 2015
 Sandcays Pvt. Ltd.
 Research assistant. Assisting in environmental research, environmental surveys and monitoring, drafting of EIA/ESIA reports and other documentation.

FROM: 2011
 EMPLOYER
 POSITION HELD AND
 DESCRIPTION OF DUTIES

TO: 2011
 Ministry of Health and Gender
 Child care supervisor (full time). Monitoring and reporting the actions of the child care officers and the needs of the children in Kudakudhinge hiyaa. Carrying out and planning various activities that are necessary for the growth and development of the children. Formulating the annual and the monthly schedule for the children and the child care workers. Attending to emergencies and accidents that occur within the kudakudhinge hiya sector.

FROM: 2011
 EMPLOYER
 POSITION HELD AND
 DESCRIPTION OF DUTIES

TO: 2012
 Maldives National University
 Admission and Registration officer. Carrying out the respective works of the admission and registration section of the Maldives National University.

MOHAMED IBRAHIM JALEEL

12. RELEVANT WORK EXPERIENCE

Project Name : Study and EIA for proposed Reclamation and Resort Development on K. Tholhimarahura
 Client : J Lagoons pvt. Ltd.
 Period : Sep 2014 Time Spent: 4 week
 Position Held : Research assistant
 Duties : Assisted in drafting/compiling of report

Project Name : Study and EIA for proposed STP for Alimatha Aquatic Resort, Vaavu Atoll
 Client : Alimatha Aquatic Resort
 Period : Aug 2014 Time Spent: 3 week
 Position Held : Research assistant
 Duties : Assisted in drafting/compiling of report

Project Name : Survey and EIA for proposed STP for Mayaafushi Island Resort, Alif Alif Atoll
 Client : Mayaafushi Island Resort
 Period : Aug 2014 Time Spent: 3 week
 Position Held : Research assistant
 Duties : Assisted in drafting/compiling of report

Project Name : Study and EIA for proposed STP for Diggiri Tourist Resort, Vaavu Atoll
 Client : Dhiggiri Tourist Resort
 Period : Aug 2014 Time Spent: 3 week
 Position Held : Research assistant
 Duties : Assisted in surveying activities and drafting/compiling of report.

Project Name : Survey of Ensis RO plant Registration, Hulhumale'
 Client : Ensis Pvt. Ltd.
 Period : Aug 2014 Time Spent: 2 days
 Position Held : Research assistant
 Duties : Assisted in surveying activities

Project Name : Study and EIA for proposed Resort development project in Kanbaalifaru, Shaviyani Atoll
 Client : Kanbaalifaru Investments Pvt. Ltd.
 Period : June 2014 Time Spent: 4 weeks
 Position Held : Research assistant
 Duties : Assist in the drafting/compiling of the EIA report based on previous work

Project Name : Study and EIA for the proposed Water Supply system in HA. Thuraakunu
 Client : Upper North Province Council
 Period : June 2014 Time Spent: 3 weeks
 Position Held : Research assistant
 Duties : Assist in the drafting/compiling of the EIA report based on previous work

Project Name : Study and EIA for the Aa.Thoddoo water supply project
 Client : MWSC
 Period : May 2014 Time Spent: 1 week
 Position Held : Research assistant
 Duties : Responsible for the survey equipment, assisted in all surveying activities

Project Name : As built Survey of B. Kihaadhufaru Resort
 Client : lbsun pvt.ltd
 Period : May 2014 Time Spent: 1 week
 Position Held : Research assistant
 Duties : Responsible for the survey equipment, assisted in all surveying activities

Project Name : Survey of H.Marvel EIA
 Client : Adam Saleem
 Period : May 2014 Time Spent: 1 day
 Position Held : Research assistant
 Duties : Assisted in survey of the EIA report based on previous work

Project Name : Study and EIA for proposed Coastal protection of Paradise Island Resort, North Male' Atoll
 Client : Diza Travels and Trade Pvt.Ltd
 Period : April 2014 Time Spent: 4 weeks
 Position Held : Research assistant
 Duties : Assist in the drafting/compiling of the EIA report based on previous work

Project Name : Study and EIA for proposed Resort development project in Maareha, Gaaf Alif Atoll
 Client : Moving International Pvt.Ltd
 Period : April 2014 Time Spent: 4 weeks

March 2016

Page (3)

MOHAMED IBRAHIM JALEEL

Position Held	: Research assistant	
Duties	: Assist in the drafting/compiling of the EIA report based on previous work	
Project Name	: ESIA for five schools under Enhancing Education Development Project	
Client	: Ministry of Education	
Period	: February 2014	Time Spent: 4 weeks
Position Held	: Research assistant	
Duties	: Assist in compiling socio-economic profiles of islands and review of ESIA report	
Project Name	: EIA for proposed harbour rehabilitation in Holudhoo, Noonu Atoll	
Client	: Maldives Transport and Contacting Company (MTCC)	
Period	: March 2014	Time Spent: 4 weeks
Position Held	: Research assistant	
Duties	: Assist in the drafting/compiling of the EIA report based on previous work	
Project Name	: EIA for proposed harbour Construction in Dhangethi, Alif Dhaal Atoll	
Client	: Maldives Transport and Contacting Company (MTCC)	
Period	: March 2014	Time Spent: 2 weeks
Position Held	: Research assistant	
Duties	: Assist in drafting/compiling the EIA report	
Project Name	: EIA for proposed Airport Development at Dh.Kudahuvadho	
Client	: Reollo Investments	
Period	: March 2014	Time Spent: 4 weeks
Position Held	: Research assistant	
Duties	: Assist in drafting/compiling the EIA report. Carried out monitoring surveys in the implementation phase.	

MOHAMED IBRAHIM JALEEL

Project Name	: Survey for L. Maamendhoo Sewerage project
Client	: Fenaka
Period	: Time Spent: 1 weeks
Position Held	: Research assistant
Duties	: Carried out the survey for the initial concept design of the project, which included taking the block level survey of as built and the levels (elevation) survey for the island.
Project Name	: OFID (Phase 1) Provision of Water Supply Facilities 04(Four) Island and Sewerage Facilities in 05 (Five) Island, Maldives
Client	: OFID
Period	: Time Spent: 2 weeks
Position Held	: Research assistant
Duties	: Team leader responsible for overseeing all the project activities and issues
Project Name	: EMP for the proposed project to update the STP in Dhiggiri Resort
Client	: Aqua Solutions
Period	: Time Spent: 2 weeks
Position Held	: Research assistant
Duties	: Assist in drafting/compiling the EIA report. Carried out monitoring surveys in the implementation phase.
Project Name	: Survey and EMP for the proposed project to update the STP in Mayaafushi Resort
Client	: Aqua Solutions
Period	: Time Spent: 2 weeks
Position Held	: Research assistant
Duties	: Assist in drafting/compiling the EIA report. Carried out monitoring surveys in the implementation phase.
Project Name	: Survey and EIA for the proposed Phase (2) of Niyaama Resort
Client	: Niyaama Resort
Period	: Time Spent: 4 weeks
Position Held	: Research assistant
Duties	: Was involved in the survey activities and carried out all the respective works of drafting/compiling the EIA report.
Project Name	: OFID Loan phase 2 – Water Supply and Sewerage Project (04 Island Sewerage, 10 Island Water Supply Facilities and 29 Island RO Installation and Storage Enhancement)
Client	: OFID
Period	: Time Spent: To April 2015
Position Held	: Assistant Director
Duties	: Managing the project as team leader, preparation and review of bids and proposals, evaluation reports and drafting of contract documents.
Project Name	: IDB – Sanitation in Five Island Project
Client	: IDB
Period	: Time Spent: To May 2015
Position Held	: Assistant Director
Duties	: Managing the project as team leader, preparation and review of bids and proposals, evaluation reports and drafting of contract documents.
Project Name	: Water supply project (UNOPS) in Lh. Hinnavaru with the inclusion of awareness component (CHEMONICS)
Client	: USAID
Period	: Time Spent: To May 2015
Position Held	: Assistant Director
Duties	: Team leader responsible for overseeing all the project activities and issues
Project Name	: KUWAIT FUND water supply project in Gn.Fuvahmulah
Client	: KUWAIT FUND
Period	: Time Spent: To May 2015
Position Held	: Assistant Director
Duties	: Managing the project as team leader, preparation and review of bids and proposals, evaluation reports and drafting of contract documents.
Project Name	: National water awareness campaign
Client	: MEE
Period	: Time Spent: To May 2015
Position Held	: Assistant Director
Duties	: Team leader responsible for overseeing all the programme activities and resolve any setbacks.

MOHAMED IBRAHIM JALEEL

Project Name	: Establishment of water supply services in all the islands of Addu city
Client	: MEE
Period	: Time Spent: To present
Position Held	: Assistant Director
Duties	: Responsible for overseeing all the project activities and issues
Project Name	: Design and Built of Sewer Systems in the islands of Th.Buruni, Th.Madifushi
Client	: MEE
Period	: Time Spent: To present
Position Held	: Assistant Director
Duties	: Responsible for overseeing all the project activities and issues
Project Name	: Design and Built of Sewer Systems in the islands of L.Maamendhoo
Client	: MEE
Period	: Time Spent: To present
Position Held	: Assistant Director
Duties	: Responsible for overseeing all the project activities and issues
Project Name	: Provision of Sewer service to – housing units in L.Fonadhoo
Client	: MEE
Period	: Time Spent: To present
Position Held	: Assistant Director
Duties	: Responsible for overseeing all the project activities and issues
Project Name	: Provision of Sewer service in Addu city, Hithadhoo, central area
Client	: MEE
Period	: Time Spent: To present
Position Held	: Assistant Director
Duties	: Responsible for overseeing all the project activities and issues

13. CERTIFICATION:

I, THE UNDERSIGNED, confirm that to the best of my knowledge, this CV correctly describes me, my qualifications and my experience

Mohamed Ibrahim Jaleel