



150 1941  
 20  
 1941

1960  
 1:55

**100**

1957  
 4  
 1960

1960  
 1:55

1960  
 1:55

**100**

1957  
 4  
 1960



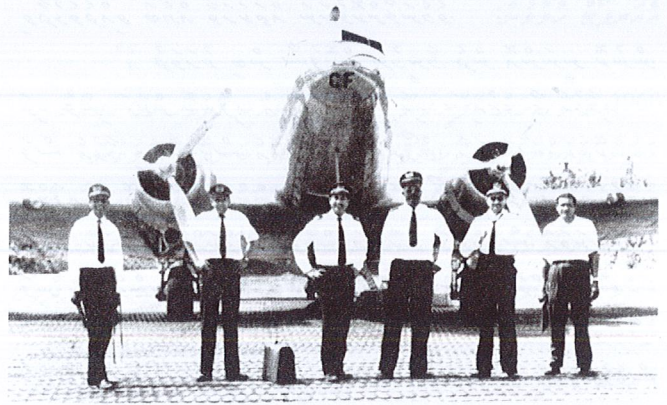
1960  
 1:55

**100**

1957  
 4  
 1960



1. 1964 1 1  
 2/ 1000/-  
 300/-  
 26  
 3  
 www.airports.(com.mv)



1964 1 1  
 1000/-  
 300/-  
 26  
 3  
 www.airports.(com.mv)

**1964 1 1**

**1964 1 1**

1964 1 1  
 150  
 200  
 400  
 2007 (56)

1964 1 1  
 150  
 200  
 400  
 2007 (56)

1965 10  
 17  
 1965  
 30  
 17

1965 10  
 17  
 1965  
 30  
 17

1800X100  
 26  
 27  
 1964  
 30  
 27

1800X100  
 26  
 27  
 1964  
 30  
 27



